

# Grip-handle and Nesting Slab Weights

118 • PRECISION Solutions

## Avoirdupois



### NIST CLASS F

Weight	Part #	Dimensions	Slot Width	Slot Depth*	List Price	Traceable Certificate
3000 lb	12872	20 3/4" W x 20 3/4" L x 29" H	3 1/2"	2 3/4"	\$8,100.00	\$300.00
2500 lb	12854	20 3/4" W x 20 1/4" L x 24 1/4" H	3 1/2"	2 3/4"	\$7,500.00	\$225.00
2000 lb	12868	20 3/4" W x 20 3/4" L x 19 1/2" H	3 1/2"	2 3/4"	\$6,400.00	\$225.00
1500 lb	12864	15 1/8" W x 15 1/8" L x 23 7/8" H	2 1/2"	2 1/2"	\$5,765.00	\$225.00
1250 lb	12858	15" W x 15 1/8" L x 23 7/8" H	2 1/2"	2 1/2"	\$4,800.00	\$225.00
1000 lb	12850	15" W x 15 1/2" L x 19" H	2 1/2"	2 1/2"	\$2,375.00	\$225.00
500 lb	12844	11 1/2" W x 11 3/4" L x 16" H	2 1/2"	1 3/4"	\$1,445.00	\$225.00
250 lb	12892	9 3/4" W x 9 3/4" L x 12" H	2 1/2"	2"	\$1,320.00	\$225.00
200 lb	12890	9 3/4" W x 9 3/4" L x 10" H	2 1/2"	2"	\$1,150.00	\$225.00
100 lb	12862	9 1/4" W x 7" L x 7 3/4" H	4 1/2"	1 5/8"	\$510.00	\$100.00
50 lb	12839	7 7/8" W x 5 1/2" L x 6 9/16" H	4 1/2"	1 5/8"	\$120.00	\$75.00
30 lb	12878	8 1/4" W x 4 15/16" L x 4 1/2" H	Consult Factory	Consult Factory	\$115.00	\$75.00
25 lb	12833	6 1/2" W x 4 1/2" L x 4 15/16" H	3 5/8"	1"	\$105.00	\$75.00
20 lb	12870	5 7/8" W x 4 1/2" L x 5" H	3 5/8"	1 1/8"	\$85.00	\$75.00

### ASTM CLASS 7

Weight	Part #	Dimensions	List Price	Traceable Certificate
10 lb	12828	5" W x 3 1/4" L x 3 31/32" H	\$70.00	\$75.00
5 lb	12823	4" W x 2 9/16" L x 3. 13/64" H	\$50.00	\$75.00
2 lb	12874	3" W x 2 1/8" L x 1.3/4" H	\$48.00	\$60.00
1 lb	12876	2 1/2" W x 1 11/16" L x 1 3/8" H	\$44.00	\$60.00

### Additional Accessories

PART #	DESCRIPTION	LIST PRICE
36092	Certificate of Accuracy	\$45.00

Central Carolina Scale, Inc  
 To order, call (919) 776-7737  
 Email: sales@centralcarolinascale.com  
 We accept MC, Visa, Discover, AMEX

## Metric



### NIST CLASS F

Weight	Part #	Dimensions	Slot Width	Slot Depth*	List Price	Traceable Certificate
1000 kg	12801	20 1/2" W x 20 1/2" L x 22" H	3 1/2"	2 3/4"	\$6,400.00	\$300.00
500 kg	12797	15 1/8" W x 15 1/8" L x 20 3/4" H	2 1/2"	2"	\$2,800.00	\$225.00
250 kg	12782	11 3/4" W x 12 1/2" L x 17 1/2" H	2 1/2"	2"	\$1,550.00	\$225.00
200 kg	12793	11 1/2" W x 12" L x 14 1/4" H	2 1/2"	1 7/8"	\$1,330.00	\$225.00
100 kg	12817	9 7/8" W x 9 7/8" L x 11" H	2 1/2"	2"	\$1,200.00	\$225.00
50 kg	12803	9 1/4" W x 7" L x 8 3/8" H	4 1/2"	1 5/8"	\$525.00	\$125.00
35 kg	12805	7 7/8" W x 5 9/16" L x 9 1/8" H	4 1/4"	3 5/8"	\$350.00	\$125.00
25 kg	12775	7 7/8" W x 5 9/16" L x 9 1/8" H	4 1/2"	1 3/4"	\$145.00	\$70.00
20 kg	12771	7 3/4" W x 5 5/8" L x 5 7/8" H	4 1/2"	1 1/2"	\$110.00	\$70.00
10 kg	12767	6 1/8" W x 4 9/16" L x 5" H	3 5/8"	1"	\$85.00	\$70.00

### ASTM CLASS 7

Weight	Part #	Dimensions	Slot Width	Slot Depth*	List Price	Traceable Certificate
5 kg	12786	5 7/16" W x 3 1/4" L x 3 15/16 H	-	-	\$70.00	\$70.00
2 kg	12809	4 1/16" W x 2 5/8" L x 2 11/16" H	-	-	\$50.00	\$70.00
1 kg	12813	3 1/16" W x 2 1/8" L x 1 3/4" H	-	-	\$48.00	\$70.00
500 g	12815	2 9/16" W x 1 5/8" L x 1 7/16" H	-	-	\$44.00	\$70.00

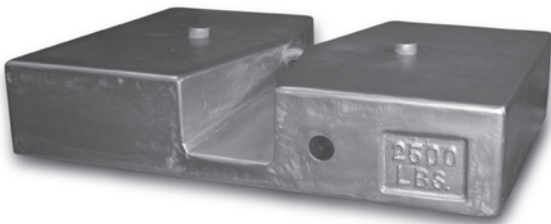
### OIML CLASS M1

Weight	Part #	Dimensions	Slot Width	Slot Depth*	List Price	Traceable Certificate
50 kg	105417	9 1/4" W x 7" L x 8 3/8 H	4 1/2"	1 5/8"	\$575.00	\$125.00
20 kg	105416	7 3/4" W x 5 5/8" L x 5 7/8" H	4 1/2"	1 1/2"	\$150.00	\$70.00
10 kg	105415	6 1/8" W x 4 9/16" L x 5" H	3 5/8"	1"	\$100.00	\$70.00
5 kg	105414	5 7/16" W x 3 1/4" L x 3 15/16" H	-	-	\$85.00	\$70.00

### NIST CLASS F

Weight	Part #	Dimensions	Slot Width	Slot Depth*	List Price	Traceable Certificate
2500 lb	12860	42" W x 30" L x 8 1/4" H	2"	2 1/4"	\$7,500.00	\$225.00
1000 lb	34563	29 1/2" W x 19 1/2" L x 7 1/4" H	2"	2 1/4"	\$3,750.00	\$225.00

## Avoirdupois Nesting Slab



### Additional Accessories

PART #	DESCRIPTION	LIST PRICE
36092	Certificate of Accuracy	\$45.00

Central Carolina Scale, Inc  
 To order, call (919) 776-7737  
 Email: sales@centralcarolinascale.com  
 We accept MC, Visa, Discover, AMEX