

CG-16

▶ **DOUBLE-ENDED
SHEAR BEAM**

▶ **ALLOY STEEL**

CENTRAL CAROLINA SCALE, INC 5393 FARRELL ROAD SANFORD NC 27330 (919) 776-7737



CG-16 ORDER INFORMATION PRICING^g SUGGESTED LIST PRICE

1K, 1.5K, 2K, 2.5K, 3K, 5K	\$ 485.00
10K, 15K, 20K, 25K, 35K	\$ 575.00
50K	\$ 825.00
* 75K	\$ 825.00
*100K & 125K	\$1095.00
* Has square center	

INTERCHANGEABLE PRODUCTS

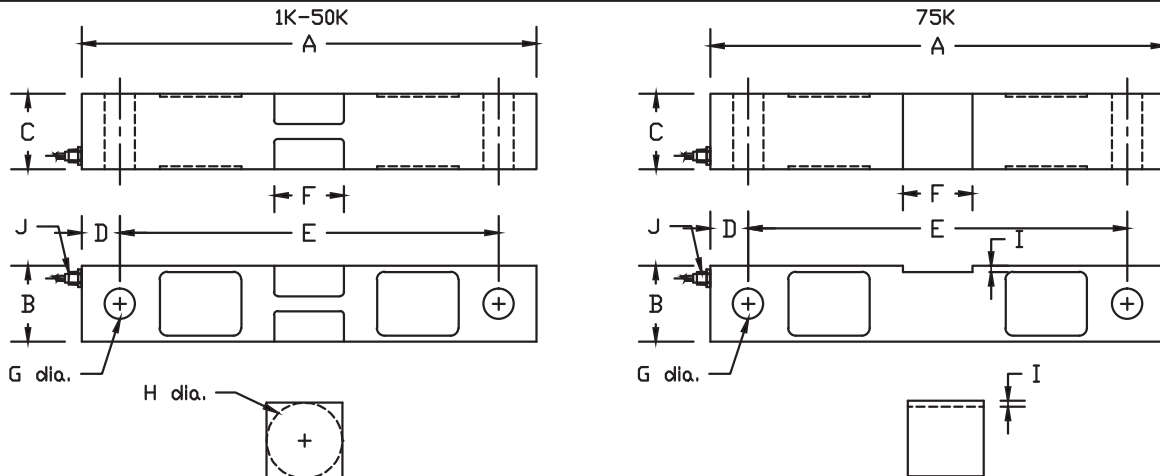
Rice Lake Weighing Systems.....	RL75016
Sensortronics.....	65016
Revere.....	5203
Celtron.....	DSR
Artech.....	70510
Totalcomp	GDE16
Totalcomp	TDE16
Transcell.....	DBS

WEIGH MODULES

Coti Global Sensors

CG16M

Main Dimensions and Accessories



RATED CAPACITY	DIMENSIONS										
	A	B	C	D	E	F	G	H	I	J	
1K-5K	7.50	1.25	1.25	0.62	6.25	1.15	0.50	1.25	-	1/4-18 NPT	
10K-25K	8.75	1.94	1.44	0.62	7.50	2.00	0.81	2.00	-	1/4-18 NPT	
35K	8.75	2.50	1.50	0.62	7.50	2.00	0.81	2.50	-	1/4-18 NPT	
50K	13.50	2.94	2.44	1.00	11.50	3.25	1.31	3.00	-	1/2-14 NPT	
75K	13.50	2.94	2.44	1.00	11.50	3.25	1.31	-	0.17	1/2-14 NPT	
100K-125K	18.50	3.94	2.94	1.75	15.00	3.25	1.63	-	0.25	1/2-14 NPT	

▶ **SPECIFICATIONS** ◀

Rated Output (mV/V)	3.00	Input Impedance	700 +/- 10 ohms
Nonlinearity	+/- 0.03% FS	Output Impedance	700 +/- 5 ohms
Hysteresis	+/- 0.02% FS	Insulation Resistance	5000 Megohms
Repeatability	+/- 0.01% FS	Excitation Voltage	10V AC/DC (20V Max)
Creep (30 minutes)	+/- 0.02% FS	Compensated Temperature Range	-10°C - +40°C
Zero Balance	+/- 1.00% FS	Operating Temperature Range	-20°C - +60°C
Temperature Effect on Zero	+/- 0.0027% of rated output/°C	Safe Overload	150% FS
Temperature Effect on Output	+/- 0.0015% of applied load/°C	Cable Length: 1K - 5K 50' Standard	10K - 125K 50' Braided Shield
Cable Color Code	Input Output	Seal Type	Environmentally-Sealed, IP67
	Green +Excitation White +Signal		
	Black -Excitation Red -Signal		