

CG-23-LP

▶ **THREADED HOLE, SINGLE-ENDED SHEAR BEAM**

▶ **STAINLESS STEEL**

Environmentally Sealed, IP67
NTEP 1:5000 Class III Multiple Cell

CENTRAL CAROLINA SCALE, INC 5393 FARRELL ROAD SANFORD NC 27330 (919) 776-7737



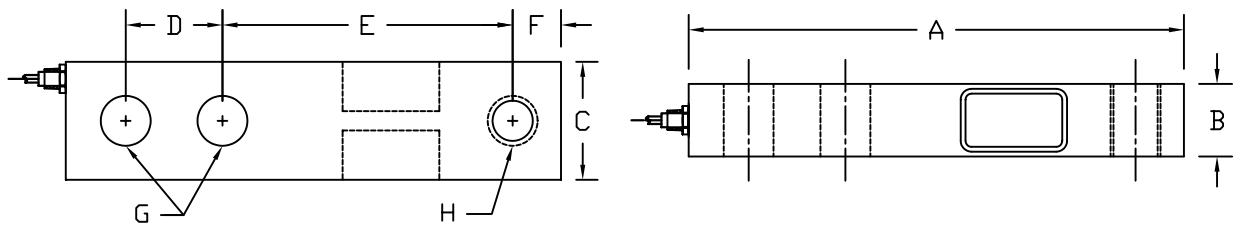
CG-23-LP ORDER INFORMATION PRICING^g SUGGESTED LIST PRICE

1K	\$ 210.00
2.5K	\$ 210.00

INTERCHANGEABLE PRODUCTS

Artech.....	SS30315
Artech.....	30315
Sensortronics.....	65023A-5507

Main Dimensions and Accessories



RATED CAPACITY	DIMENSIONS										
	A	B	C	D	E	F	G	H			
1K-2.5K	5.12	0.75	1.22	1.00	3.00	0.50	0.51	1/2	-20UNF		

→ **SPECIFICATIONS** ←

Rated Output (mV/V)	3.00	Input Impedance	385 +/- 10 ohms
Nonlinearity	+/- 0.03% FS	Output Impedance	350 +/- 3 ohms
Hysteresis	+/- 0.02% FS	Insulation Resistance	5000 Megohms
Repeatability	+/- 0.01% FS	Excitation Voltage	10V AC/DC (20V Max)
Creep (30 minutes)	+/- 0.02% FS	Compensated Temperature Range	-10°C - +40°C
Zero Balance	+/- 1.00% FS	Operating Temperature Range	-20°C - +60°C
Temperature Effect on Zero	+/- 0.0027% of rated output/°C	Safe Overload	150% FS
Temperature Effect on Output	+/- 0.0015% of applied load/°C	Cable Length	20' Standard Cable
Cable Color Code	Input Output	Seal Type	Environmentally-Sealed, IP67
	Green +Excitation White +Signal		
	Black -Excitation Red -Signal		