

CG-23-SS

▶ **THREADED HOLE OR THROUGH HOLE SINGLE-ENDED SHEAR BEAM**

▶ **STAINLESS STEEL**
NTEP 1:5000 Class III Multiple Cell, IP67

CENTRAL CAROLINA SCALE, INC 5393 FARRELL ROAD SANFORD NC 27330 (919) 776-7737



CG-23-SS ORDER INFORMATION | PRICINGⁱⁱⁱ | SUGGESTED LIST PRICE

CG-23-SS 250lb, 500lb, 750lb, 1K, 1.5K, 2K, 2.5K, 4K, 5Kse... Threaded Hole	\$ 265.00
CG-23-SS 5Kle, 10K... Threaded Hole	\$ 330.00
CG-23-SS 15K, 20K... Threaded Hole	\$ 645.00

SE refers to small envelope • LE refers to large envelope

CG-23-SS-1 ORDER INFORMATION | DISCOUNT C | SUGGESTED LIST PRICE

CG-23-SS-1 250lb, 500lb, 750lb, 1K, 1.5K, 2K, 2.5K, 4K, 5Kse... Through Hole	\$ 265.00
CG-23-SS-1 5Kle, 10K... Through Hole	\$ 330.00
CG-23-SS-1 15K, 20K... Through Hole	\$ 645.00

SE refers to small envelope • LE refers to large envelope

INTERCHANGEABLE PRODUCTS: CG-23-SS

Rice Lake Weighing Systems.....	RL35023S, RL39123
Sensortronics.....	65023S
Celtron.....	SQB SS
Revere.....	9123
Artech.....	SS30310
HBM.....	B35

INTERCHANGEABLE PRODUCTS: CG-23-SS-1

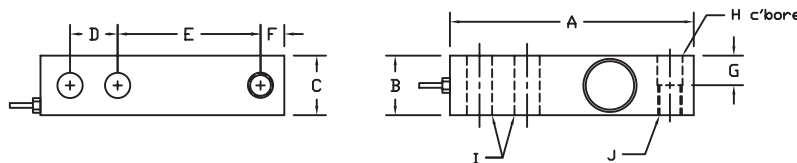
Artech.....	SS30210
-------------	---------

WEIGH MODULE AVAILABLE

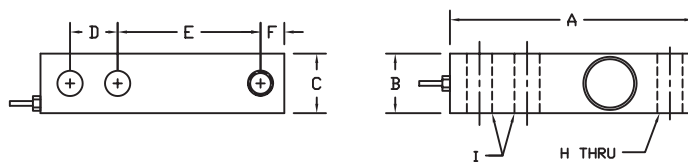
Coti Global Sensors CG23M, CG59M, CG82M

Main Dimensions and Accessories

CG-23-SS THREADED LOAD HOLE



CG-23-SS-1 NON-THREADED LOAD HOLE (THROUGH HOLE)



RATED CAPACITY	DIMENSIONS										
	A	B	C	D	E	F	G	H	I	J	
250lb-750lb	5.12	1.25	1.25	1.00	3.00	0.50	0.62	0.53	0.53	1/2	-20UNF
1K-5KSE	5.12	1.25	1.25	1.00	3.00	0.50	0.62	0.53	0.53	1/2	-20UNF
5KLE-10K	6.75	1.50	1.50	1.50	3.75	0.75	0.75	0.78	0.78	3/4	-16UNF
15K-20K	8.88	2.00	2.00	2.00	4.88	1.00	1.00	1.03	1.03	1-14UNF	

▶ **SPECIFICATIONS** ◀

Rated Output (mV/V)	3.00	Input Impedance	385 +/- 10 ohms
Nonlinearity	+/- 0.03% FS	Output Impedance	350 +/- 3 ohms
Hysteresis	+/- 0.02% FS	Insulation Resistance	5000 Megohms
Repeatability	+/- 0.01% FS	Excitation Voltage	10V AC/DC (20V Max)
Creep (30 minutes)	+/- 0.02% FS	Compensated Temperature Range	-10°C - +40°C
Zero Balance	+/- 1.00% FS	Operating Temperature Range	-20°C - +60°C
Temperature Effect on Zero	+/- 0.0027% of rated output/°C	Safe Overload	150% FS
Temperature Effect on Output	+/- 0.0015% of applied load/°C	Cable Length	20' Standard Cable
Cable Color Code	Input Green +Excitation Black -Excitation	Output White +Signal Red -Signal	Seal Type Environmentally-Sealed, IP67