

# CG-23-SSW-02

**THREADED HOLE  
SINGLE-ENDED SHEAR BEAM**

**STAINLESS STEEL**  
NTEP 1:5000 Class III Multiple Cell

**CENTRAL CAROLINA SCALE, INC 5393 FARRELL ROAD SANFORD NC 27330 (919) 776-7737**



**CG-23-SSW-XX ORDER INFORMATION PRICING SUGGESTED LIST PRICE**

<b>CG-23-SSW-02-C20</b> 2mv/v Threaded Hole 20' common cable	
1K, 1.5K, 2K, 2.5K, 4K, 5Kse	\$ 300.00
5K, 10K	\$ 375.00
<b>CG-23-SSW-02-T20</b> 2mv/v Threaded Hole 20' Teflon cable	
1K, 1.5K, 2K, 2.5K, 4K, 5Kse	\$ 375.00
5K, 10K	\$ 425.00

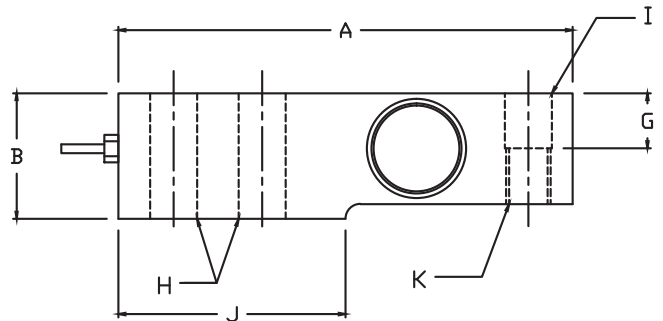
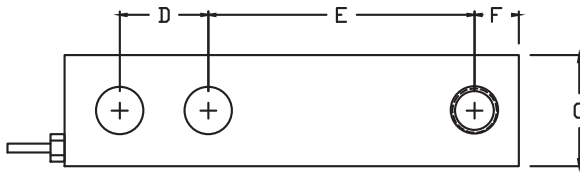
**INTERCHANGEABLE PRODUCTS**

Rice Lake Weighing Systems.....	RL35082
Sensortronics.....	65083S
Toledo.....	715 Series
Toledo.....	TB600531 2.5K

**WEIGH MODULE AVAILABLE**

Coti Global Sensors	CG23M
Coti Global Sensors	CG59M
Coti Global Sensors	CG82M

Main Dimensions and Accessories



RATED CAPACITY	DIMENSIONS											
	A	B	C	D	E	F	G	H	I	J	K	
1K-5KSE	5.12	1.25	1.25	1.00	3.00	0.50	0.62	0.53	0.50	2.25	1/2 -20UNF	
5KLE-10K	6.75	1.50	1.50	1.50	3.75	0.75	0.75	0.78	0.75	3.00	3/4 -16UNF	

**SPECIFICATIONS**

Rated Output (mV/V)	2.00	Input Impedance	385 +/- 10 ohms
Nonlinearity	+/- 0.03% FS	Output Impedance	350 +/- 3 ohms
Hysteresis	+/- 0.02% FS	Insulation Resistance	5000 Megohms
Repeatability	+/- 0.01% FS	Excitation Voltage	10V AC/DC (20V Max)
Creep (30 minutes)	+/- 0.02% FS	Compensated Temperature Range	-10°C - +40°C
Zero Balance	+/- 1.00% FS	Operating Temperature Range	-20°C - +60°C
Temperature Effect on Zero	+/- 0.0027% of rated output/°C	Safe Overload	150% FS
Temperature Effect on Output	+/- 0.0015% of applied load/°C	Cable Length	20' Standard Cable
Cable Color Code	Input Green +Excitation Black -Excitation	Output White +Signal Red -Signal	Seal Type Welded-Seal, IP67