

# CG-23

▶ **THREADED HOLE OR THROUGH HOLE SINGLE-ENDED SHEAR BEAM**

▶ **ALLOY STEEL**  
NTEP 1:5000 Class III Multiple Cell, IP67

**CENTRAL CAROLINA SCALE, INC 5393 FARRELL ROAD SANFORD NC 27330 (919) 776-7737**



**CG-23 ORDER INFORMATION** PRICING<sup>ii</sup> SUGGESTED LIST PRICE

CG-23 *100lb, 250lb, 500lb, 750lb, 1K, 1.5K.....Threaded Hole	\$ 165.00
CG-23 2K, 2.5K, 4K, 5K SE.....Threaded Hole	\$ 165.00
CG-23 5K LE, 10K.....Threaded Hole	\$ 275.00
CG-23 15K, 20K.....Threaded Hole	\$ 545.00

*SE refers to small envelope • LE refers to large envelope*  
*\*Non-NTEP*

**CG-23-1 ORDER INFORMATION** DISCOUNT C SUGGESTED LIST PRICE

CG-23-1 *100lb, 250lb, 500lb, 750lb, 1K, 1.5K, 2K, 2.5K, 4K, 5K SE....Through Hole	\$ 165.00
CG-23-1 5K LE, 10K.....Through Hole	\$ 275.00
CG-23-1 15K, 20K.....Through Hole	\$ 545.00

*\*Non-NTEP*

**INTERCHANGEABLE PRODUCTS: CG-23-1**

Rice Lake Weighing Systems	RL30002
Artech	30210

**INTERCHANGEABLE PRODUCTS: CG-23**

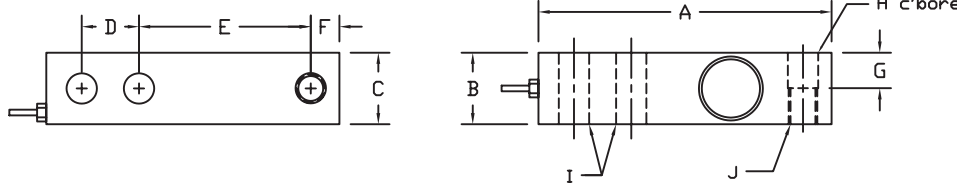
Rice Lake Weighing Systems	RL35023
Sensortronics	65023
Celtron	SQB
Revere	5123
Tedea	3411
Artech	30310
Totalcomp	TSB
HBM	A35

**WEIGH MODULE AVAILABLE**

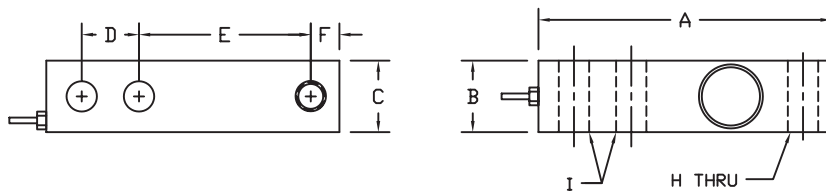
Coti Global Sensors	CG23M
Coti Global Sensors	CG59M
Coti Global Sensors	CG82M

Main Dimensions and Accessories

**CG-23 THREADED LOAD HOLE**



**CG-23-1 NON-THREADED LOAD HOLE (THROUGH HOLE)**



RATED CAPACITY	DIMENSIONS										
	A	B	C	D	E	F	G	H	I	J	
100lb-750lb	5.12	1.25	1.25	1.00	3.00	0.50	0.62	0.53	0.53	1/2	-20UNF
1K-5KSE	5.12	1.25	1.25	1.00	3.00	0.50	0.62	0.53	0.53	1/2	-20UNF
5KLE-10K	6.75	1.50	1.50	1.50	3.75	0.75	0.75	0.78	0.78	3/4	-16UNF
15K-20K	8.88	2.00	2.00	2.00	4.88	1.00	1.00	1.03	1.03		1-14UNF

▶ **SPECIFICATIONS** ◀

Rated Output (mV/V)	3.00	Input Impedance	385 +/- 10 ohms
Nonlinearity	+/- 0.03% FS	Output Impedance	350 +/- 3 ohms
Hysteresis	+/- 0.02% FS	Insulation Resistance	5000 Megohms
Repeatability	+/- 0.01% FS	Excitation Voltage	10V AC/DC (20V Max)
Creep (30 minutes)	+/- 0.02% FS	Compensated Temperature Range	-10°C - +40°C
Zero Balance	+/- 1.00% FS	Operating Temperature Range	-20°C - +60°C
Temperature Effect on Zero	+/- 0.0027% of rated output/°C	Safe Overload	150% FS
Temperature Effect on Output	+/- 0.0015% of applied load/°C	Cable Length	20' Standard Cable
Cable Color Code	Input Output	Seal Type	Environmentally-Sealed, IP67
	Green +Excitation White +Signal		
	Black -Excitation Red -Signal		