

CG-26S

► **COMPRESSION CANISTER**

► **STAINLESS STEEL**

Hermetically Sealed

NTEP 1:10,000 Class III Multiple Cell

CENTRAL CAROLINA SCALE, INC 5393 FARRELL ROAD SANFORD NC 27330 (919) 776-7737



CG-26S ORDER INFORMATION **PRICING^g** **SUGGESTED LIST PRICE**

50K	\$1,023.00
100K	\$1,023.00
120K	\$1,023.00
*Caps included with new purchase	

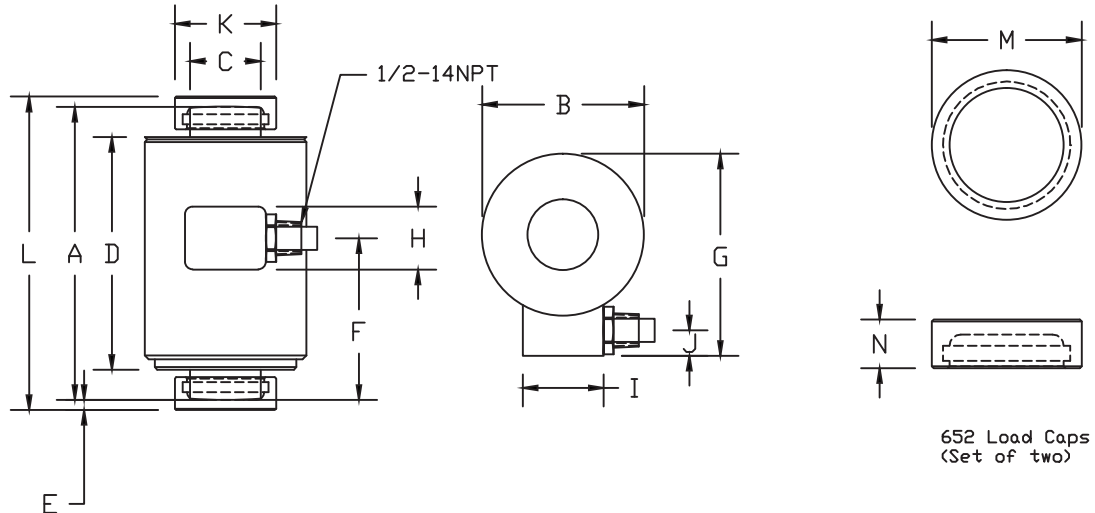
ACCESSORIES **DISCOUNT G** **SUGGESTED LIST PRICE**

652 Caps for load button (Set of two)	\$ 100.00
---------------------------------------	-----------

INTERCHANGEABLE PRODUCTS

Cardinal.....	SCA, HDD
Totalcomp.....	TCSCA
Rice Lake Weighing Systems.....	RLSCA

Main Dimensions and Accessories



RATED CAPACITY	DIMENSIONS													
	A	B	C	D	E	F	G	H	I	J	K	L	M	N
50K-120K Load Cell	7.25	4.00	1.75	5.75	0.75	4.00	5.00	1.55	2.00	0.62	2.50	7.75	-	-
652 Load Caps	-	-	-	-	-	-	-	-	-	-	-	-	2.5	0.82

► **SPECIFICATIONS** ◀

Rated Output (mV/V)	2.00	Input Impedance	1150 +/- 10 ohms
Nonlinearity	+/- 0.03% FS	Output Impedance	1050 +/- 5 ohms
Hysteresis	+/- 0.02% FS	Insulation Resistance	5000 Megohms
Repeatability	+/- 0.01% FS	Excitation Voltage	10V AC/DC (20V Max)
Creep (30 minutes)	+/- 0.02% FS	Compensated Temperature Range	0° - 30°C
Zero Balance	+/- 1.00% FS	Operating Temperature Range	-20°C - +60°C
Temperature Effect on Zero	+/- 0.0027% of rated output/°C	Safe Overload	150% FS
Temperature Effect on Output	+/- 0.0015% of applied load/°C	Cable Length	50' Standard Cable
Cable Color Code	Input Output	Seal Type	Hermetically Sealed, IP67
	Green +Excitation Red +Signal		
	Black -Excitation White -Signal		