

CG-26S2

▶ **ROCKER COLUMN**

▶ **STAINLESS STEEL**

Hermetically Sealed
NTEP 1:10,000 Class III Multiple Cell

CENTRAL CAROLINA SCALE, INC 5393 FARRELL ROAD SANFORD NC 27330 (919) 776-7737



CG-26S2 ORDER INFORMATION PRICING^g SUGGESTED LIST PRICE

30T / 56K \$ 795.00

ACCESSORIES DISCOUNT C SUGGESTED LIST PRICE

656A Load Cup, Upper \$ 95.00
657 Load Cup, Lower \$ 125.00

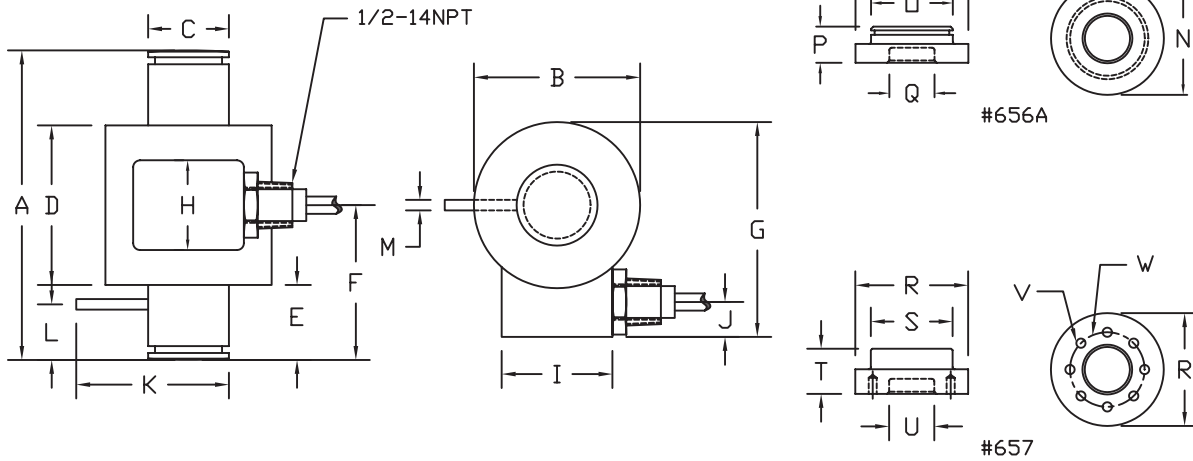
WEIGH MODULES DISCOUNT C SUGGESTED LIST PRICE

Toledo Digital™ Truck Scale Retrofit Kit
CG-26S2-8 Kit includes load cells and upper and lower cups \$8,120.00
CG-26S2-10 Kit includes load cells and upper and lower cups \$10,150.00

INTERCHANGEABLE PRODUCTS

Fairbanks..... LCF-HR-4020-19
Flintec..... RC1

Main Dimensions and Accessories



RATED CAPACITY	DIMENSIONS																						
	A	B	C	D	E	F	G	H	I	J	K	L	M	N	O	P	Q	R	S	T	U	V	W
30T/56K	7.56	3.00	1.46	2.88	2.34	3.78	3.88	1.62	2.00	0.50	2.88	1.00	0.038	-	-	-	-	-	-	-	-	-	-
656A	-	-	-	-	-	-	-	-	-	-	-	-	-	3.75	2.465	1.25	1.5	-	-	-	-	-	-
657	-	-	-	-	-	-	-	-	-	-	-	-	-	-	-	-	-	4.13	2.465	1.69	1.5	M10	2.25

▶ **SPECIFICATIONS** ◀

Rated Output (mV/V)	2.00	Input Impedance	380 +/- 10 ohms
Nonlinearity	+/- 0.03% FS	Output Impedance	350 +/- 5 ohms
Hysteresis	+/- 0.02% FS	Insulation Resistance	5000 Megohms
Repeatability	+/- 0.01% FS	Excitation Voltage	10V AC/DC (20V Max)
Creep (30 minutes)	+/- 0.02% FS	Compensated Temperature Range	0° - 30°C
Zero Balance	+/- 1.00% FS	Operating Temperature Range	-20°C - +60°C
Temperature Effect on Zero	+/- 0.0027% of rated output/°C	Safe Overload	150% FS
Temperature Effect on Output	+/- 0.0015% of applied load/°C	Cable Length	50' Braided Shield Cable
Cable Color Code	Input Green +Excitation Black -Excitation	Output White +Signal Red -Signal	Seal Type Hermetically Sealed, IP67