

CG-26S4

▶ **ROCKER COLUMN**

▶ **STAINLESS STEEL**

Hermetically Sealed

NTEP 1:10,000 Class III Multiple Cell

CENTRAL CAROLINA SCALE, INC 5393 FARRELL ROAD SANFORD NC 27330 (919) 776-7737



CG-26S4 ORDER INFORMATION

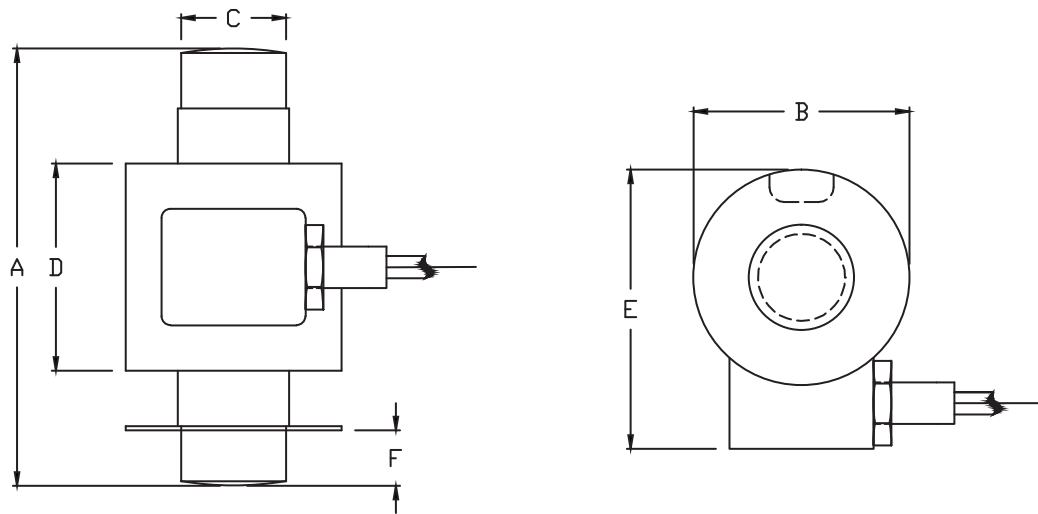
PRICING[†] SUGGESTED LIST PRICE

15t	\$ 760.00
20t	\$ 760.00
25t	\$ 760.00
30t	\$ 760.00
40t	\$ 760.00
50t	\$ 895.00
60t	\$ 895.00

INTERCHANGEABLE PRODUCTS

HBM..... C16

Main Dimensions and Accessories



RATED CAPACITY	DIMENSIONS					
	A	B	C	D	E	F
15T-40T	5.90	3.00	1.73	3.23	4.00	0.62
50T-60T	8.26	3.00	1.73	3.23	4.00	0.62

▶ **SPECIFICATIONS** ◀

Rated Output (mV/V)	2.00	Input Impedance	700 +/- 10 ohms
Nonlinearity	+/- 0.03% FS	Output Impedance	700 +/- 5 ohms
Hysteresis	+/- 0.02% FS	Insulation Resistance	5000 Megohms
Repeatability	+/- 0.01% FS	Excitation Voltage	10V AC/DC (20V Max)
Creep (30 minutes)	+/- 0.02% FS	Compensated Temperature Range	0° - 30°C
Zero Balance	+/- 1.00% FS	Operating Temperature Range	-20°C - +60°C
Temperature Effect on Zero	+/- 0.0027% of rated output/°C	Safe Overload	150% FS
Temperature Effect on Output	+/- 0.0015% of applied load/°C	Cable Length	50' Braided Shield
Cable Color Code	Input Green +Excitation Black -Excitation	Output White +Signal Red -Signal	Seal Type Hermetically Sealed, IP67