

CG-26S6

▶ **ROCKER COLUMN**

▶ **STAINLESS STEEL**

Hermetically Sealed
NTEP 1:10,000 Class III Multiple Cell

CENTRAL CAROLINA SCALE, INC 5393 FARRELL ROAD SANFORD NC 27330 (919) 776-7737



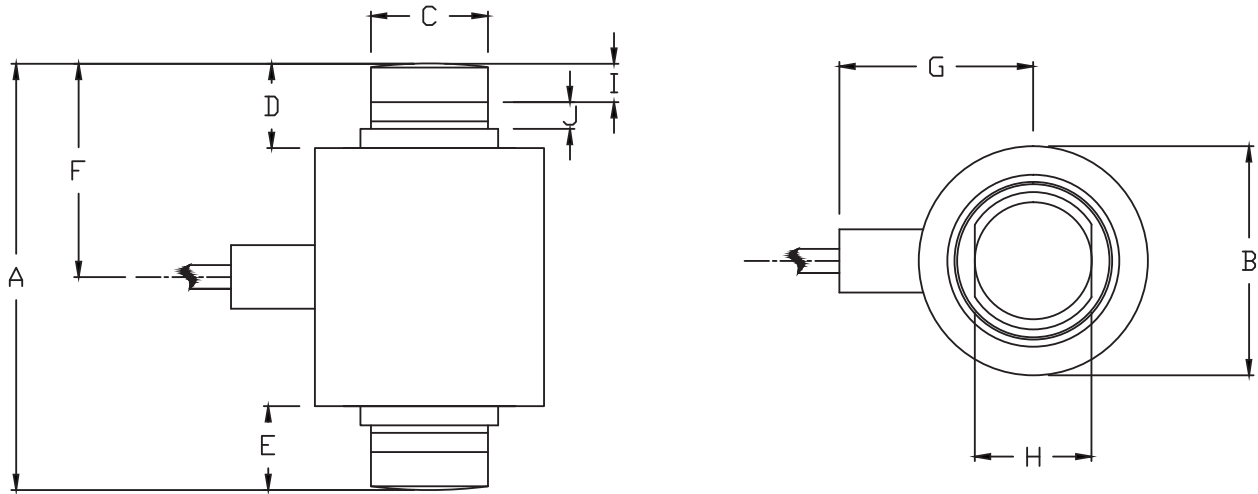
CG-26S6 ORDER INFORMATION PRICING^g SUGGESTED LIST PRICE

30t	\$ 895.00
40t	\$ 895.00
50t	\$1155.00

INTERCHANGEABLE PRODUCTS

Fairbanks.....	LCF-HR-4020-2A 30t
Fairbanks.....	LCF-HR-4020-4A 50t
Fairbanks.....	70510 30t
Flintec.....	RC3

Main Dimensions and Accessories



RATED CAPACITY	DIMENSIONS											
	A	B	C	D	E	F	G	H	I	J		
30t	5.51	3.00	1.53	1.10	1.02	2.75	3.30	1.53	0.51	0.25		
40t	5.90	3.00	1.53	1.30	1.22	2.95	3.30	1.53	0.51	0.46		
50t	7.00	3.90	1.73	1.34	1.26	3.50	3.71	1.73	0.67	0.33		

▶ **SPECIFICATIONS** ◀

Rated Output (mV/V)	2.00	Input Impedance	1080 +/- 10 ohms
Nonlinearity	+/- 0.03% FS	Output Impedance	1000 +/- 5 ohms
Hysteresis	+/- 0.02% FS	Insulation Resistance	5000 Megohms
Repeatability	+/- 0.01% FS	Excitation Voltage	10V AC/DC (20V Max)
Creep (30 minutes)	+/- 0.02% FS	Compensated Temperature Range	0°C - 30°C
Zero Balance	+/- 1.00% FS	Operating Temperature Range	-20°C - +60°C
Temperature Effect on Zero	+/- 0.0027% of rated output/°C	Safe Overload	150% FS
Temperature Effect on Output	+/- 0.0015% of applied load/°C	Cable Length	50' Braided Cable
Cable Color Code	Input Output	Seal Type	Hermetically Sealed, IP68
	Green +Excitation White +Signal		
	Black -Excitation Red -Signal		