

CG-51

▶ SINGLE POINT

▶ Stainless Steel

CENTRAL CAROLINA SCALE, INC 5393 FARRELL ROAD SANFORD NC 27330 (919) 776-7737



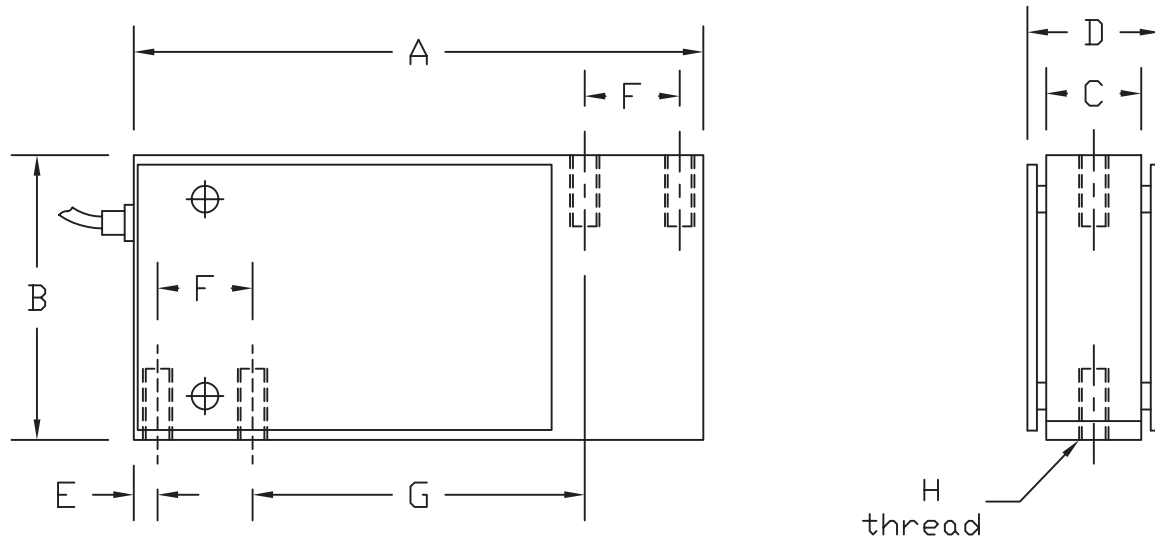
CG-51 ORDER INFORMATION **PRICINGⁱⁱ SUGGESTED LIST PRICE**

10 lb	\$ 375.00
15 lb	\$ 375.00
25 lb	\$ 375.00
50 lb	\$ 440.00
100 lb	\$ 440.00
200 lb	\$ 440.00

INTERCHANGEABLE PRODUCTS

NCI	Mark III
NCI	Mark IX
Sensortronics.....	60051
Artech.....	SS60210

Main Dimensions and Accessories



RATED CAPACITY	DIMENSIONS									
		A	B	C	D	E	F	G	H	
10-25LB		4.63	2.50	0.50	0.70	0.25	0.75	2.62	1/4-28UNF x0.50dp	
50-200LB		4.63	2.50	0.75	0.95	0.25	0.75	2.62	1/4-28UNF x0.50dp	

→ SPECIFICATIONS ←

Rated Output (mV/V)	2.00 +/- 10%	Input Impedance	385 +/- 10 ohms
Nonlinearity	+/- 0.03% FS	Output Impedance	350 +/- 3 ohms
Hysteresis	+/- 0.02% FS	Insulation Resistance	5000 Megohms
Repeatability	+/- 0.02% FS	Excitation Voltage	10V AC/DC (20V Max)
Creep (30 minutes)	+/- 0.03% FS	Compensated Temperature Range	-10°C - +40°C
Zero Balance	+/- 1.00% FS	Operating Temperature Range	-20°C - +60°C
Temperature Effect on Zero	+/- 0.002% of rated output/°C	Safe Overload	150% FS
Temperature Effect on Output	+/- 0.001% of applied load/°C	Cable Length	10' Standard Cable
Cable Color Code	Input Output	Seal Type	Environmentally Sealed, Potted, IP67
	Red +Excitation Green +Signal	Max Platform Size:	10 - 25 lb: 203X254 mm
	Black -Excitation White -Signal		50 - 200 lb: 304X304 mm