

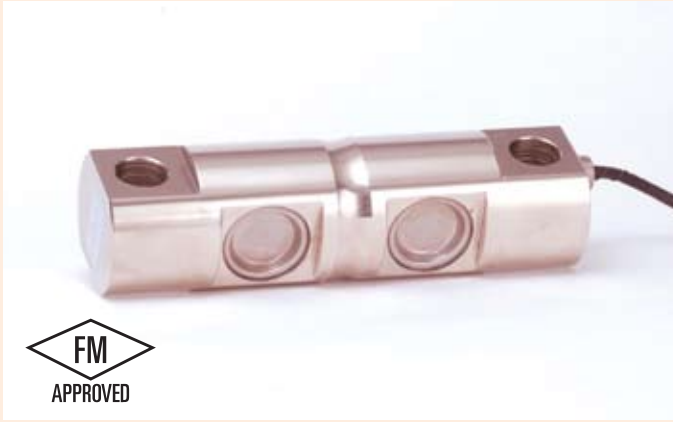


# CG-5103 SSW

▶ **DOUBLE-ENDED  
SHEAR BEAM**

▶ **STAINLESS STEEL WELDED**

CENTRAL CAROLINA SCALE, INC 5393 FARRELL ROAD SANFORD NC 27330 (919) 776-7737



### CG-5103 SSW ORDER INFORMATION PRICING SUGGESTED LIST PRICE

10K, 20K	\$ 750.00
30K, 40K, 50K, 60K	\$ 825.00

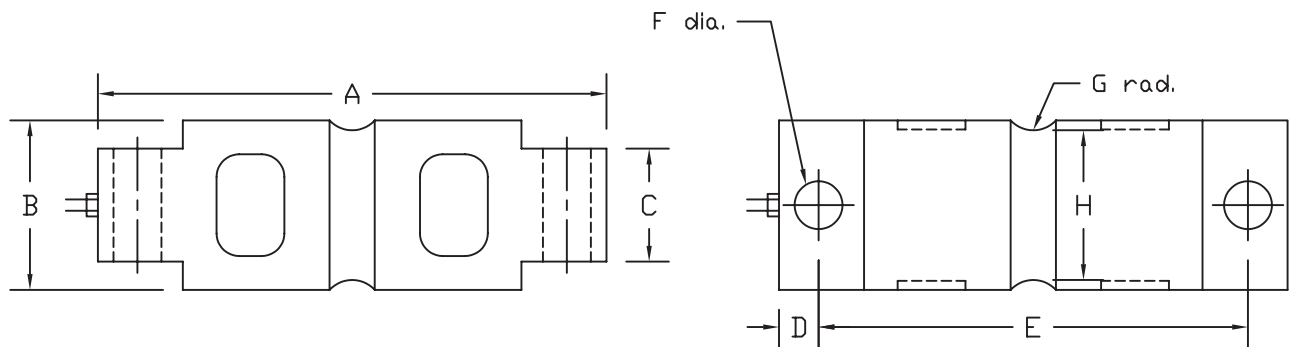
### INTERCHANGEABLE PRODUCTS

Rice Lake Weighing Systems.....	RL7000SS
Rice Lake Weighing Systems.....	RL71000 HE
Revere Transducers.....	9103
Artech.....	SS70210

### WEIGH MODULES

Coti Global Sensors	CG03M
---------------------	-------

Main Dimensions and Accessories



RATED CAPACITY	DIMENSIONS										
	A	B	C	D	E	F	G	H			
10K	8.12	1.70	1.12	0.62	6.88	0.66	0.50	1.48			
20K	8.12	1.95	1.12	0.62	6.88	0.66	0.50	1.48			
30K-60K	10.25	3.00	2.37	0.88	8.50	1.06	1.00	2.73			

## SPECIFICATIONS

Rated Output (mV/V)	3.00	Input Impedance	700 +/- 10 ohms
Nonlinearity	+/- 0.03% FS	Output Impedance	700 +/- 5 ohms
Hysteresis	+/- 0.02% FS	Insulation Resistance	5000 Megohms
Repeatability	+/- 0.01% FS	Excitation Voltage	10V AC/DC (20V Max)
Creep (30 minutes)	+/- 0.02% FS	Compensated Temperature Range	-10°C - +40°C
Zero Balance	+/- 1.00% FS	Operating Temperature Range	-20°C - +60°C
Temperature Effect on Zero	+/- 0.0027% of rated output/°C	Safe Overload	150% FS
Temperature Effect on Output	+/- 0.0015% of applied load/°C	Cable Length	50' Braided Shield Cable
Cable Color Code	Input	Output	Seal Type
	Green +Excitation	White +Signal	Stainless Steel Welded
	Black -Excitation	Red -Signal	