

# CG-5103

▶ **DOUBLE-ENDED SHEAR BEAM**

▶ **ALLOY STEEL**  
NTEP 1:10,000 Class III Multiple Cell

**CENTRAL CAROLINA SCALE, INC 5393 FARRELL ROAD SANFORD NC 27330 (919) 776-7737**



**CG-5103 ORDER INFORMATION** PRICING SUGGESTED LIST PRICE

5K, 10K, 20K	\$ 625.00
30K, 40K, 50K, 60K	\$ 725.00
100K	\$1450.00
150K	\$1450.00
200K, 250k	\$2425.00

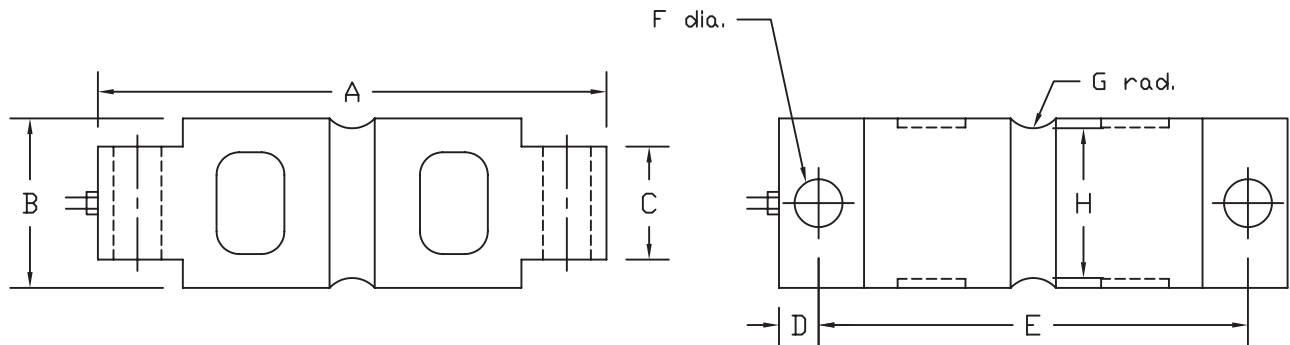
**INTERCHANGEABLE PRODUCTS**

Rice Lake Weighing Systems.....	RL70000
Revere Transducers.....	5103
Celtron.....	CSB
Artech.....	70210
Totalcomp.....	GDE03
Totalcomp.....	TDE03
Sensortronics.....	60058

**WEIGH MODULES**

Coti Global Sensors	CG03M
---------------------	-------

Main Dimensions and Accessories



RATED CAPACITY	DIMENSIONS										
	A	B	C	D	E	F	G	H			
5K-10K	8.12	1.70	1.12	0.62	6.88	0.66	0.50	1.48			
20K	8.12	1.95	1.12	0.62	6.88	0.66	0.50	1.48			
30K-60K	10.25	3.00	2.37	0.88	8.50	1.06	1.00	2.73			
100K	11.25	3.50	2.50	0.88	9.50	1.06	1.50	3.24			
150K	11.25	3.90	2.80	0.88	9.50	1.06	1.50	3.64			
200K-250K	16.10	5.38	4.60	1.55	13.00	1.56	2.00	5.17			

**SPECIFICATIONS**

Rated Output (mV/V)	3.00	Input Impedance	700 +/- 10 ohms
Nonlinearity	+/- 0.03% FS	Output Impedance	700 +/- 5 ohms
Hysteresis	+/- 0.02% FS	Insulation Resistance	5000 Megohms
Repeatability	+/- 0.01% FS	Excitation Voltage	10V AC/DC (20V Max)
Creep (30 minutes)	+/- 0.02% FS	Compensated Temperature Range	-10°C - +40°C
Zero Balance	+/- 1.00% FS	Operating Temperature Range	-20°C - +60°C
Temperature Effect on Zero	+/- 0.0027% of rated output/°C	Safe Overload	150% FS
Temperature Effect on Output	+/- 0.0015% of applied load/°C	Cable Length	60' Braided Shield Cable
Cable Color Code	Input	Output	Seal Type
	Green +Excitation	White +Signal	Environmentally-Sealed, IP67
	Black -Excitation	Red -Signal	