

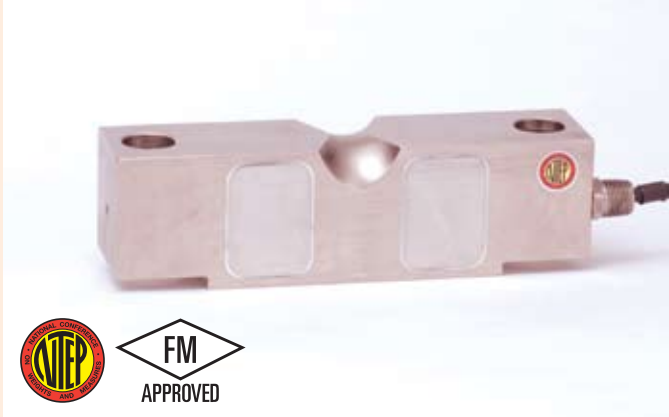
# CG-58

▶ **DOUBLE-ENDED BEAM**

▶ **ALLOY STEEL**

NTEP 1:10,000 Class III Multiple Cell

CENTRAL CAROLINA SCALE, INC 5393 FARRELL ROAD SANFORD NC 27330 (919) 776-7737



**CG-58 ORDER INFORMATION**      PRICING<sup>ii</sup> SUGGESTED LIST PRICE

*10K, *20K	\$ 610.00
25K	\$ 610.00
40K, 50K SE	\$ 745.00
50K, 60K, 75K	\$ 810.00
100K, 125K	\$1475.00
*NON-NTEP	

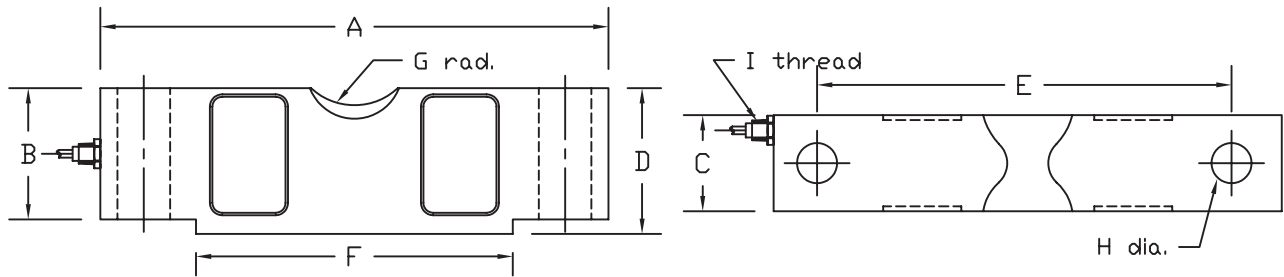
**INTERCHANGEABLE PRODUCTS**

Rice Lake Weighing Systems.....	RL75058
Sensortronics.....	65058A
Teda.....	4158
Celtron.....	CLB
Artech.....	70310
Totalcomp.....	TDE58
Revere.....	5303

**WEIGH MODULES**

Coti Global Sensors.....	CG-TSA, CG-TWA
--------------------------	----------------

Main Dimensions and Accessories



RATED CAPACITY	DIMENSIONS										
	A	B	C	D	E	F	G	H	I		
10K-25K	7.75	1.70	1.69	1.94	6.50	5.00	0.75	0.68	1/4-18NPT		
40K-50KSE	10.25	2.10	1.94	2.44	8.50	6.39	1.00	0.81	1/4-18NPT		
50K-75K	10.25	2.65	2.44	2.94	8.50	6.39	1.00	1.06	1/2-14NPT		
100K-125K	15.25	3.43	2.90	3.86	12.75	9.00	1.50	1.62	1/2-14NPT		

▶ **SPECIFICATIONS** ◀

Rated Output (mV/V)	3.00	Input Impedance	700 +/- 10 ohms
Nonlinearity	+/- 0.03% FS	Output Impedance	700 +/- 5 ohms
Hysteresis	+/- 0.02% FS	Insulation Resistance	5000 Megohms
Repeatability	+/- 0.01% FS	Excitation Voltage	10V AC/DC (20V Max)
Creep (30 minutes)	+/- 0.02% FS	Compensated Temperature Range	-10°C - +40°C
Zero Balance	+/- 1.00% FS	Operating Temperature Range	-20°C - +60°C
Temperature Effect on Zero	+/- 0.0027% of rated output/°C	Safe Overload	150% FS
Temperature Effect on Output	+/- 0.0015% of applied load/°C	Cable Length	50' Braided Shield Cable
Cable Color Code	Input                      Output	Seal Type	Environmentally-Sealed, IP67
	Green +Excitation      White +Signal		
	Black -Excitation      Red -Signal		