

CG-60030

▶ SINGLE-ENDED BEAM

▶ ALLOY STEEL

CENTRAL CAROLINA SCALE, INC 5393 FARRELL ROAD SANFORD NC 27330 (919) 776-7737



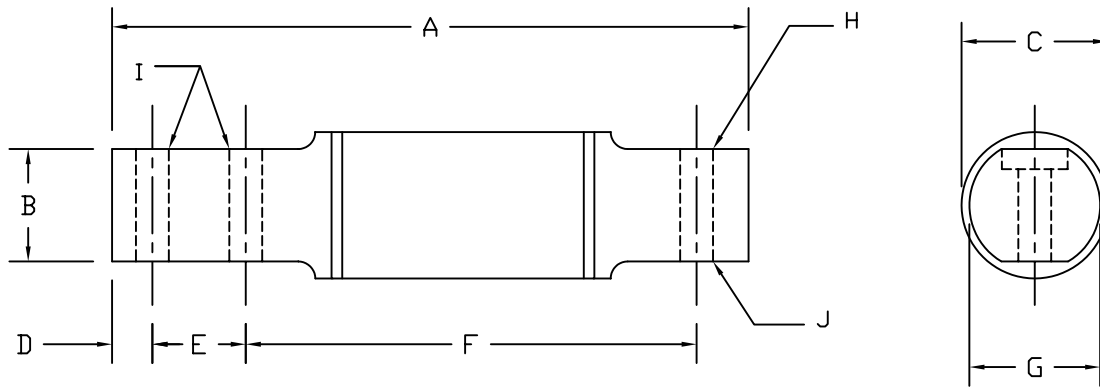
CG-60030 ORDER INFORMATION **PRICING** SUGGESTED LIST PRICE

50 lb	\$310.00
75 lb	\$310.00
150 lb	\$310.00
300 lb	\$310.00

INTERCHANGEABLE PRODUCTS

Electroscale.....	LCB Base
Sensortronics.....	60030

Main Dimensions and Accessories



RATED CAPACITY	DIMENSIONS										
	A	B	C	D	E	F	G	H	I	J	K
50-300LB	3.75	0.62	1.12	0.25	0.50	2.75	1.00	0.17	0.26		

▶ SPECIFICATIONS ◀

Rated Output (mV/V)	3.00	Input Impedance	385 +/- 10 ohms	
Nonlinearity	+/- 0.03% FS	Output Impedance	350 +/- 3 ohms	
Hysteresis	+/- 0.03% FS	Insulation Resistance	5000 Megohms	
Repeatability	+/- 0.01% FS	Excitation Voltage	10V AC/DC (20V Max)	
Creep (30 minutes)	+/- 0.02% FS	Compensated Temperature Range	-10°C - +40°C	
Zero Balance	+/- 1.00% FS	Operating Temperature Range	-20°C - +60°C	
Temperature Effect on Zero	+/- 0.0027% of rated output/°C	Safe Overload	150% FS	
Temperature Effect on Output	+/- 0.0015% of applied load/°C	Cable Length	30' Standard Cable	
Cable Color Code	Input Green +Excitation Black -Excitation	Output White +Signal Red -Signal	Seal Type	Environmentally-Sealed, IP65