

CG-60040

▶ SINGLE-ENDED BEAM

▶ STAINLESS STEEL

CENTRAL CAROLINA SCALE, INC 5393 FARRELL ROAD SANFORD NC 27330 (919) 776-7737



CG-60040 ORDER INFORMATION **PRICING** SUGGESTED LIST PRICE

25 lb, 50 lb, 75 lb, 100 lb	\$245.00
150 lb, 250 lb, 500 lb	\$245.00

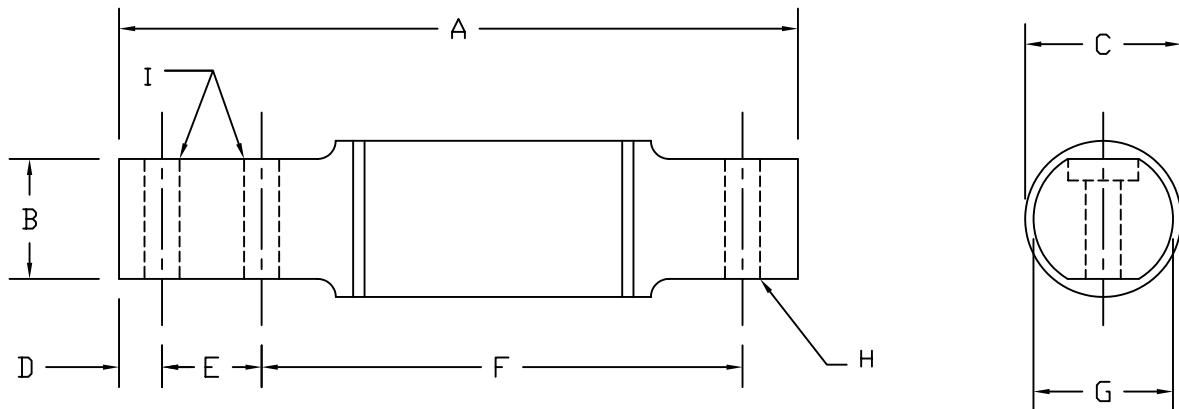
INTERCHANGEABLE PRODUCTS

Rice Lake Weighing Systems.....	RL50210
Rice Lake Weighing Systems.....	RL60040SST
Revere Transducers.....	5503
Revere Transducers.....	9503
Artech.....	50210
Sensortronics.....	60040

WEIGH MODULE AVAILABLE

Coti Global Sensors	CG59M
---------------------	-------

Main Dimensions and Accessories



RATED CAPACITY	DIMENSIONS										
	A	B	C	D	E	F	G	H	I		
25-500LB	2.81	0.62	1.30	0.25	0.50	1.81	1.00	0.26	0.26		

▶ SPECIFICATIONS ◀

Rated Output (mV/V)	3.00	Input Impedance	385 +/- 10 ohms
Nonlinearity	+/- 0.03% FS	Output Impedance	350 +/- 3 ohms
Hysteresis	+/- 0.03% FS	Insulation Resistance	5000 Megohms
Repeatability	+/- 0.01% FS	Excitation Voltage	10V AC/DC (20V Max)
Creep (30 minutes)	+/- 0.02% FS	Compensated Temperature Range	-10°C - +40°C
Zero Balance	+/- 1.00% FS	Operating Temperature Range	-20°C - +60°C
Temperature Effect on Zero	+/- 0.0027% of rated output/°C	Safe Overload	150% FS
Temperature Effect on Output	+/- 0.0015% of applied load/°C	Cable Length	30' Standard Cable
Cable Color Code	Input	Output	Seal Type
	Red +Excitation	Green +Signal	Environmentally-Sealed, IP65
	Black -Excitation	White -Signal	