

CG-60048

▶ SINGLE POINT

▶ STAINLESS STEEL

CENTRAL CAROLINA SCALE, INC 5393 FARRELL ROAD SANFORD NC 27330 (919) 776-7737



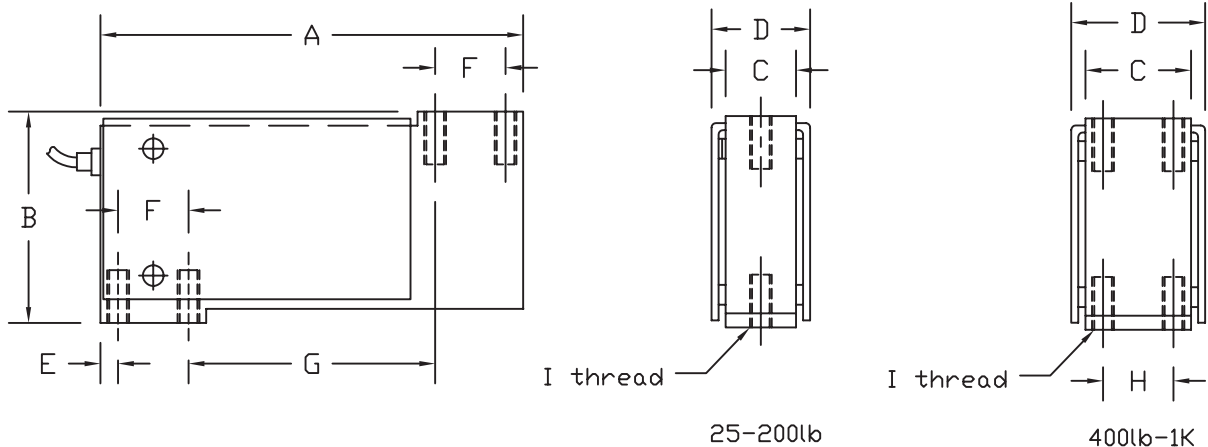
CG-60048 ORDER INFORMATION PRICINGⁱⁱ SUGGESTED LIST PRICE

25 lb	\$ 495.00
50 lb	\$ 495.00
100 lb	\$ 495.00
200 lb	\$ 495.00
400 lb	\$ 575.00
500 lb	\$ 575.00
1K	\$ 650.00

INTERCHANGEABLE PRODUCTS

NCI®/Weigh-tronix®..... Mark V
Sensortronics.....60048SS

Main Dimensions and Accessories



RATED CAPACITY	DIMENSIONS								
	A	B	C	D	E	F	G	H	I
25-200LB	6.00	3.00	1.00	1.25	0.25	1.00	3.50	-	1/4-28UNF x 0.75dp (4 plcs)
400-500LB	6.00	3.00	1.00	1.25	0.25	1.00	3.50	0.50	1/4-28UNF x 0.75dp (8 plcs)
1K	6.00	3.00	1.50	1.75	0.25	1.00	3.50	1.00	5/16-24UNF x 0.75dp (8 plcs)

▶ SPECIFICATIONS ◀

Rated Output (mV/V)	2.00 +/- 10%	Input Impedance	385 +/- 10 ohms
Nonlinearity	+/- 0.03% FS	Output Impedance	350 +/- 3 ohms
Hysteresis	+/- 0.02% FS	Insulation Resistance	5000 Megohms
Repeatability	+/- 0.02% FS	Excitation Voltage	10V AC/DC (20V Max)
Creep (30 minutes)	+/- 0.03% FS	Compensated Temperature Range	-10°C - +40°C
Zero Balance	+/- 1.00% FS	Operating Temperature Range	-20°C - +60°C
Temperature Effect on Zero	+/- 0.002% of rated output/°C	Safe Overload	150% FS
Temperature Effect on Output	+/- 0.001% of applied load/°C	Cable Length	10' Standard Cable
Cable Color Code	Input Green +Excitation Black -Excitation	Output White +Signal Red -Signal	Seal Type Environmentally Sealed, Potted, IP67
			Max Platform Size: 25 - 500 lb: 508X508 mm 1000 lb: 762X762 mm