

CG-BBS

▶ SINGLE-ENDED BEAM

▶ STAINLESS STEEL

CENTRAL CAROLINA SCALE, INC 5393 FARRELL ROAD SANFORD NC 27330 (919) 776-7737



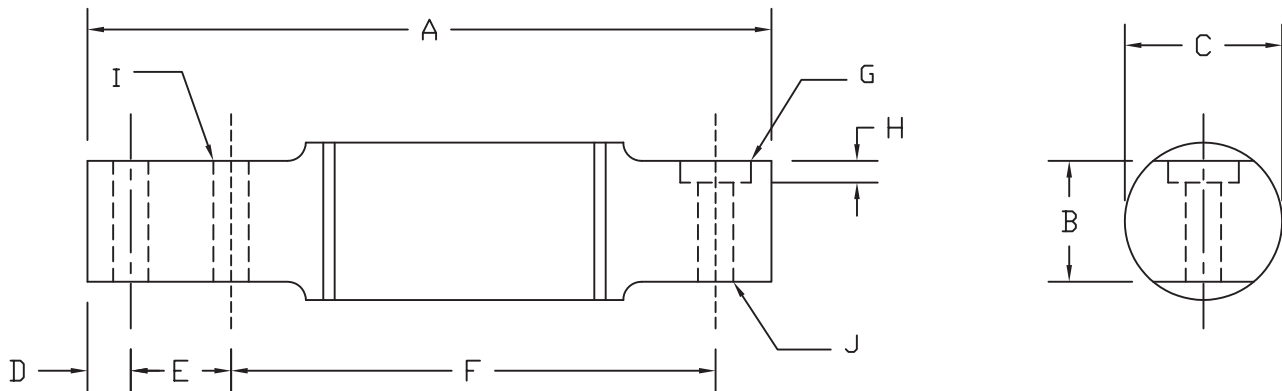
CG-BBS ORDER INFORMATION PRICING[†] SUGGESTED LIST PRICE

50 lb, 100lb, 200 lb, 250 lb, 500 lb, 1K SE	\$ 440.00
1KLE	\$ 665.00
2.5K	\$ 665.00
5K	\$ 1100.00
7.5K	\$ 1100.00

INTERCHANGEABLE PRODUCTS

Rice Lake Weighing Systems.....	RL40BBS
Sensortronics.....	60007
BLH	LBG1
Fairbanks	3-481XX-1, 3-486XX-1
HBM.....	BBS
Artech.....	40310

Main Dimensions and Accessories



RATED CAPACITY	DIMENSIONS											
	A	B	C	D	E	F	G	H	I	J		
50LB-100LB	6.00	1.06	1.26	0.38	0.88	4.25	-	-	0.31	0.31		
200LB-1K	6.62	1.06	1.26	0.50	1.12	4.25	-	-	0.51	0.51		
1KLE-2.5K	11.38	1.25	2.00	0.50	1.75	8.25	1.19	0.12	0.53	0.62		
5K-7.5K	12.75	2.75	3.50	0.75	2.00	8.50	1.38	0.19	0.78	0.76		

▶ SPECIFICATIONS ◀

Rated Output (mV/V)	2.00	Input Impedance 50 lb - 1 KSE	800 +/- 10 ohms
Nonlinearity	+/- 0.03% FS	Output Impedance 50 lb - 1 KSE	750 +/- 3 ohms
Hysteresis	+/- 0.03% FS	Input Impedance 1 Kle - 7.5 K	380 +/- 10 ohms
Repeatability	+/- 0.01% FS	Output Impedance 1 Kle - 7.5 K	350 +/- 3 ohms
Creep (30 minutes)	+/- 0.02% FS	Insulation Resistance	5000 Megohms
Zero Balance	+/- 1.00% FS	Excitation Voltage	10V AC/DC (20V Max)
Temperature Effect on Zero	+/- 0.0027% of rated output/°C	Compensated Temperature Range	-10°C - +40°C
Temperature Effect on Output	+/- 0.0015% of applied load/°C	Operating Temperature Range	-20°C - +60°C
Cable Color Code	Input Green +Excitation Black -Excitation	Output White +Signal Red -Signal	Safe Overload 150% FS
			Cable Length 30' Standard Cable
			Seal Type Environmentally-Sealed, IP67