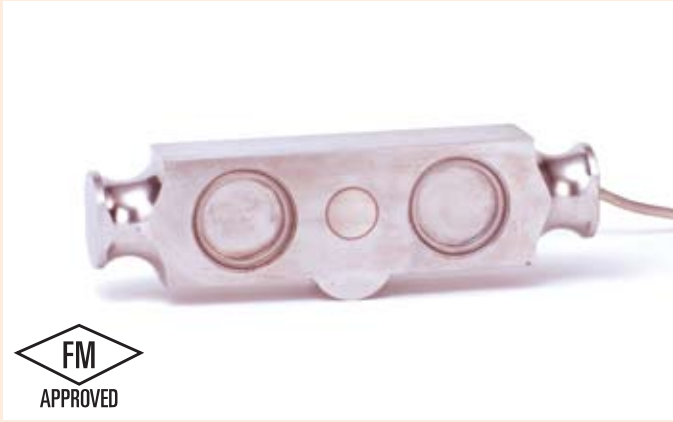


# CG-BE40 SSW

▶ **DOUBLE-ENDED BEAM**

▶ **STAINLESS STEEL**  
Welded-Seal, IP67

**CENTRAL CAROLINA SCALE, INC 5393 FARRELL ROAD SANFORD NC 27330 (919) 776-7737**

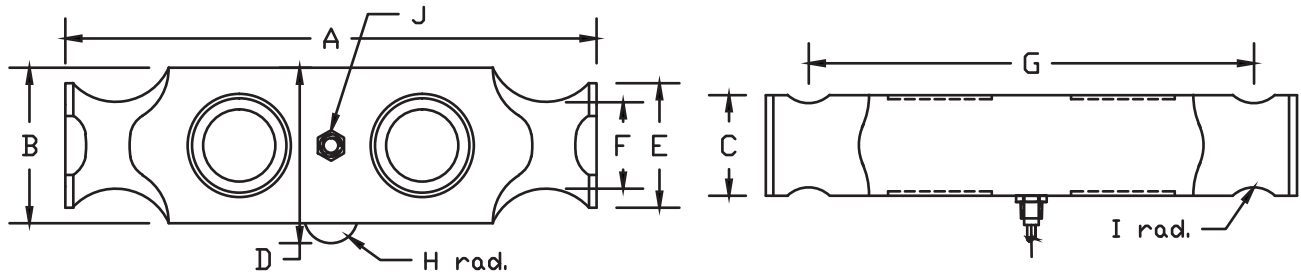


CG-BE40 SSW ORDER INFORMATION	PRICING	SUGGESTED LIST PRICE
25K, 40K, 50K SE, 60K SE		\$ 765.00
50K, 60K, 75K		\$ 975.00
100K, 125K		\$1800.00

**INTERCHANGEABLE PRODUCTS**  
Sensortronics..... 65040S

**WEIGH MODULE AVAILABLE**  
Coti Global Sensors CG-BE40M

Main Dimensions and Accessories



RATED CAPACITY	DIMENSIONS											
	A	B	C	D	E	F	G	H	I	J		
25K-60KSE	8.25	2.44	1.94	2.97	2.00	1.63	7.25	0.50	0.50	1/4-18NPT		
50K-75K	11.50	2.94	1.94	3.47	2.20	1.70	10.00	1.00	0.75	1/2-14NPT		
100K-125K	14.50	3.86	2.90	4.68	3.20	2.44	12.50	1.50	1.00	1/2-14NPT		

▶ **SPECIFICATIONS** ◀

Rated Output (mV/V)	3.00	Input Impedance	700 +/- 10 ohms
Nonlinearity	+/- 0.03% FS	Output Impedance	700 +/- 5 ohms
Hysteresis	+/- 0.02% FS	Insulation Resistance	5000 Megohms
Repeatability	+/- 0.01% FS	Excitation Voltage	10V AC/DC (20V Max)
Creep (30 minutes)	+/- 0.02% FS	Compensated Temperature Range	-10°C - +40°C
Zero Balance	+/- 1.00% FS	Operating Temperature Range	-20°C - +60°C
Temperature Effect on Zero	+/- 0.0027% of rated output/°C	Safe Overload	150% FS
Temperature Effect on Output	+/- 0.0015% of applied load/°C	Cable Length	50' Braided Shield Cable
Cable Color Code	Input	Output	Seal Type
	Green +Excitation	White +Signal	Welded-Seal, IP67
	Black -Excitation	Red -Signal	