

CG-BLC-2

▶ **DOUBLE-ENDED BEAM**

▶ **ALLOY STEEL**

NTEP 1:10,000 Class III, Multiple Cell

CENTRAL CAROLINA SCALE, INC 5393 FARRELL ROAD SANFORD NC 27330 (919) 776-7737



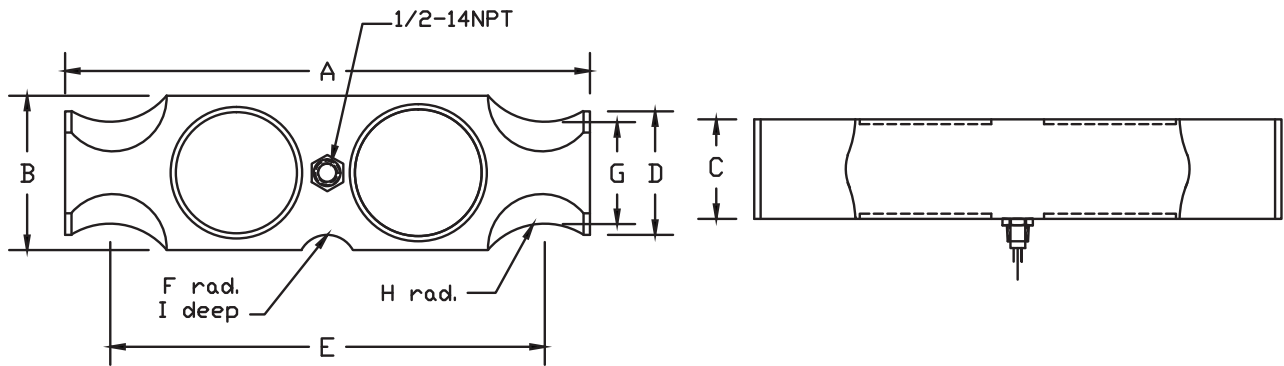
CG-BLC-2 ORDER INFORMATION PRICING: SUGGESTED LIST PRICE

50K	\$1012.00
65K	\$1012.00
100K	\$1012.00

INTERCHANGEABLE PRODUCTS

Revere Transducers.....	9803
NV Technologies.....	BLC-2-XX-N
Thurman.....	10088970A 50K

Main Dimensions and Accessories



RATED CAPACITY	DIMENSIONS												
			A	B	C	D	E	F	G	H	I		
50K-100K			10.25	3.00	1.94	2.40	8.50	1.00	2.06	1.00	.311		

→ **SPECIFICATIONS** ←

Rated Output (mV/V)	3.00	Input Impedance	700 +/- 10 ohms
Nonlinearity	+/- 0.03% FS	Output Impedance	700 +/- 5 ohms
Hysteresis	+/- 0.02% FS	Insulation Resistance	5000 Megohms
Repeatability	+/- 0.01% FS	Excitation Voltage	10V AC/DC (20V Max)
Creep (30 minutes)	+/- 0.02% FS	Compensated Temperature Range	-10°C - +40°C
Zero Balance	+/- 1.00% FS	Operating Temperature Range	-20°C - +60°C
Temperature Effect on Zero	+/- 0.0027% of rated output/°C	Safe Overload	150% FS
Temperature Effect on Output	+/- 0.0015% of applied load/°C	Cable Length	50' Braided Shield Cable
Cable Color Code	Input	Output	Seal Type
	Green +Excitation	White +Signal	Environmentally-Sealed, IP67
	Black -Excitation	Red -Signal	