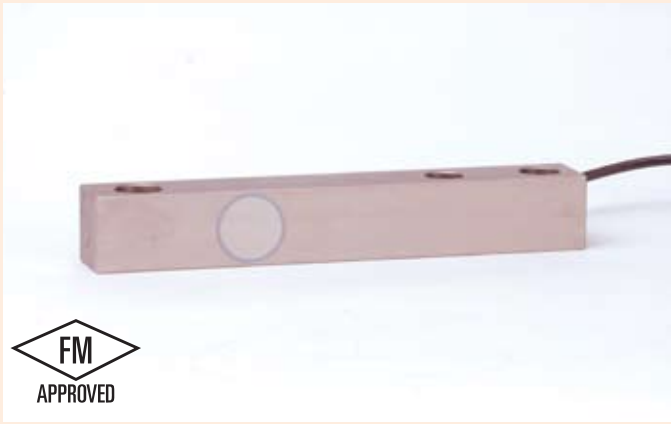


# CG-BLF

▶ SINGLE-ENDED BEAM

▶ ALLOY STEEL

CENTRAL CAROLINA SCALE, INC 5393 FARRELL ROAD SANFORD NC 27330 (919) 776-7737



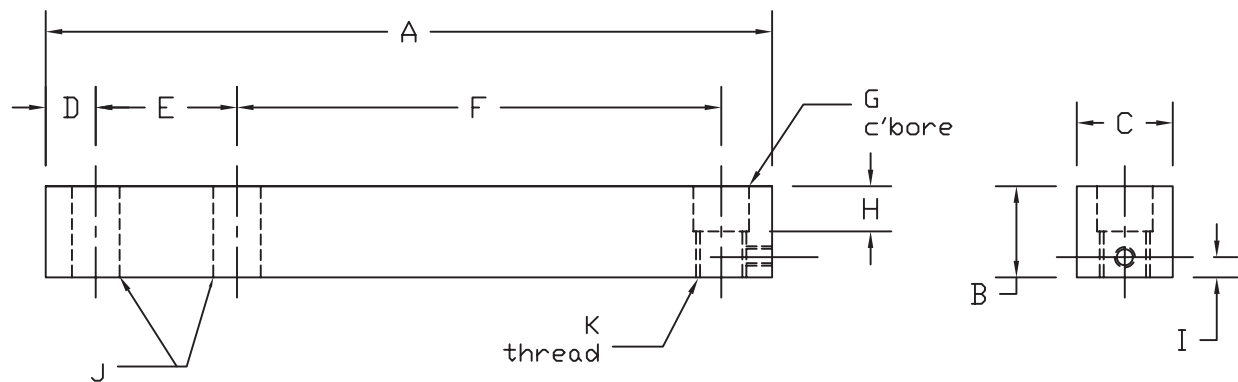
### CG-BLF ORDER INFORMATION PRICING<sup>†</sup> SUGGESTED LIST PRICE

1.5K	\$525.00
2.5K	\$525.00
5K	\$625.00

### INTERCHANGEABLE PRODUCTS

Fairbanks .....	3-53581-X
Fairbanks .....	3-52921-1
HBM.....	BLF
Rice Lake.....	RLBLF

Main Dimensions and Accessories



RATED CAPACITY	DIMENSIONS										
	A	B	C	D	E	F	G	H	I	J	K
1.5K-2.5K	9.00	1.13	1.25	0.62	1.75	6.00	0.69	0.50	0.25	0.53	5/8-18UNF
5K	10.00	1.44	1.50	0.75	2.00	6.25	0.94	0.50	0.50	0.78	7/8-14UNF

### SPECIFICATIONS

Rated Output (mV/V)	2.00	Input Impedance	1080 +/- 10 ohms
Nonlinearity	+/- 0.03% FS	Output Impedance	1000 +/- 5 ohms
Hysteresis	+/- 0.03% FS	Insulation Resistance	5000 Megohms
Repeatability	+/- 0.01% FS	Excitation Voltage	10V AC/DC (20V Max)
Creep (30 minutes)	+/- 0.02% FS	Compensated Temperature Range	-10°C - +40°C
Zero Balance	+/- 1.00% FS	Operating Temperature Range	-20°C - +60°C
Temperature Effect on Zero	+/- 0.0027% of rated output/°C	Safe Overload	150% FS
Temperature Effect on Output	+/- 0.0015% of applied load/°C	Cable Length	30' Standard Cable
Cable Color Code	Input	Output	Seal Type
	Green +Excitation	White +Signal	Environmentally-Sealed, IP67
	Black -Excitation	Red -Signal	