

# CG-DB50000S

▶ **DOUBLE-ENDED BEAM**

▶ **STAINLESS STEEL**  
NTEP 1:10,000 CLASS IML MULTIPLE CELL

CENTRAL CAROLINA SCALE, INC    5393 FARRELL ROAD    SANFORD NC 27330    (919) 776-7737



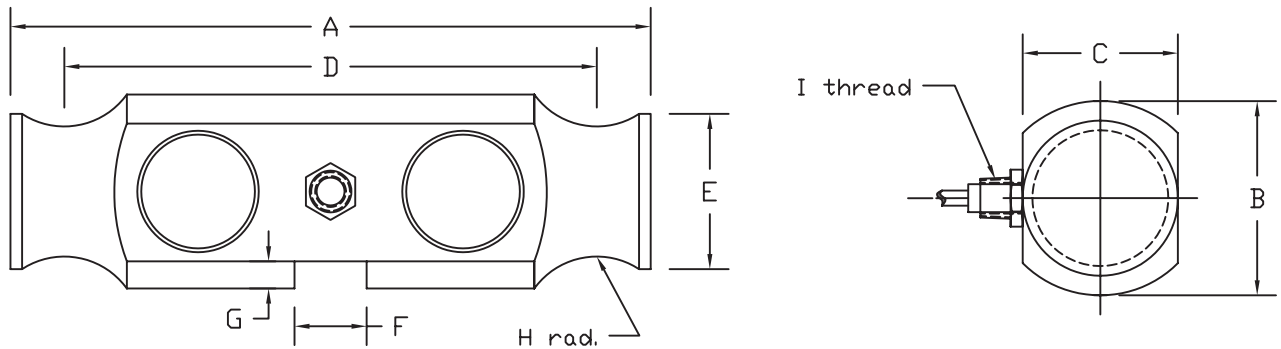
**CG-DB50000S ORDER INFORMATION    PRICING<sup>ii</sup> SUGGESTED LIST PRICE**

35K	\$1094.50
50K	\$1094.50
75K	\$1094.50

**INTERCHANGEABLE PRODUCTS**

Cardinal.....	DB35000S
Cardinal.....	DB50000S
Cardinal.....	DB75000S
Rice Lake Weighing Systems.....	RLDB50000S

Main Dimensions and Accessories



RATED CAPACITY	DIMENSIONS									
	A	B	C	D	E	F	G	H	I	
35K-75K	8.25	2.50	1.80	7.25	2.00	0.93	0.38	0.75	1/2-14NPT	

▶ **SPECIFICATIONS** ◀

Rated Output (mV/V)	2.00	Input Impedance	700 +/- 10 ohms
Nonlinearity	+/- 0.03% FS	Output Impedance	700 +/- 5 ohms
Hysteresis	+/- 0.02% FS	Insulation Resistance	5000 Megohms
Repeatability	+/- 0.01% FS	Excitation Voltage	10V AC/DC (20V Max)
Creep (30 minutes)	+/- 0.02% FS	Compensated Temperature Range	-10°C - +40°C
Zero Balance	+/- 1.00% FS	Operating Temperature Range	-20°C - +60°C
Temperature Effect on Zero	+/- 0.0027% of rated output/°C	Safe Overload	150% FS
Temperature Effect on Output	+/- 0.0015% of applied load/°C	Cable Length	50' Braided Shield Cable
Cable Color Code	Input                      Output	Seal Type	Welded-Seal, IP67
	Green +Excitation    White +Signal		
	Black -Excitation    Red -Signal		