

# CG-HMT

▶ SINGLE-ENDED BEAM

▶ STAINLESS STEEL

CENTRAL CAROLINA SCALE, INC 5393 FARRELL ROAD SANFORD NC 27330 (919) 776-7737



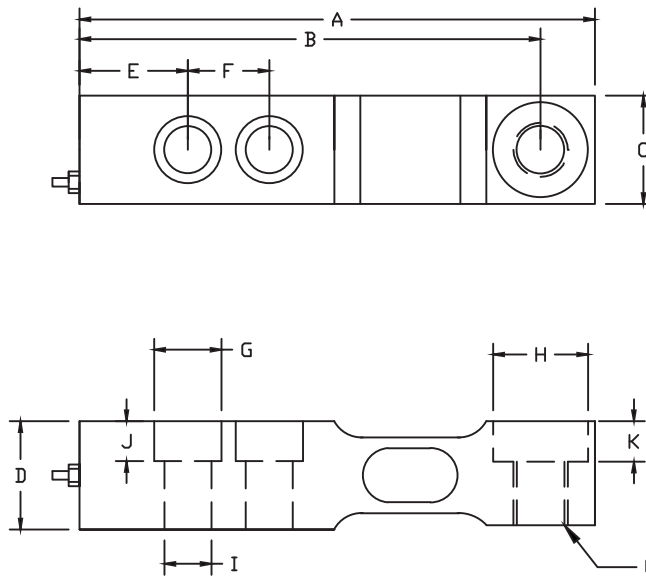
**CG-HMT ORDER INFORMATION** **PRICING** SUGGESTED LIST PRICE

250 Kg	\$ 375.00
500 Kg	\$ 375.00
1250 Kg	\$ 375.00

**INTERCHANGEABLE PRODUCTS**

Cardinal.....	LFB-500HMT 250Kg
Cardinal.....	LFB-1000HMT 500Kg
Cardinal.....	LFB-2500HMT 1250Kg

Main Dimensions and Accessories



RATED CAPACITY	DIMENSIONS												
	A	B	C	D	E	F	G	H	I	J	K	L	
250-1250KG	4.75	4.25	1.00	1.00	1.00	0.75	0.62	0.88	0.43	0.37	0.38	M12X1.75	

▶ SPECIFICATIONS ◀

Rated Output (mV/V)	2.00	Input Impedance	385 +/- 10 ohms
Nonlinearity	+/- 0.03% FS	Output Impedance	350 +/- 3 ohms
Hysteresis	+/- 0.03% FS	Insulation Resistance	5000 Megohms
Repeatability	+/- 0.01% FS	Excitation Voltage	10V AC/DC (20V Max)
Creep (30 minutes)	+/- 0.02% FS	Compensated Temperature Range	-10°C - +40°C
Zero Balance	+/- 1.00% FS	Operating Temperature Range	-20°C - +60°C
Temperature Effect on Zero	+/- 0.0027% of rated output/°C	Safe Overload	150% FS
Temperature Effect on Output	+/- 0.0015% of applied load/°C	Cable Length	20' Standard Cable
Cable Color Code		Seal Type	Environmentally-Sealed, IP67
Input	Output		
Green +Excitation	Red +Signal		
Black -Excitation	White -Signal		