

CG-LC22

▶ SINGLE-ENDED BEAM

▶ ALLOY STEEL

Welded Seal

NTEP 1:3000 Class III Single Cell

CENTRAL CAROLINA SCALE, INC 5393 FARRELL ROAD SANFORD NC 27330 (919) 776-7737



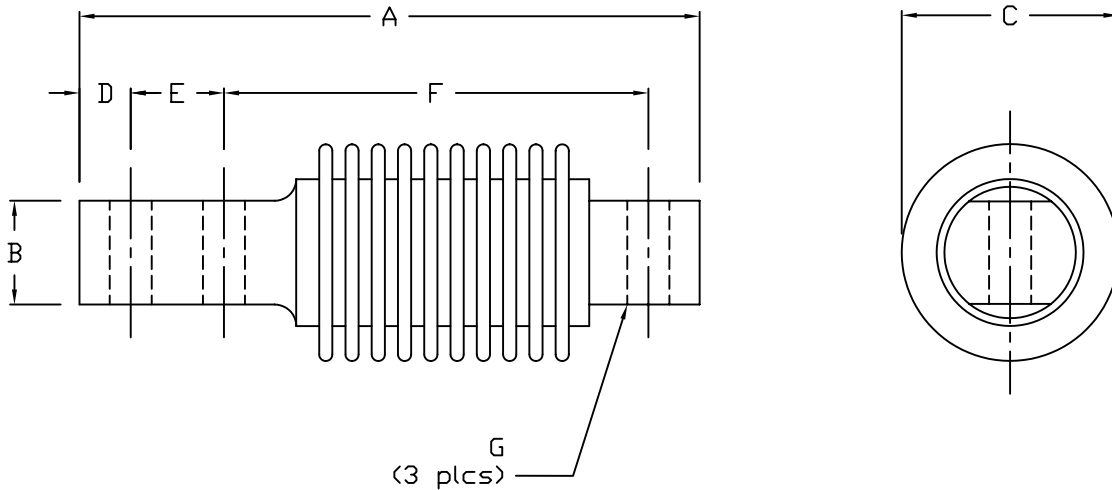
CG-LC22 ORDER INFORMATION PRICING^g SUGGESTED LIST PRICE

15 KG	\$330.00
30 KG	\$330.00
50 KG	\$330.00
75 KG	\$330.00
150 KG	\$330.00
250 KG	\$330.00
300 KG	\$330.00

INTERCHANGEABLE PRODUCTS

First Weigh LC22

Main Dimensions and Accessories



RATED CAPACITY	DIMENSIONS						
	A	B	C	D	E	F	G
15KG-300KG	5.37	0.90	2.00	0.60	0.98	3.25	0.51

→ SPECIFICATIONS ←

Rated Output (mV/V)	2.00	Input Impedance	385 +/- 10 ohms
Nonlinearity	+/- 0.03% FS	Output Impedance	350 +/- 3 ohms
Hysteresis	+/- 0.02% FS	Insulation Resistance	5000 Megohms
Repeatability	+/- 0.01% FS	Excitation Voltage	10V AC/DC (20V Max)
Creep (30 minutes)	+/- 0.02% FS	Compensated Temperature Range	-10°C - +40°C
Zero Balance	+/- 1.00% FS	Operating Temperature Range	-20°C - +60°C
Temperature Effect on Zero	+/- 0.0027% of rated output/°C	Safe Overload	150% FS
Temperature Effect on Output	+/- 0.0015% of applied load/°C	Cable Length	20' Standard Cable
Cable Color Code	Input Output	Seal Type	Welded-Seal, IP67
	Green +Excitation White +Signal		
	Black -Excitation Red -Signal		