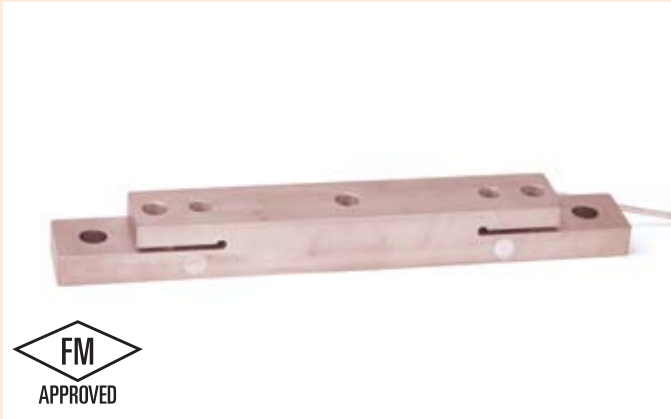


CG-Lodec

▶ DOUBLE-ENDED BEAM

▶ ALLOY STEEL

CENTRAL CAROLINA SCALE, INC 5393 FARRELL ROAD SANFORD NC 27330 (919) 776-7737



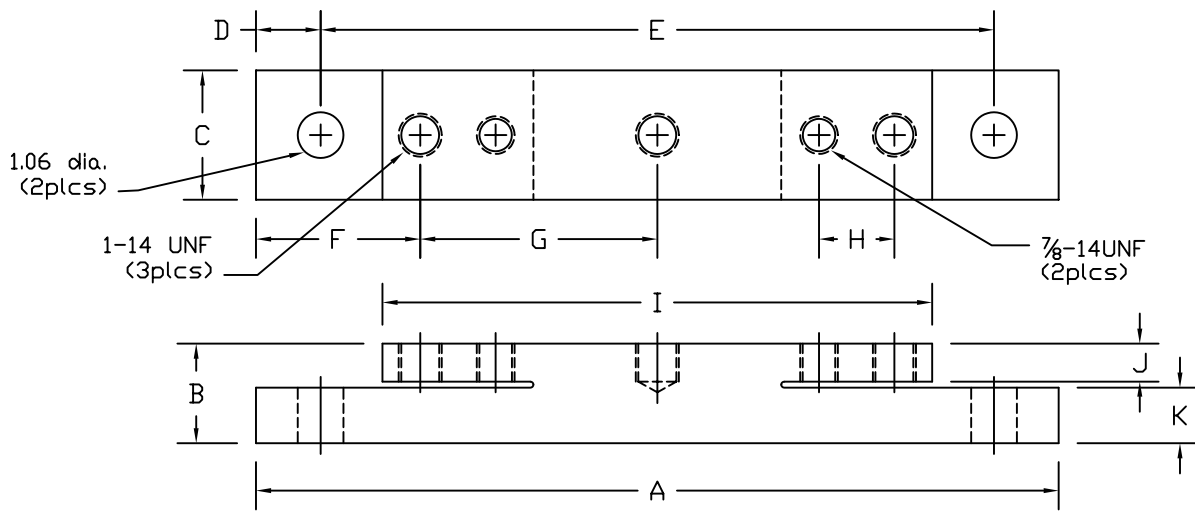
CG-Lodec ORDER INFORMATION PRICINGⁱⁱ SUGGESTED LIST PRICE

12.5K.....with 7pin male connector	\$ 695.00
12.5K.....with cable	\$ 695.00

INTERCHANGEABLE PRODUCTS

SI Lodec.....	Lodec
---------------	-------

Main Dimensions and Accessories



RATED CAPACITY	DIMENSIONS												
	A	B	C	D	E	F	G	H	I	J	K		
12.5K	22.62	2.31	3.00	1.50	19.62	3.81	7.50	1.75	16.75	0.88	1.29		

→ SPECIFICATIONS ←

Rated Output (mV/V)	0.50	Input Impedance	415 +/- 10 ohms
Nonlinearity	+/- 0.03% FS	Output Impedance	350 +/- 5 ohms
Hysteresis	+/- 0.02% FS	Insulation Resistance	5000 Megohms
Repeatability	+/- 0.01% FS	Excitation Voltage	10V AC/DC (20V Max)
Creep (30 minutes)	+/- 0.02% FS	Compensated Temperature Range	-10°C - +40°C
Zero Balance	+/- 1.00% FS	Operating Temperature Range	-20°C - +60°C
Temperature Effect on Zero	+/- 0.0027% of rated output/°C	Safe Overload	150% FS
Temperature Effect on Output	+/- 0.0015% of applied load/°C	Cable Length	50' Braided Shield Cable
Cable Color Code	Input Green +Excitation Black -Excitation	Output White +Signal Red -Signal	Seal Type Environmentally-Sealed, IP67

Pin Connector Code

Pin A.....	+ Signal
Pin B.....	Open
Pin C.....	- Excitation
Pin D.....	+ Excitation
Pin E.....	Open
Pin F.....	- Signal