

# CG-MK4

▶ SINGLE POINT

▶ STAINLESS STEEL

CENTRAL CAROLINA SCALE, INC 5393 FARRELL ROAD SANFORD NC 27330 (919) 776-7737



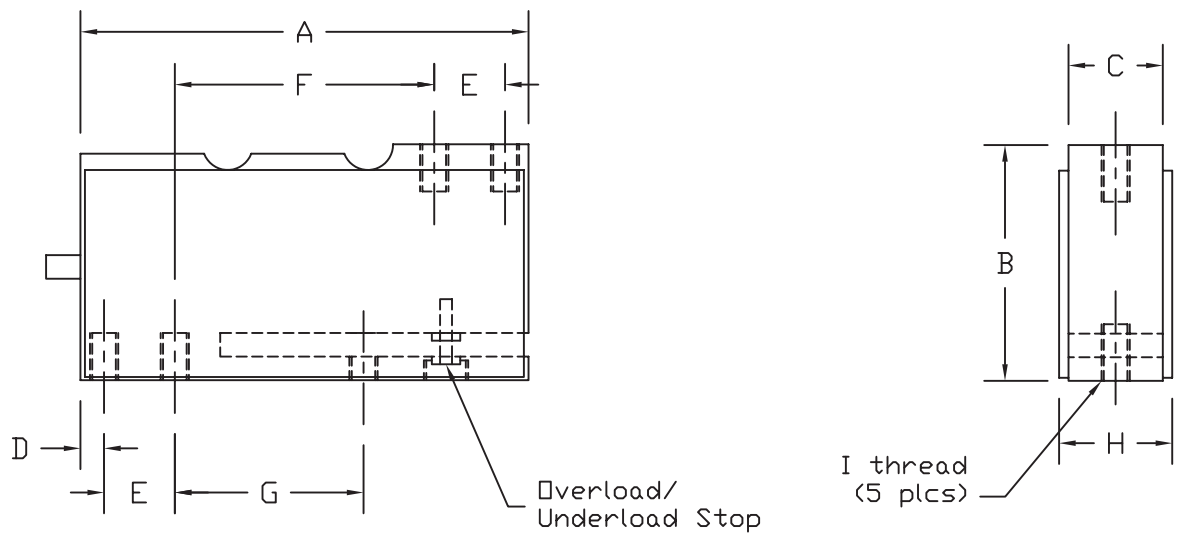
**CG-MK4 ORDER INFORMATION**      **PRICING<sup>ii</sup> SUGGESTED LIST PRICE**

10 lb	\$ 480.00
15 lb	\$ 480.00
25 lb	\$ 480.00
30 lb	\$ 480.00
50 lb	\$ 480.00
100 lb	\$ 480.00

**INTERCHANGEABLE PRODUCTS**

NCI .....	Mark IV
Weigh-Tronix .....	Mark IV
Artech .....	SS61010
Rice Lake Weighing Systems.....	RLMK4

Main Dimensions and Accessories



RATED CAPACITY	DIMENSIONS									
	A	B	C	D	E	F	G	H	I	
10lb-100lb	4.75	2.50	1.00	0.25	0.75	2.75	2.00	1.26	1/4-20UNCx0.50dp	

▶ SPECIFICATIONS ◀

Rated Output (mV/V)	2.00 +/- 10%	Input Impedance	385 +/- 10 ohms
Nonlinearity	+/- 0.03% FS	Output Impedance	350 +/- 3 ohms
Hysteresis	+/- 0.02% FS	Insulation Resistance	5000 Megohms
Repeatability	+/- 0.02% FS	Excitation Voltage	10V AC/DC (20V Max)
Creep (30 minutes)	+/- 0.03% FS	Compensated Temperature Range	-10°C - +40°C
Zero Balance	+/- 1.00% FS	Operating Temperature Range	-20°C - +60°C
Temperature Effect on Zero	+/- 0.002% of rated output/°C	Safe Overload	150% FS
Temperature Effect on Output	+/- 0.001% of applied load/°C	Cable Length	10' Standard Cable
Cable Color Code	Input Green +Excitation Black -Excitation	Output White +Signal Red -Signal	Seal Type Environmentally Sealed, Potted, IP67