

CG-SB2L

▶ SINGLE-ENDED BEAM

▶ ALLOY STEEL

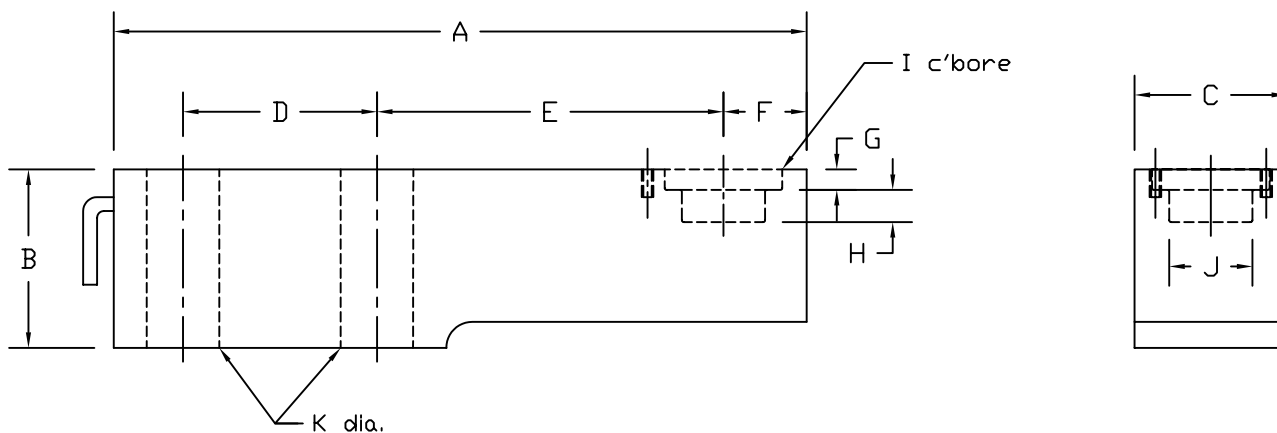
CENTRAL CAROLINA SCALE, INC 5393 FARRELL ROAD SANFORD NC 27330 (919) 776-7737



CG-SB2L ORDER INFORMATION		PRICING	SUGGESTED LIST PRICE
45K	350Ω		\$1584.00

INTERCHANGEABLE PRODUCTS	
Rice Lake Weighing Systems.....	RLSB2L
TotalComp.....	TBM4
Toledo	0743

Main Dimensions and Accessories



RATED CAPACITY	DIMENSIONS												
	A	B	C	D	E	F	G	H	I	J	K		
45K	12.50	3.25	2.75	3.50	6.25	1.50	0.38	0.56	2.00	1.50	1.31		

SPECIFICATIONS

Rated Output (mV/V)	2.00	Input Impedance	380 +/- 10 ohms
Nonlinearity	+/- 0.03% FS	Output Impedance	350 +/- 3 ohms
Hysteresis	+/- 0.03% FS	Insulation Resistance	5000 Megohms
Repeatability	+/- 0.01% FS	Excitation Voltage	10V AC/DC (20V Max)
Creep (30 minutes)	+/- 0.02% FS	Compensated Temperature Range	-10°C - +40°C
Zero Balance	+/- 1.00% FS	Operating Temperature Range	-20°C - +60°C
Temperature Effect on Zero	+/- 0.0027% of rated output/°C	Safe Overload	150% FS
Temperature Effect on Output	+/- 0.0015% of applied load/°C	Cable Length	50' Braided Shield Cable
Cable Color Code	Input Green +Excitation Black -Excitation	Output White +Signal Red -Signal	Seal Type Environmentally-Sealed, IP67