

CG-SB4

▶ SINGLE-ENDED BEAM

▶ STAINLESS STEEL
Welded-Seal

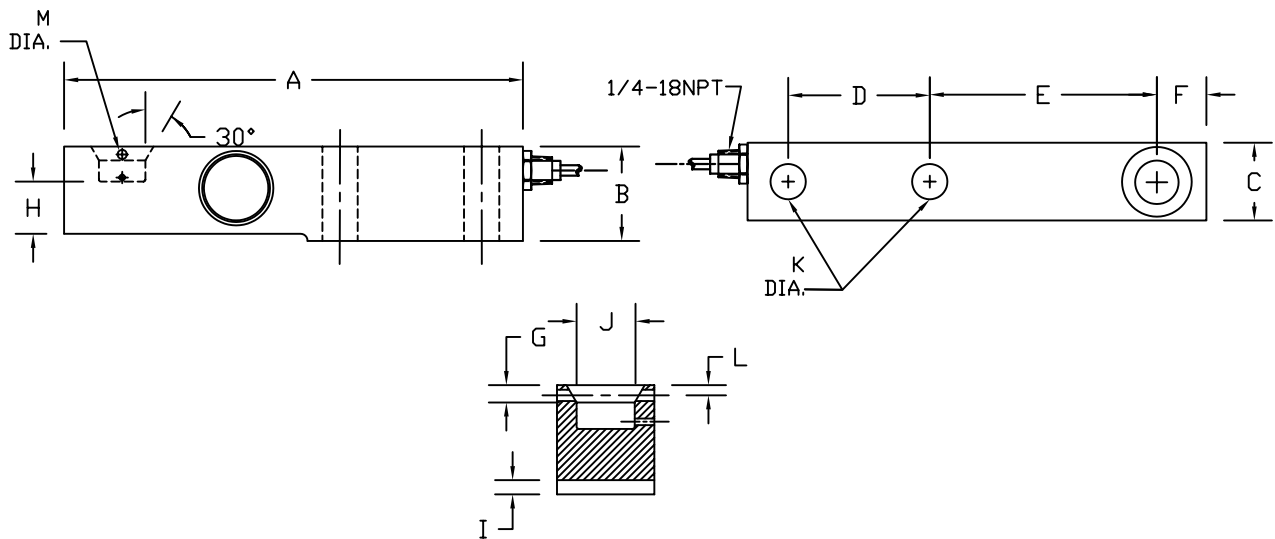
CENTRAL CAROLINA SCALE, INC 5393 FARRELL ROAD SANFORD NC 27330 (919) 776-7737



CG-SB4 ORDER INFORMATION	PRICING	SUGGESTED LIST PRICE
5KN, 10KN, 23KN		\$ 595.00
50KN		\$ 650.00

INTERCHANGEABLE PRODUCTS
Flintec..... SB4

Main Dimensions and Accessories



RATED CAPACITY	DIMENSIONS												
	A	B	C	D	E	F	G	H	I	J	K	L	M
5KN, 10KN, 23KN	6.10	1.41	1.18	1.37	3.14	0.59	0.27	0.82	0.23	0.70	0.51	0.15	0.15
50KN	7.50	1.93	1.69	1.57	4.13	0.82	0.23	1.12	0.31	0.98	0.82	0.31	0.15

SPECIFICATIONS

Rated Output (mV/V)	2.00	Input Impedance	1100 +/- 10 ohms
Nonlinearity	+/- 0.03% FS	Output Impedance	1000 +/- 5 ohms
Hysteresis	+/- 0.03% FS	Insulation Resistance	5000 Megohms
Repeatability	+/- 0.01% FS	Excitation Voltage	10V AC/DC (20V Max)
Creep (30 minutes)	+/- 0.02% FS	Compensated Temperature Range	-10°C - +40°C
Zero Balance	+/- 1.00% FS	Operating Temperature Range	-20°C - +60°C
Temperature Effect on Zero	+/- 0.0027% of rated output/°C	Safe Overload	150% FS
Temperature Effect on Output	+/- 0.0015% of applied load/°C	Cable Length	20' Standard Cable
Cable Color Code	Input	Output	Seal Type
	Green +Excitation	White +Signal	Welded-Seal, IP67
	Black -Excitation	Red -Signal	