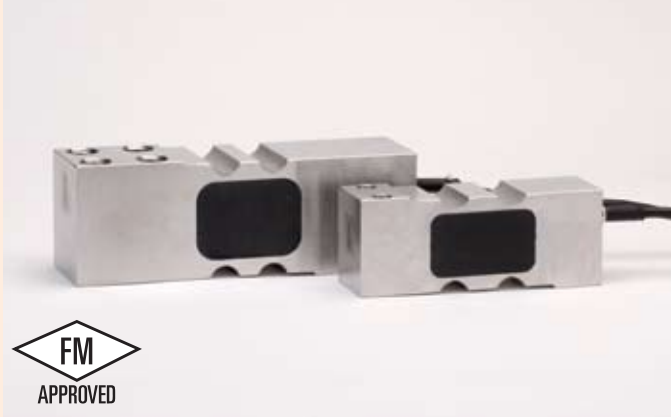


CG-SPLM

▶ SINGLE POINT

▶ Stainless Steel

CENTRAL CAROLINA SCALE, INC 5393 FARRELL ROAD SANFORD NC 27330 (919) 776-7737



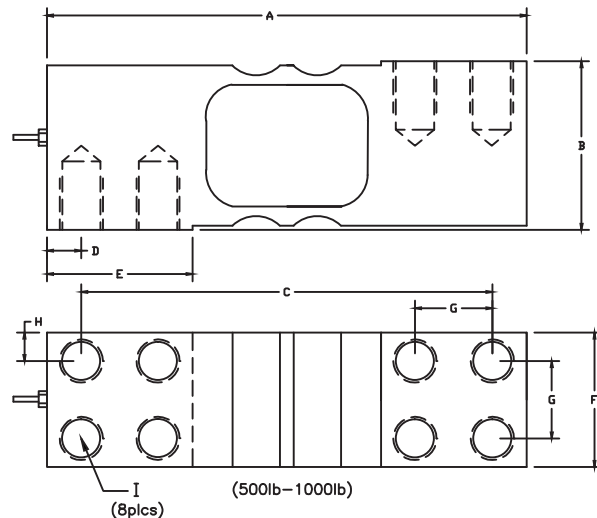
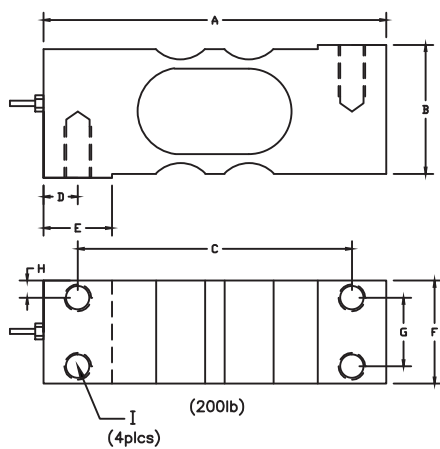
CG-SPLM ORDER INFORMATION PRICINGⁱⁱ SUGGESTED LIST PRICE

200 lb	\$ 580.00
500 lb	\$ 650.00
1000 lb	\$ 740.00

INTERCHANGEABLE PRODUCTS

Cardinal.....	SP-LM
---------------	-------

Main Dimensions and Accessories



RATED CAPACITY	DIMENSIONS								
	A	B	C	D	E	F	G	H	I
200lb	5.00	1.94	4.00	0.50	1.00	1.50	1.00	0.25	M10X1.5X0.75dp
500lb-1000lb	7.00	2.46	6.00	0.50	2.13	1.96	1.13	0.42	M16X2.0X0.75dp

→ SPECIFICATIONS ←

Rated Output (mV/V)	2.00 +/- 10%	Input Impedance	410 +/- 10 ohms
Nonlinearity	+/- 0.03% FS	Output Impedance	350 +/- 3 ohms
Hysteresis	+/- 0.02% FS	Insulation Resistance	5000 Megohms
Repeatability	+/- 0.02% FS	Excitation Voltage	10V AC/DC (20V Max)
Creep (30 minutes)	+/- 0.03% FS	Compensated Temperature Range	-10°C - +40°C
Zero Balance	+/- 1.00% FS	Operating Temperature Range	-20°C - +60°C
Temperature Effect on Zero	+/- 0.002% of rated output/°C	Safe Overload	150% FS
Temperature Effect on Output	+/- 0.001% of applied load/°C	Cable Length	10' Standard Cable
Cable Color Code	Input Output	Seal Type	Environmentally Sealed, Potted, IP67
	Green +Excitation Red +Signal	Max Platform Size:	600 X 600 mm
	Black -Excitation White -Signal		