

CG-SSB

▶ SINGLE-ENDED BEAM

▶ STAINLESS STEEL
NTEP 1:5000 Class III Multiple Cell

CENTRAL CAROLINA SCALE, INC 5393 FARRELL ROAD SANFORD NC 27330 (919) 776-7737



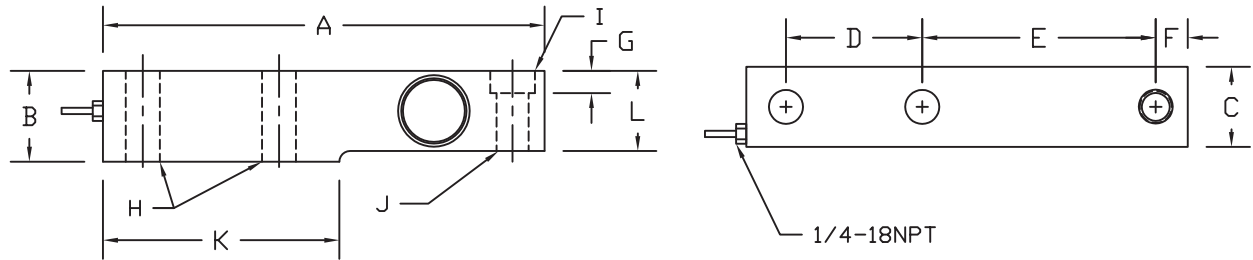
CG-SSB ORDER INFORMATION PRICING SUGGESTED LIST PRICE

1K	\$595.00
2K	\$595.00
5K	\$595.00
10K	\$705.00

INTERCHANGEABLE PRODUCTS

Rice Lake Weighing Systems.....	RLSSB
Revere.....	SSB
HBM.....	SB3
Artech.....	SS30610

Main Dimensions and Accessories



RATED CAPACITY	DIMENSIONS												
	A	B	C	D	E	F	G	H	I	J	K	L	
1K-5K	8.00	1.88	1.44	2.50	3.88	0.88	0.47	0.53	1.19	0.68	4.00	1.44	
10K	9.25	2.75	1.88	2.62	4.88	0.94	0.62	0.88	1.63	1.00	4.62	1.88	

▶ SPECIFICATIONS ◀

Rated Output (mV/V)	2.00	Input Impedance	385 +/- 10 ohms
Nonlinearity	+/- 0.03% FS	Output Impedance	350 +/- 3 ohms
Hysteresis	+/- 0.02% FS	Insulation Resistance	5000 Megohms
Repeatability	+/- 0.01% FS	Excitation Voltage	10V AC/DC (20V Max)
Creep (30 minutes)	+/- 0.02% FS	Compensated Temperature Range	-10°C - +40°C
Zero Balance	+/- 1.00% FS	Operating Temperature Range	-20°C - +60°C
Temperature Effect on Zero	+/- 0.0027% of rated output/°C	Safe Overload	150% FS
Temperature Effect on Output	+/- 0.0015% of applied load/°C	Cable Length	30' Standard Cable
Cable Color Code	Input Green +Excitation Black -Excitation	Output White +Signal Red -Signal	Seal Type Environmentally-Sealed, IP67