

CG-STR

▶ **DOUBLE-ENDED BEAM**

▶ **ALLOY STEEL**

NTEP 1:10,000 Class III Multiple Cell

CENTRAL CAROLINA SCALE, INC 5393 FARRELL ROAD SANFORD NC 27330 (919) 776-7737



CG-STR ORDER INFORMATION PRICING^g SUGGESTED LIST PRICE

40K	\$ 900.00
50K	\$ 900.00
* Load Buttons Included	

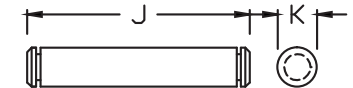
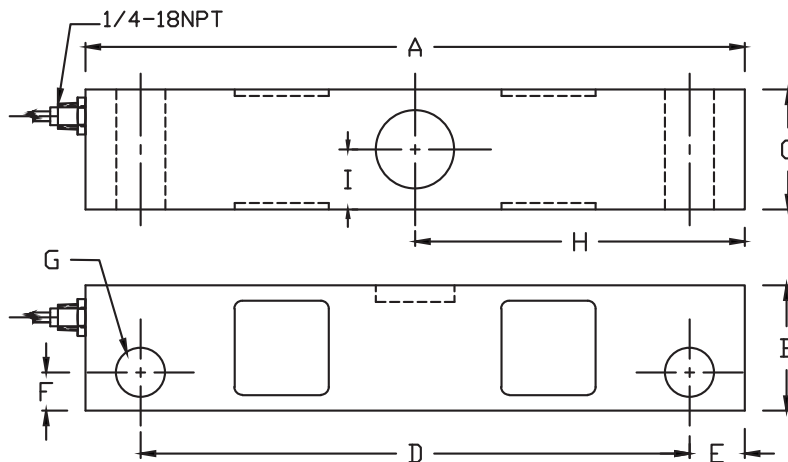
ACCESSORIES DISCOUNT G SUGGESTED LIST PRICE

600	Cell Support Pin	\$ 15.00
601	Retaining Ring for Support Pin	\$.50
602	Rocker Pin	\$ 37.50
603	Load Button	\$ 15.00
604	Load Button (Old Style) w/ Guide Pin	\$ 15.00
605	Upper Button Insert	\$ 12.00

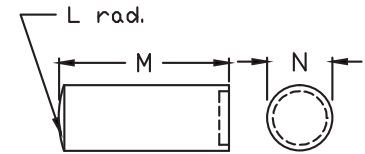
INTERCHANGEABLE PRODUCTS

Epelsa.....	STR
First Weigh.....	LC32

Main Dimensions and Accessories



#600 Support Pin



#602 Rocker Pin

RATED CAPACITY	DIMENSIONS														
	A	B	C	D	E	F	G	H	I	J	K	L	M	N	
40K-50K	10.50	2.00	1.91	8.75	0.88	0.61	0.78	5.25	0.95	-	-	-	-	-	
#600 Support Pin	-	-	-	-	-	-	-	-	-	4.25	0.75	-	-	-	
#602 Rocker Pin	-	-	-	-	-	-	-	-	-	-	-	12.00	3.25	1.25	

→ **SPECIFICATIONS** ←

Rated Output (mV/V)	3.00	Input Impedance	700 +/- 10 ohms
Nonlinearity	+/- 0.03% FS	Output Impedance	700 +/- 5 ohms
Hysteresis	+/- 0.02% FS	Insulation Resistance	5000 Megohms
Repeatability	+/- 0.01% FS	Excitation Voltage	10V AC/DC (20V Max)
Creep (30 minutes)	+/- 0.02% FS	Compensated Temperature Range	-10°C - +40°C
Zero Balance	+/- 1.00% FS	Operating Temperature Range	-20°C - +60°C
Temperature Effect on Zero	+/- 0.0027% of rated output/°C	Safe Overload	150% FS
Temperature Effect on Output	+/- 0.0015% of applied load/°C	Cable Length	60' Braided Shield Cable
Cable Color Code	Input Output	Seal Type	Environmentally-Sealed, IP67
	Green +Excitation White +Signal		
	Black -Excitation Red -Signal		