

CG-TB2

▶ SINGLE-ENDED BEAM

▶ STAINLESS STEEL

CENTRAL CAROLINA SCALE, INC 5393 FARRELL ROAD SANFORD NC 27330 (919) 776-7737



CG-TB2 ORDER INFORMATION

	PRICING ^g	SUGGESTED LIST PRICE
100 lb		\$ 544.50
200 lb		\$ 544.50
500 lb		\$ 544.50
1K		\$ 544.50
2K		\$ 544.50

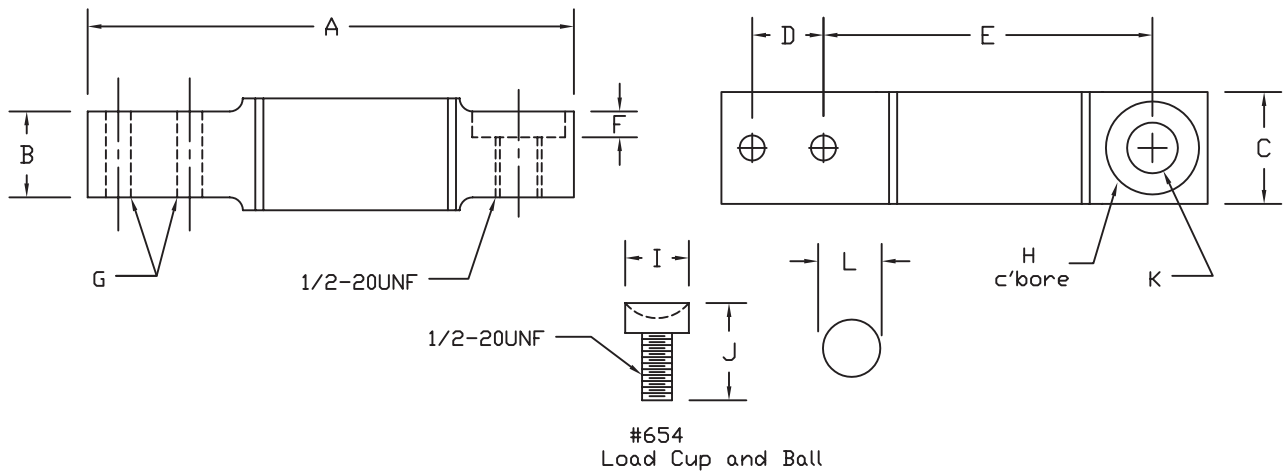
INTERCHANGEABLE PRODUCTS

Rice Lake.....	RL32155
Toledo.....	1110 Series, 1178 Series, 11785600A, 11785700A
Toledo.....	11786900A, 11788500A, 12744300B, 2095 Platform
Toledo.....	2155 Base, 2855 Base

ACCESSORIES

	DISCOUNT G	SUGGESTED LIST PRICE
Stock # 654	Bearing Cup and Ball	\$ 80.00

Main Dimensions and Accessories



RATED CAPACITY	DIMENSIONS													
	A	B	C	D	E	F	G	H	I	J	K	L		
100-200LB	5.37	1.38	1.75	1.00	3.63	-	0.53	-	-	-	0.19	-		
500LB-2K	6.12	1.38	1.75	1.00	4.00	0.69	0.53	1.09	-	-	0.50	-		
Load Cup	-	-	-	-	-	-	-	-	-	1.06	1.62	-	0.81	

SPECIFICATIONS

Rated Output (mV/V)	2.00	Input Impedance	480 +/- 10 ohms
Nonlinearity	+/- 0.03% FS	Output Impedance	440 +/- 3 ohms
Hysteresis	+/- 0.03% FS	Insulation Resistance	5000 Megohms
Repeatability	+/- 0.01% FS	Excitation Voltage	10V AC/DC (20V Max)
Creep (30 minutes)	+/- 0.02% FS	Compensated Temperature Range	-10°C - +40°C
Zero Balance	+/- 1.00% FS	Operating Temperature Range	-20°C - +60°C
Temperature Effect on Zero	+/- 0.0027% of rated output/°C	Safe Overload	150% FS
Temperature Effect on Output	+/- 0.0015% of applied load/°C	Cable Length	30' 6 Conductor Cable
Cable Color Code		Seal Type	Environmentally-Sealed, IP67
Input	Output	Sense Leads	
White +Excitation	Green +Signal	Yellow +Sense	
Blue -Excitation	Black -Signal	Red -Sense	