

CG-WBL-SS

▶ SINGLE-ENDED BEAM

▶ STAINLESS STEEL

Potted-Seal, IP67

NTEP 1:10,000 Class III Multiple Cell

CENTRAL CAROLINA SCALE, INC 5393 FARRELL ROAD SANFORD NC 27330 (919) 776-7737



CG-WBL-SS ORDER INFORMATION PRICING

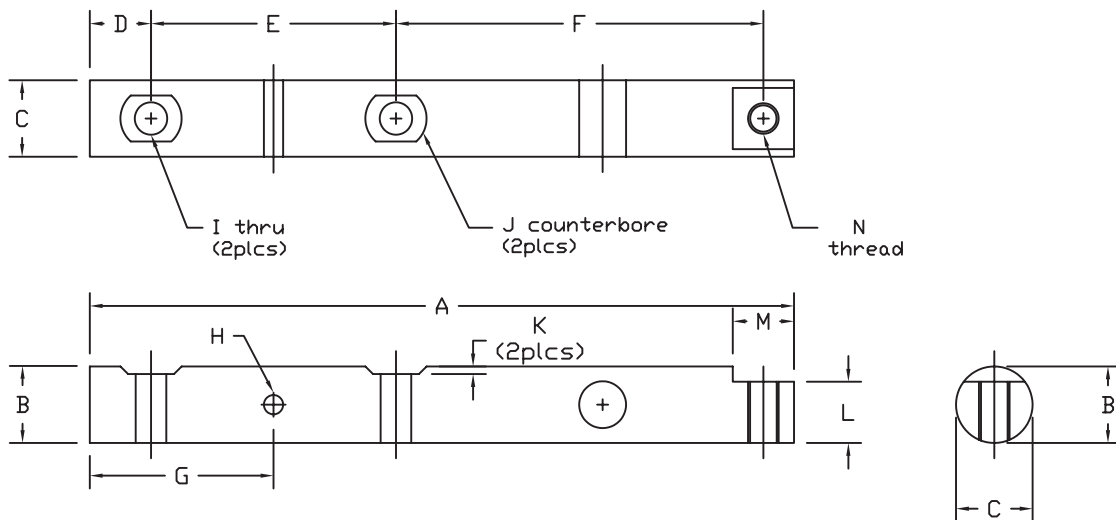
CG-WBL-SS	ORDER INFORMATION	PRICING	DISCOUNT
*CG-WBL-SS	1.25K		\$ 478.50
CG-WBL-SS	2.5K		\$ 478.50

*NON-NTEP

INTERCHANGEABLE PRODUCTS

Weigh-Tronix	1.25K	41035-1027
	1.25K	41035-0029
	2.5K	41036-1057
	5K	41037-1074

Main Dimensions and Accessories



RATED CAPACITY	DIMENSIONS														
	A	B	C	D	E	F	G	H	I	J	K	L	M	N	
1.25K	11.50	1.25	1.25	1.00	4.00	6.00	3.00	0.31	0.53	1.03	0.12	1.00	1.00	1/2-13UNC	
2.5K	11.50	1.62	1.62	1.03	4.00	6.00	3.03	0.38	0.66	1.25	0.12	1.18	1.50	5/8-11UNC	

SPECIFICATIONS

Rated Output (mV/V)	2.00	Input Impedance	385 +/- 10 ohms
Nonlinearity	+/- 0.03% FS	Output Impedance	350 +/- 3 ohms
Hysteresis	+/- 0.02% FS	Insulation Resistance	5000 Megohms
Repeatability	+/- 0.01% FS	Excitation Voltage	10V AC/DC (20V Max)
Creep (30 minutes)	+/- 0.02% FS	Compensated Temperature Range	-10°C - +40°C
Zero Balance	+/- 1.00% FS	Operating Temperature Range	-20°C - +60°C
Temperature Effect on Zero	+/- 0.0027% of rated output/°C	Safe Overload	150% FS
Temperature Effect on Output	+/- 0.0015% of applied load/°C	Cable Length	20' Standard Cable
Cable Color Code	Input	Output	Seal Type
	Green +Excitation	White +Signal	Environmentally-Sealed, IP67
	Black -Excitation	Red -Signal	