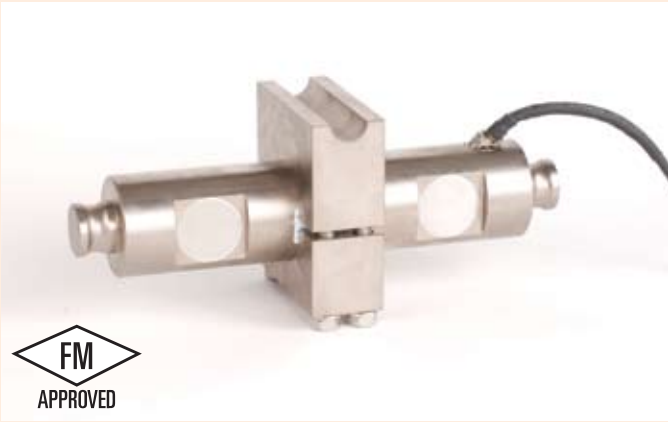


CG-WBM

▶ DOUBLE-ENDED BEAM

▶ ALLOY STEEL

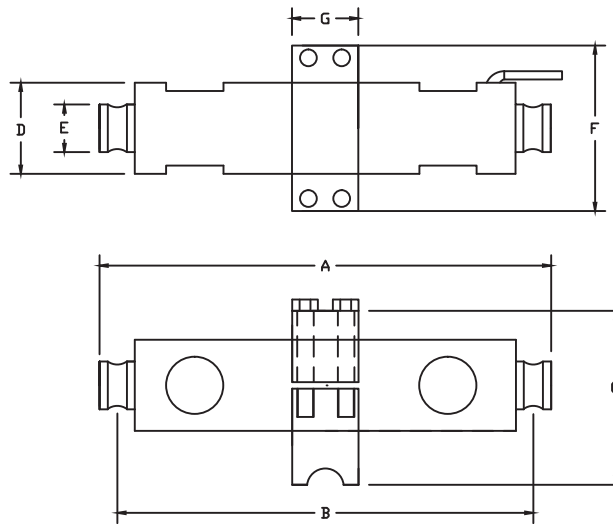
CENTRAL CAROLINA SCALE, INC 5393 FARRELL ROAD SANFORD NC 27330 (919) 776-7737



CG-WBM ORDER INFORMATION	PRICING	SUGGESTED LIST PRICE
37.5K		\$1,100.00
50K		\$1,100.00

INTERCHANGEABLE PRODUCTS	
Weigh-Tronix.....	WBM
Weigh-Tronix.....	18561-0029

Main Dimensions and Accessories



RATED CAPACITY	DIMENSIONS							
	A	B	C	D	E	F	G	
37.5K	13.625	12.55	5.25	2.75	1.44	5.00	2.00	
50K	13.125	11.97	5.25	3.00	1.50	6.00	2.50	

SPECIFICATIONS

Rated Output (mV/V)	3.00	Input Impedance	385 +/- 10 ohms
Nonlinearity	+/- 0.03% FS	Output Impedance	350 +/- 5 ohms
Hysteresis	+/- 0.02% FS	Insulation Resistance	5000 Megohms
Repeatability	+/- 0.01% FS	Excitation Voltage	10V AC/DC (20V Max)
Creep (30 minutes)	+/- 0.02% FS	Compensated Temperature Range	-10°C - +40°C
Zero Balance	+/- 1.00% FS	Operating Temperature Range	-20°C - +60°C
Temperature Effect on Zero	+/- 0.0027% of rated output/°C	Safe Overload	150% FS
Temperature Effect on Output	+/- 0.0015% of applied load/°C	Cable Length	50' Braided Shield Cable
Cable Color Code	Input	Output	Seal Type
	Green +Excitation	White +Signal	Environmentally-Sealed, IP67
	Black -Excitation	Red -Signal	