

# CG-Z6

▶ SINGLE-ENDED BEAM

▶ STAINLESS STEEL  
Welded Seal

CENTRAL CAROLINA SCALE, INC 5393 FARRELL ROAD SANFORD NC 27330 (919) 776-7737



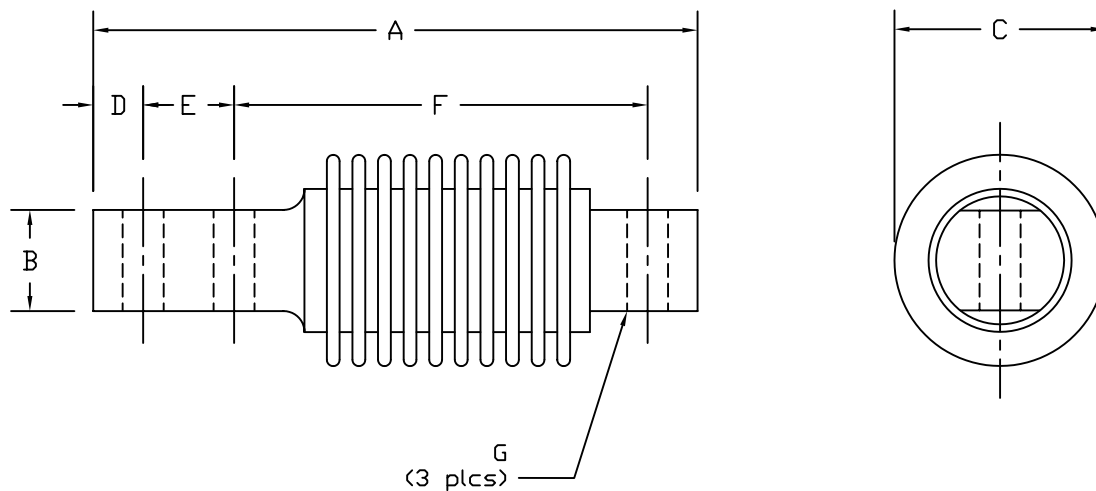
**CG-Z6 ORDER INFORMATION**      PRICING<sup>ii</sup> SUGGESTED LIST PRICE

5 KG	\$380.00
10 KG	\$380.00
20 KG	\$380.00
50 KG	\$380.00
100 KG	\$380.00
200 KG	\$380.00

**INTERCHANGEABLE PRODUCTS**

Cardinal.....	CB6
Rice Lake Weighing Systems.....	RLHBB
Celtron.....	HBB
Revere Transducers.....	SHB
Tedea Huntleigh.....	355
HBM.....	Z6
Totalcomp.....	TZ6
Toledo.....	MTB

Main Dimensions and Accessories



RATED CAPACITY	DIMENSIONS								
	A	B	C	D	E	F	G		
5KG-200KG	4.72	0.79	1.65	0.39	0.71	3.23	0.32		

▶ SPECIFICATIONS ◀

Rated Output (mV/V)	2.00	Input Impedance	380 +/- 10 ohms
Nonlinearity	+/- 0.03% FS	Output Impedance	350 +/- 3 ohms
Hysteresis	+/- 0.03% FS	Insulation Resistance	5000 Megohms
Repeatability	+/- 0.01% FS	Excitation Voltage	10V AC/DC (20V Max)
Creep (30 minutes)	+/- 0.02% FS	Compensated Temperature Range	-10°C - +40°C
Zero Balance	+/- 1.00% FS	Operating Temperature Range	-20°C - +60°C
Temperature Effect on Zero	+/- 0.0027% of rated output/°C	Safe Overload	150% FS
Temperature Effect on Output	+/- 0.0015% of applied load/°C	Cable Length	20' 6 Conductor Cable
Cable Color Code		Seal Type	Welded-Seal, IP67
Input	Output	Sense Leads	
Green +Excitation	White +Signal	Blue +Sense	
Black -Excitation	Red -Signal	Brown -Sense	