



## BM14A

- BM14A load cells are available in the capacities 10t~100t, 25Klb~200Klb
- Stainless steel construction, hermetically welded, oil proof, waterproof, anti-corrosive gas and medium sized. Lightning protected in all kinds of environments.
- Column structure, good self-aligning ability, suitable for electronic platform scales, automobile testing facilities, hopper scales and other electronic weighing devices

### Features

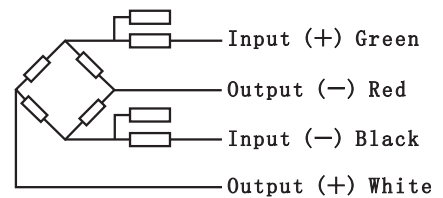
- Capacities: 10t~100t; 25Klb~200Klb
- High accuracy
- Easy installation and reliable performance
- Stainless steel construction
- Four column construction
- PTB Approval No.: D09-07.01

### Accessories

- BY-14-101



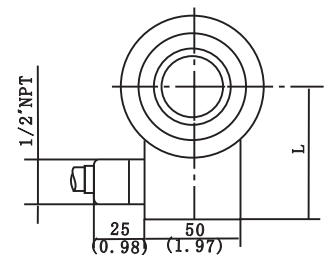
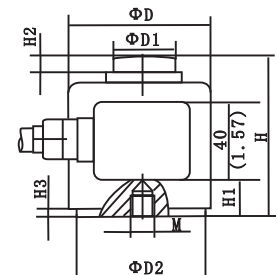
Specifications			
Capacity	t	10/25/40/60/100	
	Klb	25/50/100/200	
Accuracy		C3	N10 Equivalent
Approvals		OIML R60 C3	
Maximum Number of Verification Intervals	Nmax	3000	10000
Minimum Load Cell Verification Intervals	Vmin	Emax/10000	Emax/10000
Combined Error	(%FS)	±0.020	±0.020
Creep	(%FS/30min)	±0.016	±0.020
Temperature Effect on Sensitivity	(%FS/10°C)	±0.011	±0.014
Temperature Effect on Zero	(%FS/10°C)	±0.015	±0.017
Output Sensitivity	(mV/V)	2.0±0.002	
Input Resistance	(Ω)	450±4.5	
Output Resistance	(Ω)	480±4.8	
Insulation Resistance	(MΩ)	≥5000 (50VDC)	
Zero Balance	(%FS)	1.0	
Temperature, Compensated	(°C)	-10~+40	
Temperature, Operating	(°C)	-35~+70	
Excitation, Recommended	(V)	5~12 (DC)	
Excitation, Max	(V)	18 (DC)	
Safe Overload	(%FS)	150	
Ultimate Overload	(%FS)	300	



### Wiring:

Shielded 4 conductor cable: φ7.5mm  
Standard Cable Length: 10t: 10m;  
25t~100t: 20m

Outline Dimensions mm (inch)						
Dimension	10t, 25t	40t, 60t	100t	25Klb, 50Klb	100Klb	200Klb
Capacity						
D	73 (2.87)	105 (4.13)	151.4 (6.0)	73 (2.87)	105 (4.13)	151.4 (6.0)
D1	31.8 (1.25)	58.7 (2.31)	79.4 (3.13)	31.8 (1.25)	58.7 (2.31)	79.4 (3.13)
D2	58 (2.28)	82.5 (3.25)	123.8 (4.87)	58 (2.28)	82.5 (3.25)	123.8 (4.87)
H	82.5 (3.25)	127 (5.0)	184.2 (7.25)	82.5 (3.25)	127 (5.0)	184.2 (7.25)
H1	38.23 (1.5)	65.07 (2.56)	87.35 (3.44)	38.23 (1.5)	65.07 (2.56)	87.35 (3.44)
H2	7.75 (0.31)	9.4 (0.37)	23.15 (0.91)	7.75 (0.31)	9.4 (0.37)	23.15 (0.91)
H3	2.6 (0.10)	4 (0.16)	3.7 (0.15)	2.6 (0.10)	4 (0.16)	3.7 (0.15)
L	64 (2.52)	87 (3.43)	108.2 (4.26)	64 (2.52)	87 (3.43)	108.2 (4.26)
M	M12X1.75	M20x2.5	M20x2.5	1/2-20UNF	3/4-16UNF	3/4-16UNF



Part Number	Capacity	Ship Weight	Price
BM14A-C3-10t	10T stainless column type	7 lb	\$745
BM14A-C3-25t	25T stainless column type	9 lb	\$745
BM14A-C3-40t	40T stainless column type	18 lb	\$985
BM14A-C3-60t	60T stainless column type	18 lb	\$985
BM14A-C3-100t	100T stainless column type	37 lb	\$1,700
BM14A-N10-25K	25K stainless column type	7 lb	\$745
BM14A-N10-50K	50K stainless column type	9 lb	\$745
BM14A-N10-100K	100K stainless column type	18 lb	\$985
BM14A-N10-200K	200K stainless column type	37 lb	\$1,700

Compatible Products	
Manufacturer	Model
Revere	CAP
Sensortronics	65088-1000
Coti	CP26S5
Artech	90310
Rice Lake	RLCSP1
Totalcomp	TCSP1

Central Carolina Scale Inc  
919-776-7737



# BM14C

- BM14C load cells are available in the capacities 10t~50t
- Stainless steel construction, hermetically welded, oil proof, waterproof, anti-corrosive gas and medium sized making. Lightning protected in all kinds of environments.
- Column structure, anti-reversal design, good self-aligning ability, suitable for electronic platform scales, automobile testing facilities, hopper scales and other electronic weighing devices
- Safe and anti-explosive product, can be used in atrocious environments and hazardous areas

### Features

- Capacities: 10t~50t
- High accuracy
- Stainless steel construction
- Easy installation and reliable performance
- PTB Approval No.: D09-07.03 Revision 1

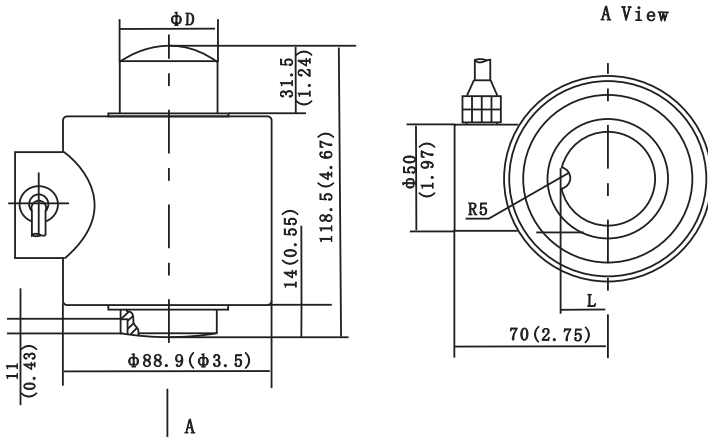
### Accessories

- BM-14-407
- BM-14-408
- BM-14-414
- HM-14-401
- HM-14-403
- HM-14-416

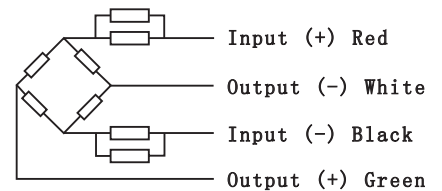


Load Cells

Specifications		
Capacity	t	10/20/25/30/40/50
Accuracy		C3
Approvals		OIML R60 C3
Maximum Number of Verification Intervals	Nmax	3000
Minimum Load Cell Verification Intervals	Vmin	E <sub>max</sub> /10000
Combined Error	(%FS)	≤±0.020
Creep	(%FS/30min)	≤±0.016
Temperature Effect on Sensitivity	(%FS/10°C)	≤±0.011
Temperature Effect on Zero	(%FS/10°C)	≤±0.015
Output Sensitivity	(mV/V)	2.0±0.002
Input Resistance	(Ω)	700±7
Output Resistance	(Ω)	703±4
Insulation Resistance	(MΩ)	≥5000 (50VDC)
Zero Balance	(%FS)	1.0
Temperature, Compensated	(°C)	-10~+40
Temperature, Operating	(°C)	-35~+70
Excitation, Recommended	(V)	5~12 (DC)
Excitation, Max	(V)	18 (DC)
Safe Overload	(%FS)	150
Ultimate Overload	(%FS)	300



Outline Dimensions mm (inch)		
Dimension	D	L
Capacity (kg)		
0.5t~30t	40 (1.57)	22 (0.87)
40t, 50t	50 (1.97)	27 (1.06)



### Wiring:

Shielded 4 conductor cable: φ5mm  
Standard Length: 15m and 18m

Part Number	Capacity	Ship Weight	Price
BM14C-C3-10t	10T stainless column type	13 lb	\$545
BM14C-C3-20t	20T stainless column type	13 lb	\$545
BM14C-C3-25t	25T stainless column type	13 lb	\$545
BM14C-C3-30t	30T stainless column type	13 lb	\$545
BM14C-C3-40t	40T stainless column type	13 lb	\$545
BM14C-C3-50t	50T stainless column type	13 lb	\$545



## HM14C

- HM14C load cells are available in the capacities 10t~50t
- Alloy steel construction, hermetically welded, oil proof, waterproof, anti-corrosive gas and medium sized. Lightning protected in all kinds of environments.
- Column structure, anti-reversal design, good self-aligning ability, suitable for electronic platform scales, automobile testing facilities, hopper scales and other electronic weighing devices

### Features

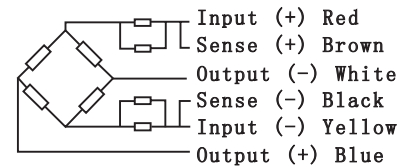
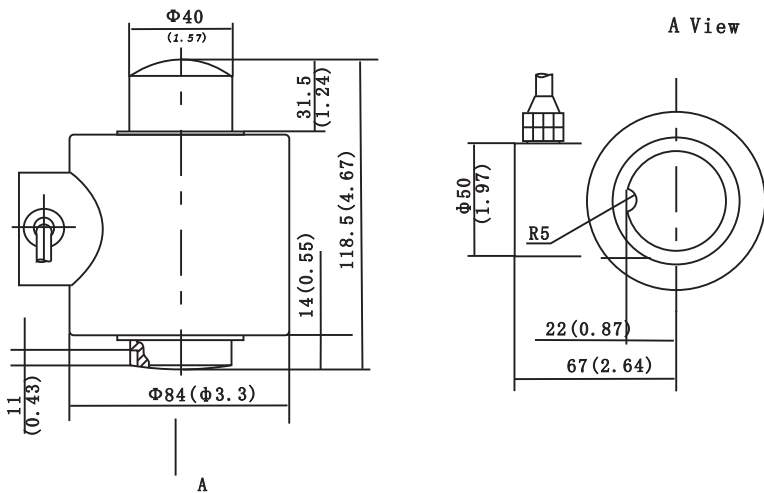
- Capacities: 10t~50t
- High accuracy
- Alloy steel construction
- Easy installation and reliable performance

### Accessories

- BM-14-407
- BM-14-408
- HM-14-401
- HM-14-403



Specifications		
Capacity	t	10/20/25/30/40/50
Accuracy		C3 Equivalent
Maximum Number of Verification Intervals	Nmax	3000
Minimum Load Cell Verification Intervals	Vmin	Emax/10000
Combined Error	(%FS)	±0.020
Creep	(%FS/30min)	±0.016
Temperature Effect on Sensitivity	(%FS/10°C)	±0.011
Temperature Effect on Zero	(%FS/10°C)	±0.015
Output Sensitivity	(mV/V)	2.0±0.004
Input Resistance	(Ω)	700±7
Output Resistance	(Ω)	703±4
Insulation Resistance	(MΩ)	≥5000 (50VDC)
Zero Balance	(%FS)	1.0
Temperature, Compensated	(°C)	-10~+40
Temperature, Operating	(°C)	-35~+70
Excitation, Recommended	(V)	5~12 (DC)
Excitation, Max	(V)	18 (DC)
Safe Overload	(%FS)	150
Ultimate Overload	(%FS)	300



### Wiring:

Shielded 6 conductor cable: φ6.3mm  
Standard Cable Length: 13m

Part Number	Capacity	Ship Weight	Price
HM14C-C3-10t	10T alloy column type	11 lb	\$505
HM14C-C3-20t	20T alloy column type	11 lb	\$505
HM14C-C3-30t	30T alloy column type	11 lb	\$505
HM14C-C3-40t	40T alloy column type	11 lb	\$505
HM14C-C3-50t	50T alloy column type	11 lb	\$535



## BM14D

- BM14D load cells are available in the capacities 10t~100t
- Stainless steel construction, hermetically welded, oil proof, waterproof, anti-corrosive gas and medium sized. Lightning protected in all kinds of environments.
- Column structure, anti-reversal design, good self-aligning ability, suitable for electronic platform scales, automobile testing facilities, hopper scales and other electronic weighing devices and force measuring fields

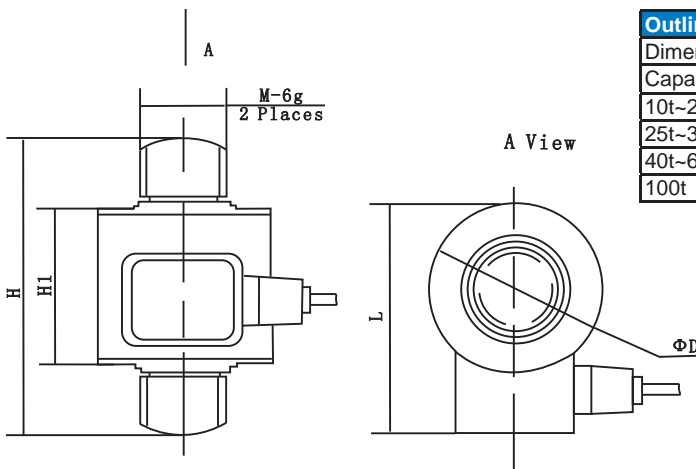
### Features

- Capacities: 10t~100t
- High accuracy
- Stainless steel construction
- Easy installation and reliable performance

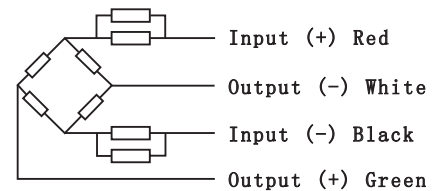


Load Cells

Specifications		
Capacity	t	10/20/25/30/40/50/100
Accuracy		C2 Equivalent
Maximum Number of Verification Intervals	Nmax	2000
Minimum Load Cell Verification Intervals	Vmin	Emax/5000
Combined Error	(%FS)	≤±0.030
Creep	(%FS/30min)	≤±0.024
Temperature Effect on Sensitivity	(%FS/10°C)	≤±0.017
Temperature Effect on Zero	(%FS/10°C)	≤±0.023
Output Sensitivity	(mV/V)	1.5±0.003
Input Resistance	(Ω)	700±7
Output Resistance	(Ω)	703±4
Insulation Resistance	(MΩ)	≥5000 (50VDC)
Zero Balance	(%FS)	1.0
Temperature, Compensated	(°C)	-10~+40
Temperature, Operating	(°C)	-35~+70
Excitation, Recommended	(V)	5~12 (DC)
Excitation, Max	(V)	18 (DC)
Safe Overload	(%FS)	150
Ultimate Overload	(%FS)	300



Outline Dimensions mm (inch)					
Dimension	H	H1	D	L	M
Capacity					
10t~20t	180 (7.08)	69.3 (2.73)	73 (2.87)	99.7 (3.92)	M36x3
25t~30t	200 (7.87)	70 (2.75)	88.9 (3.5)	115.6 (4.55)	M42x3
40t~60t	250 (9.84)	99.3 (3.91)	105 (4.13)	138.3 (5.44)	M56x4
100t	350 (13.7)	131.9 (5.19)	152.4 (4.93)	183.9 (7.14)	M76x4



### Wiring:

Shielded 4 conductor cable: φ5mm  
Standard Cable Length: 13m

Part Number	Capacity	Ship Weight	Price
BM14D-C2-10t	10T stainless column type	9 lb	\$1,860
BM14D-C2-20t	20T stainless column type	9 lb	\$1,860
BM14D-C2-25t	25T stainless column type	11 lb	\$2,415
BM14D-C2-30t	30T stainless column type	11 lb	\$2,415
BM14D-C2-40t	40T stainless column type	20 lb	\$3,360
BM14D-C2-50t	50T stainless column type	22 lb	\$3,360
BM14D-C2-100t	100T stainless column type	46 lb	\$5,485



## BM14G

- BM14G load cells are available in the capacities 10t~50t
- Stainless steel construction, hermetically welded, oil proof, waterproof, anti-corrosive gas and medium sized. Lightning protected in all kinds of environments.
- Column structure, anti-reversal design, good self-aligning ability, suitable for electronic platform scales, automobile testing facilities, hopper scales and other electronic weighing devices

### Features

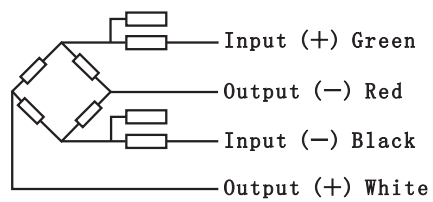
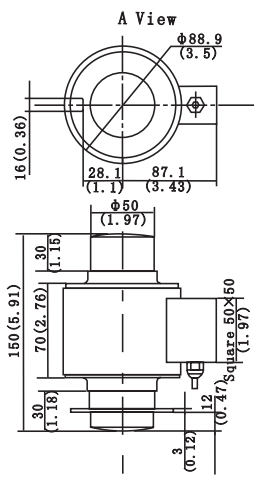
- Capacities: 10t~50t
- High accuracy
- Stainless steel construction
- Easy installation and reliable performance
- PTB Approval No.: D09-05.21 Revision 1
- NTEP Cert. No.: CC10-087

### Accessories

- BY-14-105
- BY-14-106
- BY-14-108



Specifications		
Capacity	t	10/20/30/40/50
Accuracy		C3
Approvals		OIML R60 C3
Maximum Number of Verification Intervals	Nmax	3000
Minimum Load Cell Verification Intervals	Vmin	Emax/10000
Combined Error	(%FS)	±0.020
Creep	(%FS/30min)	±0.016
Temperature Effect on Sensitivity	(%FS/10°C)	±0.011
Temperature Effect on Zero	(%FS/10°C)	±0.015
Output Sensitivity	(mV/V)	2.0±0.02
Input Resistance	(Ω)	700±7
Output Resistance	(Ω)	703±4
Insulation Resistance	(MΩ)	≥5000 (50VDC)
Zero Balance	(%FS)	1.0
Temperature, Compensated	(°C)	-10~+40
Temperature, Operating	(°C)	-35~+70
Excitation, Recommended	(V)	5~12 (DC)
Excitation, Max	(V)	18 (DC)
Safe Overload	(%FS)	150
Ultimate Overload	(%FS)	300



**Wiring:**  
Shielded 4 conductor cable: φ5mm  
Standard Cable Length

- Note:
- BM14G-XX-XX-XB type is not suitable for the following countries: UK, France, Germany, Italy, The Netherlands
  - Users can choose different structures of BM14G products, or contact Brecknell sales representatives for further products information.

Part Number	Capacity	Ship Weight	Price
BM14G-C3-10t	10T stainless column type	9 lb	\$585
BM14G-C3-20t	20T stainless column type	9 lb	\$585
BM14G-C3-30t	30T stainless column type	9 lb	\$585
BM14G-C3-40t	40T stainless column type	9 lb	\$585
BM14G-C3-50t	50T stainless column type	9 lb	\$585

Compatible Products	
Manufacturer	Model
Revere	ASC



## HM14H

- HM14H load cells are available in the capacities 10t~30t
- Alloy steel construction, hermetically welded, oil proof, waterproof, anti-corrosive gas and medium sized. Lightning protected in all kinds of environments.
- Column structure, anti-reversal design, good self-aligning ability, suitable for electronic platform scales, automobile testing facilities, hopper scales and other electronic weighing devices

### Features

- Capacities: 10t~30t
- High accuracy
- Alloy steel construction
- Easy installation and reliable performance

### Accessories

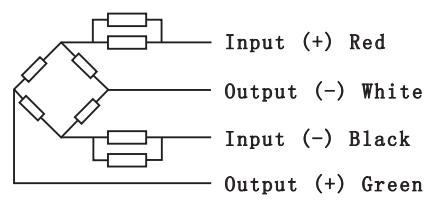
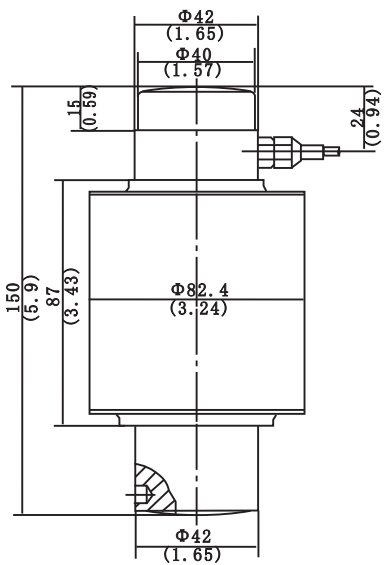
- HM-14-410



Load Cells

Specifications		
Capacity	t	10/20/30
Accuracy		C3 Equivalent
Maximum Number of Verification Intervals	Nmax	3000
Minimum Load Cell Verification Intervals	Vmin	E <sub>max</sub> /10000
Combined Error	(%FS)	≤±0.020
Creep	(%FS/30min)	≤±0.016
Temperature Effect on Sensitivity	(%FS/10°C)	≤±0.011
Temperature Effect on Zero	(%FS/10°C)	≤±0.015
Output Sensitivity	(mV/V)	2.0±0.002
Input Resistance	(Ω)	700±7
Output Resistance	(Ω)	703±4
Insulation Resistance	(MΩ)	≥5000 (50VDC)
Zero Balance	(%FS)	1.0
Temperature, Compensated	(°C)	-10~+40
Temperature, Operating	(°C)	-35~+70
Excitation, Recommended	(V)	5~12 (DC)
Excitation, Max	(V)	18 (DC)
Safe Overload	(%FS)	150
Ultimate Overload	(%FS)	300

10t, 20t, 30t



### Wiring:

Shielded 4 conductor cable:  $\phi 5\text{mm}$   
Standard Cable Length: 12m

Part Number	Capacity	Ship Weight	Price
HM14H-C3-10T	10T alloy steel column type		\$645
HM14H-C3-20T	20T alloy steel column type		\$645
HM14H-C3-30T	30T alloy steel column type		\$645



## BM14K

- BM14K load cells are available in the capacities 10t~100t
- Stainless steel construction, hermetically welded, oil proof, waterproof, anti-corrosive gas and medium sized. Lightning protected in all kinds of environments.
- Column structure, anti-reversal design, good self-aligning ability, suitable for electronic platform scales, automobile testing facilities, hopper scales and other electronic weighing devices

### Features

- Capacities: 10t~100t
- High accuracy
- Stainless steel construction
- Easy installation and reliable performance
- PTB Approval No.: D09-07.02
- NTEP Cert. No.: CC10-087

### Accessories

- BY-14-102
- BY-14-109



Specifications		
Capacity	t	10/15/20/30/40/50/60/100
Accuracy		C3
Approvals		OIML R60 C3
Maximum Number of Verification Intervals	Nmax	3000
Minimum Load Cell Verification Intervals	Vmin	Emax/10000
Combined Error	(%FS)	±0.020
Creep	(%FS/30min)	±0.016
Temperature Effect on Sensitivity	(%FS/10°C)	±0.011
Temperature Effect on Zero	(%FS/10°C)	±0.015
Output Sensitivity	(mV/V)	2.0±0.02
Input Resistance	(Ω)	700±7
Output Resistance	(Ω)	703±4
Insulation Resistance	(MΩ)	≥5000 (50VDC)
Zero Balance	(%FS)	1.0
Temperature, Compensated	(°C)	-10~+40
Temperature, Operating	(°C)	-35~+70
Excitation, Recommended	(V)	5~12 (DC)
Excitation, Max	(V)	18 (DC)
Safe Overload	(%FS)	150
Ultimate Overload	(%FS)	300

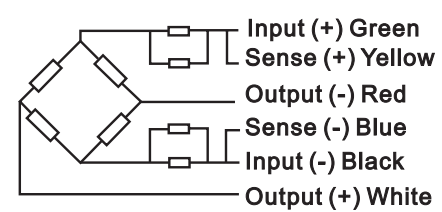
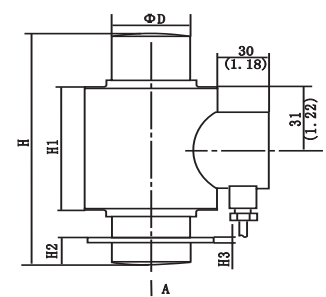
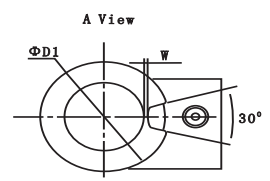
Outline Dimensions mm (inch)						
Dimension	H	H1	H2	H3	D	D1
Capacity						
10t, 15t	130 (5.12)	80 (3.46)	12 (0.47)	3 (0.12)	44 (1.73)	74 (2.91)
20t~40t	150 (5.91)	92 (3.62)	19 (0.75)	5 (0.2)	44 (1.73)	74 (2.91)
50t, 60t	210 (8.27)	92 (3.62)	19 (0.75)	5 (0.2)	44 (1.73)	74 (2.91)
100t	260 (10.24)	121 (4.76)	19 (0.75)	5 (0.2)	64 (2.52)	93 (3.66)

Part Number	Capacity	Ship Weight	Price
BM14K-C3-10t	10T stainless column type	11 lb	\$785
BM14K-C3-15t	15T stainless column type	11 lb	\$785
BM14K-C3-20t	20T stainless column type	11 lb	\$825
BM14K-C3-30t	30T stainless column type	11 lb	\$825
BM14K-C3-40t	40T stainless column type	11 lb	\$865
BM14K-C3-50t	50T stainless column type	11 lb	\$940
BM14K-C3-60t	60T stainless column type	15 lb	\$940
BM14K-C3-100t	100T stainless column type	22 lb	\$1,410

Compatible Products	
Manufacturer	Model
HBM	C16
Coti	CP26S4

Note:

- BM14K-XX-XX-XB type is not suitable for the following countries: UK, France, Germany, Italy, The Netherlands
- Users can choose different structures of BM14K products, or contact Brecknell sales representatives for further products information



**Wiring:**  
Shielded 6 conductor cable: φ5.0mm  
Standard Cable Length: 10t~20t: 12m; 40t~100t: 20m