



## H3

- H3 load cells are available in the capacities 25kg~30t and 100lb~20Klb
- Alloy steel, sealed by adhesive inside, oil-proof, waterproof and anti-corrosion, suitable for all kinds of environments
- S beam design, tension and/or compression loading possible, easy installation, suitable for crane scale, mechanical conversion scale, hopper scale and other electronic weighing devices
- Safe and anti-explosive product, can be used in atrocious environments and hazardous areas

### Features

- Capacity: 25kg~30t; 100lb~20Klb
- High accuracy
- Alloy steel construction
- Low profile

### Accessory

- OIML Cert. No.: R60/2000-CN-00.01
- PTB Approval No: D09-03.18 Revision 2
- NTEP Cert. No.: CC06-099A1
- HL-3-001
- HL-3-002
- HL-3-003
- HL-3-004
- HL-3-005



Specifications			
Capacity	t	25kg/50kg/100kg/150kg/200kg/250kg/300kg/500kg/600kg/750kg/1t/1.5t/2t/2.5t/3t/5t/7.5t/10t/15t/20t/30t	
	lb	100/150/200/250/300/500/750/1K/1.5K/2K/2.5K/3K/5K/10K/15K/20K	
Accuracy		C3	N10
Approvals		OIML R60 C3	
Maximum Number of Verification Intervals	Nmax	3000	10000
Minimum Load Cell Verification Intervals	Vmin	Emax/10000	Emax/10000
Combined Error	(%FS)	±0.020	±0.20
Creep	(%FS/30min)	±0.016	±0.020
Temperature Effect on Sensitivity	(%FS/10°C)	±0.011	±0.014
Temperature Effect on Zero	(%FS/10°C)	±0.015	±0.017
Output Sensitivity	(mV/V)	2.0±0.004 (Metric)	3.0±0.008 (Imperial)
Input Resistance	(Ω)	350±3.5	
Output Resistance	(Ω)	351±2.0	
Insulation Resistance	(MΩ)	≥5000 (50VDC)	
Zero Balance	(%FS)	1.5 (Metric)	1.0 (Imperial)
Temperature, Compensated	(°C)	-10~+40	
Temperature, Operating	(°C)	-35~+70	
Excitation, Recommended	(V)	5~12 (DC)	
Excitation, Max	(V)	18 (DC)	
Safe Overload	(%FS)	150	
Ultimate Overload	(%FS)	300	

Outline Dimensions mm (inch)						
Dimension (mm)	H	L	W1	W	M	H1±0.4
Capacity (t)						
25kg~50kg	76.2 (3.0)	50.8 (2.0)	12.7 (0.5)	16.1 (0.63)	M8	15.7 (0.62)
0.1t~0.15t	76.2 (3.0)	50.8 (2.0)	19.0 (0.75)	22.4 (0.88)	M10x1.5	15.3 (0.60)
0.2t~0.75t	76.2 (3.0)	50.8 (2.0)	19.0 (0.75)	22.4 (0.88)	M10x1.5	15.3 (0.60)
1t~1.5t	76.2 (3.0)	50.8 (2.0)	25.4 (1.0)	28.8 (1.13)	M12x1.75	12.1 (0.18)
2t~5t	101.6 (4.0)	76.2 (3.0)	25.4 (1.0)	28.8 (1.13)	M20x1.5	20 (0.79)
7.5t~10t	175 (6.89)	125 (4.92)	50 (1.97)	-	M33x3	40.2 (1.58)
15t~20t	200 (7.89)	160 (6.3)	60 (2.36)	-	M42x3	51 (2.01)
30t	230 (9.06)	190 (7.48)	80 (3.15)	-	M42x3	57.5 (2.26)
100lb~300lb	63.5 (2.5)	50.8 (2.0)	12.7 (0.5)	15.9 (0.63)	1/4-28UNF	10.16 (0.4)
500lb	63.5 (2.5)	50.8 (2.0)	19.05 (0.75)	22.25 (0.88)	1/2-20UNF	
0.75Klb~1.5Klb	63.5 (2.5)	50.8 (2.0)	19.05 (0.75)	22.25 (0.88)	1/2-20UNF	
2Klb~2.5Klb	63.5 (2.5)	50.8 (2.0)	25.4 (1.0)	28.6 (1.13)	1/2-20UNF	
3Klb	101.6 (4.0)	76.2 (3.0)	25.4 (1.0)	28.6 (1.13)	1/2-20UNF	15.24 (0.06)
5Klb~10Klb	101.6 (4.0)	76.2 (3.0)	25.4 (1.0)	28.6 (1.13)	3/4-16UNF	15.24 (0.06)
15Klb	139.7 (5.5)	101.6 (4.0)	31.75 (1.25)	34.95 (1.38)	1-14UNS	31 (1.22)
20Klb	177.8 (7.0)	127 (5.0)	50.8 (2.0)	54 (2.13)	1 1/4-12UNF	39.9 (1.57)

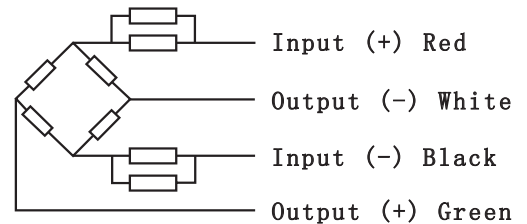
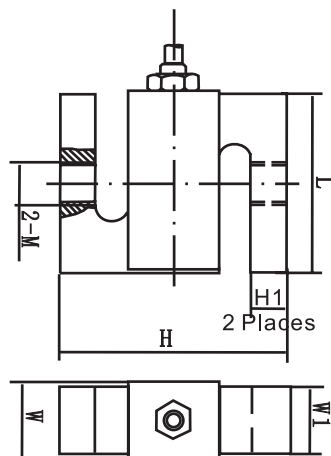
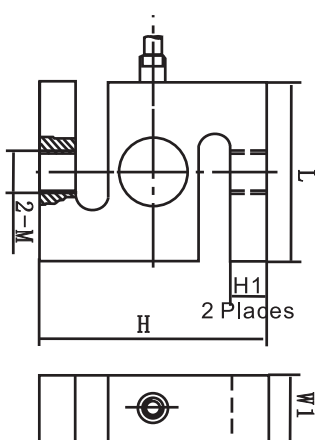


Part Number	Capacity	Ship Weight	Price
H3-C3-25KG-3B	25KG alloy "S" beam metric	2 lb	\$235
H3-C3-50KG-3B	50KG alloy "S" beam metric	2 lb	\$235
H3-C3-100KG-3B	100KG alloy "S" beam metric	2 lb	\$235
H3-C3-150KG-3B	150KG alloy "S" beam metric	2 lb	\$235
H3-C3-200KG-3B	200KG alloy "S" beam metric	2 lb	\$235
H3-C3-250KG-3B	250KG alloy "S" beam metric	2 lb	\$235
H3-C3-300KG-3B	300KG alloy "S" beam metric	2 lb	\$235
H3-C3-500KG-3B	500KG alloy "S" beam metric	2 lb	\$235
H3-C3-600KG-3B	600KG alloy "S" beam metric	2 lb	\$235
H3-C3-750KG-3B	750KG alloy "S" beam metric	2 lb	\$235
H3-C3-1.0t-3B	1T alloy "S" beam metric	2 lb	\$265
H3-C3-1.5t-3B	1.5T alloy "S" beam metric	2 lb	\$265
H3-C3-2.0t-6B	2T alloy "S" beam metric	4 lb	\$305
H3-C3-2.5t-6B	2.5T alloy "S" beam metric	4 lb	\$305
H3-C3-3.0t-6B	3T alloy "S" beam metric	4 lb	\$305
H3-C3-5.0t-6B	5T alloy "S" beam metric	4 lb	\$305
H3-C3-7.5t-6B	7.5T alloy "S" beam metric	15 lb	\$465
H3-C3-10t-6B	10T alloy "S" beam metric	15 lb	\$465
H3-C3-15t-6B	15T alloy "S" beam metric	29 lb	\$599
H3-C3-20t-6B	20T alloy "S" beam metric	29 lb	\$599
H3-C3-30t-6B	30T alloy "S" beam metric	53 lb	\$1,935
H3-N10-100-6YB	100LB alloy "S" beam imperial	2 lb	\$250
H3-N10-150-6YB	150LB alloy "S" beam imperial	2 lb	\$250
H3-N10-200-6YB	200LB alloy "S" beam imperial	2 lb	\$250
H3-N10-250-6YB	250LB alloy "S" beam imperial	2 lb	\$250
H3-N10-300-6YB	300LB alloy "S" beam imperial	2 lb	\$250
H3-N10-500-6YB	500LB alloy "S" beam imperial	2 lb	\$250
H3-N10-750-6YB	750LB alloy "S" beam imperial	2 lb	\$250
H3-N10-1K-6YB	1K alloy "S" beam imperial	2 lb	\$250
H3-N10-1.5K-6YB	1.5K alloy "S" beam imperial	2 lb	\$250
H3-N10-2.0K-6YB	2K alloy "S" beam imperial	2 lb	\$265
H3-N10-2.5K-6YB	2.5K alloy "S" beam imperial	2 lb	\$265
H3-N10-3K-6YB	3K alloy "S" beam imperial	4 lb	\$265
H3-N10-5K-6YB	5K alloy "S" beam imperial	4 lb	\$305
H3-N10-10K-6YB	10K alloy "S" beam imperial	4 lb	\$305
H3-N10-15K-6YB	15K alloy "S" beam imperial	15 lb	\$465
H3-N10-20K-6YB	20K alloy "S" beam imperial	15 lb	\$465

Compatible Products	
Manufacturer	Model
Celtron	STC
Sensortronics	60001-0221 Compact
Coti	CISB

7.5t-30t

25kg-5t 0.1-20klb



**Wiring:**  
 Shielded 4 conductor cable:  $\Phi$ 5mm  
 Standard Cable Length: 3m (0.5t~0.75t),  
 6m (1t~30t), (0.1l;b~20klb)



## H3F

- H3F load cells are available in the capacities 0.1t~5t and 250lb~20Klb
- Alloy steel, sealed by adhesive inside, oil-proof, waterproof and anti-corrosion, suitable for all kinds of environments.
- S beam design, tension and/or compression loading possible, easy installation, suitable for crane scale, mechanical conversion scale, hopper scale and other electronic weighing devices
- Safe and anti-explosive product, can be used in atrocious environments and hazardous areas.

### Features

- Capacities: 0.1t~5t; 250lb~20Klb
- High accuracy
- Alloy steel construction
- Low profile
- NTEP Cert. No.: CC06-099A1

### Accessory

- HL-3-001
- HL-3-002
- HL-3-003
- HL-3-004
- HL-3-005

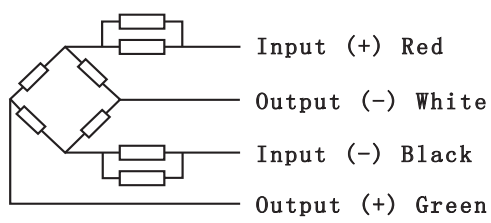
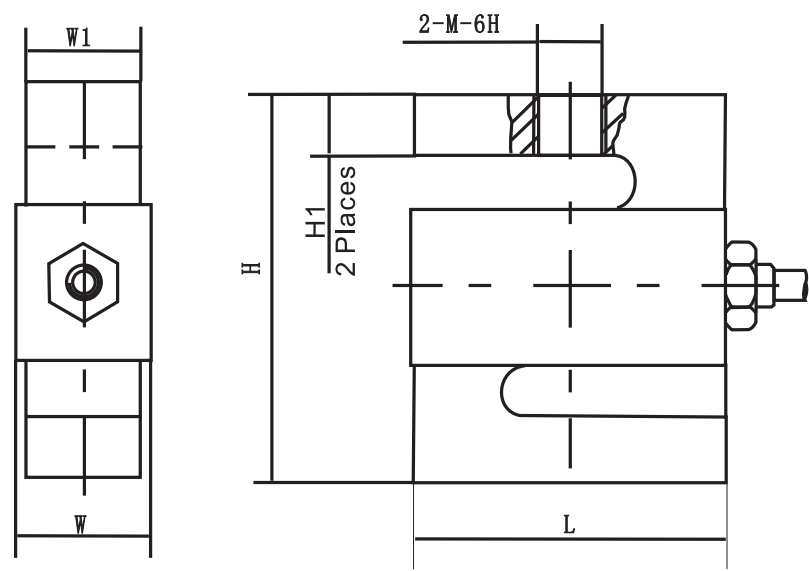


Specifications			
Capacity	t	100kg/250kg/500kg/750kg/1t/1.5t/2t/2.5t/5t	
	lb	250/500/750/1K/1.5K/2K/2.5K/3K/5K/7.5K/10K/15K/20K	
Accuracy		C3	N5
Maximum Number of Verification Intervals	Nmax	3000	5000
Minimum Load Cell Verification Intervals	Vmin	E <sub>max</sub> /5000	E <sub>max</sub> /5000
Combined Error	(%FS)	≤±0.020	≤±0.020
Creep	(%FS/30min)	≤±0.016	≤±0.020
Temperature Effect on Sensitivity	(%FS/10°C)	≤±0.011	≤±0.017
Temperature Effect on Zero	(%FS/10°C)	≤±0.015	≤±0.020
Output Sensitivity	(mV/V)	3.0±0.008	
Input Resistance	(Ω)	350±3.5	
Output Resistance	(Ω)	351±2.0	
Insulation Resistance	(MΩ)	≥5000 (50VDC)	
Zero Balance	(%FS)	1.0	
Temperature, Compensated	(°C)	-10~+40	
Temperature, Operating	(°C)	-35~+70	
Excitation, Recommended	(V)	5~12 (DC)	
Excitation, Max	(V)	18 (DC)	
Safe Overload	(%FS)	150	
Ultimate Overload	(%FS)	300	

Part Number	Capacity	Ship Weight	Price
H3FC3-100KG-6T	100KG alloy "S" beam metric	2 lb	\$250
H3FC3-250KG-6T	250KG alloy "S" beam metric	2 lb	\$250
H3FC3-500KG-6T	500KG alloy "S" beam metric	2 lb	\$250
H3FC3-750KG-6T	750KG alloy "S" beam metric	2 lb	\$250
H3FC3-1.0t-6T	1T alloy "S" beam metric	4 lb	\$265
H3FC3-1.5t-6T	1.5T alloy "S" beam metric	4 lb	\$265
H3FC3-2.0t-6T	2T alloy "S" beam metric	4 lb	\$305
H3FC3-2.5t-6T	2.5T alloy "S" beam metric	4 lb	\$305
H3FC3-5.0t-6T	5.0T alloy "S" beam metric	4 lb	\$305
H3F-N5-250-6YT	250LB alloy "S" beam imperial	2 lb	\$250
H3F-N5-500-6YT	500LB alloy "S" beam imperial	2 lb	\$250
H3F-N5-750-6YT	750LB alloy "S" beam imperial	2 lb	\$250
H3F-N5-1K-6YT	1K alloy "S" beam imperial	2 lb	\$250
H3F-N5-1.5K-6YT	1.5K alloy "S" beam imperial	2 lb	\$250
H3F-N5-2K-6YT	2K alloy "S" beam imperial	4 lb	\$265
H3F-N5-2.5K-6YT	2.5K alloy "S" beam imperial	4 lb	\$265
H3F-N5-3K-6YT	3K alloy "S" beam imperial	4 lb	\$265
H3F-N5-5K-6YT	5K alloy "S" beam imperial	4 lb	\$305
H3F-N5-7.5K-6YT	7.5K alloy "S" beam imperial	4 lb	\$305
H3F-N5-10K-6YT	10K alloy "S" beam imperial	4 lb	\$305
H3F-N5-15K-6YT	15K alloy "S" beam imperial	7 lb	\$465
H3F-N5-20K-6YT	20K alloy "S" beam imperial	7 lb	\$465

Compatible Products	
Manufacturer	Model
Celtron	STC
Sensortronics	60001,60036,RT1363
Cotu	CISB
Transcell	BSS

Outline Dimensions mm (inch)						
Dimension (mm)	H	W	W1	L	H1	M
Capacity						
100kg	76.2 (3)	25.4 (1.0)	19 (0.75)	50.8 (2)	15.8 (0.62)	M10x1.5
250kg	76.2 (3)	25.4 (1.0)	19 (0.75)	20.8 (2)	15.12 (0.6)	M12x1.75
500kg	76.2 (3)	25.4 (1.0)	19 (0.75)	50.8 (2)	14.2 (0.56)	M12x1.75
750kg	76.2 (3)	25.4 (1.0)	19 (0.75)	50.8 (2)	13.46 (0.53)	M12x1.75
1000kg	76.2 (3)	31.8 (1.25)	25.4 (1)	50.8 (2)	13.24 (0.52)	M12x1.75
1500kg	76.2 (3)	31.8 (1.25)	25.4 (1)	50.8 (2)	12.1 (0.48)	M12x1.75
2000kg	108 (4.25)	31.8 (1.25)	25.4 (1)	76.2 (3)	26.7 (1.05)	M18x1.5
2500kg	108 (4.25)	31.8 (1.25)	25.4 (1)	76.2 (3)	25.48 (1)	M18x1.5
5000kg	108 (4.25)	31.8 (1.25)	25.4 (1)	76.2 (3)	20.26 (0.8)	M18x1.5
250lb	76.2 (3)	19 (0.75)	12.7 (0.5)	50.8 (2)	15.69 (0.62)	3/8-24UNF-2B
500lb	76.2 (3)	25.4 (1.0)	19 (0.75)	50.8 (2)	15.25 (0.6)	1/2-20UNF-2B
750lb	76.2 (3)	25.4 (1.0)	19 (0.75)	50.8 (2)	14.95 (0.59)	1/2-20UNF-2B
1klb	76.2 (3)	25.4 (1.0)	19 (0.75)	50.8 (2)	14.4 (0.57)	1/2-20UNF-2B
1.5klb	76.2 (3)	25.4 (1.0)	19 (0.75)	50.8 (2)	13.75 (0.54)	1/2-20UNF-2B
2klb	76.2 (3)	31.8 (1.25)	25.4 (1)	50.8 (2)	13.4 (0.53)	1/2-20UNF-2B
2.5klb	76.2 (3)	31.8 (1.25)	25.4 (1)	50.8 (2)	13.03 (0.51)	1/2-20UNF-2B
3klb	76.2 (3)	31.8 (1.25)	25.4 (1)	50.8 (2)	12.39 (0.49)	1/2-20UNF-2B
5klb	108 (4.25)	31.8 (1.25)	25.4 (1)	76.2 (3)	27.18 (1.07)	3/4-16UNF-2B
7.5klb	108 (4.25)	31.8 (1.25)	25.4 (1)	76.2 (3)	25.78 (1.01)	3/4-16UNF-2B
10klb	108 (4.25)	31.8 (1.25)	25.4 (1)	76.2 (3)	23.88 (0.94)	3/4-16UNF-2B
15klb	140 (5.51)	31.8 (1.25)	38.1 (1.31)	100 (3.94)	31 (1.22)	1-14UNS-2B
20klb	177.8 (7)	50.8 (2.0)	50.8 (2.0)	125.5 (4.94)	39.9 (1.57)	1 1/4-12UNF-2B



**Wiring:**  
 Shielded 4 conductor cable: Φ5mm  
 Standard Cable Length: 6m



## B3G

- B3G load cells are available in the capacities 50kg~10t and 50lb~20Klb
- Stainless steel, sealed by adhesive inside, oil-proof, waterproof and anti-corrosion, suitable for all kinds of environments
- S beam design, tension and/or compression loading possible, easy installation, suitable for crane scale, mechanical conversion scale, hopper scale and other electronic weighing devices
- Safe and anti-explosive product, can be used in atrocious environments and hazardous areas

### Features

- Capacities: 50kg~10t; 50lb~20Klb
- High accuracy
- Stainless steel construction
- Low profile

### Accessory

- OIML Cert. No.: R60/2000-CNI-06.02
- PTB Approval No.: D09-06.07
- NTEP Cert. No.: CC06-099A1
- HL-3-001
- HL-3-002
- HL-3-003
- HL-3-004
- HL-3-005

Specifications				
Capacity	t	50kg/100kg/250kg/500kg/1t/2.5t/5t/7.5t/10t		
	lb	50/75/100/150/200/250/300/500/750/1K/1.5K/2K/2.5K/3K/5K/10K/15K/20K		
Accuracy		C3	N3	N10
Approvals		OIML R60 C3		
Maximum Number of Verification Intervals	Nmax	3000	3000	10000
Minimum Load Cell Verification Intervals	Vmin	Emax/10000	Emax/3000	Emax/10000
Combined Error	(%FS)	≤±0.020	≤±0.030	≤±0.020
Creep	(%FS/30min)	≤±0.016	≤±0.030	≤±0.020
Temperature Effect on Sensitivity	(%FS/10°C)	≤±0.011	≤±0.020	≤±0.014
Temperature Effect on Zero	(%FS/10°C)	≤±0.015	≤±0.025	≤±0.017
Output Sensitivity	(mV/V)		3.0±0.008	
Input Resistance	(Ω)		430±60	
Output Resistance	(Ω)		351±2.0	
Insulation Resistance	(MΩ)		≥5000 (50VDC)	
Zero Balance	(%FS)		1.0	
Temperature, Compensated	(°C)		-10~+40	
Temperature, Operating	(°C)		-35~+70	
Excitation, Recommended	(V)		5~12 (DC)	
Excitation, Max	(V)		18 (DC)	
Safe Overload	(%FS)		150	
Ultimate Overload	(%FS)		300	

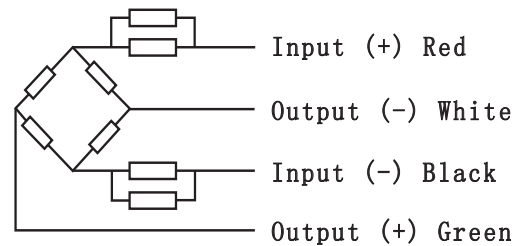
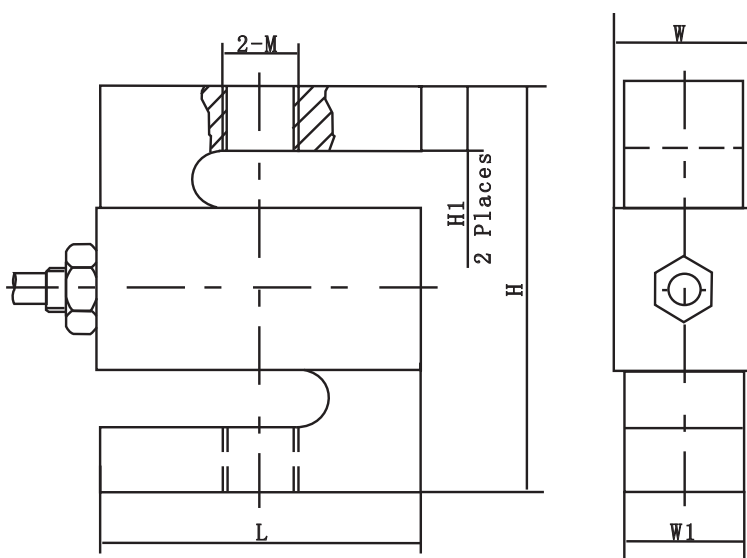
Outline Dimensions mm (inch)						
Dimension (mm)	L	H	W1	W	M	H1
Capacity						
50kg, 100kg	50.8 (2.0)	60.96 (2.4)	11.68 (0.46)	15.06 (0.59)	M8	8.89 (0.35)
50lb~300lb					1/4-28UNF	
250kg, 500kg	50.8 (2.0)	60.96 (2.4)	18.03 (0.71)	21.4 (0.84)	M12	
500lb~1.5klb					1/2-20UNF	
1t	50.8 (2.0)	60.96 (2.4)	24.38 (0.96)	27.76 (1.09)	M12	13.97 (0.55)
2, 2.5Klb					1/2-20UNF	
2.5t	76.2 (3.0)	99.06 (3.9)	24.38 (0.96)	27.76 (1.09)	M20x1.5	
3Klb					1/2-20UNF	
5t	74.68 (2.94)	99.06 (3.9)	30.74 (1.21)	34.12 (1.34)	M20x1.5	18.37 (0.72)
10Klb					3/4-16UNF	15.75 (0.62)
7.5t	87.38 (3.44)	139.7 (5.5)	37.08 (1.46)	40.46 (1.59)	M24x2	27.5 (1.08)
15Klb					1-14UNS	
10t	112.78 (4.44)	177.8 (7.0)	42.93 (1.69)	46.31 (1.82)	M30x2	39.9 (1.57)
20Klb					1 1/4-12UNS	
5klb	76.2 (3.0)	99.06 (3.9)	24.38 (0.96)	27.76 (1.09)	3/4-16UNF	13.97 (0.55)



Part Number	Capacity	Ship Weight	Price
B3G-C3-50KG-6B	50KG stainless "S" beams metric	2 lb	\$295
B3G-C3-100KG-6B	100KG stainless "S" beams metric	2 lb	\$295
B3G-C3-250KG-6B	250KG stainless "S" beams metric	2 lb	\$295
B3G-C3-500KG-6B	500KG stainless "S" beams metric	2 lb	\$295
B3G-C3-1.0t-6B	1T stainless "S" beams metric	2 lb	\$315
B3G-C3-2.5t-6B	2.5T stainless "S" beams metric	2 lb	\$385
B3G-C3-5.0t-6B	5T stainless "S" beams metric	2 lb	\$410
B3G-C3-7.5t-6B	7.5T stainless "S" beams metric	7 lb	\$545
B3G-C3-10t-6B	10T stainless "S" beams metric	13 lb	\$900
B3G-N3-50-6YB	50LB Stainless "S"Beams Imperial	2 lb	\$295
B3G-N3-75-6YB	75LB Stainless "S"Beams Imperial	2 lb	\$295
B3G-N3-15K-6YB	15K Stainless "S"Beams Imperial	7 lb	\$545
B3G-N3-20K-6YB	20K Stainless "S"Beams Imperial	13 lb	\$900
B3G-N10-100-6YB	100LB Stainless "S"Beams Imperial	2 lb	\$295
B3G-N10-150-6YB	150LB Stainless "S"Beams Imperial	2 lb	\$295
B3G-N10-200-6YB	200LB Stainless "S"Beams Imperial	2 lb	\$295
B3G-N10-250-6YB	250LB Stainless "S"Beams Imperial	2 lb	\$295
B3G-N10-300-6YB	300LB Stainless "S"Beams Imperial	2 lb	\$295
B3G-N10-500-6YB	500LB Stainless "S"Beams Imperial	2 lb	\$315
B3G-N10-750-6YB	750LB Stainless "S"Beams Imperial	2 lb	\$315
B3G-N10-1K-6YB	1K Stainless "S"Beams Imperial	2 lb	\$315
B3G-N10-1.5K-6Y	1.5K Stainless "S"Beams Imperial	2 lb	\$315
B3G-N10-2K-6YB	2K Stainless "S"Beams Imperial	2 lb	\$315
B3G-N10-2.5K-6Y	2.5K Stainless "S"Beams Imperial	2 lb	\$315
B3G-N10-3K-6YB	3K Stainless "S"Beams Imperial	4 lb	\$335
B3G-N10-5K-6YB	5K Stainless "S"Beams Imperial	4 lb	\$385
B3G-N10-10K-6YB	10K Stainless "S"Beams Imperial	4 lb	\$410

Compatible Products	
Manufacturer	Model
Revere	M9363
Celtron	STC
Sensortronics	60050

Load Cells



**Wiring:**  
 Shielded 4 conductor cable:  $\Phi$ 5mm  
 Standard Cable Length: 6m



## H3G

- H3G load cells are available in the capacities 50kg~7.5t and 50lb~20Klb
- Alloy steel, sealed by adhesive inside, oil-proof, waterproof and anti-corrosion, suitable for all kinds of environments
- S beam design, tension and/or compression loading possible, easy installation, suitable for crane scale, mechanical conversion scale, hopper scale and other electronic weighing devices
- Safe and anti-explosive product, can be used in atrocious environments and hazardous areas

### Features

- Capacity: 50kg~10t; 150lb~20Klb
- High accuracy
- Alloy steel construction
- Low profile
- OIML Cert. No.: R60/2000-NL1-10.30
- NTEP Cert. No.: CC06-099A1

### Accessory

- HL-3-001
- HL-3-002
- HL-3-003
- HL-3-004
- HL-3-005



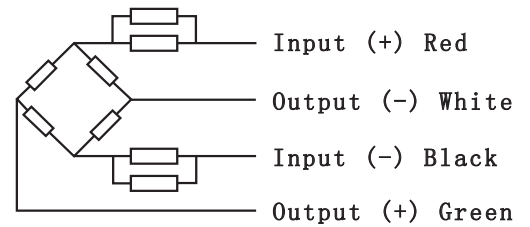
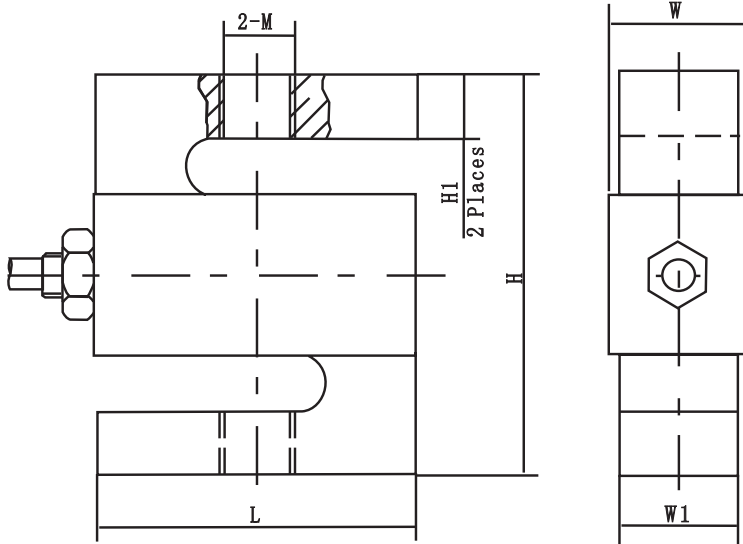
Specifications		0.05/0.1/0.25/0.5/1/2.5/5/7.5		
Capacity	t			
	lb	50/75/100/150/200/250/300/500/750/1K/1.5K/2K/2.5K/3K/5K/10K/15K/20K		
Accuracy		C3	N3	N10
Maximum Number of Verification Intervals	Nmax	3000	3000	10000
Minimum Load Cell Verification Intervals	Vmin	Emax/10000	Emax/3000	Emax/10000
Combined Error	(%FS)	≤±0.020	≤±0.030	≤±0.020
Creep	(%FS/30min)	≤±0.016	≤±0.030	≤±0.020
Temperature Effect on Sensitivity	(%FS/10°C)	≤±0.011	≤±0.020	≤±0.014
Temperature Effect on Zero	(%FS/10°C)	≤±0.015	≤±0.025	≤±0.017
Output Sensitivity	(mV/V)	3.0±0.008		
Input Resistance	(Ω)	430±60		
Output Resistance	(Ω)	351±2.0		
Insulation Resistance	(MΩ)	≥5000 (50VDC)		
Zero Balance	(%FS)	1.0		
Temperature, Compensated	(°C)	-10~+40		
Temperature, Operating	(°C)	-35~+70		
Excitation, Recommended	(V)	5~12 (DC)		
Excitation, Max	(V)	18 (DC)		
Safe Overload	(%FS)	150		
Ultimate Overload	(%FS)	300		

Outline Dimensions mm (inch)						
Dimension (mm)	L	H	W1	W	M	H1
Capacity						
50kg, 100kg	50.8 (2.0)	63.5 (2.5)	12.7 (0.5)	16.07 (0.63)	M8	10.16 (0.4)
50lb~300lb					1/4-28UNF	
200kg, 500kg	50.8 (2.0)	63.5 (2.5)	19.05 (0.75)	22.43 (0.88)	M12	
500lb~1.5Klb					1/2-20UNF	
1t	50.8 (2.0)	63.5 (2.5)	25.4 (1.0)	28.78 (1.13)	M12	
2, 2.5Klb					1/2-20UNF	
2.5t	76.2 (3.0)	101.6 (4.0)	25.4 (1.0)	28.78 (1.13)	M20x1.5	15.2 (0.6)
3Klb					1/2-20UNF	
5t	76.2 (3.0)	101.6 (4.0)	25.4 (1.0)	28.78 (1.13)	M20x1.5	20 (0.79)
5Klb, 10Klb					3/4-16UNF	15.24 (0.6)
7.5t	101.6 (4.0)	139.7 (5.5)	31.75 (1.25)	35.13 (1.38)	M24x2	30 (1.18)
15Klb					1-14UNS	31 (1.22)
20Klb	127 (5)	177.8 (7.0)	50.8 (2.0)	54.6 (2.15)	1 1/4-12UNF	39.9 (1.57)



Part Number	Capacity	Ship Weight	Price
H3G-C3-50KG-6B	50KG alloy steel "S" beams metric	2 lb	\$235
H3G-C3-100KG-6B	100KG alloy steel "S" beams metric	2 lb	\$235
H3G-C3-250KG-6B	250KG alloy steel "S" beams metric	2 lb	\$235
H3G-C3-500KG-6B	500KG alloy steel "S" beams metric	2 lb	\$235
H3G-C3-1.0t-6B	1T alloy steel "S" beams metric	2 lb	\$250
H3G-C3-2.5t-6B	2.5T alloy steel "S" beams metric	4 lb	\$290
H3G-C3-5.0t-6B	5T alloy steel "S" beams metric	4 lb	\$290
H3G-C3-7.5t-6B	7.5T alloy steel "S" beams metric	7 lb	\$345
H3G-N3-50-6YB	50LB alloy steel "S" beams imperial	2 lb	\$235
H3G-N3-75-6YB	75LB alloy steel "S" beams imperial	2 lb	\$235
H3G-N3-15K-6YB	15K alloy steel "S" beams imperial	7 lb	\$345
H3G-N3-20K-6YB	20K alloy steel "S" beams imperial	18 lb	\$455
H3G-N10-100-6YB	100LB alloy steel "S" beams imperial	2 lb	\$235
H3G-N10-150-6YB	150LB alloy steel "S" beams imperial	2 lb	\$235
H3G-N10-200-6YB	200LB alloy steel "S" beams imperial	2 lb	\$235
H3G-N10-250-6YB	250LB alloy steel "S" beams imperial	2 lb	\$235
H3G-N10-300-6YB	300LB alloy steel "S" beams imperial	2 lb	\$235
H3G-N10-500-6YB	500LB alloy steel "S" beams imperial	2 lb	\$235
H3G-N10-750-6YB	750LB alloy steel "S" beams imperial	2 lb	\$235
H3G-N10-1K-6YB	1K alloy steel "S" beams imperial	2 lb	\$235
H3G-N10-1.5K-6Y	1.5K alloy steel "S" beams imperial	2 lb	\$235
H3G-N10-2K-6YB	2K alloy steel "S" beams imperial	2 lb	\$250
H3G-N10-2.5K-6Y	2.5K alloy steel "S" beams imperial	2 lb	\$250
H3G-N10-3K-6YB	3K alloy steel "S" beams imperial	4 lb	\$290
H3G-N10-5K-6YB	5K alloy steel "S" beams imperial	4 lb	\$290
H3G-N10-10K-6YB	10K alloy steel "S" beams imperial	4 lb	\$290

Compatible Products	
Manufacturer	Model
Revere	M363
Celtron	STC
Sensortronics	60001
Artech	20210
Rice Lake	RL20000/20001
Totalcomp	TS-SS
Transcell	BSA/BSS
Vishay	STC



**Wiring:**  
 Shielded 4 conductor cable:  $\Phi 5\text{mm}$   
 Standard Cable Length: 6m





## BM3

- BM3 load cells are available in the capacities 1t~7.5t
- Stainless steel, hermetically welded, oil-proof, waterproof and anti-corrosion, suitable for all kinds of environments
- S beam design, tension and/or compression loading possible, easy installation, suitable for electronic crane scale, hopper scale and other electronic weighing devices
- Safe and anti-explosive product, can be used in atrocious environments and hazardous areas

### Features

- Capacities: 1t~7.5t
- High accuracy
- Stainless steel construction
- Low profile
- PTB Approval No.: D09-08.01
- NTEP Cert. No.: CC06-099A1

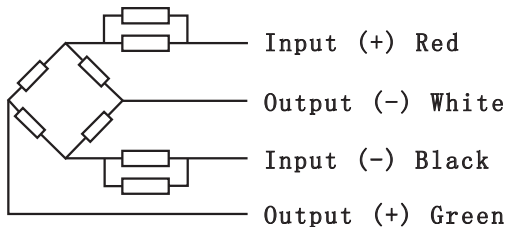
### Accessory

- HL-3-001
- HL-3-002
- HL-3-003
- HL-3-004
- HL-3-005



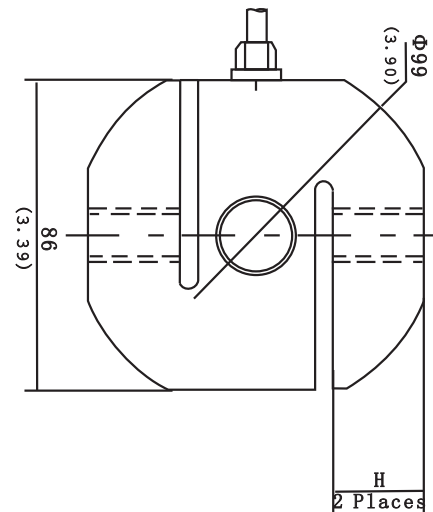
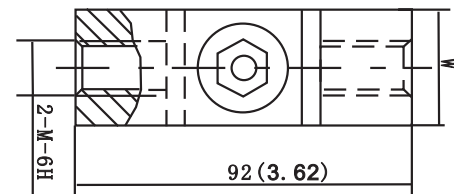
Specifications		
Capacity	t	1/2/3/4/5/6
Accuracy		C3
Approvals		OIML R60 C3
Maximum Number of Verification Intervals	Nmax	3000
Minimum Number of Verification Intervals	Vmin	Emax/10000
Combined Error	(%FS)	±0.020
Creep	(%FS/30min)	±0.016
Temperature Effect on Sensitivity	(%FS/10°C)	±0.011
Temperature Effect on Zero	(%FS/10°C)	±0.015
Output Sensitivity	(mV/V)	2.0±0.004
Input Resistance	(Ω)	350±3.5
Output Resistance	(Ω)	351±2.0
Insulation Resistance	(MΩ)	≥5000 (50VDC)
Zero Balance	(%FS)	1.5
Temperature, Compensated	(°C)	-10~+40
Temperature, Operating	(°C)	-35~+70
Excitation, Recommended	(V)	5~12 (DC)
Excitation, Max	(V)	18 (DC)
Safe Overload	(%FS)	150
Ultimate Overload	(%FS)	300

Outline Dimensions mm (inch)			
Dimension (mm)	W	M	H
Capacity (t)			
1.0	32 (1.26)	M12x1.75	25 (0.98)
2.0-2.5	32 (1.26)	M20x1.15	25 (0.98)
3.0	32 (1.26)	M20x1.15	25 (0.98)
4.0	36 (1.42)	M20x1.5	25 (0.98)
5.0	50 (1.97)	M24x2	24 (0.94)
6.0	50 (1.97)	M24x2	24 (0.94)



### Wiring:

Shielded 4 conductor cable: Φ5mm  
Standard Cable Length: 3m (500kg), 6m (1t~7.5t)



Part Number	Capacity	Ship Weight	Price
BM3-C3-1.0t-3B	1T stainless "S" beams metric	4 lb	\$360
BM3-C3-2.0t-3B	2T stainless "S" beams metric	4 lb	\$360
BM3-C3-3.0t-3B	3T stainless "S" beams metric	4 lb	\$360
BM3-C3-4.0t-3B	4T stainless "S" beams metric	4 lb	\$360
BM3-C3-5.0t-3B	5T stainless "S" beams metric	7 lb	\$440
BM3-C3-6.0t-3B	6T stainless "S" beams metric	7 lb	\$440



## L3V

- L3V load cells are available in the capacities 200kg and 500kg
- Aluminum material, sealed with silicon adhesive, surface spraying plastic with good resistance against corrosion
- Integral construction, easy installation
- Suitable for textile machinery measuring and other electronic measuring fields

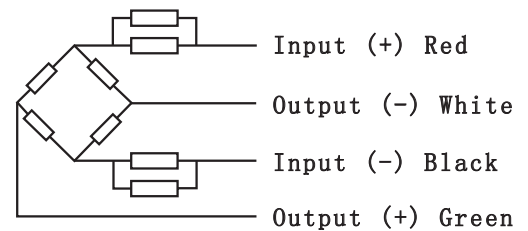
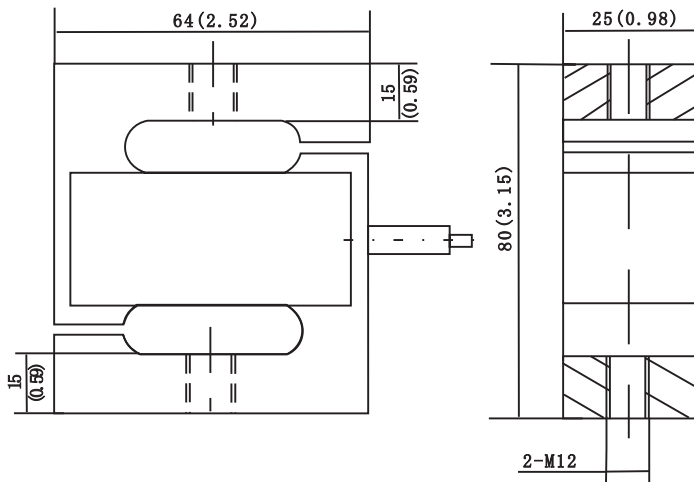
### Features

- Capacities: 200kg~500kg
- High accuracy
- Aluminum S beam
- High reliability



Load Cells

Specifications		
Capacity	kg	200/500
Accuracy		C2
Maximum Number of Verification Intervals	Nmax	2000
Minimum Load Cell Verification Interval	Vmin	E <sub>max</sub> /5000
Combined Error	(%FS)	≤±0.030
Creep	(%FS/30min)	≤±0.024
Temperature Effect on Sensitivity	(%FS/10°C)	≤±0.03
Temperature Effect on Zero	(%FS/10°C)	≤±0.5
Output Sensitivity	(mV/V)	2.3±0.2
Input Resistance	(Ω)	410±30
Output Resistance	(Ω)	351±2
Insulation Resistance	(MΩ)	≥5000 (50VDC)
Zero Balance	(%FS)	2
Temperature, Compensated	(°C)	-10~+40
Temperature, Operating	(°C)	-35~+65
Excitation, Recommended	(V)	5~12 (DC)
Excitation, Max	(V)	18 (DC)
Safe Overload	(%FS)	120
Ultimate Overload	(%FS)	150



### Wiring:

Shielded 4 conductor cable: Φ5mm, 3±0, 2mm, and cable jacket is PVC  
Standard Cable Length: 2.6±0.1m

Part Number	Capacity	Ship Weight	Price
L3V-C2-0.2t-2.6	200KG aluminum "S" beams metric	2 lb	\$345
L3V-C2-0.5t-2.7	500KG aluminum "S" beams metric	2 lb	\$345

Central Carolina Scale, Inc  
(919) 776-7737