



H2A

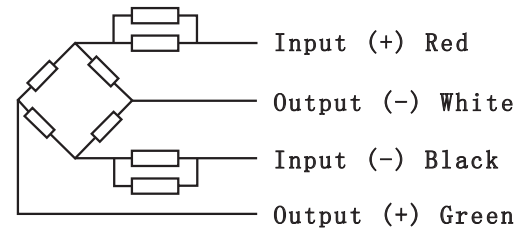
- H2A load cells are available in the manifold accurate measurement in the capacities 1MN to 5MN
- Alloy steel, surface bluing treatment, spray painted, oil-proof, waterproof and anti-corrosion, suitable for ground sill measuring and other engineering measuring fields
- Spoke type, easy installation, suitable for special force measuring equipment
- Safety and anti-explosive product, can be used in atrocious environments and hazardous areas

Features

- Capacities: 1MN~5MN
- Alloy steel construction
- High reliability and long life span



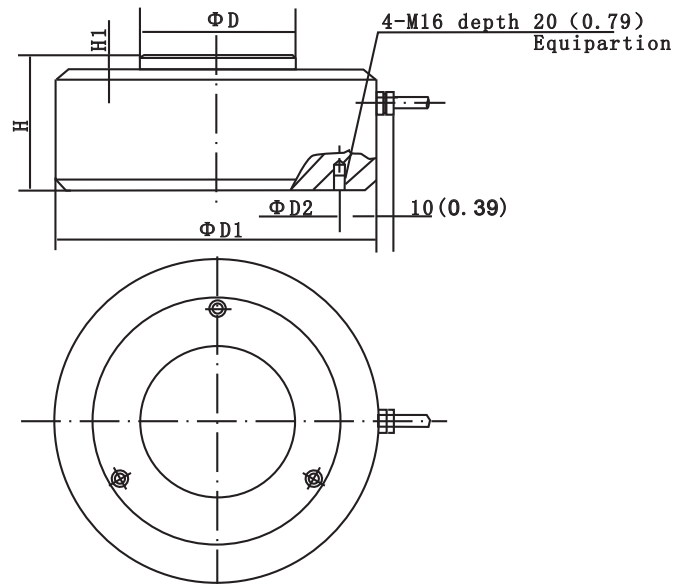
Specifications			
Capacity	MN	1/2/3/4/5	
Accuracy		G2	G3
Combined Error	(%FS)	0.2%	0.3%
Creep	(%FS/30min)	0.05%	0.05%
Temperature Effect on Sensitivity	(%FS/10°C)	0.1%	0.2%
Temperature Effect on Zero	(%FS/10°C)	0.1%	0.2%
Output Sensitivity	(mV/V)	≥2.0	
Input Resistance	(Ω)	1072±5	
Output Resistance	(Ω)	1050±5	
Insulation Resistance	(MΩ)	≥5000 (50VDC)	
Zero Balance	(%FS)	1.0	
Temperature, Compensated	(°C)	-10~+40	
Temperature, Operating	(°C)	-35~+70	
Excitation, Recommended	(V)	5~12 (DC)	
Excitation, Max	(V)	18 (DC)	
Safe Overload	(%FS)	150	
Ultimate Overload	(%FS)	300	



Wiring:

Shielded 4 conductor cable: Φ5mm
Standard Cable Length: 5m

Outline Dimensions mm (inch)					
Capacity (MN)	1	2	3	4	5
Dimension					
D	41 (1.61)	60 (2.36)	73 (2.87)	92 (3.62)	115 (4.53)
D1	260 (10.24)	290 (11.42)	330 (12.99)	400 (15.75)	400 (15.75)
D2	200 (7.87)	225 (8.86)	251 (9.88)	296 (11.65)	307 (12.09)
H	80 (3.15)	104 (4.09)	123 (4.84)	132 (5.20)	132 (5.20)
H1	10 (0.39)	10 (0.39)	10 (0.39)	10 (0.39)	10 (0.39)



Part Number	Capacity	Ship Weight	Price
H2A-G2-1MN-5T	1MN alloy steel spoke	77 lb	\$3,205
H2A-G2-2MN-5T	2MN alloy steel spoke	88 lb	\$4,000
H2A-G2-3MN-5T	3MN alloy steel spoke	101 lb	\$4,795
H2A-G2-4MN-5T	4MN alloy steel spoke	121 lb	\$5,585
H2A-G2-5MN-5T	5MN alloy steel spoke	121 lb	\$6,375

Central Carolina Scale, Inc
919-776-7737



H2D

- H2D load cells are available for manifold accurate measurement in the capacities 5t~20t
- Alloy steel, sealed by adhesive, oil-proof, waterproof and anti-corrosion, suitable for all kinds of environments
- Spoke type, easy installation, suitable for crane scale, hopper scale and other electronic weighing devices
- Safe and anti-explosive product, can be used in atrocious environments and hazardous areas

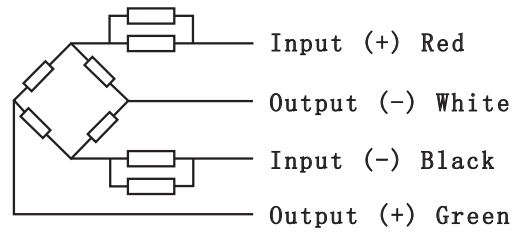
Features

- Capacities: 5t~20t
- Alloy steel construction
- High accuracy



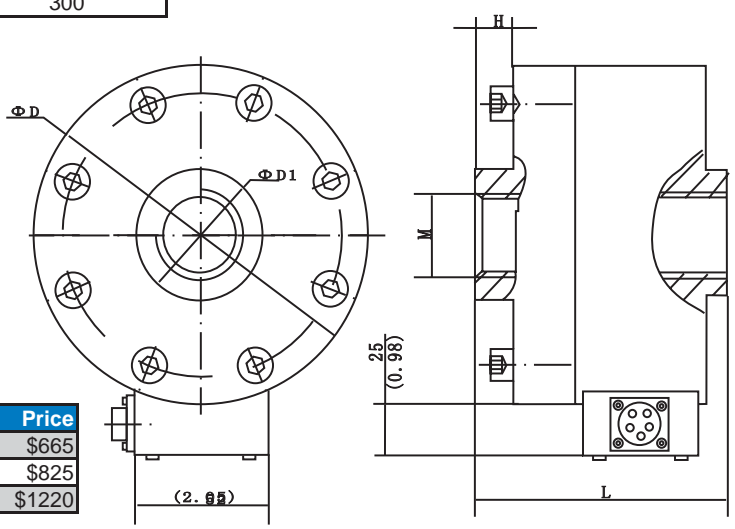
Load Cells

Specifications		
Capacity	t	5/10/20
Accuracy		C2
Maximum Number of Verification Intervals	Nmax	2000
Minimum Load Cell Verification Interval	Vmin	E _{max} /5000
Combined Error	(%FS)	≤±0.030
Creep	(%FS/30min)	≤±0.023
Temperature Effect on Sensitivity	(%FS/10°C)	≤±0.017
Temperature Effect on Zero	(%FS/10°C)	≤±0.029
Output Sensitivity	(mV/V)	2.0±0.008
Input Resistance	(Ω)	750±10
Output Resistance	(Ω)	700±7
Insulation Resistance	(MΩ)	≥5000 (50VDC)
Zero Balance	(%FS)	1.0
Temperature, Compensated	(°C)	-10~+40
Temperature, Operating	(°C)	-35~+70
Excitation, Recommended	(V)	5~12 (DC)
Excitation, Max	(V)	18 (DC)
Safe Overload	(%FS)	150
Ultimate Overload	(%FS)	300



Wiring:
 Five-wire connector
 Shielded 4 conductor cable: Φ5mm
 Standard Cable Length: 5m

Outline Dimensions mm (inch)					
Dimension (mm)	L	D	D1	M	H
Capacity (t)					
5	83 (3.27)	128 (5.04)	45 (1.77)	M24X2	8 (0.31)
10	150 (5.91)	160 (6.03)	60 (2.36)	M39X2	30 (1.18)
20	220 (8.66)	200 (7.78)	80 (2.99)	M60X2	60 (2.36)



Part Number	Capacity	Ship Weight	Price
H2D-C2-5.0t-5B	5T alloy steel spoke metric	18 lb	\$665
H2D-C2-10.0t-5B	10T alloy steel spoke metric	40 lb	\$825
H2D-C2-20.0t-5B	20T alloy steel spoke metric	51 lb	\$1220



HM2D4

- HM2D4 load cells are available for manifold accurate measurement in the capacities 0.5t~20t
- Alloy steel, completely welded, oil-proof, waterproof and anti-corrosive gas and medium, suitable for all kinds of environments
- Spoke type, suitable for electronic truck scales, hopper scales, automotive testing equipment, and other electronic weighing or force measuring fields

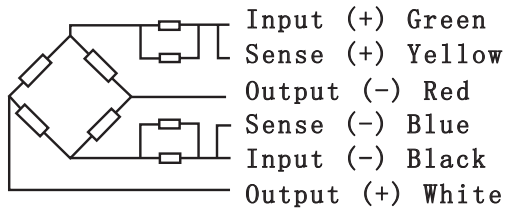
Features

- Capacities: 0.5t~20t
- Alloy steel construction
- High accuracy
- Low profile



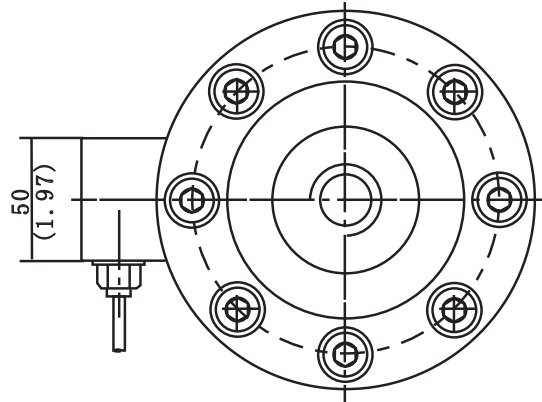
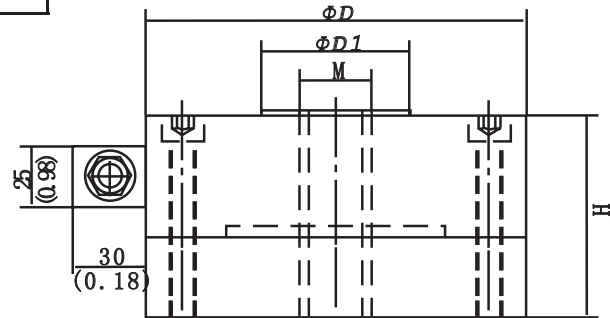
Specifications		
Capacity	t	0.5/1/2/3/5/10/20/50
Accuracy		C3
Maximum Number of Verification Intervals	Nmax	2000
Minimum Load Cell Verification Intervals	Vmin	E _{max} /5000
Combined Error	(%FS)	≤±0.030
Creep	(%FS/30min)	≤±0.024
Temperature Effect on Sensitivity	(%FS/10°C)	≤±0.017
Temperature Effect on Zero	(%FS/10°C)	≤±0.023
Output Sensitivity	(mV/V)	2.0±0.002
Input Resistance	(Ω)	350±3
Output Resistance	(Ω)	351±2
Insulation Resistance	(MΩ)	≥5000 (50VDC)
Zero Balance	(%FS)	1.0
Temperature, Compensated	(°C)	-10~+40
Temperature, Operating	(°C)	-35~+70
Excitation, Recommended	(V)	5~12 (DC)
Excitation, Max	(V)	18 (DC)
Safe Overload	(%FS)	150
Ultimate Overload	(%FS)	300

Outline Dimensions mm (inch)				
Dimension (mm)	D	D1	H	M
Capacity (t)				
0.5t~2t	105 (4.13)	28 (1.10)	70 (2.76)	M14x2
3t, 5t	120 (4.72)	33 (1.3)	80 (3.15)	M20x1.5
10t, 20t	155 (6.10)	60.5 (2.38)	90 (3.54)	M32x2
50t	200 (7.87)	75 (2.95)	120 (4.72)	M45x3



Wiring:

Shielded 6 conductor cable: Φ5mm
Standard Cable Length: 5m



Part Number	Capacity	Ship Weight	Price
HM2D4-C3-5t-5B	0.5T alloy steel spoke metric		\$640
HM2D4-C3-1t-5B6	1T alloy steel spoke metric		\$640
HM2D4-C3-2t-5B6	2T alloy steel spoke metric		\$640
HM2D4-C3-3t-5B6	3T alloy steel spoke metric		\$755
HM2D4-C3-5t-5B6	5T alloy steel spoke metric		\$755
HM2D4-C3-10t-5B	10T alloy steel spoke metric		\$1,020
HM2D4-C3-20t-5B	20T alloy steel spoke metric		\$1,020
HM2D4-C3-50t-5B	50T alloy steel spoke metric		\$2,075



H2F

- H2F load cells are available for manifold accurate measurement in the capacities 1t~50t
- Alloy steel, potted with adhesive inside, oil-proof, waterproof and anti-corrosion, suitable for all kinds of environments
- Spoke type, easy installation, suitable for electronic truck scales, hopper scales and other electronic weighing devices
- Safe and anti-explosive product, can be used in atrocious environments and hazardous areas



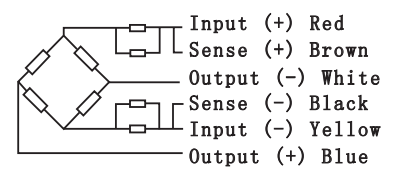
Features

- Capacities: 1t~50t
- Alloy steel construction
- High accuracy

Accessory

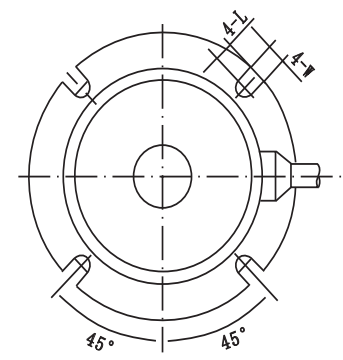
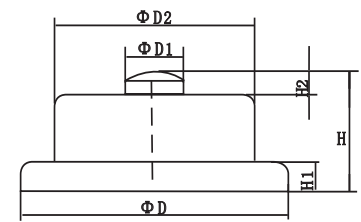
- BM-2-402
- HM-2-401

Specifications			
Capacity	t	1/2/3/5/10/15/20/30/50	
Accuracy		C1	C2
Maximum Number of Verification Intervals	Nmax	1000	2000
Minimum Load Cell Verification Intervals	Vmin	Emax/3000	Emax/5000
Combined Error	(%FS)	≤±0.050	≤±0.030
Creep	(%FS/30min)	≤±0.038	≤±0.023
Temperature Effect on Sensitivity	(%FS/10°C)	≤±0.028	≤±0.017
Temperature Effect on Zero	(%FS/10°C)	≤±0.047	≤±0.029
Output Sensitivity	(mV/V)	2.0±0.01	
Input Resistance	(Ω)	770±30	
Output Resistance	(Ω)	700±5	
Insulation Resistance	(MΩ)	≥5000 (50VDC)	
Zero Balance	(%FS)	1.5	
Temperature, Compensated	(°C)	-10~+40	
Temperature, Operating	(°C)	-35~+70	
Excitation, Recommended	(V)	5~12 (DC)	
Excitation, Max	(V)	18 (DC)	
Safe Overload	(%FS)	150	
Ultimate Overload	(%FS)	300	



Wiring:

Shielded 6 conductor cable: Φ6mm
Standard Cable Length: 3m (1~3t), 4m (5~10t), 15m (15~50t)



Outline Dimensions mm (inch)								
Dimension (mm)	D	D1	D2	H	H1	H2	L	W
Capacity (t)								
1	115 (4.53)	22 (0.87)	86 (3.39)	43 (1.69)	12 (0.47)	5 (0.2)	8 (0.31)	8.4 (0.33)
2	120 (4.72)	26 (1.02)	90 (3.54)	45 (1.77)	12 (0.47)	5 (0.2)	8 (0.31)	8.4 (0.33)
3	128 (5.04)	20 (0.79)	100 (3.94)	46 (1.81)	8 (0.31)	5 (0.2)	7 (0.28)	10.4 (0.41)
5	128 (5.04)	20 (0.79)	100 (3.94)	46 (1.81)	8 (0.31)	5 (0.2)	7 (0.28)	10.4 (0.41)
10	160 (6.3)	40 (1.57)	120 (4.72)	63 (2.48)	15 (0.59)	10 (0.39)	10 (0.39)	10.4 (0.41)
15	194 (7.64)	42 (1.65)	154 (6.06)	68 (2.68)	20 (0.79)	10 (0.39)	12 (0.47)	12.4 (0.49)
20	220 (8.66)	44 (1.73)	170 (6.69)	73 (2.87)	22 (0.87)	10 (0.39)	12 (0.47)	12.4 (0.49)
30	230 (9.06)	48 (1.89)	188 (7.4)	78 (3.07)	25 (0.98)	10 (0.39)	12 (0.47)	12.4 (0.49)
50	264 (10.39)	52 (2.05)	214 (8.43)	90 (3.54)	30 (1.18)	10 (0.39)	12 (0.47)	12.4 (0.49)

Part Number	Capacity	Ship Weight	Price
H2F-C1-1.0t-3T6	1T alloy spoke	4 lb	\$470
H2F-C1-2.0t-3T6	2T alloy spoke	4 lb	\$470
H2F-C1-3.0t-3T6	3T alloy spoke	7 lb	\$470
H2F-C1-5.0t-3T6	5T alloy spoke	7 lb	\$470
H2F-C1-10t-3T6	10T alloy spoke	18 lb	\$665
H2F-C1-15t-3T6	15T alloy spoke	20 lb	\$825
H2F-C1-20t-3T6	20T alloy spoke	29 lb	\$1,075
H2F-C1-30t-3T6	30T alloy spoke	33 lb	\$1,300
H2F-C1-50t-3T6	50T alloy spoke	53 lb	\$1,460
H2F-C2-1.0t-3T6	1T alloy spoke	4 lb	\$470
H2F-C2-2.0t-3T6	2T alloy spoke	4 lb	\$470
H2F-C2-3.0t-3T6	3T alloy spoke	7 lb	\$470
H2F-C2-5t-3T6	5T alloy spoke	7 lb	\$470
H2F-C2-10t-3T6	10T alloy spoke	18 lb	\$665
H2F-C2-15t-3T6	15T alloy spoke	20 lb	\$825
H2F-C2-20t-3T6	20T alloy spoke	29 lb	\$1,075
H2F-C2-30t-3T6	30T alloy spoke	33 lb	\$1,300
H2F-C2-50T-3T6	50T alloy spoke	53 lb	\$1,460



BM24R

- BM24R applied a ring type, suitable for all kinds of platform scales and dynamic weighing systems
- Stainless steel, hermetically sealed IP68, low profile load cell for all kinds of hazardous applications



BM24R 60kg-280kg BM24R 250kg-13t BM24R 28t-60t
 Accessory: BJ-24-202 BJ-24-203 BJ-24-204 BJ-24-205
 BM-24-401 BM-24-402 BM-24-403

Features

- Capacities: 60kg~60t
- OIML Cert. No.: R60/2000-NL-11.21
- High accuracy
- NTEP Cert. No.: CC11-103A1

Specifications						
Capacity		60kg / 130kg / 250kg / 280kg / 500kg / 1t / 2t / 3.5t / 5t / 10t / 13t / 28t / 60t				
Accuracy	(%FS)	C3				
Maximum Number of Verification Intervals	Nmax	3000				
Minimum Load Cell Verification Intervals	Vmin	Emax/10000				
Combined Error	(%FS)	≤±0.0230				
Creep	(%FS/30min)	≤±0.0245				
Temperature Effect on Sensitivity	(%FS/10°C)	≤±0.0117				
Temperature Effect on Zero	(%FS/10°C)	≤±0.0140				
Output Sensitivity	(mV/V)	60kg / 130kg / 280kg	250kg		500kg~60t	
		1.0±0.1	1.75±0.1		2.0±0.1	
Input Resistance	(Ω)	60kg / 130kg / 280kg	250kg / 500kg~10t	13t	28t	60t
		1260±100	1100±100	1200±100	1075±100	1350±100
Output Resistance	(Ω)	60kg / 130kg / 280kg	250kg / 500kg~10t	13t	28t	60t
		1020±0.5	1025±25	1000±0.5	930±0.5	1175±0.5
Insulation Resistance	(MΩ)	≥5000 (50VDC)				
Zero Balance	(%FS)	1.0				
Temperature, Compensated	(°C)	-10~+40				
Temperature, Operating	(°C)	-30~+70				
Excitation, Recommended	(V)	5~12 (DC)				
Excitation, Max	(V)	15 (DC)				
Safe Overload	(%FS)	150				
Ultimate Overload	(%FS)	300				
Recommended Torque on Fixation Bolt	Nm	60 kg / 130 kg / 280 kg	250kg / 500kg~10t	13t	28t	60t
		8	10	-	-	-
Protection Class		IP68				

Part Number	Capacity	Ship Weight	Price
BM24R-C3-250KG	250KG S.S spoke		\$1,350
BM24R-C3-500KG	500KG S.S spoke		\$1,350
BM24R-C3-60KG	60KG S.S spoke		\$1,400
BM24R-C3-130KG	130KG S.S spoke		\$1,400
BM24R-C3-280KG	280KG S.S spoke		\$1,400
BM24R-C3-1T	1T S.S spoke		\$1,350
BM24R-C3-2T	2T S.S sspoke		\$1,350
BM24R-C3-3.5T	3.5T S.S spoke		\$1,460
BM24R-C3-5T	5T S.S spoke		\$1,460
BM24R-C3-10T	10T S.S sspoke		\$1,750
BM24R-C3-13T	13T S.S spoke		\$1,820
BM24R-C3-28T	28T S.S spoke		\$2,300
BM24R-C3-60T	60T S.S spoke		\$2,880

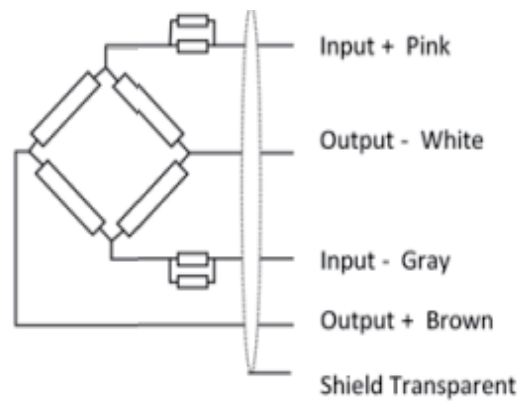
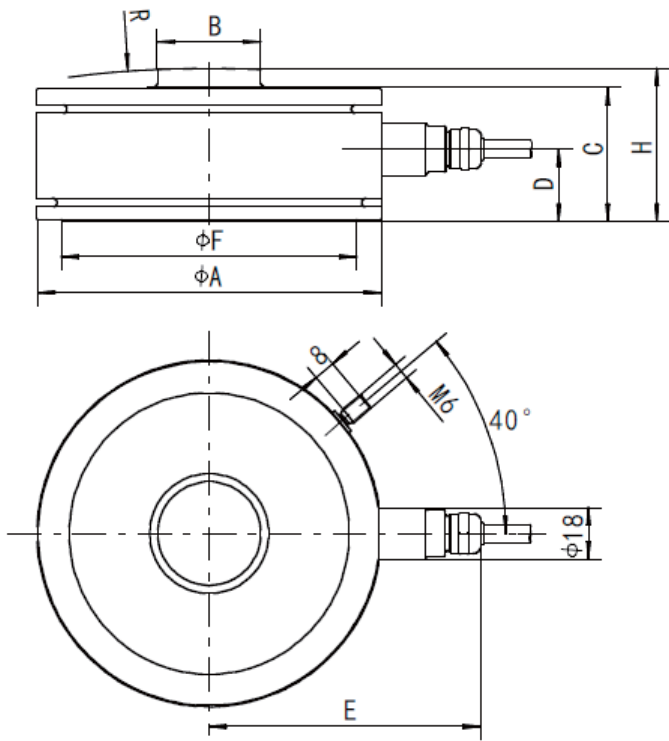
Compatible Products

Manufacturer	Model
Revere	RLC



Outline Dimensions mm (inch)												
Dimension	ΦA	ΦB	C	D	E	ΦF	G	H	I	J	ΦK	SR
Capacity												
60kg,130kg,280kg	63	15.1	22	11	60	54	6	10	Φ32	-	-	-
0.25t/0.5t/1t	80	19	25	12.5	65	71	10	18	M10	1	25	-
2t/3.5t	80	19	30	12.5	65	71	10	18	Φ15	6	25	-
10t	95	26	35	12.5	72	75	20.7	31.2	-	-	29	-
13t	95	26	35	20	85	79.5	20	31	-	-	29	-
28t	120	35.9	46	25	94	102	-	53	-	-	-	400
60t	140	47.9	62	34	104	124	-	69	-	-	-	600

Capacity	Cable Length
60kg	3m
130kg	
250kg	
280kg	
500kg	
1t	6m
2t	
3.5t	
5t	15m
10t	
13t	
28t	
60t	



Wiring:
Shielded 4 conductor cable: Φ6.2mm±0.1mm