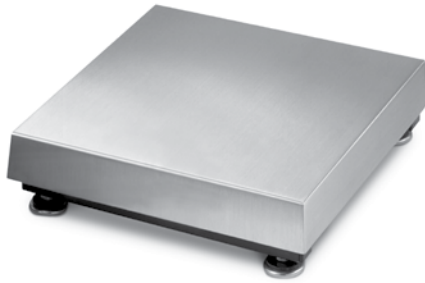


BenchMark™ Mild, Stainless Steel, HE Series



STANDARD FEATURES

- 304 stainless steel construction
- LifeGuard™ base design isolates load cell from overloads and shock loads for added durability
- Specially designed adjustable support feet provide exceptional traction and won't scratch surfaces

SPECIFICATIONS

Load Cell, NTEP Certified:

Mild steel and stainless steel:
aluminum, environmentally sealed
HE: Stainless steel, hermetically sealed, IP69

Output Impedance:

Mild steel and stainless steel:
350 ohms
HE: 1000 ohms

Maximum Overload:

150-200% depending on capacity

Overload Protection:

Five point, independently adjusted

Cable Length:

10 ft (3 m)

Compensated Temperature Range:

14°F to 104°F (-10°C to 40°C)

Warranty:

Mild steel and stainless steel:
Two-year limited warranty
HE: Three-year limited warranty including water ingress

Approvals:

NTEP CC 95-072, Class III, 5,000d,
Measurement Canada AM-5082,
Class III, 5,000d

APPROVALS



Measurement
Canada
Approved

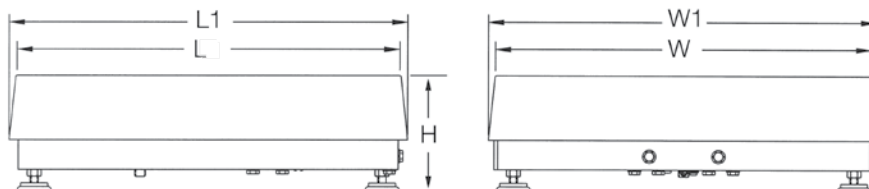


Meets USDA
Requirements

DIMENSIONS

PART # (MILD)	PART # (STAINLESS)	PART # (HE)	CAPACITY	PLATFORM SIZE	L1	W1	H (MILD & STAINLESS STEEL)	H (HE)
18580	N/A	N/A	30 (15 kg)	12 x 12 in	12.50 in	12.50 in	4.12 in	N/A
18582	N/A	N/A	50 (25 kg)	12 x 12 in	12.50 in	12.50 in	4.12 in	N/A
18584	N/A	N/A	100 (50 kg)	12 x 12 in	12.50 in	12.50 in	4.12 in	N/A
18586	32918	86950	50 (25 kg)	12 x 18 in	12.50 in	18.50 in	MS 4.12 in SST 3.62 in	4 in
18588	32919	86951	100 (50 kg)	12 x 18 in	12.50 in	18.50 in	MS 4.12 in SST 3.62 in	4 in
18590	18591	86952	50 (25 kg)	18 x 18 in	18.75 in	18.75 in	5.25 in	5.25 in
18592	18593	86953	100 (50 kg)	18 x 18 in	18.75 in	18.75 in	5.25 in	5.25 in
18594	18595	86954	150 (75 kg)	18 x 18 in	18.75 in	18.75 in	5.25 in	5.25 in
18596	18597	86955	200 (100 kg)	18 x 18 in	18.75 in	18.75 in	5.25 in	5.25 in
18598	18599	86956	250 (125 kg)	18 x 18 in	18.75 in	18.75 in	5.25 in	5.5 in
18600	18601	86957	300 (150 kg)	18 x 18 in	18.75 in	18.75 in	5.25 in	5.5 in
18602	18603	86958	500 (250 kg)	18 x 18 in	18.75 in	18.75 in	5.25 in	5.5 in
18604	18605	86959	1,000 (500 kg)	18 x 18 in	18.75 in	18.75 in	5.25 in	5.5 in
18606	18607	86960	50 (25 kg)	18 x 24 in	24.75 in	18.75 in	5.25 in	5.25 in
18608	18609	86961	100 (50 kg)	18 x 24 in	24.75 in	18.75 in	5.25 in	5.25 in
18610	18611	86962	150 (75 kg)	18 x 24 in	24.75 in	18.75 in	5.25 in	5.25 in
18612	18613	86963	200 (100 kg)	18 x 24 in	24.75 in	18.75 in	5.25 in	5.25 in
18614	18615	86964	250 (125 kg)	18 x 24 in	24.75 in	18.75 in	5.25 in	5.5 in
18616	18617	86965	300 (150 kg)	18 x 24 in	24.75 in	18.75 in	5.25 in	5.5 in
18618	18619	86966	500 (250 kg)	18 x 24 in	24.75 in	18.75 in	5.25 in	5.5 in
18620	18621	86967	1,000 (500 kg)	18 x 24 in	24.75 in	18.75 in	5.25 in	5.5 in
18622	18623	86968	100 (50 kg)	24 x 24 in	24.75 in	24.75 in	5.25 in	5.25 in
18624	18625	86969	150 (75 kg)	24 x 24 in	24.75 in	24.75 in	5.25 in	5.25 in
18626	18627	86970	200 (100 kg)	24 x 24 in	24.75 in	24.75 in	5.25 in	5.25 in
18628	18629	86971	250 (125 kg)	24 x 24 in	24.75 in	24.75 in	5.25 in	5.5 in
18630	18631	86972	300 (150 kg)	24 x 24 in	24.75 in	24.75 in	5.25 in	5.5 in
18632	18633	86973	500 (250 kg)	24 x 24 in	24.75 in	24.75 in	5.25 in	5.5 in
18634	18635	86974	1,000 (500 kg)	24 x 24 in	24.75 in	24.75 in	5.25 in	5.5 in

Note: 1"=25.4 mm



PART NUMBER/PRICE

PART #	CAPACITY	PLATFORM DIMENSIONS	EST. SHIP WEIGHT	PRICE
Mild Steel Series				
18580	30 lb	12 x 12 x 4.12 in	20 lb	Consult
18582	50 lb	12 x 12 x 4.12 in	20 lb	Consult
18584	100 lb	12 x 12 x 4.12 in	20 lb	Consult
18586	50 lb	12 x 18 x 4.12 in	37 lb	Consult
18588	100 lb	12 x 18 x 4.12 in	37 lb	Consult
18590	50 lb	18 x 18 x 5.25 in	68 lb	Consult
18592	100 lb	18 x 18 x 5.25 in	68 lb	Consult
18594	150 lb	18 x 18 x 5.25 in	68 lb	Consult
18596	200 lb	18 in x 18 x 5.25 in	68 lb	Consult
18598	250 lb	18 x 18 x 5.25 in	68 lb	Consult
18600	300 lb	18 x 18 x 5.25 in	68 lb	Consult
18602	500 lb	18 x 18 x 5.25 in	68 lb	Consult
18604	1,000 lb	18 x 18 x 5.25 in	68 lb	Consult
18606	50 lb	18 x 24 x 5.25 in	78 lb	Consult
18608	100 lb	18x 24 x 5.25 in	78 lb	Consult
18610	150 lb	18 x 24 x 5.25 in	78 lb	Consult
18612	200 lb	18 x 24 x 5.25 in	78 lb	Consult
18614	250 lb	18 x 24 x 5.25 in	78 lb	Consult
18616	300 lb	18 x 24 x 5.25 in	78 lb	Consult
18618	500 lb	18 x 24 x 5.25 in	78 lb	Consult
18620	1,000 lb	18 x 24 x 5.25 in	78 lb	Consult
18622	100 lb	24 x 24 x 5.25 in	78 lb	Consult
18624	150 lb	24 x 24 x 5.25 in	84 lb	Consult
18626	200 lb	24 x 24 x 5.25 in	84 lb	Consult
18628	250 lb	24 x 24 x 5.25 in	84 lb	Consult
18630	300 lb	24 x 24 x 5.25 in	84 lb	Consult
18632	500 lb	24 x 24 x 5.25 in	84 lb	Consult
18634	1,000 lb	24 x 24 x 5.25 in	84 lb	Consult
Stainless Steel Series				
32918	50 lb	12 x 18 x 3.62 in	37 lb	Consult
32919	100 lb	12 x 18 x 3.62 in	37 lb	Consult
18591	50 lb	18 x 18 x 5.25 in	68 lb	Consult
18593	100 lb	18 x 18 x 5.25 in	68 lb	Consult
18595	150 lb	18 x 18 x 5.25 in	68 lb	Consult
18597	200 lb	18 x 18 x 5.25 in	68 lb	Consult
18599	250 lb	18 x 18 x 5.25 in	68 lb	Consult
18601	300 lb	18 x 18 x 5.25 in	68 lb	Consult
18603	500 lb	18 x 18 x 5.25 in	68 lb	Consult
18605	1,000 lb	18 x 18 x 5.25 in	68 lb	Consult
18607	50 lb	18 x 24 x 5.25 in	78 lb	Consult
18609	100 lb	18 x 24 x 5.25 in	78 lb	Consult
18611	150 lb	18 x 24 x 5.25 in	78 lb	Consult
18613	200 lb	18 x 24 x 5.25 in	78 lb	Consult
18615	250 lb	18 x 24 x 5.25 in	78 lb	Consult
18617	300 lb	18 x 24 x 5.25 in	78 lb	Consult
18619	500 lb	18 x 24 x 5.25 in	78 lb	Consult
18621	1,000 lb	18 x 24 x 5.25 in	78 lb	Consult
18623	100 lb	24 x 24 x 5.25 in	84 lb	Consult
18625	150 lb	24 x 24 x 5.25 in	84 lb	Consult
18627	200 lb	24 x 24 x 5.25 in	84 lb	Consult
18629	250 lb	24 x 24 x 5.25 in	84 lb	Consult

PART NUMBER/PRICE

PART #	CAPACITY	PLATFORM DIMENSIONS	EST. SHIP WEIGHT	PRICE
18631	300 lb	24 x 24 x 5.25 in	84 lb	Consult
18633	500 lb	24 x 24 x 5.25 in	84 lb	Consult
18635	1,000 lb	24 x 24 x 5.25 in	84 lb	Consult
HE Series				
86950	50 lb	12 x 18 x 4 in	37 lb	Consult
86951	100 lb	12 x 18 x 4 in	37 lb	Consult
86952	50 lb	18 x 18 x 5.25 in	68 lb	Consult
86953	100 lb	18 x 18 x 5.25 in	68 lb	Consult
86954	150 lb	18 x 18 x 5.25 in	68 lb	Consult
86955	200 lb	18 x 18 x 5.25 in	68 lb	Consult
86956	250 lb	18 x 18 x 5.5 in	68 lb	Consult
86957	300 lb	18 x 18 x 5.5 in	68 lb	Consult
86958	500 lb	18 x 18 x 5.5 in	68 lb	Consult
86959	1,000 lb	18 x 18 x 5.5 in	68 lb	Consult
86960	50 lb	18 x 24 x 5.25 in	78 lb	Consult
86961	100 lb	18 x 24 x 5.25 in	78 lb	Consult
86962	150 lb	18 x 24 x 5.25 in	78 lb	Consult
86963	200 lb	18 x 24 x 5.25 in	78 lb	Consult
86964	250 lb	18 x 24 x 5.5 in	78 lb	Consult
86965	300 lb	18 x 24 x 5.5 in	78 lb	Consult
86966	500 lb	18 x 24 x 5.5 in	78 lb	Consult
86967	1,000 lb	18 x 24 x 5.5 in	78 lb	Consult
86968	100 lb	24 x 24 x 5.25 in	84 lb	Consult
86969	150 lb	24 x 24 x 5.25 in	84 lb	Consult
86970	200 lb	24 x 24 x 5.25 in	84 lb	Consult
86971	250 lb	24 x 24 x 5.5 in	84 lb	Consult
86972	300 lb	24 x 24 x 5.5 in	84 lb	Consult
86973	500 lb	24 x 24 x 5.5 in	84 lb	Consult
86974	1,000 lb	24 x 24 x 5.5 in	84 lb	Consult

OPTIONS/ACCESSORIES

PART #	DESCRIPTION	PRICE
53001**	304 stainless steel clamshell for added load cell protection (12 x 12 in, 12 x 18 in) (for mild and stainless steel)	Consult
41292**	304 stainless steel clamshell for added load cell protection (18 x 18 in, 18 x 24 in and 24 x 24 in), does not include 1,000 lb capacity (for mild and stainless steel)	Consult
18805**	304 stainless steel clamshell for added load cell protection (18 x 18 in 18 x 24 in and 24 x 24 in), 1,000 lb capacity only	Consult
112044	12 in column for IQ plus® 355 or IQ plus® 210, 320IS (without battery option), 320IS Plus (without battery option), 390-DC or IQ plus® 590-DC, 420 plus®, CW-90, CW-90X and 480 Legend	Consult
112045*	18 in column for IQ plus® 355 or IQ plus® 210, 320IS (without battery option), 320IS Plus (without battery option) 390-DC or IQ plus® 590-DC, 420 plus®, CW-90, CW-90X and 480 Legend	Consult
64576	Attachment bracket for IQ plus® 355 or IQ plus® 210, 420 plus, 320IS (without battery option), 320IS Plus (without battery option) and 480 Legend	Consult
64577	Attachment bracket for IQ plus® 390-DC or IQ plus® 590-DC	Consult
22125	Additional operating manual	Consult

* Not recommended for use with scale bases smaller than 12 x 12 in

** Not for use with HE Series