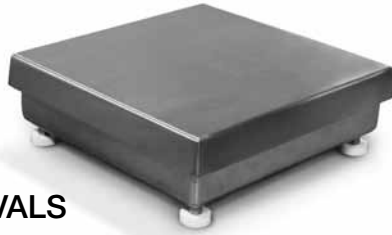


# CW-90B Light-Capacity Bench Scales



## STANDARD FEATURES

- 304 stainless steel construction
- Five point overload protection
- Specially designed adjustable support feet provide exceptional traction and will not scratch surfaces
- Aluminum environmentally sealed load cell

## APPROVALS



Measurement  
Canada  
Approved



## SPECIFICATIONS

**Load Cell, NTEP Certified:**  
Aluminum and environmentally sealed

**Output Impedance:**  
350 ohms

**Maximum Overload:**  
180% to 200% depending on capacity

**Overload Protection:**  
Five point, independently adjusted

**Cable Length:**  
34 in or 10 ft

**Compensated Temperature Range:**  
14°F to 104°F (-10°C to 40°C)

**Warranty:**  
Two-year limited warranty

**Approvals:**  
NTEP CC 95-072, Class III 5,000d  
Measurement Canada AM-5082, Class III 5,000d

## PART NUMBER/PRICE

PART #		PLATFORM CAPACITY	DIMENSIONS	EST. SHIP WEIGHT	PRICE
<b>10ft cable</b>	<b>34in cable</b>				
112599	106137	5 lb	10 x 10 x 4.25 in	14 lb	Consult
112601	106138	10 lb	10 x 10 x 4.25 in	14 lb	Consult
112603	106139	25 lb	10 x 10 x 4.25 in	14 lb	Consult
112605	106140	25 lb	12 x 12 x 4.25 in	17 lb	Consult
112607	106141	50 lb	12 x 12 x 4.25 in	17 lb	Consult
112609	106142	100 lb	12 x 12 x 4.25 in	17 lb	Consult

## OPTIONS/ACCESSORIES

PART #	DESCRIPTION	PRICE
112044	12 in column for IQ plus® 355, IQ plus® 210, 320IS (without battery option), 320IS plus (without battery option), IQ plus® 390-DC, IQ plus® 590-DC, 420 plus®, CW-90, CW-90X and 480 Legend	Consult
112045**	18 in column for IQ plus® 355 or IQ plus® 210, 320IS (without battery option), 320IS plus (without battery option), IQ plus® 390-DC, IQ plus® 590-DC, 420 plus®, CW-90, CW-90X and 480 Legend	Consult

\*\* Not recommended for use with scale bases smaller than 12 in x 12 in

## DRAWING DIMENSIONS

10 in x 10 in			
A	4.25 in (107.95 mm)	C	10.37 in (263.40 mm)
B	10.37 in (263.40 mm)		
12 in x 12 in			
A	4.25 in (107.95 mm)	C	12.37 in (314.20 mm)
B	12.37 in (314.20 mm)		

