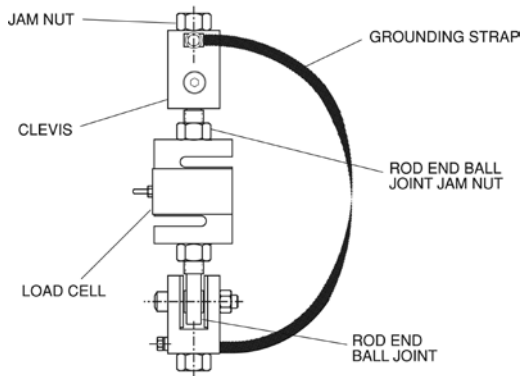
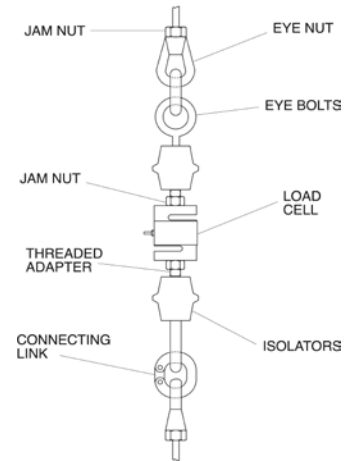


# Mounting Assembly Component Identification/Jam Nuts

## Mounting Assembly Component Identification



ITCM Isolated Tension Cell Mounting Assembly



Conventional Tension Mounting Assembly

Our popular Isolated Tension Cell Mounting ITCM Assembly and other conventional suspended weighing system assemblies employ a variety of serviceable hardware components. Rice Lake Weighing Systems offers a comprehensive selection of these items for all of your suspended vessel service needs. These drawings are designed to enable you to quickly identify and differentiate components from both of these common designs. All corresponding replacement hardware is located on the following pages.

### Jam Nuts



Important: Read "Load Cell Mounting Hardware Safety Guidelines" at the beginning of this section.

### STANDARD FEATURES

- Mild Steel/Stainless Steel
- Coarse or fine thread
- Zinc-plated mild steel or stainless steel

THREAD SIZE	PART #	PRICE
<b>Mild Steel, Fine Thread:</b>		
1/4-28 NF	14639	\$0.25
3/8-24 NF	14651	0.25
1/2-20 NF	14664	1.25
3/4-16 NF	14687	1.25
1-12 NF	14702	5.25
1-14 NF	14703	4.25
1 1/4-12 NF	14708	3.00
1 1/2-12 NF	14711	4.30
<b>Mild Steel, Coarse Thread:</b>		
1/4-20 NC	14636	0.25
3/8-16 NC	14649	1.70
1/2-13 NC	14661	0.25
5/8-11 NC	14676	1.70
3/4-10 NC	14686	0.75
1-8 NC	14701	0.90
1-1/4-7 NC	14707	2.75

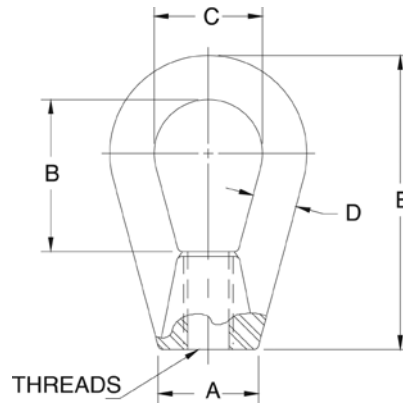
THREAD SIZE	PART #	PRICE
<b>Stainless Steel, Fine Thread:</b>		
1/4-28 NF	14640	\$1.00
1/2-20 NF	14665	1.50
3/4-16 NF	14688	2.00
<b>Stainless Steel, Coarse Thread:</b>		
3/8-16 NC	14653	1.75
1/2-13 NC	14662	1.50
5/8-11 NC	14680	1.75
3/4-10 NC	14690	1.80

Central Carolina Scale, Inc  
 5393 Farrell Road  
 Sanford, NC 27330

Call: 919-776-7737  
 Email: info@ccscale.com

## Eye Nuts/Coupling Nuts

### Eye Nuts



### STANDARD FEATURES

- Drop-forged steel, tapped NC right-hand threads

### PART NUMBER/PRICE

PART #	A	B	C	D	E	THREAD SIZE	SAFE LOAD*	PRICE						
17772	0.50 in	12.7 mm	1.06 in	26.9 mm	0.75 in	19.1 mm	0.25 in	6.4 mm	1.68 in	42.7 mm	1/4-20 NC	500 lb	226.8 kg	\$36.00
17773	0.75 in	19.1 mm	1.18 in	30.0 mm	0.87 in	22.1 mm	0.31 in	7.9 mm	2.25 in	57.2 mm	3/8-16 NC	1800 lb	816.5 kg	21.00
17774	1.00 in	25.4 mm	1.56 in	39.6 mm	1.12 in	28.5 mm	0.43 in	10.9 mm	3.00 in	76.2 mm	1/2-13 NC	3600 lb	1632.9 kg	36.00
17775	1.25 in	31.8 mm	1.93 in	49.0 mm	1.37 in	34.8 mm	0.56 in	14.2 mm	3.75 in	95.3 mm	5/8-11 NC	5800 lb	2630.8 kg	41.00
17776	1.75 in	44.5 mm	1.87 in	47.5 mm	1.50 in	38.1 mm	0.75 in	19.1 mm	3.87 in	98.3 mm	3/4-10 NC	10,600 lb	4808.1 kg	50.00
17777	2.25 in	57.2 mm	2.12 in	53.9 mm	1.75 in	44.5 mm	1.00 in	25.4 mm	4.75 in	120.7 mm	1-8 NC	18,800 lb	8527.6 kg	132.00

\*Do not exceed the safe load

### Coupling Nuts



### STANDARD FEATURES

- Heavy hex

### PART NUMBER/PRICE

PART #	THREAD SIZE	LENGTH	FLAT	SAFE LOAD*	PRICE			
14638	1/4-20 NC	1.75 in	44.5 mm	0.44 in	11.2 mm	500 lb	226.8 kg	\$4.95
14650	3/8-16 NC	1.75 in	44.5 mm	0.62 in	15.8 mm	1500 lb	680.4 kg	5.45
14663	1/2-13 NC	1.75 in	44.5 mm	0.87 in	22.1 mm	3000 lb	1360.8 kg	5.45
14681	5/8-11 NC	2.12 in	53.8 mm	1.06 in	26.9 mm	7500 lb	3402.0 kg	8.15
14691	3/4-10 NC	2.25 in	57.1 mm	1.25 in	31.8 mm	10,000 lb	4535.9 kg	9.25

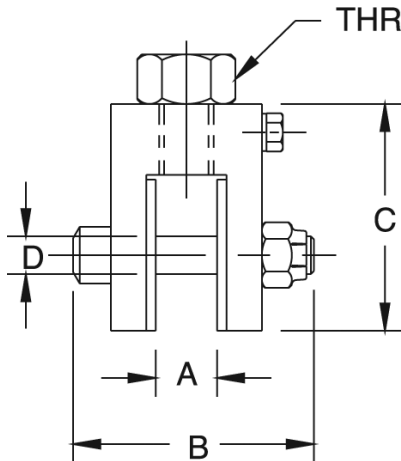
\*Do not exceed the safe load

Important: Read "Load Cell Mounting Hardware Safety Guidelines" at the beginning of this section.

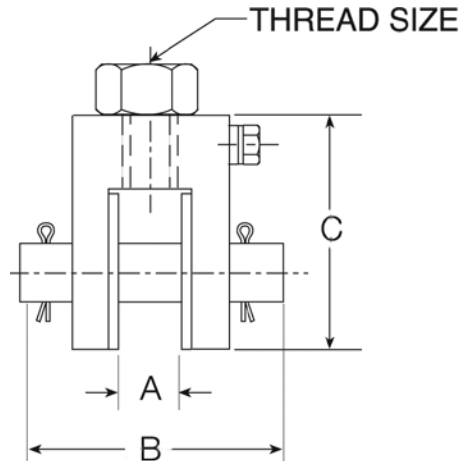
# Clevis Mount Assemblies

## STANDARD FEATURES

- Mild Steel
- Assembly used in the ITCM
- Adapts rod to rod-end ball joint
- Provides electrical isolation for load cell protection
- Elimination of unwanted side loads
- Optional stainless steel provides enhanced corrosion resistance



Clevis Mount with bolt



Clevis Mount with pin

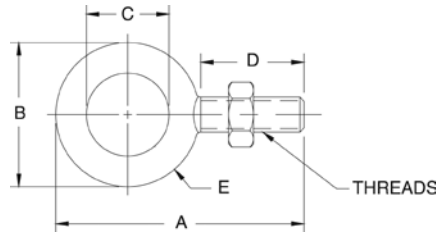
## PART NUMBER/PRICE

PART #	A	B	C	D	THREAD SIZE	SAFE LOAD*	PRICE					
<b>Mild Steel with bolt:</b>												
17792	0.52 in	13.2 mm	2.38 in	60.5 mm	1.94 in	49.3 mm	0.38 in	9.5 mm	3/8-16 NC	300 lb	136.1 kg	\$75.00
17793	0.52 in	13.2 mm	2.38 in	60.5 mm	1.94 in	49.3 mm	0.38 in	9.5 mm	1/2-13 NC	300 lb	136.1 kg	75.00
17783	0.39 in	9.9 mm	1.81 in	46.0 mm	1.69 in	42.9 mm	0.25 in	6.4 mm	1/2-13 NC	500 lb	226.8 kg	78.00
17784	0.65 in	16.5 mm	2.68 in	68.1 mm	2.31 in	58.7 mm	0.50 in	12.7 mm	3/4-10 NC	4000 lb	1814.4 kg	78.00
17785	0.78 in	19.8 mm	3.37 in	85.6 mm	3.00 in	76.2 mm	0.62 in	15.8 mm	1-8 NC	10,000 lb	4535.9 kg	78.00
17786	0.39 in	9.9 mm	1.81 in	46.0 mm	1.69 in	42.9 mm	0.25 in	6.4 mm	3/8-16 NC	500 lb	226.8 kg	78.00
17787	0.65 in	16.5 mm	2.68 in	68.1 mm	2.31 in	58.7 mm	0.50 in	12.7 mm	1/2-13 NC	2000 lb	907.2 kg	78.00
17788	0.65 in	16.5 mm	2.68 in	68.1 mm	2.31 in	58.7 mm	0.50 in	12.7 mm	5/8-11 NC	2500 lb	1134.0 kg	78.00
17789	0.78 in	19.8 mm	3.37 in	85.6 mm	3.00 in	76.2 mm	0.62 in	15.8 mm	3/4-10 NC	5000 lb	2268.0 kg	78.00
<b>Mild Steel with pin:</b>												
17790	1.39 in	35.3 mm	4.12 in	104.6 mm	4.50 in	114.3 mm	1.00 in	25.4 mm	1 1/4-7 NC	15,000 lb	6803.9 kg	295.00
17791	1.22 in	31.0 mm	4.12 in	104.6 mm	5.00 in	127.0 mm	1.25 in	31.8 mm	1 1/2-6 NC	20,000 lb	9071.9 kg	295.00
<b>Stainless Steel with pin:</b>												
33644	0.52 in	13.2 mm	2.38 in	60.5 mm	1.94 in	49.3 mm	0.38 in	9.5 mm	1/2-13 NC	300 lb	136.1 kg	155.00
33643	0.39 in	9.9 mm	1.81 in	46.0 mm	1.69 in	42.9 mm	0.25 in	6.4 mm	1/2-13 NC	500 lb	226.8 kg	155.00
33641	0.39 in	9.9 mm	1.81 in	46.0 mm	1.69 in	42.9 mm	0.25 in	6.4 mm	3/8-16 NC	500 lb	226.8 kg	155.00
33658	0.52 in	13.2 mm	2.38 in	60.5 mm	1.94 in	49.3 mm	0.38 in	9.5 mm	3/8-16 NC	500 lb	226.8 kg	155.00
33642	0.65 in	16.5 mm	2.68 in	68.1 mm	2.31 in	58.7 mm	0.50 in	12.7 mm	3/4-10 NC	4000 lb	1814.4 kg	205.00
33640	0.65 in	16.5 mm	2.68 in	68.1 mm	2.31 in	58.7 mm	0.50 in	12.7 mm	1/2-13 NC	2000 lb	907.2 kg	205.00
33639	0.65 in	16.5 mm	2.68 in	68.1 mm	2.31 in	58.7 mm	0.50 in	12.7 mm	5/8-11 NC	2500 lb	1134.0 kg	205.00
33638	0.78 in	19.8 mm	3.37 in	85.6 mm	3.00 in	76.2 mm	0.62 in	15.8 mm	3/4-10 NC	5000 lb	2268.0 kg	205.00

\*Do not exceed the safe load

# Load Cell Eye Bolts

## Load Cell Eye Bolts



## STANDARD FEATURES

- One jam nut included with each eye bolt

## PART NUMBER/PRICE

PART #	A	B	C	D	E	THREAD SIZE	SAFE LOAD*	PRICE						
<b>Mild Steel:</b>														
17705	2.25 in	57.2 mm	1.25 in	31.8 mm	0.75 in	19.1 mm	1.00 in	25.4 mm	0.25 in	6.4 mm	1/4-28 NF	500 lb	226.8 kg	\$16.00
17707	2.91 in	73.9 mm	1.66 in	42.2 mm	1.00 in	25.4 mm	1.25 in	31.8 mm	0.33 in	8.4 mm	3/8-24 NF	1300 lb	589.7 kg	16.00
17709	3.56 in	90.4 mm	2.06 in	52.3 mm	1.19 in	30.2 mm	1.50 in	38.1 mm	0.44 in	11.2 mm	1/2-20 NF	2400 lb	1088.6 kg	19.00
17711	4.25 in	108.0 mm	2.50 in	63.5 mm	1.37 in	34.8 mm	1.75 in	44.5 mm	0.56 in	14.2 mm	5/8-18 NF	4000 lb	1814.4 kg	25.00
17713	4.81 in	122.2 mm	2.81 in	71.4 mm	1.50 in	38.1 mm	2.00 in	50.8 mm	0.66 in	16.8 mm	3/4-16 NF	5000 lb	2267.9 kg	55.00
17715	6.06 in	153.9 mm	3.56 in	90.4 mm	1.81 in	46.0 mm	2.50 in	63.5 mm	0.87 in	22.1 mm	1-12 NF	9000 lb	4082.3 kg	80.00
17716	6.06 in	153.9 mm	3.56 in	90.4 mm	1.81 in	46.0 mm	2.50 in	63.5 mm	0.87 in	22.1 mm	1-14 NS	9000 lb	4082.3 kg	78.00
17718	7.44 in	189.0 mm	4.44 in	112.8 mm	2.19 in	55.6 mm	3.00 in	76.2 mm	1.12 in	28.4 mm	1 1/4-12 NF	15,000 lb	6803.9 kg	85.00
17704	2.25 in	57.2 mm	1.25 in	31.8 mm	0.75 in	19.1 mm	1.00 in	25.4 mm	0.25 in	6.4 mm	1/4-20 NC	500 lb	226.8 kg	15.00
17706	2.91 in	73.9 mm	1.66 in	42.2 mm	1.00 in	25.4 mm	1.25 in	31.8 mm	0.33 in	8.4 mm	3/8-16 NC	1300 lb	589.7 kg	15.00
17708	3.56 in	90.4 mm	2.06 in	52.3 mm	1.19 in	30.2 mm	1.50 in	38.1 mm	0.44 in	11.2 mm	1/2-13 NC	2400 lb	1088.6 kg	17.00
17710	4.25 in	108.0 mm	2.50 in	63.5 mm	1.37 in	34.8 mm	1.75 in	44.5 mm	0.56 in	14.2 mm	5/8-11 NC	4000 lb	1814.4 kg	27.00
17712	4.81 in	122.2 mm	2.81 in	71.4 mm	1.50 in	38.1 mm	2.00 in	50.8 mm	0.66 in	16.8 mm	3/4-10 NC	5000 lb	2267.9 kg	45.00
17714	6.06 in	153.9 mm	3.56 in	90.4 mm	1.81 in	46.0 mm	2.50 in	63.5 mm	0.87 in	22.1 mm	1-8 NC	9000 lb	4082.3 kg	47.00
17717	7.44 in	189.0 mm	4.44 in	112.8 mm	2.19 in	55.6 mm	3.00 in	76.2 mm	1.12 in	28.4 mm	1 1/4-7 NC	15,000 lb	6803.9 kg	135.00

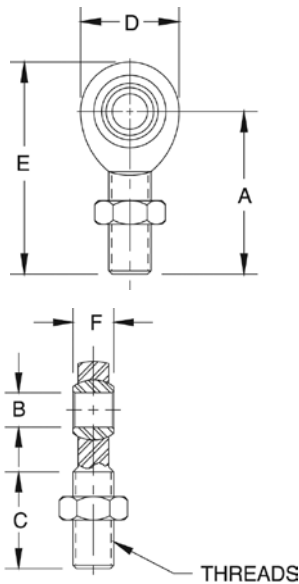
\*Do not exceed the safe load

Important: Read "Load Cell Mounting Hardware Safety Guidelines" at the beginning of this section.

# Rod End Ball Joints



PTFE Lined Standard



## STANDARD FEATURES

- Used in the ITCM assembly
- One jam nut included with each rod end ball joint
- Standard or PTFE-lined
- Optional stainless steel provides enhanced corrosion resistance for hostile environments

## PART NUMBER/PRICE

PART #	SAFE LOAD*		BREAKING STRENGTH		PTFE LINED	PRICE
<b>Mild Steel:</b>						
17746	975 lb	453.6 kg	3915 lb	1913.3 kg	YES	\$28.00
17734	1200 lb	544.3 kg	4916 lb	2229.9 kg	NO	19.00
17736	4000 lb	1814.4 kg	16,238 lb	7365.5 kg	NO	55.00
17738	7000 lb	3175.2 kg	28,081 lb	12,737.4 kg	NO	93.00
17735	2000 lb	907.2 kg	8075 lb	3662.8 kg	NO	24.00
17737	3250 lb	1474.2 kg	13,831 lb	6273.7 kg	NO	36.00
17739	500 lb	226.8 kg	2158 lb	978.9 kg	YES	28.00
17740	4000 lb	1814.4 kg	16,238 lb	7365.5 kg	YES	49.00
17741	10,000 lb	4535.9 kg	40,572 lb	18,403.2 kg	YES	70.00
17742	10,500 lb	4762.7 kg	43,541 lb	19,749.9 kg	NO	135.00
26007	15,000 lb	6803.9 kg	76,200 lb	34,563.8 kg	YES	260.00
17747	19,000 lb	8618.3 kg	76,200 lb	34,563.8 kg	YES	325.00
17743	20,000 lb	9071.9 kg	79,728 lb	36,164.1 kg	NO	232.00
17744	24,000 lb	10,886.2 kg	96,510 lb	43,776.3 kg	NO	335.00
17745	55,000 lb	24,947.7 kg	225,457 lb	102,265.9 kg	NO	340.00
<b>Stainless Steel:</b>						
33506	1500 lb	680.4 kg	7362 lb	3339.4 kg	YES	125.00
33505	500 lb	226.8 kg	2158 lb	978.9 kg	YES	125.00
33507	3000 lb	1360.8 kg	16,238 lb	7365.5 kg	YES	135.00
33508	7,000 lb	3175.2 kg	40,572 lb	18,403.2 kg	YES	315.00

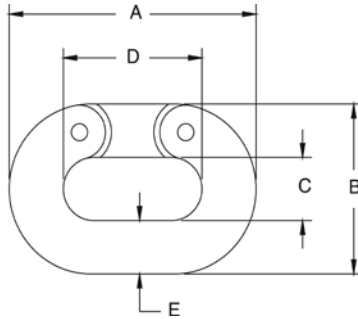
\*Do not exceed the safe load

## DIMENSIONS

PART #	A	B	C	D	E	F	THREAD SIZE
<b>Mild Steel:</b>							
17746	1.94 in	49.3 mm	0.37 in	9.4 mm	1.25 in	31.8 mm	1.00 in
17734	1.94 in	49.3 mm	0.37 in	9.4 mm	1.25 in	31.8 mm	1.00 in
17736	2.44 in	62.0 mm	0.50 in	12.7 mm	1.50 in	38.1 mm	1.31 in
17738	2.87 in	72.9 mm	0.75 in	19.1 mm	1.75 in	44.5 mm	1.75 in
17735	2.44 in	62.0 mm	0.50 in	12.7 mm	1.50 in	38.1 mm	1.31 in
17737	2.87 in	72.9 mm	0.75 in	19.1 mm	1.75 in	44.5 mm	1.75 in
17739	1.56 in	39.6 mm	0.25 in	6.4 mm	1.00 in	25.4 mm	0.75 in
17740	2.44 in	62.0 mm	0.50 in	12.7 mm	1.50 in	38.1 mm	1.31 in
17741	2.87 in	72.9 mm	0.62 in	15.8 mm	1.75 in	44.5 mm	1.75 in
17742	4.12 in	104.7 mm	1.00 in	25.4 mm	2.12 in	53.9 mm	2.75 in
26007	4.12 in	104.7 mm	1.00 in	25.4 mm	2.12 in	53.9 mm	2.75 in
17747	4.12 in	104.7 mm	1.00 in	25.4 mm	2.12 in	53.9 mm	2.75 in
17743	4.12 in	104.7 mm	1.25 in	31.8 mm	2.12 in	53.9 mm	2.75 in
17744	5.37 in	136.4 mm	1.50 in	38.1 mm	3.00 in	76.2 mm	3.50 in
17745	8.00 in	203.2 mm	2.00 in	50.8 mm	4.62 in	117.4 mm	5.00 in
<b>Stainless Steel:</b>							
33506	1.94 in	49.3 mm	.37 in	9.4 mm	1.25 in	31.8 mm	1.00 in
33505	1.56 in	39.6 mm	.25 in	6.4 mm	1.00 in	25.4 mm	.75 in
33507	2.44 in	62.0 mm	.50 in	12.7 mm	1.50 in	38.1 mm	1.31 in
33508	2.87 in	72.9 mm	.62 in	15.8 mm	1.75 in	44.5 mm	1.75 in

## Connecting Links/Load Cell Isolators

### Connecting Links



### STANDARD FEATURES

- Drop-forged carbon steel, heat-treated, hot-dipped galvanized finish

### PART NUMBER/PRICE

PART #	A	B	C	D	E	SAFE LOAD*	PRICE						
17794	1.50 in	38.1 mm	1.00 in	25.4 mm	0.43 in	10.9 mm	0.87 in	22.1 mm	0.25 in	6.4 mm	1325 lb	601.6 kg	\$24.00
17795	2.06 in	52.3 mm	1.37 in	34.8 mm	0.56 in	14.2 mm	1.12 in	28.5 mm	0.37 in	9.4 mm	2750 lb	1247.4 kg	26.00
17796	2.65 in	67.3 mm	1.71 in	43.4 mm	0.65 in	16.5 mm	1.46 in	37.1 mm	0.50 in	12.7 mm	4750 lb	2154.6 kg	26.00
17797	3.31 in	84.1 mm	2.09 in	53.1 mm	0.78 in	19.8 mm	1.81 in	46.0 mm	0.62 in	15.8 mm	7250 lb	3288.6 kg	38.00
17798	3.87 in	98.3 mm	2.50 in	63.5 mm	0.93 in	23.6 mm	2.12 in	53.9 mm	0.75 in	19.1 mm	10,250 lb	4649.3 kg	55.00
17799	5.00 in	127.0 mm	3.31 in	84.1 mm	1.25 in	31.8 mm	2.75 in	69.9 mm	1.00 in	25.4 mm	15,500 lb	7030.7 kg	90.00

\*Do not exceed the safe load

### Load Cell Isolators



### STANDARD FEATURES

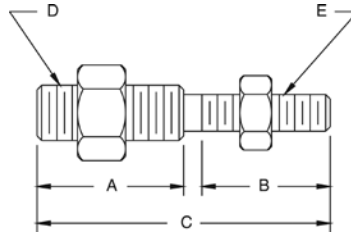
- Power surges such as those caused by welding or electrical shorts frequently damage load cells and indicators. To prevent such damage, these isolators electrically separate the mechanical assembly from its tension-type load cell.

### PART NUMBER/PRICE

PART #	HEIGHT	THREAD SIZE	MAX. DIA	SAFE LOAD*	PRICE			
17722	3/8-16 NC	2.50	63.5 mm	2.50	63.5 mm	600 lb	272.2 kg	\$30.00
17724	1/2-13 NC	2.50	63.5 mm	2.50	63.5 mm	600 lb	272.2 kg	38.00
17726	1/2-20 NF	2.50	63.5 mm	2.50	63.5 mm	600 lb	272.2 kg	45.00
17725	1/2-13 NC	2.43	61.7 mm	2.00	50.8 mm	3000 lb	1360.8 kg	90.00
17723	3/8-24 NF	2.50	63.5 mm	2.50	63.5 mm	600 lb	272.2 kg	70.00
17728	1/2-13 NC x 1/2-20 NF	2.50	63.5 mm	2.50	63.5 mm	600 lb	272.2 kg	48.00
17732	1/4-20 NC	1.00	25.4 mm	1.12	28.4 mm	250 lb	113.4 kg	34.00

\*Do not exceed the safe load

# Threaded Adapters



## STANDARD FEATURES

- For coupling isolators with load cells and steelyard rods
- Supplied with jam nuts
- Now in stronger, more durable stainless steel

## PART NUMBER/PRICE

DRAWING DIMENSIONS											
PART #	A		B		C		D	E	SAFE LOAD*		PRICE
33561	—	—	—	—	2.00 in	50.8 mm	1/4-28 NF	1/4-28 NF	300 lb	136.1 kg	\$14.00
33562	0.94 in	23.9 mm	0.94 in	23.9 mm	2.00 in	50.8 mm	1/4-28 NF	1/4-20 NC	300 lb	136.1 kg	19.50
33563	0.92 in	23.3 mm	1.02 in	25.9 mm	2.06 in	52.3 mm	1/4-28 NF	3/8-24 NF	300 lb	136.1 kg	14.00
33564	0.94 in	23.9 mm	0.94 in	23.9 mm	2.00 in	50.8 mm	1/4-28 NF	3/8-16 NC	300 lb	136.1 kg	14.00
33565	1.06 in	26.9 mm	1.06 in	26.9 mm	2.25 in	57.2 mm	1/4-20 NC	3/8-16 NC	300 lb	136.1 kg	19.00
33567	1.06 in	26.9 mm	1.06 in	26.9 mm	2.25 in	57.2 mm	1/4-28 NF	1/2-13 NC	300 lb	136.1 kg	19.00
33568	—	—	—	—	2.00 in	50.8 mm	3/8-24 NF	3/8-24 NF	500 lb	226.8 kg	27.00
33569	0.91 in	23.1 mm	0.91 in	23.1 mm	2.00 in	50.8 mm	3/8-16 NC	3/8-24 NF	500 lb	226.8 kg	21.00
33570	1.06 in	26.9 mm	1.06 in	26.9 mm	2.25 in	57.2 mm	3/8-24 NF	1/2-13 NC	500 lb	226.8 kg	19.00
33571	1.31 in	33.3 mm	1.31 in	33.3 mm	2.75 in	69.9 mm	1/2-13 NC	5/8-11 NC	3000 lb	1360.8 kg	19.00
33572	0.87 in	22.0 mm	0.87 in	22.0 mm	2.00 in	50.8 mm	1/2-13 NC	1/2-20 NF	3000 lb	1360.8 kg	18.00
33573	—	—	—	—	2.06 in	52.3 mm	1/2-20 NF	1/2-20 NF	3000 lb	1360.8 kg	18.00
33574	1.31 in	33.3 mm	1.31 in	33.3 mm	2.75 in	69.9 mm	1/2-20 NF	5/8-11 NC	3000 lb	1360.8 kg	19.00
33575	1.31 in	33.3 mm	1.31 in	33.3 mm	3.00 in	76.2 mm	3/4-16 NF	3/4-10 NC	7000 lb	3175.2 kg	21.00

\*Do not exceed the safe load

Important: Read "Load Cell Mounting Hardware Safety Guidelines" at the beginning of this section.

# ITCM - Isolated Tension Cell Mount Hardware Kits

## ITCM - Isolated Tension Cell Mount Hardware Kits



Mount only - does not include load cell

The Isolated Tension Cell Mount ITCM is a mounting assembly designed for tension mounting S-beam load cells in suspended hopper assemblies and mechanical scale conversions. The ITCM incorporates clevis and unique rod end ball joint assemblies to reduce the overall length to less than half of the traditional tension cell mounts, while providing correct load alignment. In addition, the load cell is completely electrically isolated from stray currents, a major cause of load cell failure. To complete the design, a grounding strap connects the two clevis assemblies to further guarantee safety to your load cells.

### APPLICATIONS

- Suspended hoppers
- Mechanical scale conversions
- Replaces traditional eyebolt, isolator configurations
- Standard Features

### STANDARD FEATURES

- Provides greater safety than traditional/suspension configurations
- Complete package for ease of installation
- Built-in electrical isolation without having to use isolators (not available on 20,000 lb/9071.9 kg version)
- Provides correct load cell loading even in difficult installations
- Dramatically reduces overall length
- Capacities from 100 lb/45.4 kg to 20,000 lb/9071.9 kg
- Clevis mounts with nylon insulating washers
- PTFE-lined rod end ball joints (not available on 20,000 lb/9071.9 kg version)
- Completely isolates load cell from stray currents
- Grounding strap for electrical continuity
- Zinc plated clevis

## PART NUMBER/PRICE

PART #	LOAD RATING		CLEVIS THREAD	ROD END THREAD	*SAFELOAD		PRICE
<b>Mild Steel:</b>							
17968	300 lb	136.1 kg	3/8-16	3/8-24	300 lb	136.1 kg	\$185.00
17969	300 lb	136.1 kg	1/2-13	3/8-24	300 lb	136.1 kg	185.00
17894	500 lb	226.8 kg	3/8-16	1/4-28	500 lb	226.8 kg	185.00
17895	500 lb	226.8 kg	1/2-13	1/4-28	500 lb	226.8 kg	185.00
17896	2000 lb	907.2 kg	1/2-13	1/2-20	2000 lb	907.2 kg	210.00
17897	2500 lb	1134.0 kg	5/8-11	1/2-20	2500 lb	1134.0 kg	210.00
17898	4000 lb	1814.4 kg	3/4-10	1/2-20	4000 lb	1814.4 kg	210.00
17899	5000 lb	2268.0 kg	3/4-10	3/4-16	5000 lb	2268.0 kg	270.00
17900	10,000 lb	4535.9 kg	1-8	3/4-16	10,000 lb	4535.9 kg	270.00
17958	†15,000 lb	6803.9 kg	1 1/4-7	1-12	15,000 lb	6803.9 kg	1,015.00
63166	††15,000 lb	6803.9 kg	1 1/4-7	1-14	15,000 lb	6803.9 kg	955.00
17959	**20,000 lb	9071.9 kg	1 1/2-6	1 1/4-12	20,000 lb	9071.9 kg	915.00
<b>Stainless Steel:</b>							
33630	500 lb	226.8 kg	3/8-16	3/8-24	500 lb	226.8 kg	415.00
33631	300 lb	136.1 kg	1/2-13	3/8-24	300 lb	136.1 kg	415.00
33632	500 lb	226.8 kg	3/8-16	1/4-28	500 lb	226.8 kg	415.00
33633	500 lb	226.8 kg	1/2-13	1/4-28	500 lb	226.8 kg	415.00
33634	2000 lb	907.2 kg	1/2-13	1/2-20	2000 lb	907.2 kg	515.00
33635	2500 lb	1134.0 kg	5/8-11	1/2-20	2500 lb	1134.0 kg	515.00
33636	3000 lb	1360.8 kg	3/4-10	1/2-20	3000 lb	1360.8 kg	515.00
33637	5000 lb	2268.0 kg	3/4-10	3/4-16	5000 lb	2268.0 kg	915.00

Hardware kits do not include load cell

\*Do not exceed the safe load \*\* Not electrically isolated

† For use with RL20000-15,000 lb load cell †† For use with RL20001-15,000 lb load cell

Important: Read "Load Cell Mounting Hardware Safety Guidelines" at the beginning of this section.

Note: Replacement parts for mounts can be in the Replacement Parts Catalog.



# Grounding Strap/Ball and Load Receiver Plate

## Grounding Strap



Important: Read "Load Cell Mounting Hardware Safety Guidelines" at the beginning of this section.

## STANDARD FEATURES

- Used in the ITCM assembly
- Tinned copper braid
- Crimped sleeve on ends with .25 in (6.4 mm) hole
- Available in 12 in (304.8 mm), 14 in (355.6 mm), 16 in (406.4 mm), 24 in (609.6 mm) or 32 in (812.8 mm) lengths

## PART NUMBER/PRICE

PART #	LENGTH		PRICE
17778	12 in	(304.8 mm)	\$10.25
17779	14 in	(355.6 mm)	12.00
17780	16 in	(406.4 mm)	13.00
17781	24 in	(609.6 mm)	13.25
17782	32 in	(812.8 mm)	21.50

## Load Receiver Plate

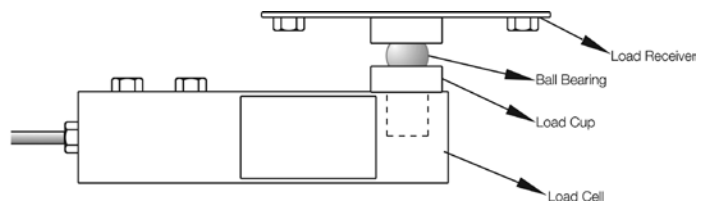
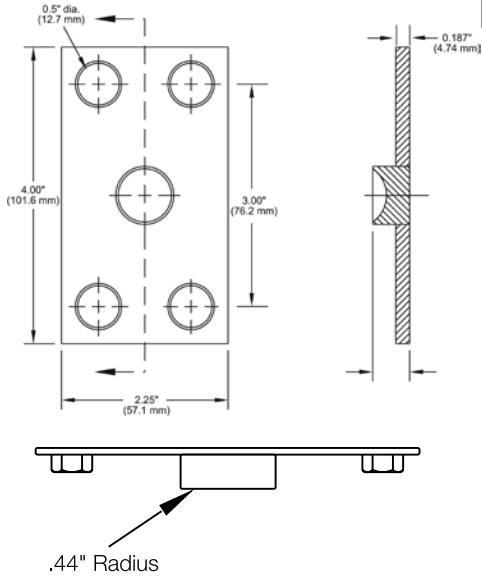


## STANDARD FEATURES

- Design offers accurate point loading
- Self-centering effect built in
- Ease of manufacture for custom applications
- Use with load cup and ball bearings to build a custom scale
- Ball and cup load introduction provides point loading for maximum accuracy
- Stainless steel construction

## PART NUMBER/PRICE

PART #	DESCRIPTION	PRICE
18832	Load receiver plate	\$45.00 each



## Ball Bearings/Load Cups

### Ball Bearings



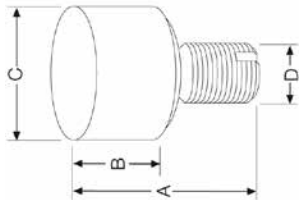
### STANDARD FEATURES

- Use with load cup and load receiver to build a custom scale
- 52100 chrome alloy steel

### PART NUMBER/PRICE

PART #	DRAWING DIMENSIONS	PRICE
18815	5/8 in diameter crush strength 32,000 lbs	\$10.00
18816	7/8 in diameter crush strength 59,000 lbs	12.00
65841	1.25 in diameter crush strength 100,00 lbs	22.00

### Load Cups



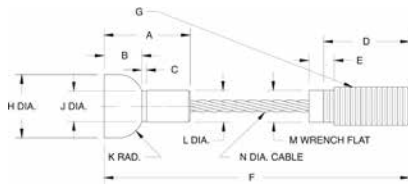
### STANDARD FEATURES

- Ball and cup load introduction provides point loading for maximum accuracy
- For use with most popular single-ended beams

### PART NUMBER/PRICE

PART #	A	B	C	D	PRICE			
31911	1.70 in	43.2 mm	0.54 in	13.7 mm	1.07 in	27.2 mm	1/2-20 NF	\$41.00
33654	1.12 in	28.4 mm	0.54 in	13.7 mm	0.78 in	19.8 mm	1/2-20 NF	27.00
33653	1.50 in	38.1 mm	0.80 in	20.3 mm	1.12 in	28.4 mm	3/4-16 NF	29.00
33652	2.00 in	50.8 mm	0.85 in	21.6 mm	1.75 in	44.5 mm	1-12 NF	75.00
33651	2.85 in	72.4 mm	0.85 in	21.6 mm	1.75 in	44.5 mm	1-12 NF	105.00
33650	2.85 in	72.4 mm	0.85 in	21.6 mm	1.75 in	44.5 mm	1-14 NF	105.00
33647	2.75 in	69.9 mm	0.50 in	12.7 mm	0.75 in	19.1 mm	1/2-20 NF	35.00
72364	1.78 in	45.2 mm	0.53 in	13.4 mm	0.78 in	19.8 mm	1/2-20 NF	50.00
69431	Replacement cup for Cardinal SCA-50 K load cell							52.00

# Cardinal Wire Rope Replacement Assemblies



Part # 17767 EL209

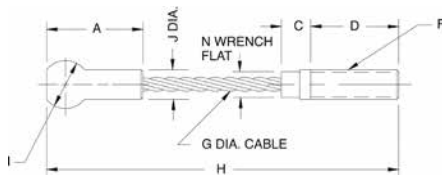


## CARDINAL® WIRE ROPE REPLACEMENT ASSEMBLIES

- EL208 Cardinal wire rope assembly. Used on 7500 lb (3402.0 kg) capacity FH model and 8000 lb (3628.7 kg) capacity EP model.
- EL209 Cardinal wire rope assembly. Used on 20,000 lb (9071.9 kg) capacity FH and EP models. May also be used on 15,000 lb (6803.9 kg) capacity FH and EP models.

## CUSTOM WIRE ROPES

- Custom wire ropes are available for your specific applications
- When ordering, please supply us with the specifications listed at right, a sample if possible, the required tension rating and total capacity



Part # 17763 EL208



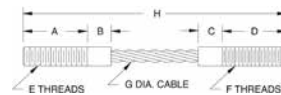
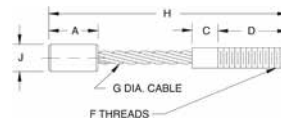
## PART NUMBER/PRICE

PART #	A	B	C	D	E	F	G	H	I	J	K	L & M	N	PRICE
17763	1.50 in	-	0.50 in	1.50 in	-	1/2-13 NC in	0.25 in	6.00 in	0.81 in	0.43 in	-	-	0.43 in	\$65.00
	38.1 mm	-	12.7 mm	38.1 mm	-	-	6.4 mm	152.4 mm	20.6 mm	10.9 mm	-	-	10.9 mm	
17767	1.71 in	0.75 in	0.09 in	2.00 in	0.43 in	6.31 in	3/4-10 UNC-2A in	1.25 in	-	0.60 in	0.50 in	0.625 in	0.375 in	95.00
	43.4 mm	19.1 mm	2.3 mm	50.8 mm	10.9 mm	160.3 mm		31.8 mm	-	15.2 mm	12.7 mm	15.9 mm	9.5 mm	

Important: Read "Load Cell Mounting Hardware Safety Guidelines" at the beginning of this section.

## WIRE ROPE ASSEMBLIES

- Wire rope assemblies provide better alignment and greatly increase load cell repeatability. In addition, they act as natural vibration dampeners.



## DIMENSIONS

PART #	A	B & C	D	E	F	G	H	SAFE LOAD*	PRICE
17760	0.87 (22.1)	0.50 (12.7)	0.87 (22.1)	1/4-20 NC-2A	1/4-28 NF-2A	0.12 (3.1)	4.00 (101.6)	400 lb (181.4 kg)	\$35.00
17762	1.25 (31.8)	0.50 (12.7)	1.25 (31.8)	3/8-16 NC-2A	3/8-24 NF-2A	0.18 (4.6)	5.00 (127.0)	850 lb (385.6 kg)	51.00
17766	1.62 (41.1)	0.50 (12.7)	1.62 (41.1)	1/2-13 NC-2A	1/2-20 NF-2A	0.25 (6.4)	6.50 (165.1)	1400 lb (635.0 kg)	51.00
17765	1.62 (41.1)	0.50 (12.7)	1.62 (41.1)	1/2-13 NC-2A	1/2-20 NF-2A	0.25 (6.4)	5.50 (139.7)	1400 lb (635.0 kg)	65.00
17764	1.00 (25.4)	-	1.37 (34.8)	1/2-20 NF-2A	1/2-20 NF-2A	0.25 (6.4)	4.00 (101.6)	1400 lb (635.0 kg)	60.00
17768	2.00 (50.8)	-	2.50 (63.5)	3/8-24 NF-2A	3/8-24 NF-2A	0.12 (3.1)	5.50 (139.7)	400 lb (181.4 kg)	125.00
17769**	1.25 (31.8)	-	0.75 (19.1)	1/4-28 NF-2A	1/4-28 NF-2A	0.12 (3.1)	3.00 (76.2)	400 lb (181.4 kg)	78.00
17771**	1.25 (31.8)	-	0.75 (19.1)	1/2-20 NF-2A	1/2-20 NF-2A	0.25 (6.4)	3.00 (76.2)	1400 lb (635.0 kg)	60.00
115292***	1.25 (31.8)	-	0.75 (19.1)	1/4-28 NF-2A	1/4-28 NF-2A	0.12 (3.1)	3.00 (76.2)	400 lb (181.4 kg)	80.00

\*Do not exceed the safe load

\*\*Used with Rice Lake Weighing Systems Flexure Bases

\*\*\*Stainless Steel

# Custom Wire Rope Definition

Customer's Name: \_\_\_\_\_

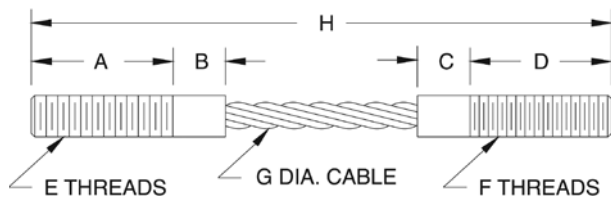
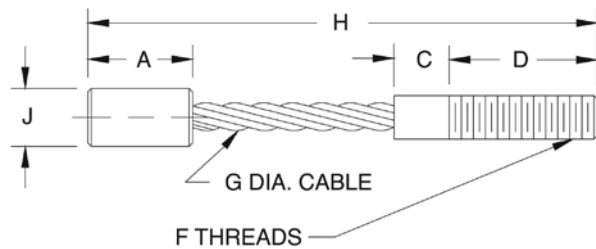
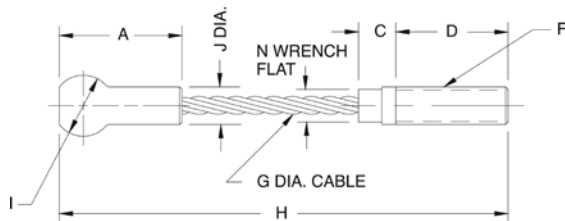
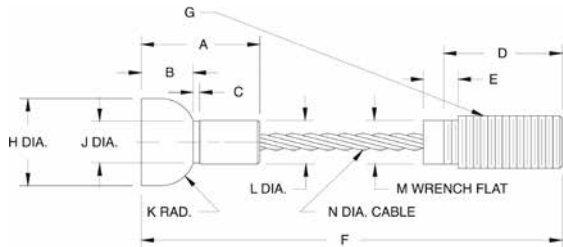
Contact Person: \_\_\_\_\_

Date: \_\_\_\_\_

Application: \_\_\_\_\_

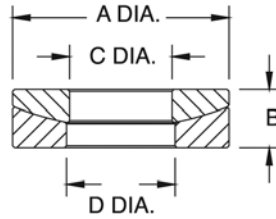
WIRE ROPE*		
A Thread Length	F Threads	K Safe Load
B Shank Length	G Rope Diameter	L Environment
C Shank Length	H Overall Length	M Application
D Thread Length	I Ball Diameter	
E Threads	J Shank Diameter	

\*Use drawings below for reference



# Spherical Washer Sets/Weldless End Links

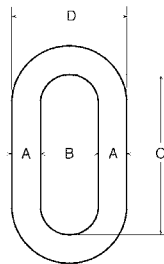
## Spherical Washer Sets



## PART NUMBER/PRICE

PART #	BOLT SIZE	A	B	C	D	PRICE
<b>Mild Steel:</b>						
15196	0.25 in	6.4 mm	0.62 in	15.8 mm	0.20 in	\$8.75
15197	0.38 in	9.7 mm	0.88 in	22.4 mm	0.25 in	10.75
15198	0.50 in	12.7 mm	1.12 in	28.5 mm	0.31 in	11.25
15199	0.62 in	15.8 mm	1.38 in	35.1 mm	0.31 in	12.25
15200	0.75 in	19.1 mm	1.62 in	41.1 mm	0.38 in	18.50
15201	1.00 in	25.4 mm	2.00 in	50.8 mm	0.50 in	29.00
15202	1.25 in	31.8 mm	2.62 in	66.6 mm	0.50 in	60.00
15203	1.50 in	38.1 mm	2.88 in	73.2 mm	0.53 in	66.00
15205	2.00 in	50.8 mm	3.88 in	98.6 mm	0.81 in	100.00
<b>Stainless Steel:</b>						
33218	0.50 in	12.7 mm	1.12 in	28.5 mm	0.31 in	18.00
33220	0.75 in	19.1 mm	1.62 in	41.1 mm	0.38 in	28.00

## Weldless End Links



## STANDARD FEATURES

- Self colored or hot-dip galvanized
- Forged carbon steel—quenched and tempered

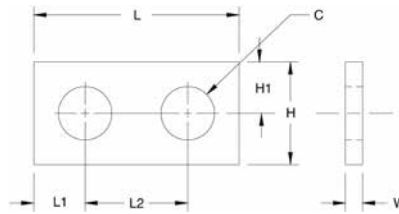
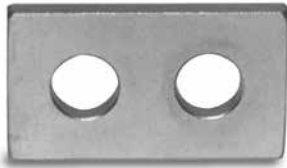
## PART NUMBER/PRICE

PART #	A	B	C	D	SAFE LOAD*	PRICE
F312L	0.625 in	15.9 mm	1.00 in	25.4 mm	9300 lb	\$35.00
17810	0.875 in	22.2 mm	2.00 in	50.8 mm	12,000 lb	140.00
21911	1.00 in	22.2 mm	2.25 in	57.2 mm	15,200 lb	275.00
65430	1.25 in	31.8 mm	2.50 in	63.5 mm	26,400 lb	116.00
21912	1.375 in	34.9 mm	2.75 in	69.9 mm	30,000 lb	415.00

\*Do not exceed the safe load

# Load Cell Spacers/Load Buttons/Load Button Insert Kit

## Load Cell Spacers



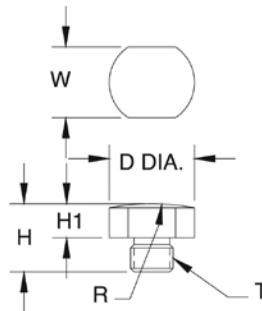
## STANDARD FEATURES

- Use with most popular single-ended beams
- Provides flat mounting surface required for optimum load cell performance
- Zinc-plated mild steel or stainless steel

## PART NUMBER/PRICE

PART#	C	H	H1	L	L1	L2	W	PRICE							
<b>Mild Steel:</b>															
17754	0.53 in	13.4 mm	1.25 in	31.8 mm	0.62 in	15.7 mm	2.25 in	57.2 mm	0.62 in	15.7 mm	1.00 in	25.4 mm	0.25 in	6.4 mm	\$20.00
17755	0.78 in	19.8 mm	1.50 in	38.1 mm	0.75 in	19.1 mm	3.00 in	76.2 mm	0.75 in	19.1 mm	1.50 in	38.1 mm	0.25 in	6.4 mm	20.25
17756	1.03 in	26.2 mm	2.00 in	50.8 mm	1.00 in	25.4 mm	4.00 in	101.6 mm	1.00 in	25.4 mm	2.00 in	50.8 mm	0.25 in	6.4 mm	21.25
18260	0.53 in	13.4 mm	1.25 in	31.8 mm	0.62 in	15.7 mm	2.25 in	57.2 mm	0.62 in	15.7 mm	1.00 in	25.4 mm	0.37 in	9.4 mm	23.00
<b>Stainless Steel:</b>															
17757	0.78 in	19.8 mm	1.50 in	38.1 mm	0.75 in	19.1 mm	3.00 in	76.2 mm	0.75 in	19.1 mm	1.50 in	38.1 mm	0.25 in	6.4 mm	28.00
18383	0.53 in	13.4 mm	1.25 in	31.8 mm	0.62 in	15.7 mm	2.25 in	57.2 mm	0.62 in	15.7 mm	1.00 in	25.4 mm	0.37 in	9.4 mm	24.00
18411	0.53 in	13.4 mm	1.25 in	31.8 mm	0.62 in	15.7 mm	2.25 in	57.2 mm	0.62 in	15.7 mm	1.00 in	25.4 mm	0.25 in	6.4 mm	23.00

## Load Button



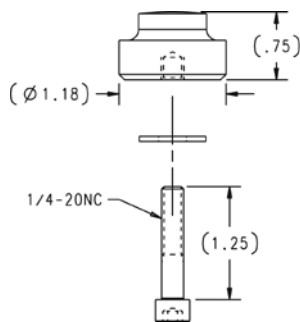
## STANDARD FEATURES

- Suitable for use with compression mounting assemblies, canisters, S-beams and single-ended beams
- Hardened alloy steel

## PART NUMBER/PRICE

PART#	T	D	H	H1	R	W	PRICE					
17750	3/8-24UNF	0.75 in	19.1 mm	0.60 in	15.2 mm	0.30 in	7.6 mm	2.00 in	50.8 mm	0.63 in	16.0 mm	\$26.00
17751	1/2-20UNF	0.75 in	19.1 mm	0.70 in	17.8 mm	0.30 in	7.6 mm	4.00 in	101.6 mm	0.63 in	16.0 mm	20.25
17752	3/4-16UNF	1.50 in	38.1 mm	0.90 in	22.9 mm	0.30 in	7.6 mm	6.00 in	152.4 mm	1.25 in	31.8 mm	37.00

## Load Button Insert Kit



## STANDARD FEATURES

- To be used with RLSSB and RTISSB load cells (1 k-5k)
- Hardened alloy steel

## PART NUMBER/PRICE

PART#	DESCRIPTION	PRICE
26112	Load button insert kit	\$27.00

# Leveling Mount/Mounting Plates

## Leveling Mount



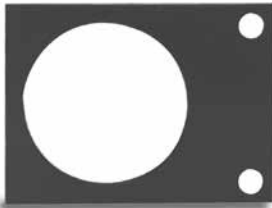
### STANDARD FEATURES

- Designed for use with some floor scales or machinery platforms.
- Can be used as a replacement foot on the “SP” floor scale to limit vibrations transmitted to the scale through the floor
- Provides vibration isolation on most portable platforms

### PART NUMBER/PRICE

PART #	THREAD SIZE	HEIGHT	DIAMETER	PRICE
18819	1/2-13NC	1.81 in	5.00 in	\$100.00

## RoughDeck® Scale Base Mounting Plates

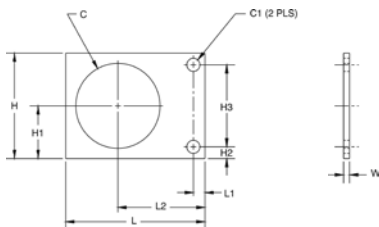


### STANDARD FEATURES

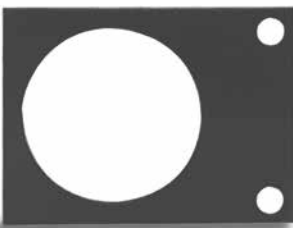
- Secures RoughDeck® and other popular floor scales
- Prevents movement in horizontal plane
- Useful with Surefoot™ and other load cell foot assemblies
- Available in stainless steel and mild steel

### PART NUMBER/PRICE

PART #	MTL.	C	C1	H	H1	H2	PRICE
19075	MS	3.62 in	0.56 in	4.50 in	2.25 in	0.50 in	\$15.00
19076	SS	3.62 in	0.56 in	4.50 in	2.25 in	0.50 in	18.00



## Summit® 3000 Scale Base Mounting Plates

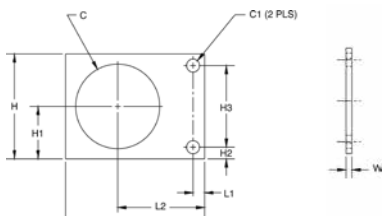


### STANDARD FEATURES

- Mounting plate for Summit® 3000 floor scales
- Available in mild steel painted green

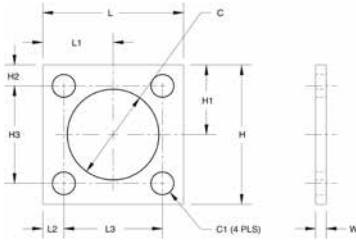
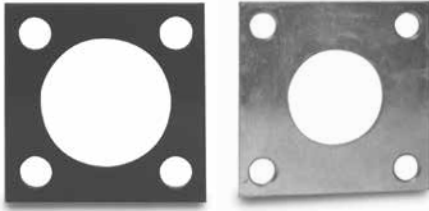
### PART NUMBER/PRICE

PART #	MTL.	C	C1	H	H1	PRICE
76149	MS	3.19 in	0.56 in	4.50 in	2.25 in	\$15.00



# Mounting Plates/Leveling Pad Stems

## Floor Scale Mounting Plates



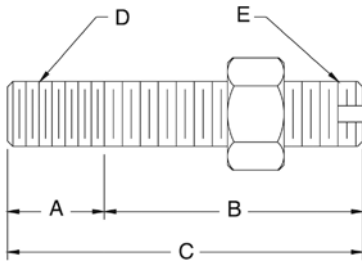
## STANDARD FEATURES

- Suitable for use with leveling pads
- Generic mounting plate for popular floor scales
- Fits most floor scale foot assemblies
- Available in stainless steel and mild steel (mild steel parts are zinc plated/painted)

## PART NUMBER/PRICE

PART #	C	C1	H	H1	H2	H3	PRICE
<b>Mild Steel:</b>							
18737	2.00 in	0.53 in	4.00 in	2.00 in	0.50 in	3.00 in	\$8.00
18738	3.25 in	0.81 in	5.00 in	2.50 in	0.75 in	3.50 in	9.00
<b>Stainless Steel:</b>							
18751	2.00 in	0.53 in	4.00 in	2.00 in	0.50 in	3.00 in	32.00

## Leveling Pad Stems



## STANDARD FEATURES

- For use with leveling pads
- One jam nut included

## PART NUMBER/PRICE

PART #	A	B	C	D	E	SLOT	MATERIAL	PRICE		
<b>Mild Steel:</b>										
17693	0.75 in	19.1 mm	2.00 in	50.8 mm	2.75 in	69.9 mm	3/4-10 NC / 3/4-16 NF	NO	1045	\$14.50
<b>Stainless Steel:</b>										
17689	0.50 in	12.7 mm	1.50 in	38.1 mm	2.00 in	50.8 mm	1/2-13 NC / 1/2-20 NF	YES	SS	14.50
17695	0.75 in	19.1 mm	2.00 in	50.8 mm	2.75 in	69.9 mm	3/4-10 NC / 3/4-16 NF	NO	SS	27.00

Used in conjunction with Leveling Pad on page 371

Warning: Do not use to suspend a load



## Cable Splicing Kits

### EL214 Cable Splicing Kit



#### STANDARD FEATURES

- Designed for a complete, professional transducer cable splice
- Prevents moisture from entering the load cell through the cable connector

*Each kit contains a high-impact plastic splicing box, liquid-tight cable fittings, circuit card, PTFE sleeving, pre-measured potting compound and complete instructions*

#### SPECIFICATIONS

**Dimensions:**  
3.00 W x 1.00 H x 1.50 in D  
(76.2 W x 25.4 H x 38.1 mm D)

**Mounting Centers:**  
2.50 in (63.5 mm)

**Number of Connections:**  
7

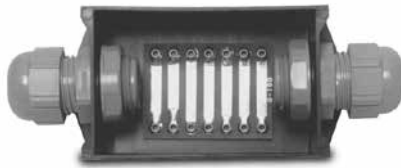
**Cable Diameter:**  
0.187-0.312 in (4.7-7.9 mm)

**Cure Time For Potting:**  
Epoxy-Polyamide resin cures in 2 hours at 73°F (23°C)

#### PART NUMBER/PRICE

PART #	DESCRIPTION	PRICE
15485	EL214	\$115.00

### EL214T Cable Splicing Kit



#### STANDARD FEATURES

- Designed to accommodate cables larger than the EL214; all other dimensions and performance features are the same

#### SPECIFICATIONS

**Dimensions:**  
3.00 W x 1.00 H x 1.50 in D  
(76.2 W x 25.4 H x 38.1 mm D)

**Mounting Centers:**  
2.50 in (63.5 mm)

**Number of Connections:**  
7

**Cable Diameter:**  
0.270-0.480 in (6.9-12.2 mm)

**Cure Time For Potting:**  
Epoxy-Polyamide resin cures in 2 hours at 73°F (23°C)

#### PART NUMBER/PRICE

PART #	DESCRIPTION	PRICE
15486	EL214T	\$125.00

### EL215 Cable Splicing Kit



#### STANDARD FEATURES

- Designed for use in weather-exposed or direct-burial locations
- Each kit contains plastic splicing tube, circuit board, insulating resin and instructions

#### SPECIFICATIONS

**Dimensions:**  
1.375 dia x 6.0 in long (34.9 dia x 152.4 mm long)

**Number of Connections:**  
7

**Cable Diameter:**  
up to .75 in (19.1 mm)

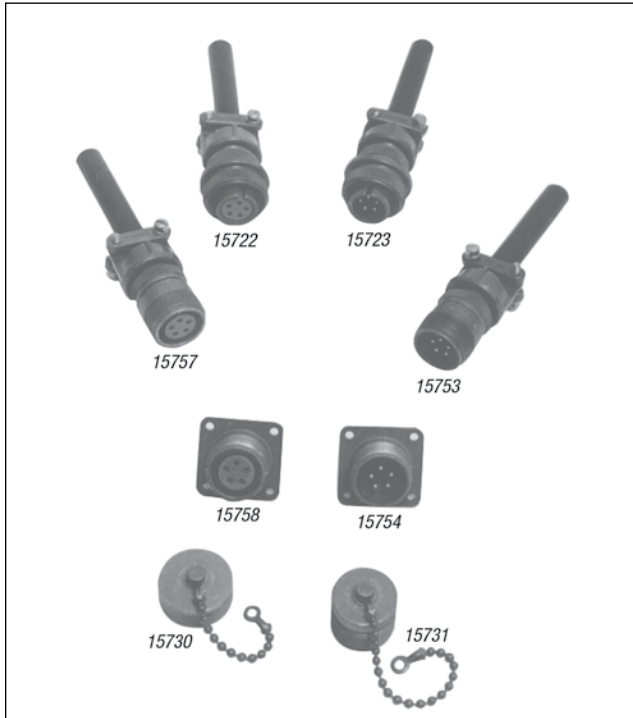
**Cure Time For Potting:**  
2 hours at 70°F (21°C)

#### PART NUMBER/PRICE

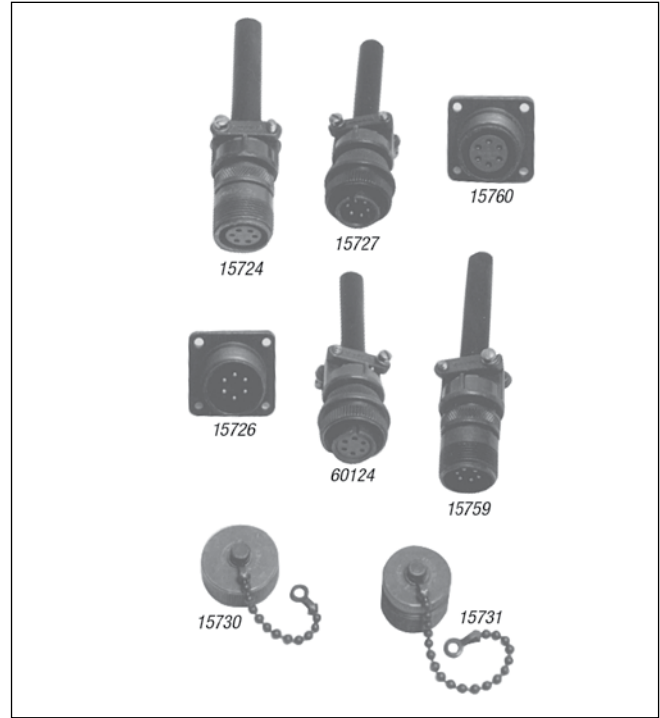
PART #	DESCRIPTION	PRICE
15612	EL215	\$65.00

## Connectors/Shell Plugs/Receptacles

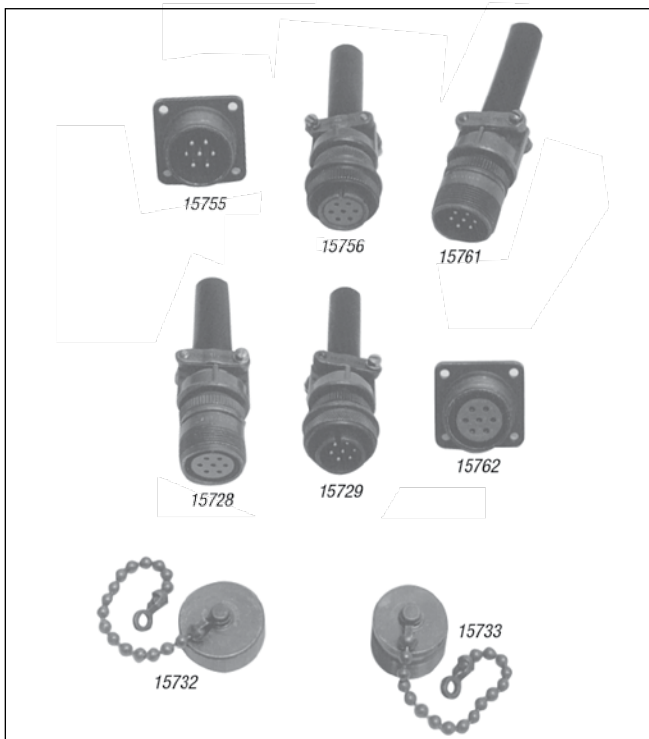
### 5-POSITION CONNECTORS, SHELL PLUGS, RECEPTACLES



### 6-POSITION CONNECTORS, SHELL PLUGS, RECEPTACLES



### 7-POSITION CONNECTORS, SHELL PLUGS, RECEPTACLES



### PART NUMBER/PRICE

PART #	DESCRIPTION	PRICE
15753	5-Pin, external thread	\$28.00
15722	5-socket, internal thread	29.00
15723	5-Pin, internal thread	28.00
15757	5-socket, external thread	34.00
15754	5-Pin chassis mount, external thread	20.00
15758	5-socket chassis mount, external thread	20.00
15730	Dust cap for ext. thread 5-position connector	11.00
15731	Dust cap for int. thread 5-position connector	15.00
15759	6-Pin, external thread, male	28.00
60124	6-socket, internal thread connector, female fits Toledo load cells, Condec indicators	24.00
15727	6-Pin, internal thread, male	27.00
15724	6-socket, external thread	31.00
15726	6-Pin chassis mount, external thread	20.00
15760	6-socket chassis mount, external thread	19.00
15730	Dust cap for ext. thread 6-position connector	11.00
15731	Dust cap for int. thread 6-position connector	15.00
15761	7-Pin, external thread	29.00
15756	7-socket, internal thread	31.00
15729	7-Pin, internal thread	31.00
15728	7-socket, external thread	31.00
15755	7-Pin chassis mount, external thread	20.00
15762	7-socket chassis mount, external thread	23.00
15732	Dust cap for ext. thread 7-position connector	16.00
15733	Dust cap for int. thread 7-position connector	20.00

## Scale Veils



Protect your electronic scales, weight indicators and printers with a scale veil. Reduce costly repairs and down time due to moisture penetrating through instrument enclosures during cleanup or operation.

### STANDARD FEATURES

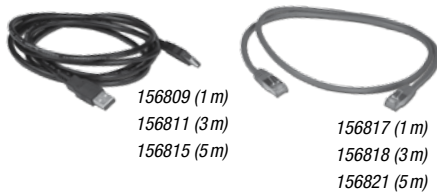
- Tough, flexible transparent vinyl, constructed with heavy-duty stitching
- Available for most types of scale equipment
- Loose fit allows for operation of switches or controls through the scale veil

### PART NUMBER/PRICE

MODEL	PART #	PRICE
<b>RICE LAKE</b>		
SP2000/SP2200	21210	\$75.00
<b>EPSON</b>		
TM290/295	29582	55.00
TM-U200 TM-U220	35666	60.00
TM-U590	111840	65.00
<b>OKIDATA</b>		
Okidata 184 Turbo Printer	21208	65.00
Okidata 320/390	21226	65.00

*Custom veils and specials available; consult factory.*

# Cables



156809 (1 m)  
156811 (3 m)  
156815 (5 m)

156817 (1 m)  
156818 (3 m)  
156821 (5 m)



156806 (1 m)  
156807 (3 m)  
156808 (5 m)

## PART NUMBER/PRICE

PART #	DESCRIPTION	PRICE
<b>Interface Cables for SP-2200, TM-U295, TM-U590 and Star® Printers</b>		
15547	Blunt end, 25-Pin D-sub male RS-232 serial interface cable	\$65.00
15548	25-Pin D-sub male to 25-Pin D-sub male 20 mA serial interface cable (SP2200 only)	65.00
15568	25-Pin D-sub male to 25-Pin D-sub male RS-232 serial interface cable	65.00
Consult	Custom 20 mA/RS-232 serial interface cable	110.00
<b>Interface Cables for I-Class</b>		
15547	Blunt end, 25-Pin D-sub male RS-232 serial interface cable	65.00
Consult	Custom RS-232 interface cable	110.00
<b>Interface Cables for Eltron Desktops, E-4203 and M-4206</b>		
41276	DB9 male RS-232 cable to blunt end	65.00
<b>Straight Cable</b>		
50749	DB9 female to DB9 female	55.00
41279	DB25 male to DB9 male	65.00
70056	DB9M to DB9F	35.00
<b>Null Modem Cable</b>		
66535	DB9F to DB9F, Null modem	45.00
64794	DB9F to DB9M, Null modem, 6ft	45.00
<b>USB Cable</b>		
79074	USB-A to USB-B	30.00
72704	USB to 9-Pin Male RS-232 adapter	80.00
156806	USB 2.0 A to A, 1 m	30.00
156807	USB 2.0 A to A, 3 m	45.00
156808	USB 2.0 A to A, 5 m	55.00
156809	USB 2.0 to USB-B male type A	45.00
156815	USB 2.0 to USB-B male stype A to male type B micro, 3 m	50.00
156811	USB 2.0 to USB-B male stype A to male type B micro, 5 m	65.00
156817	EtherNet TCP/IP CAT.5E RJ45 1 m	30.00
156818	EtherNet TCP/IP CAT.5E RJ45 3 m	37.00
156821	EtherNet TCP/IP CAT.5E RJ45 5 m	45.00
<b>Ethernet Cable/RJ45</b>		
72697	RJ45 to RJ45, 7 ft	35.00
78860	RJ45 to RJ45, cross over 7 ft	35.00
75594	RJ45 to 9-Pin female	65.00

Blunt-end cables interface to: UMC444, UMC555, UMC600, IQ700, IQ plus® 310A, IQ plus® 355, IQ plus® 390-DC, IQ plus® 510, IQ plus® 590-DC, IQ plus® 710, IQ plus® 800, and IQ plus® 810, 520 and 920i

Custom cables are designed to interface with your specific equipment. Please specify equipment model number and connector type. Standard cable length is 5 ft (1.5 m).

## Static Brushes/Ionizing Strips and Accessories



### STATIC BRUSHES

PART #	STATICMASTER PART #	DESCRIPTION	PRICE
76669	1C200	Static Brush 1 in	\$131.00
76670	1C200R	Replacement cartridge	85.00

### STATIC BRUSHES

PART #	STATICMASTER PART #	DESCRIPTION	PRICE
76671	3C500	Static Brush 3 in	\$199.00
76672	3C500R	Replacement cartridge	134.00

### IONIZING STRIPS

PART #	STATICMASTER PART #	DESCRIPTION	PRICE
76677	1U400	Ionizing unit 1 in x 1 in	\$134.00
76678	1U200	Ionizing unit 1 in x 1 in	85.00

### IONIZING STRIPS

PART #	STATICMASTER PART #	DESCRIPTION	PRICE
76676	2U500	Ionizing unit 1 in x 3 in	\$134.00

### IONIZING STRIP ACCESSORIES

PART #	STATICMASTER PART #	DESCRIPTION	PRICE
76679	BF1	Ionizer Positioner	\$69.00
76680	BF2	Ionizer Positioner Only - C Bracket	98.00

## Table/Floor Mat/Static Control Wrist Strap/Static Shielding Bags

### Static Control Table Mat and Floor Mat



An absolute must for every workbench, this kit includes a 3-layer 2 ft x 4 ft table mat, 4 ft x 6 ft floor mat, ground cord and adjustable wrist strap. Designed specifically for energized circuit work, the static control table and floor mat provide superior protection against ESD.

#### PART NUMBER/PRICE

PART #	DESCRIPTION	PRICE
34265	Static Control Table Mat & Floor Mat	\$825.00

### Static Control Wrist Strap



The single most important personal accessory for protecting ESD-sensitive components and circuits, this wrist strap protects against charges from the body. The wrist strap consists of a comfortable elastic cuff or band and a detachable conductive cord for grounding the wrist band.

#### PART NUMBER/PRICE

PART #	DESCRIPTION	PRICE
34263	Static Control Wrist Strap	\$50.00

### Static Shielding Bags



This static shield bag offers total ESD protection, whether you're transporting ESD-susceptible products across the room or across the country. The outer layer of the bag consists of an abrasion-resistant polyester, while the antistatic polyethylene inner layer retards triboelectric static charging from inside the bag.

#### PART NUMBER/PRICE

PART #	DESCRIPTION	PRICE
16150	Static Shielding Bags, 8 in x 10 in	\$1.10 each
16151	Static Shielding Bags, 12 in x 18 in	3.25 each