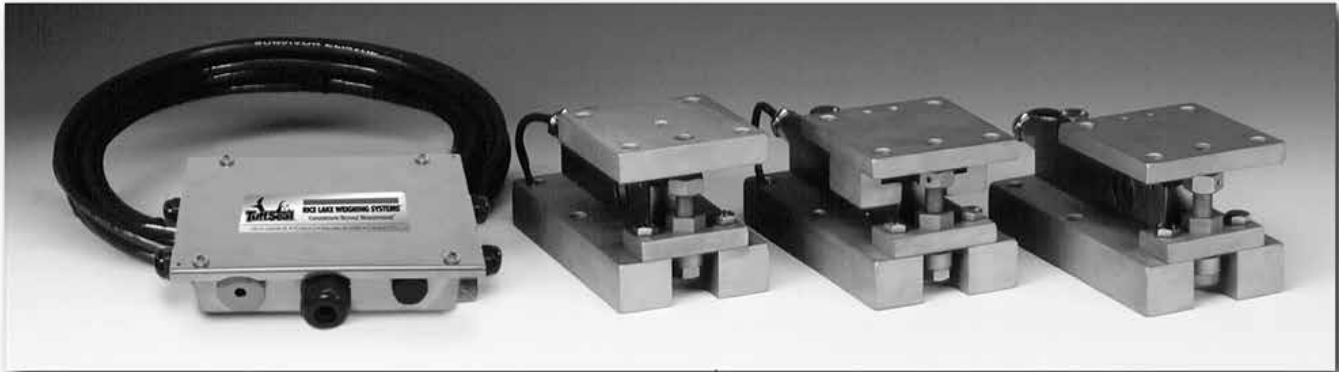


SURVIVOR Paramounts® HE Medium-Capacity Weigh Module Systems



Picture is a representation of actual product

Consisting of three different weigh module designs, the Paramounts system offers superior accuracy, even in applications with extreme expansion, contraction and vibration. The fixed-pin module acts as the vessel's primary reference point, enabling rotation. A single side-stop module is then paired with the fixed-pin module to permit mechanical expansion and contraction in one direction. The vessel then becomes a high-accuracy weighing system with the addition of one to six free-sliding modules. This system offers the free motion necessary to eliminate unwanted mechanical side loads, as well as the strength needed to keep the vessel in check. This gives the Paramounts system its industry-leading reputation for exceptional accuracy in unfriendly environments.

Integral jacking/shipping bolts enhance safety by preventing accidental lift-off, facilitate quick field removal of load cells and eliminate load cell damage during transportation. Matched outputs and field-replaceable cable simplify installation and enhance serviceability. As a system, Paramounts represent the ultimate combination of convenience, accuracy and control.

STANDARD FEATURES

- Capacities (per module): 520 lb-22,500 lb (2.3 kN/102.1 kg-100 kN/10,205.9 kg)
- All stainless steel construction
- Bolt-in-place design; module bolts directly to tank leg without requiring additional load buttons or mounting plates
- Hermetically sealed stainless steel load cells
- Load cell outputs are matched to $\pm 0.07\%$, minimizing maintenance costs
- Unique design allows for thermal expansion/contraction
- Low-profile, self-checking design
- Jacking screw allows empty vessel to be lifted clear of load cell for maintenance
- Unique patented blind load hole technology minimizes unwanted side and eccentric loading
- Vessel is free to slide laterally on PTFE-coated surfaces
- Two-year limited warranty

APPLICATIONS

- Medium-capacity, high-vibration mixers, blenders and tanks in temperature extremes
- Chemical batching/blending
- Pharmaceutical processing
- Food processing
- Petroleum refining and batching

OPTIONAL FEATURES

- NTEP Certified load cells available: capacities 1125-11,250 lb
- OIML-certified load cells available: capacities 1125-11,250 lb

COMPLETE KIT INCLUDES

- 1 JB4SS NEMA 4X stainless steel signal trim junction box
- 1 fixed-pin module, 1 side-stop module, and 1 or 2 free-sliding assemblies. Each module is complete with a FLINTEC SB4 or SB10 (520 lb) stainless steel hermetically sealed load cell (see pages 215, 219)
- 25' of our Hostile Environment EL147HE SURVIVOR® load cell cable

LOAD CELL CERTIFICATIONS

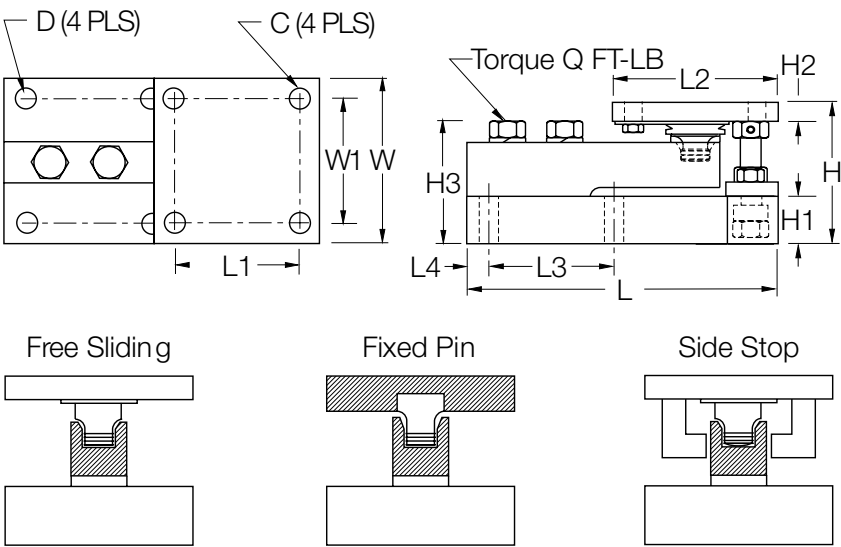


NOTE: Check with your local Weights & Measure officials for suitability in Legal for Trade applications..

Central Carolina Scale, Inc
5393 Farrell Road
Sanford NC 27330

Call: 919-776-7737
Email: info@ccscale.com

SURVIVOR Paramounts® HE Medium-Capacity Weigh Module Systems



DIMENSIONS

RATED CAPACITY	C	D	H	H1	*H2	**H2	H3	L	L1	L2	L3	L4	W	W1	Q (FT- LB)
lb/inches															
520 (2.3 kN)	.375	.437	3.49	1.00	.50	.75	2.98	7.51	3.00	4.00	3.00	.50	4.00	3.00	65
1125-5200 (5-23 kN)	.437	.437	3.58	1.25	.50	.75	3.06	7.51	3.00	4.00	3.00	.50	4.00	3.00	65
11,250 (50 kN)	.562	.562	4.66	1.50	.62	1.00	4.09	9.19	3.87	5.00	3.87	.56	5.00	3.87	295
22,500 (100 kN)	.688	.688	6.41	2.00	.75	1.25	5.73	11.46	4.75	6.00	4.75	.69	6.00	4.75	515
kg/mm															
236.1	9.5	11.1	88.6	25.4	12.7	19.1	75.7	190.8	76.2	101.6	76.2	12.7	101.6	76.2	
510.8-2360	11.1	11.1	90.9	31.8	12.7	19.1	77.7	190.8	76.2	101.6	76.2	12.7	101.6	76.2	
5107.5	14.3	14.3	118.4	38.1	15.7	25.4	103.9	233.4	98.3	127.0	98.3	14.2	127.0	98.3	
10,215.0	17.5	17.5	162.8	50.8	19.1	31.8	145.5	291.1	120.7	152.4	120.7	17.5	152.4	120.7	

kN = Kilonewtons
* Side Stop and Free Sliding Units
** Fixed Pin Units

ORDER INFORMATION

LOAD RATING (PER MODULE)	PART #	PRICE
NTEP/OIML C3 3-Module Kit		
1125lb (5 kN/510.8 kg)	29883	\$3,395.00
2250lb (10 kN/1021.5 kg)	29884	3,395.00
5200lb (23 kN/2360.8 kg)	29885	3,395.00
11,250lb (50 kN/5107.5 kg)	29886	4,595.00
NTEP/OIML C3 4-Module Kit		
1125lb (5 kN/510.8 kg)	29879	4,495.00
2250lb (10 kN/1021.5 kg)	29880	4,495.00
5200lb (23 kN/2360.8 kg)	29881	4,495.00
11,250lb (50 kN/5107.5 kg)	29882	5,795.00

ORDER INFORMATION

LOAD RATING (PER MODULE)	PART #	PRICE
Non-NTEP 3-Module Kit		
520lb (2.3 kN/236.1 kg)	38207	\$3,840.00
1125lb (5 kN/510.8 kg)	17991	3,295.00
2250lb (10 kN/1021.5 kg)	17992	3,295.00
5200lb (23 kN/2360.8 kg)	17993	3,295.00
11,250lb (50 kN/5107.5 kg)	17994	4,295.00
22,500lb (100 kN/10,215.0 kg)	17995	4,895.00
Non-NTEP 4-Module Kit		
520lb (2.3 kN/236.1 kg)	38208	5,025.00
1125lb (5 kN/510.8 kg)	17998	4,295.00
2250lb (10 kN/1021.5 kg)	17999	4,295.00
5200lb (23 kN/2360.8 kg)	18000	4,295.00
11,250lb (50 kN/5107.5 kg)	18001	5,395.00
22,500lb (100 kN/10,215.0 kg)	18002	6,795.00
Conduit Adapter, 1/2-14 NPT	17703	35.00

RL 1700HE Light-to Medium-Capacity Weigh Modules

Picture is a representation of actual product

The 1700HE offers precision-machined, weldless construction to maximize pressure washdown cleaning effectiveness. This design, coupled with integral jacking/shipping bolts, eases installation and minimizes maintenance costs. OIML C3-certified load cells in capacities from 5 kg to 5,000 kg provide accurate, consistent weighments. Ideal for multi-ingredient micro-batching applications, the 1700HE provides exceptional performance in hostile environments. The unique design of the 1700HE isolates the load cell from side loads, overloads, minimizing load cell mechanical damage and eliminating the need for extraneous hardware. The 1700HE offers a guaranteed waterproof rating to ensure reliable performance in moisture-laden environments.

STANDARD FEATURES

- All stainless steel construction
- Hermetically sealed, stainless steel load cells, IP66/68, guaranteed waterproof
- OIML-certified load cells from 5 kg-5,000 kg
- Bolt-in-place design; module bolts directly to tank leg without requiring additional load buttons or mounting plates
- Self-checking with lift-off/tip-over protection and jacking/shipping bolts
- Load cell is isolated from overload in all directions
- Weldless construction retains less residue and allows fast, thorough cleaning
- Two-year limited warranty

APPLICATIONS

- Multi-ingredient micro-batching
- Meat and poultry processing
- Chemical batching/blending
- Dye/ink blending

COMPLETE KIT INCLUDES

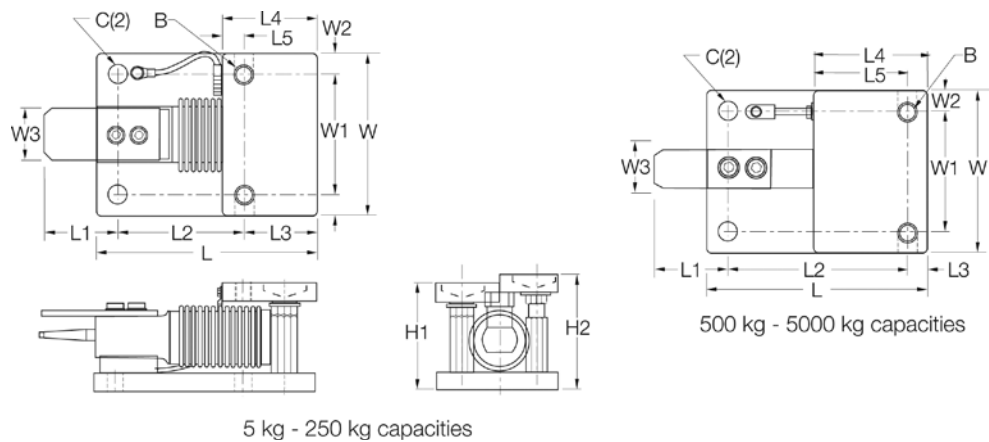
- 1 JB4SS NEMA 4X stainless steel signal-trim junction box
- 3 or 4 1700HE stainless steel compression mounts
- 3 or 4 RLHBB (5-250 kg) or RLHT0 (500-5000 kg) stainless steel, hermetically sealed single-ended beam load cells (see pages 550 or 540)
- 25' of our Hostile Environment EL147HE SURVIVOR® load cell cable

LOAD CELL CERTIFICATIONS



Available
upon
request

RL 1700HE Light-to Medium-Capacity Weigh Modules



DIMENSIONS

RATED CAPACITY	C	B	*H1	**H2	L	L1	L2	L3	L4	L5	W	W1	W2	W3
kg/mm														
5-250	12.9	1/2-20 NF	80.0	86.1	131.8	64.0	76.0	42.0	56.0	14.0	96.0	70.0	13.0	25.4
500-2000	20.0	3/4-10 NC	99.8	108.0	165.0	70.0	130.0	15.0	80.0	64.5	110.0	70.0	20.0	30.0
5000	20.0	3/4-10 NC	135.0	143.0	215.0	81.0	161.0	20.0	90.0	70.5	150.0	90.0	30.0	40.0
lb/inches														
11-550	.40	1/2-13 NF	3.13	3.39	5.19	2.52	2.99	1.65	2.20	.55	3.99	2.76	.51	1.00
1100-4400	.78	3/4-10 NC	3.93	4.25	6.50	2.76	5.12	.59	3.15	2.54	4.33	2.76	.79	1.18
11,000	.78	3/4-10 NC	5.31	5.63	8.46	3.19	6.34	.79	3.56	2.78	5.91	3.54	1.18	1.57

* In weighing position

** In jacked-up position for load cell shipping or removal

ORDER INFORMATION

LOAD RATING (PER MODULE)	PART #	PRICE
OIML C3-Certified Load Cells Included		
5 kg (11.0 lb)	32687	\$825.00
10 kg (22.0 lb)	32688	825.00
20 kg (44.1 lb)	32689	825.00
50 kg (110.2 lb)	32690	825.00
100 kg (220.5 lb)	32691	825.00
200 kg (440.9 lb)	32692	825.00
250 kg (551.2 lb)	32693	825.00
500 kg (1102.3 lb)	32974	995.00
1000 kg (2204.6 lb)	32973	995.00
2000 kg (4,409.2 lb)	32972	995.00
5000 kg (11,023.1 lb)	32971	1,225.00

ORDER INFORMATION

LOAD RATING (PER MODULE)	PART #	PRICE
3-Module Kit		
5 kg (11.0 lb)	32920	\$2,675.00
10 kg (22.0 lb)	32921	2,675.00
20 kg (44.1 lb)	32922	2,675.00
50 kg (110.2 lb)	32923	2,675.00
100 kg (220.5 lb)	32924	2,675.00
200 kg (440.9 lb)	32925	2,675.00
250 kg (551.2 lb)	32926	2,675.00
500 kg (1102.3 lb)	32980	3,185.00
1000 kg (2204.6 lb)	32981	3,185.00
2000 kg (4,409.2 lb)	32982	3,185.00
5000 kg (11,023.1 lb)	32983	3,995.00
4-Module Kit		
5 kg (11.0 lb)	32927	3,500.00
10 kg (22.0 lb)	32928	3,500.00
20 kg (44.1 lb)	32929	3,500.00
50 kg (110.2 lb)	32930	3,500.00
100 kg (220.5 lb)	32931	3,500.00
200 kg (440.9 lb)	32932	3,500.00
250 kg (551.2 lb)	32933	3,500.00
500 kg (1102.3 lb)	32984	4,180.00
1000kg (2204.6 lb)	32985	4,180.00
2000 kg (4,409.2 lb)	32986	4,180.00
5000 kg (11,023.1 lb)	32987	4,895.00

RL1600 HE Medium-Capacity Weigh Modules

Available in configurations with three or four mounting assemblies.

Picture is a representation of actual product

The RL1600 HE Mounting Module Kit utilizes several Rice Lake Weighing Systems components to provide an unmatched level of performance in tank and hopper weighing applications. The RL1600 HE kit is ideally suited for indoor and outdoor process control operations in the medium-capacity ranges. Each module incorporates self-checking capabilities for thermal expansion and contraction.

Fabricated stainless steel module with RL75016 WHE double-ended beam load cell. Refer to page 559 for load cell specifications.

**STANDARD FEATURES**

- Capacities (per module): 1000-25,000 lb (453.6-11,339.8 kg)
- All stainless steel construction
- Self-checking easy-to-use design allows module to be bolted directly to tank leg without requiring additional mounting plates or load buttons
- Hermetically sealed IP66/68 protected load cells
- Double-ended shear beam design, center loaded

APPLICATIONS

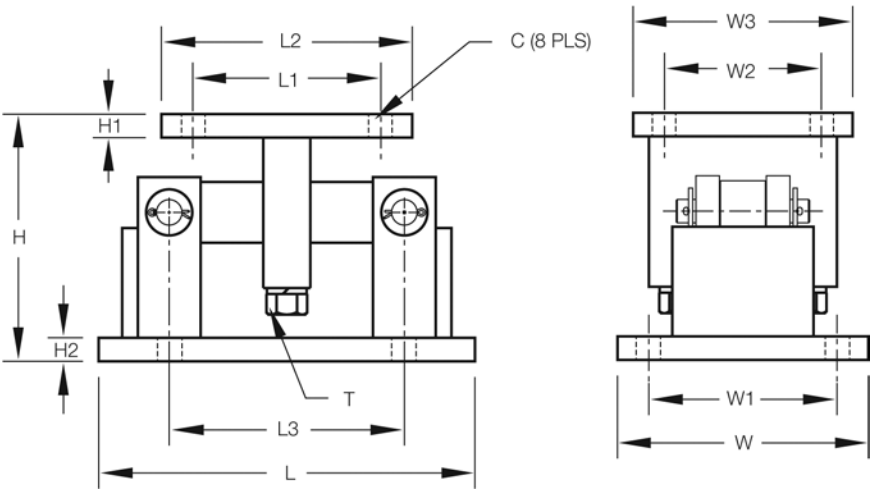
- Medium-capacity tanks, bins and hoppers
- Bulk material management
- Ingredient batching, mixing and blending

COMPLETE KIT INCLUDES

- 1 JB4SS NEMA 4X stainless steel signal trim junction box
- 3 or 4 RL1600 stainless steel compression mounts
- 3 or 4 RL75016 WHE stainless steel, hermetically sealed double-ended shear beam load cells (see page 559)
- 25' of our Hostile Environment EL147HE SURVIVOR® load cell cable

LOAD CELL CERTIFICATIONS

RL1600 HE Medium-Capacity Weigh Modules



DIMENSIONS

RATED CAPACITY	C	H	H1	H2	L	L1	L2	L3	T	W	W1	W2	W3
lb/inches													
1000-5000	.56	5.00	.50	.50	9.25	2.75	4.00	6.25	1/2-13 UNC	5.00	3.75	2.75	4.00
10,000-25,000	.78	7.87	.75	.75	12.00	6.00	8.00	7.50	3/4-10 UNC	8.00	6.00	6.00	8.00
kg/mm													
453.6-2268.0	14.2	127.0	12.7	12.7	235.0	69.9	101.6	158.8	1/2-13 UNC	127.0	95.3	69.9	101.6
4535.9-11,339.8	19.8	199.9	19.1	19.1	304.8	152.4	203.2	190.5	3/4-10 UNC	203.2	152.4	152.4	203.2

ORDER INFORMATION

LOAD RATING (PER MODULE)		PART #	PRICE
3-Module Kit			
1000 lb	(453.6 kg)	46723	\$3,795.00
1500 lb	(680.4 kg)	119673	3,795.00
2000 lb	(907.2 kg)	119675	3,795.00
2500 lb	(1134.0 kg)	46724	3,795.00
5000 lb	(2268.0 kg)	46725	3,795.00
10,000 lb	(4535.9 kg)	46726	5,395.00
15,000 lb	(6803.9 kg)	46727	5,395.00
20,000 lb	(9071.9 kg)	84664	5,395.00
25,000 lb	(11,339.8 kg)	46728	5,395.00
4-Module Kit			
1000 lb	(453.6 kg)	46729	4,795.00
1500 lb	(680.4 kg)	119674	4,795.00
2000 lb	(907.2 kg)	119676	4,795.00
2500 lb	(1134.0 kg)	46730	4,795.00
5000 lb	(2268.0 kg)	46731	4,795.00
10,000 lb	(4535.9 kg)	46732	7,195.00
15,000 lb	(6803.9 kg)	46733	7,195.00
20,000 lb	(9071.9 kg)	84665	7,195.00
25,000 lb	(11,339.8 kg)	46734	7,195.00

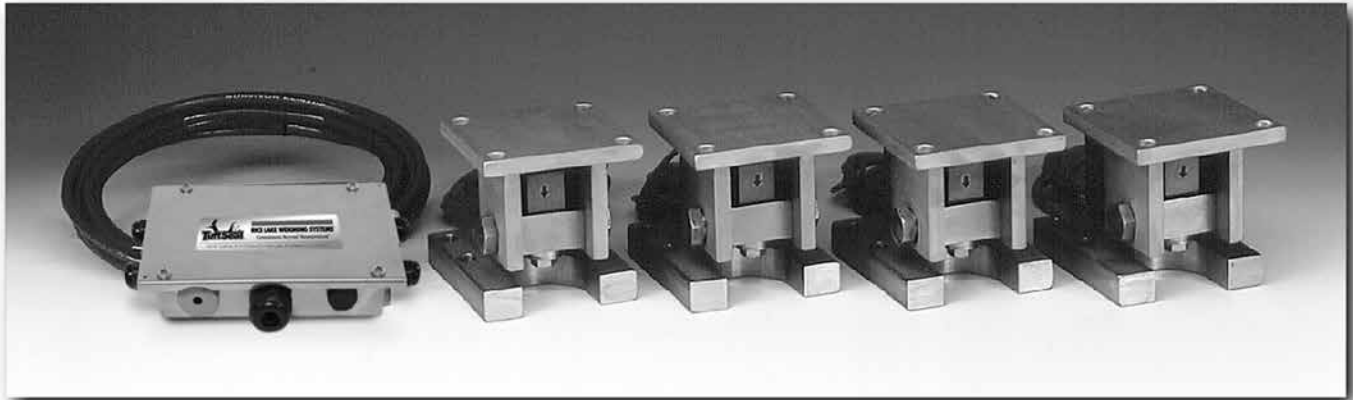
ORDER INFORMATION

LOAD RATING (PER MODULE)		PART #	PRICE
Single Module (Does not Include Load Cell)			
1000-5000 lb	(453.6-2268.0 kg)	17813	\$565.00
10,000-25,000 lb	(4535.9-11,339.8 kg)	17815	1,095.00
Dummy Load Cells (Mild Steel)			
1000-5000 lb	(453.6-2268.0 kg)	18236	20.00
10,000-25,000 lb	(4535.9-11,339.8 kg)	18237	35.00
Equalizer Pads			
1000 lb-5000 lb		Consult	Consult
10,000 lb-25,000 lb		Consult	Consult

SHIMS

		PART #	PRICE
1K-5K			
0.0625		150852	\$3.25
0.125		150853	8.50
0.250		150854	14.25
10K-25K			
0.0625		150855	12.75
0.125		150856	20.50
0.250		150857	57.00
50K-75K			
0.0625		150858	16.25
0.125		150859	26.25
0.250		150861	72.25

Shims match the top plate

RL1855HE Medium-Capacity Weigh Modules

Picture is a representation of actual product

The internal height adjustment feature of the RL1855HE reduces the need for shims or external hardware, simplifying installation. The standard conduit adapter allows for connection to conduit for cable protection. With standard NTEP Certified, 1:5000 division class III load cells, the RL1855HE provides an accurate weighing system when properly installed. Highly versatile, the RL1855HE offers worry-free operation in a wide variety of rugged applications.

STANDARD FEATURES

- All stainless steel construction
- Welded seal, stainless steel load cells, IP67, guaranteed waterproof
- NTEP Certified load cells, 5000d, Class III Multiple Cell
- Bolt-in-place design; module bolts directly to tank leg without requiring additional load buttons or mounting plates
- Self-checking design with lift-off/tip-over protection
- Two-year limited warranty

APPLICATIONS

- Medium-capacity hoppers, bins and tanks
- Chemical batching/blending
- Fertilizer blending

OPTIONAL FEATURES

- RL35082 IP66/68 load cells available

COMPLETE KIT INCLUDES

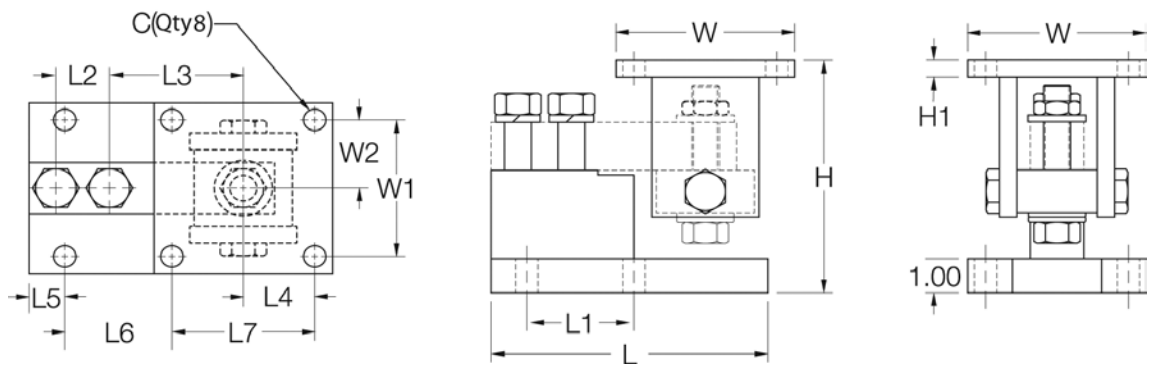
- 1 JB4SS NEMA 4X stainless steel signal-trim junction box
- 3 or 4 1855HE stainless steel compression mounts
- 3 or 4 RL35082 stainless steel, welded seal single-ended beam load cells (see page 538)
- 25' of our Hostile Environment EL147HE SURVIVOR® load cell cable

LOAD CELL CERTIFICATIONS

IP67
RL35082HE
Only

NOTE: Check with your local Weights & Measure officials for suitability in Legal for Trade applications.

RL1855HE Medium-Capacity Weigh Modules



DIMENSIONS

RATED CAPACITY	C	H MIN/MAX	H1	L	L1	L2	L3	L4	L5	L6	L7	W	W1	W2
lb/inches														
1000-4000	.62	5.25/5.56	.50	6.00	2.00	1.00	3.00	2.00	.68	1.94	4.00	5.00	4.00	2.00
5000-10,000	.62	6.12/6.62	.50	7.75	3.00	1.50	3.75	2.00	1.03	2.97	4.00	5.00	4.00	2.00
kg/mm														
453.6-1814.4	15.8	133.4/141.2	12.7	152.4	50.8	25.4	76.2	50.8	17.3	49.3	101.6	127.0	101.6	50.8
2268.0-4535.9	15.8	155.4/168.1	12.7	196.9	76.2	38.1	95.3	50.8	26.2	75.4	101.6	127.0	101.6	50.8

ORDER INFORMATION

LOAD RATING (PER MODULE)	PART #	PRICE
Single Modules (Includes Load Cell)		
1000 lb (453.6 kg)	32975	\$895.00
2500 lb (1134.0 kg)	32976	895.00
4000 lb (1814.4 kg)	32977	895.00
5000 lb (2268.0 kg)	32978	995.00
10,000 lb (4535.9 kg)	32979	995.00

ORDER INFORMATION

LOAD RATING (PER MODULE)	PART #	PRICE
3-Module Kit		
1000 lb (453.6 kg)	30390	\$2,885.00
2500 lb (1134.0 kg)	30388	2,885.00
4000 lb (1814.4 kg)	30386	2,885.00
5000 lb (2268.0 kg)	30384	3,185.00
10,000 lb (4535.9 kg)	30382	3,185.00
4-Module Kit		
1000 lb (453.6 kg)	30389	3,780.00
2500 lb (1134.0 kg)	30387	3,780.00
4000 lb (1814.4 kg)	30385	3,780.00
5000 lb (2268.0 kg)	30383	4,180.00
10,000 lb (4535.9 kg)	30381	4,180.00

RL2100HE Heavy-Capacity Weigh Modules

Picture is a representation of actual product

Incorporating an articulating load plate, hardened load pin and double-ended beam load cell into one simple design, the RL2100HE tolerates eccentric loads and side loads of up to 100% of capacity. The RL2100HE comes standard with NTEP Certified, 1:5000 division class IIIL load cells, yielding up to 0.02% total error. An integral conduit adapter offers added washdown protection. These standard features give the RL2100HE accuracy and dependability in one heavyweight package. The simple load introduction and load cell design provides consistent accuracy in washdown applications, making the RL2100HE ideal for high-capacity hostile environments.

STANDARD FEATURES

- All stainless steel construction
- Welded seal, stainless steel load cells, IP67, guaranteed waterproof
- NTEP Certified load cells, 5000d, Class IIIL/10,000d, Class IIIL Multiple Cell
- Bolt-in-place design; module bolts directly to tank leg without requiring additional load buttons or mounting plates
- Self-checking design with lift-off/tip-over protection
- Two-year limited warranty

APPLICATIONS

- Heavy-capacity tanks, blenders, reactors and bulk inventory management
- Petroleum refining process control
- Chemical blending/batching

COMPLETE KIT INCLUDES

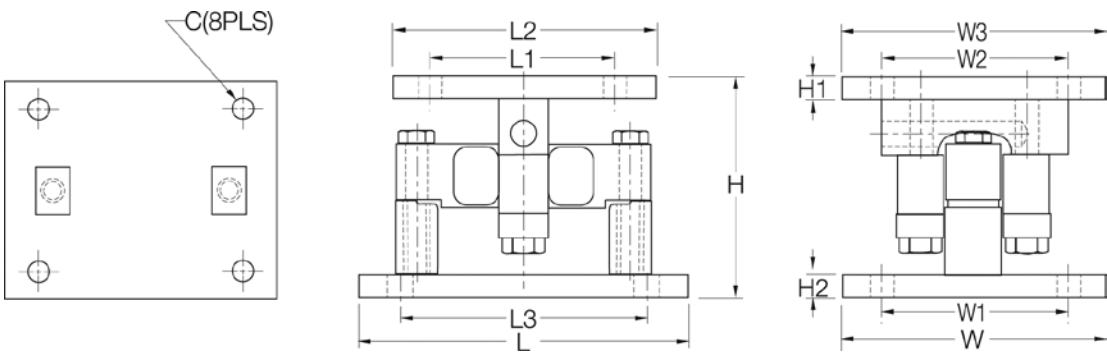
- 1 JB4SS NEMA 4X stainless steel signal-trim junction box
- 3 or 4 2100HE stainless steel compression mounts
- 3 or 4 RL75060S stainless steel, welded seal double-ended beam load cells (see page 561)
- 25' of our Hostile Environment EL147HE SURVIVOR® load cell cable

LOAD CELL CERTIFICATIONS



NOTE: Check with your local weights & measure officials for suitability in Legal for Trade applications.

RL2100HE Heavy-Capacity Weigh Modules



DIMENSIONS

RATED CAPACITY	C	H	H1	H2	L	L1	L2	L3	W	W1	W2	W3
lb/inches												
20,000-25,000	.78	6.85	.75	.75	10.00	6.00	8.00	7.50	8.00	6.00	6.00	8.00
35,000-100,000	1.13	9.42	1.00	1.00	14.00	6.50	9.00	11.50	10.00	7.50	6.50	9.00
kg/mm												
9071.9-11,339.8	19.8	174.0	19.1	19.1	254.0	152.4	203.2	190.5	203.2	152.4	152.4	203.2
15,875.7-45,359.2	28.7	239.3	25.4	25.4	355.6	165.1	228.6	292.1	254.0	190.5	165.1	228.6

ORDER INFORMATION

LOAD RATING (PER MODULE)	PART #	PRICE
Single Module (Includes Load Cell)		
20,000 lb (9071.8 kg)	32951	\$1,675.00
25,000 lb (11,339.8 kg)	65541	1,675.00
35,000 lb (15,875.7 kg)	32952	2,525.00
50,000 lb (22,679.6 kg)	32953	2,525.00
60,000 lb (27,215.5 kg)	32954	2,525.00
75,000 lb (34,019.4 kg)	32955	2,525.00
100,000 lb (45,359.2 kg)	32956	4,350.00

ORDER INFORMATION

LOAD RATING (PER MODULE)	PART #	PRICE
3-Module Kit		
20,000 lb (9071.8 kg)	32970	\$5,125.00
25,000 lb (11,339.8 kg)	65984	5,125.00
35,000 lb (15,875.7 kg)	32969	7,695.00
50,000 lb (22,679.6 kg)	32968	7,695.00
60,000 lb (27,215.5 kg)	32967	7,695.00
75,000 lb (34,019.4 kg)	32966	7,695.00
100,000 lb (45,359.2 kg)	32965	12,600.00
4-Module Kit		
20,000 lb (9071.8 kg)	32964	6,850.00
25,000 lb (11,339.8 kg)	65983	6,850.00
35,000 lb (15,875.7 kg)	32963	10,295.00
50,000 lb (22,679.6 kg)	32962	10,295.00
60,000 lb (27,215.5 kg)	32961	10,295.00
75,000 lb (34,019.4 kg)	32960	10,295.00
100,000 lb (45,359.2 kg)	32959	16,695.00

ITCM Isolated Tension Cell Modules



Available in configurations with three or four mounting assemblies.

Picture is a representation of actual product

The ITCM Series utilizes several Rice Lake Weighing Systems components to provide an unmatched level of performance in tank and hopper weighing applications and mechanical scale conversions. The ITCM incorporates clevis and unique rod-end ball joint assemblies to reduce the overall length to less than half of the traditional tension cell mounts, while providing correct load alignment. In addition, the load cell is completely electrically isolated from stray currents, which are a major cause of load cell failure. To complete the design, a grounding strap connects the two clevis assemblies to further provide safety to your load cells.

Module with RL20000 S-Beam load cell. Refer to page 521 for load cell specifications.

Important: Read "Load Cell Mounting Hardware Safety Guidelines" on page 306



STANDARD FEATURES

- Capacities (per module): 100-20,000 lb (45.4-9071.1 kg)
- Clevis mounts with nylon insulating washers
- PTFE-lined rod-end ball joints
- Load cell is completely isolated from stray currents*
- Grounding strap provides alternative path to ground
- Complete package for ease of installation
- Provides correct load cell loading even in difficult installations
- Lower overall height compared to other isolated tension assemblies
- Zinc plated clevis assemblies

*Excluding 20,000 lb (9071.9 kg) capacity

APPLICATIONS

- Suspended hoppers and tanks
- Mechanical scale conversions
- Use as a single module or in multiples

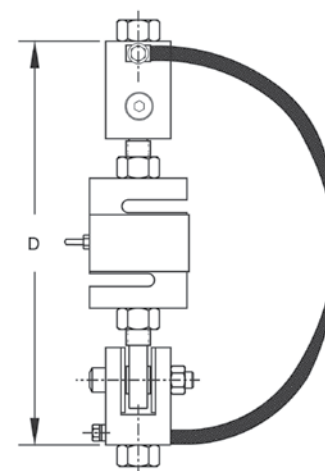
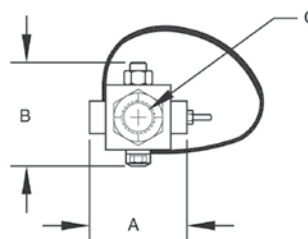
COMPLETE KIT INCLUDES

- 3 or 4 ITCM assemblies with RL20000 NTEP Certified S-Beam load cells (see page 521)
- 1 JB4SS NEMA 4X stainless steel signal trim junction box
- 25 ft of our Hostile Environment EL147HE SURVIVOR® load cell cable

LOAD CELL CERTIFICATIONS



NOTE: Check with your local weights & measure officials for suitability in Legal for Trade applications.



***LOAD RATING DIMENSIONS - INCHES (MM)**

ORDER INFORMATION

LOAD CELL CAPACITY		A		B		C		D		SINGLE MODULE		3-MODULE KIT		4-MODULE KIT	
										Part #	Price	Part #	Price	Part #	Price
100 lb	(45.4 kg)	2.00	(50.8)	1.81	(46.0)	3/8-16 NC	7.00 (ref)	(177.8)		17851	\$450.00	18003	\$1,600.00	18027	\$2,050.00
100 lb	(45.4 kg)	2.00	(50.8)	1.81	(46.0)	1/2-13 NC	7.00 (ref)	(177.8)		17831	450.00	18004	1,600.00	18028	2,050.00
150 lb	(68.0 kg)	2.00	(50.8)	1.81	(46.0)	3/8-16 NC	7.00 (ref)	(177.8)		30337	450.00	30357	1,600.00	30359	2,050.00
150 lb	(68.0 kg)	2.00	(50.8)	1.81	(46.0)	1/2-13 NC	7.00 (ref)	(177.8)		30336	450.00	30358	1,600.00	30360	2,050.00
200 lb	(90.7 kg)	2.00	(50.8)	1.81	(46.0)	3/8-16 NC	7.00 (ref)	(177.8)		30335	450.00	30361	1,600.00	30363	2,050.00
200 lb	(90.7 kg)	2.00	(50.8)	1.81	(46.0)	1/2-13 NC	7.00 (ref)	(177.8)		30338	450.00	30362	1,600.00	30364	2,050.00
250 lb	(113.4 kg)	2.00	(50.8)	1.81	(46.0)	3/8-16 NC	7.00 (ref)	(177.8)		17852	450.00	18005	1,600.00	18029	2,050.00
250 lb	(113.4 kg)	2.00	(50.8)	1.81	(46.0)	1/2-13 NC	7.00 (ref)	(177.8)		17832	450.00	18006	1,600.00	18030	2,050.00
500 lb	(226.8 kg)	2.68	(68.1)	2.68	(68.1)	1/2-13 NC	9.50 (ref)	(241.3)		17853	480.00	18007	1,690.00	18031	2,075.00
500 lb	(226.8 kg)	2.68	(68.1)	2.68	(68.1)	5/8-11 NC	9.50 (ref)	(241.3)		17858	480.00	18008	1,690.00	18032	2,075.00
500 lb	(226.8 kg)	2.68	(68.1)	2.68	(68.1)	3/4-10 NC	9.50 (ref)	(241.3)		17833	480.00	18009	1,690.00	18033	2,075.00
750 lb	(340.2 kg)	2.68	(68.1)	2.68	(68.1)	1/2-13 NC	9.50 (ref)	(241.3)		17854	480.00	18010	1,690.00	18034	2,075.00
750 lb	(340.2 kg)	2.68	(68.1)	2.68	(68.1)	5/8-11 NC	9.50 (ref)	(241.3)		17859	480.00	18011	1,690.00	18035	2,075.00
750 lb	(340.2 kg)	2.68	(68.1)	2.68	(68.1)	3/4-10 NC	9.50 (ref)	(241.3)		17834	480.00	18012	1,690.00	18036	2,075.00
1000 lb	(453.6 kg)	2.68	(68.1)	2.68	(68.1)	1/2-13 NC	9.50 (ref)	(241.3)		17855	480.00	18013	1,690.00	18037	2,075.00
1000 lb	(453.6 kg)	2.68	(68.1)	2.68	(68.1)	5/8-11 NC	9.50 (ref)	(241.3)		17860	480.00	18014	1,690.00	18038	2,075.00
1000 lb	(453.6 kg)	2.68	(68.1)	2.68	(68.1)	3/4-10 NC	9.50 (ref)	(241.3)		17835	480.00	18015	1,690.00	18039	2,075.00
1500 lb	(680.4 kg)	2.68	(68.1)	2.68	(68.1)	1/2-13 NC	9.50 (ref)	(241.3)		17856	480.00	18016	1,690.00	18040	2,075.00
1500 lb	(680.4 kg)	2.68	(68.1)	2.68	(68.1)	5/8-11 NC	9.50 (ref)	(241.3)		17861	480.00	18017	1,690.00	18041	2,075.00
1500 lb	(680.4 kg)	2.68	(68.1)	2.68	(68.1)	3/4-10 NC	9.50 (ref)	(241.3)		17836	480.00	18018	1,690.00	18042	2,075.00
2000 lb	(907.2 kg)	2.68	(68.1)	2.68	(68.1)	1/2-13 NC	9.50 (ref)	(241.3)		17857	480.00	18019	1,690.00	18043	2,075.00
2000 lb	(907.2 kg)	2.68	(68.1)	2.68	(68.1)	5/8-11 NC	9.50 (ref)	(241.3)		17862	480.00	18020	1,690.00	18044	2,075.00
2000 lb	(907.2 kg)	2.68	(68.1)	2.68	(68.1)	3/4-10 NC	9.50 (ref)	(241.3)		17837	480.00	18021	1,690.00	18045	2,075.00
2500 lb	(1134.0 kg)	2.68	(68.1)	2.68	(68.1)	5/8-11 NC	9.50 (ref)	(241.3)		17863	480.00	18022	1,690.00	18046	2,075.00
2500 lb	(1134.0 kg)	2.68	(68.1)	2.68	(68.1)	3/4-10 NC	9.50 (ref)	(241.3)		17838	480.00	18023	1,690.00	18047	2,075.00
3000 lb	(1360.8 kg)	3.37	(85.6)	3.37	(85.6)	3/4-10 NC	10.50 (ref)	(266.7)		30339	520.00	30365	1,810.00	30366	2,310.00
5000 lb	(2268.0 kg)	3.37	(85.6)	3.37	(85.6)	3/4-10 NC	12.25 (ref)	(311.2)		17864	695.00	18024	2,340.00	18048	3,030.00
5000 lb	(2268.0 kg)	3.37	(85.6)	3.37	(85.6)	1-8 NC	12.25 (ref)	(311.2)		17839	695.00	18025	2,340.00	18049	3,030.00
10,000 lb	(4535.9 kg)	3.37	(85.6)	3.37	(85.6)	1-8 NC	12.25 (ref)	(311.2)		17840	695.00	18026	2,340.00	18050	3,030.00
15,000 lb	(6803.9 kg)	4.00	(101.6)	4.12	(104.6)	1 1/4-7 NC	18.00 (ref)	(457.2)		17960	1,370.00	30353	4,655.00	30354	5,980.00
20,000 lb	(9071.9 kg)	5.00	(127.0)	4.12	(104.6)	1 1/2-6 UNC	20.00 (ref)	(508.0)		17961	1,715.00	30355	5,455.00	30356	7,275.00

*Load Rating is per module

ITCM SS Stainless Steel Isolated Tension Cell Modules



Available in configurations with three or four mounting assemblies.

Picture is a representation of actual product

The ITCM Series utilizes several Rice Lake Weighing Systems components to provide an unmatched level of performance in tank and hopper weighing applications and mechanical scale conversions. The ITCM SS incorporates clevis and unique rod-end ball joint assemblies to reduce the overall length to less than half of the traditional tension cell mounts, while providing correct load alignment. In addition, the load cell is completely electrically isolated from stray currents, which are a major cause of load cell failure. To complete the design, a grounding strap connects the two clevis assemblies to further provide safety to your load cells.

Module with RL20000 ST S-Beam load cell. Refer to page 525 for load cell specifications.

Important: Read "Load Cell Mounting Hardware Safety Guidelines" on page 306



STANDARD FEATURES

- Capacities (per module): 100-5,000 lb (45.4-2268.0 kg)
- Clevis mounts with nylon insulating washers
- PTFE-lined rod-end ball joints
- Load cell is completely isolated from stray currents
- Grounding strap provides alternative path to ground
- Complete package for ease of installation
- Provides correct load cell loading even in difficult installations
- Lower overall height compared to other isolated tension assemblies

APPLICATIONS

- Suspended hoppers and tanks
- Mechanical scale conversions
- Use as a single module or in multiples

COMPLETE KIT INCLUDES

- 3 or 4 ITCM assemblies with RL20000 ST NTEP Certified S-Beam load cells (see page 525)
- 1 JB4SS NEMA 4X stainless steel signal trim junction box
- 25 ft of our Hostile Environment EL147HE SURVIVOR® load cell cable

LOAD CELL CERTIFICATIONS



NOTE: Check with your local weights & measure officials for suitability in Legal for Trade applications.

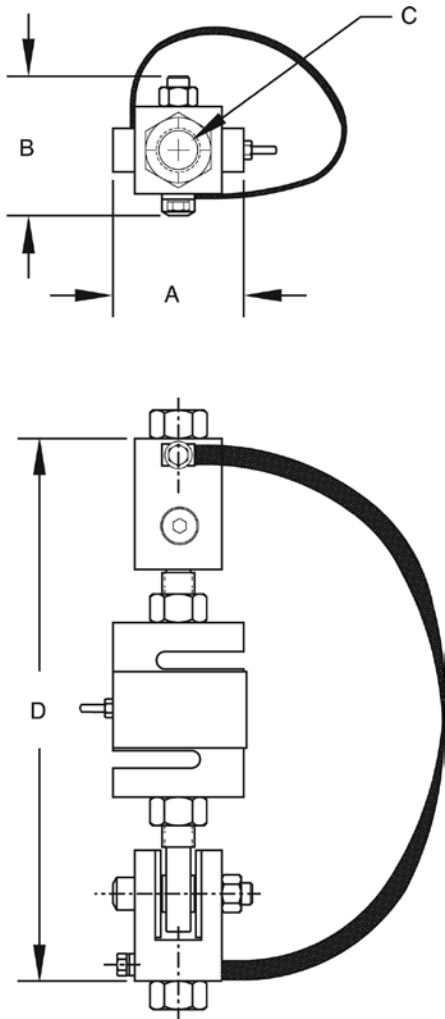
ITCM SS Stainless Steel Isolated Tension Cell Modules

*LOAD RATING DIMENSIONS - INCHES (MM)

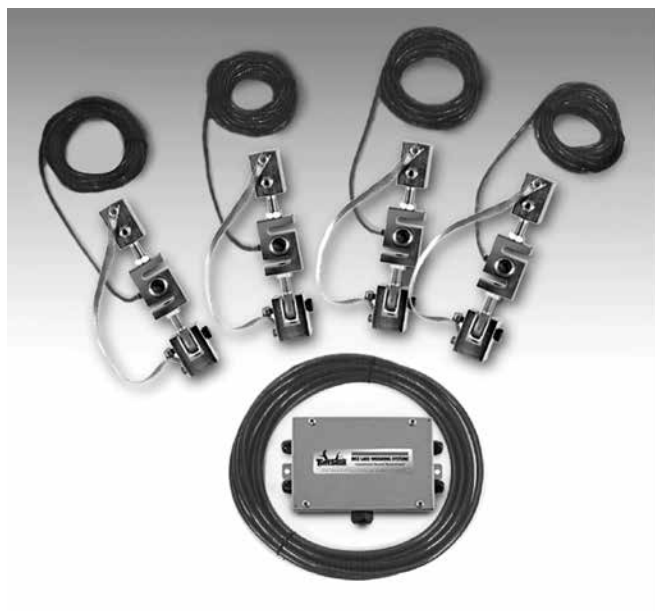
ORDER INFORMATION

LOAD CELL CAPACITY	A	B	C	D	SINGLE MODULE		3-MODULE KIT		4-MODULE KIT	
					Part #	Price	Part #	Price	Part #	Price
100 lb (45.4 kg)	2.00 (50.8)	1.81 (46.0)	3/8-16 NC	7.00 (ref) (177.8)	46765	\$725.00	46735	\$2,385.00	46751	\$3,015.00
100 lb (45.4 kg)	2.00 (50.8)	1.81 (46.0)	1/2-13 NC	7.00 (ref) (177.8)	46766	725.00	46736	2,385.00	46752	3,015.00
250 lb (113.4 kg)	2.00 (50.8)	1.81 (46.0)	3/8-16 NC	7.00 (ref) (177.8)	46767	725.00	46737	2,385.00	46753	3,015.00
250 lb (113.4 kg)	2.00 (50.8)	1.81 (46.0)	1/2-13 NC	7.00 (ref) (177.8)	46768	725.00	46738	2,385.00	46754	3,015.00
500 lb (226.8 kg)	2.68 (68.1)	2.68 (68.1)	1/2-13 NC	9.50 (ref) (241.3)	46769	725.00	46739	2,385.00	46755	3,015.00
500 lb (226.8 kg)	2.68 (68.1)	2.68 (68.1)	5/8-11 NC	9.50 (ref) (241.3)	46770	725.00	46740	2,385.00	46756	3,015.00
750 lb (340.2 kg)	2.68 (68.1)	2.68 (68.1)	1/2-13 NC	9.50 (ref) (241.3)	46771	725.00	46741	2,385.00	46757	3,015.00
750 lb (340.2 kg)	2.68 (68.1)	2.68 (68.1)	5/8-11 NC	9.50 (ref) (241.3)	46772	725.00	46742	2,385.00	46758	3,015.00
1000 lb (453.6 kg)	2.68 (68.1)	2.68 (68.1)	1/2-13 NC	9.50 (ref) (241.3)	46773	725.00	46743	2,385.00	46759	3,015.00
1000 lb (453.6 kg)	2.68 (68.1)	2.68 (68.1)	5/8-11 NC	9.50 (ref) (241.3)	46774	725.00	46744	2,385.00	46760	3,015.00
2500 lb (1134.0 kg)	2.68 (68.1)	2.68 (68.1)	5/8-11 NC	9.50 (ref) (241.3)	46775	725.00	46745	2,385.00	46761	3,015.00
2500 lb (1134.0 kg)	2.68 (68.1)	2.68 (68.1)	3/4-10 NC	9.50 (ref) (241.3)	46776	725.00	46746	2,385.00	46762	3,015.00
3000 lb (1360.8 kg)	3.37 (85.6)	3.37 (85.6)	3/4-10 NC	10.75 (ref) (273.0)	46777	775.00	46747	2,535.00	46763	3,215.00
5000 lb (2268.0 kg)	3.37 (85.6)	3.37 (85.6)	3/4-10 NC	12.00 (ref) (304.8)	46778	1,365.00	46748	4,305.00	46764	5,675.00

* Load Rating is per module



ITCM HE Stainless Steel, Welded-Seal NTEP-Approved Isolated Tension Cell Modules



Available in configurations with three or four mounting assemblies.

Picture is a representation of actual product

The ITCM Series utilizes several Rice Lake Weighing Systems components to provide an unmatched level of performance in tank and hopper weighing applications and mechanical scale conversions. The ITCM HE incorporates clevis and unique rod-end ball joint assemblies to reduce the overall length to less than half of the traditional tension cell mounts, while providing correct load alignment. In addition, the load cell is completely electrically isolated from stray currents, which are a major cause of load cell failure. To complete the design, a grounding strap connects the two clevis assemblies to further provide safety to your load cells.

Module with RL20001 HE S-Beam load cell. Refer to page 527 for load cell specifications.

Important: Read "Load Cell Mounting Hardware Safety Guidelines" on page 306



STANDARD FEATURES

- Capacities (per module): 500-5,000 lb (226.8-2268.0 kg)
- Clevis mounts with nylon insulating washers
- PTFE-lined rod-end ball joints
- Load cell is completely isolated from stray currents
- Grounding strap provides alternative path to ground
- Complete package for ease of installation
- Provides correct load-cell loading even in difficult installations
- Lower overall height compared to other isolated tension assemblies

APPLICATIONS

- Suspended hoppers and tanks
- Mechanical scale conversions
- Use as a single module or in multiples

COMPLETE KIT INCLUDES

- 3 or 4 ITCM assemblies with RL20001HE Stainless Steel, Welded Seal (see page 527)
- NTEP Certified S-Beam load cells
- 1 JB4SS NEMA 4X stainless steel signal trim junction box
- 25 ft of our Hostile Environment EL147HE SURVIVOR® load cell cable

LOAD CELL CERTIFICATIONS



NOTE: Check with your local weights & measure officials for suitability in Legal for Trade applications.

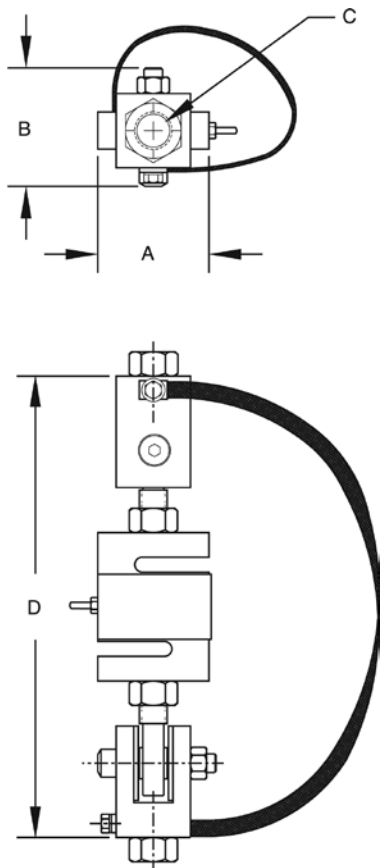
ITCM HE Stainless Steel, Welded-Seal NTEP-Approved Isolated Tension Cell Modules

*LOAD RATING DIMENSIONS - INCHES (MM)

ORDER INFORMATION

LOAD CELL CAPACITY		A	B	C	D	SINGLE MODULE		3-MODULE KIT		4-MODULE KIT	
						Part #	Price	Part #	Price	Part #	Price
500 lb	(226.8 kg)	2.68 (68.1)	2.68 (68.1)	1/2-13 NC	9.50 (ref) (241.3)	46599	\$1,340.00	46561	\$4,020.00	46580	\$5,360.00
500 lb	(226.8 kg)	2.68 (68.1)	2.68 (68.1)	5/8-11 NC	9.50 (ref) (241.3)	46600	1,340.00	46562	4,020.00	46581	5,360.00
500 lb	(226.8 kg)	2.68 (68.1)	2.68 (68.1)	3/4-10 NC	9.50 (ref) (241.3)	46601	1,340.00	46563	4,020.00	46582	5,360.00
750 lb	(340.2 kg)	2.68 (68.1)	2.68 (68.1)	1/2-13 NC	9.50 (ref) (241.3)	46602	1,340.00	46564	4,020.00	46583	5,360.00
750 lb	(340.2 kg)	2.68 (68.1)	2.68 (68.1)	5/8-11 NC	9.50 (ref) (241.3)	46603	1,340.00	46565	4,020.00	46584	5,360.00
750 lb	(340.2 kg)	2.68 (68.1)	2.68 (68.1)	3/4-10 NC	9.50 (ref) (241.3)	46604	1,340.00	46566	4,020.00	46585	5,360.00
1000 lb	(453.6 kg)	2.68 (68.1)	2.68 (68.1)	1/2-13 NC	9.50 (ref) (241.3)	46605	1,340.00	46567	4,020.00	46586	5,360.00
1000 lb	(453.6 kg)	2.68 (68.1)	2.68 (68.1)	5/8-11 NC	9.50 (ref) (241.3)	46606	1,340.00	46568	4,020.00	46587	5,360.00
1000 lb	(453.6 kg)	2.68 (68.1)	2.68 (68.1)	3/4-10 NC	9.50 (ref) (241.3)	46607	1,340.00	46569	4,020.00	46588	5,360.00
1500 lb	(680.4 kg)	2.68 (68.1)	2.68 (68.1)	1/2-13 NC	9.50 (ref) (241.3)	46608	1,340.00	46570	4,020.00	46589	5,360.00
1500 lb	(680.4 kg)	2.68 (68.1)	2.68 (68.1)	5/8-11 NC	9.50 (ref) (241.3)	46609	1,340.00	46571	4,020.00	46590	5,360.00
1500 lb	(680.4 kg)	2.68 (68.1)	2.68 (68.1)	3/4-10 NC	9.50 (ref) (241.3)	46610	1,340.00	46572	4,020.00	46591	5,360.00
2000 lb	(907.2 kg)	2.68 (68.1)	2.68 (68.1)	1/2-13 NC	9.50 (ref) (241.3)	46611	1,340.00	46573	4,020.00	46592	5,360.00
2000 lb	(907.2 kg)	2.68 (68.1)	2.68 (68.1)	5/8-11 NC	9.50 (ref) (241.3)	46612	1,340.00	46574	4,020.00	46593	5,360.00
2000 lb	(907.2 kg)	2.68 (68.1)	2.68 (68.1)	3/4-10 NC	9.50 (ref) (241.3)	46613	1,340.00	46575	4,020.00	46594	5,360.00
2500 lb	(1134.0 kg)	2.68 (68.1)	2.68 (68.1)	5/8-11 NC	9.50 (ref) (241.3)	46614	1,340.00	46576	4,020.00	46595	5,360.00
2500 lb	(1134.0 kg)	2.68 (68.1)	2.68 (68.1)	3/4-10 NC	9.50 (ref) (241.3)	46615	1,340.00	46577	4,020.00	46596	5,360.00
3000 lb	(1360.8 kg)	3.37 (85.6)	3.37 (85.6)	3/4-10 NC	10.00 (ref) (254.0)	46616	1,340.00	46578	4,020.00	46597	5,360.00
5000 lb	(2268.0 kg)	3.37 (85.6)	3.37 (85.6)	3/4-10 NC	12.62 (ref) (320.5)	46617	2,010.00	46579	6,030.00	46598	8,040.00

* Load Rating is per module



RL50210 TA 50-500 lb Capacity Mini Tank Weighing Module

Available in configurations with three or four mounting assemblies.

Picture is a representation of actual product

The RL50210 TA Weigh Module Kit provides a cost-effective alternative for your customers' low-range weighing needs. A variety of features makes this kit easy to install and an exceptional choice for various indoor weighing applications where checking requirements are low. Environmentally protected load cells, neoprene isolation/compression mounts and other Rice Lake Weighing Systems components are the keys to this module's outstanding performance.

Module with RL50210 or RL50210SS cantilever beam load cell; capacities (per module): 50 lb (22.7 kg), 100 lb (45.4 kg), 150 lb (68.0 kg) and 250 lb (113.4 kg). Refer to page 546 for load cell specifications. 500 lb model features RL30000 single-ended beam load cell; refer to page 529 for load cell specifications.

**STANDARD FEATURES**

- Zinc plated, mild steel modules
- Lower weighing ranges from 50-500 lb (22.7-226.8 kg) per module
- Environmentally protected load cells
- Neoprene isolation/compression mounts allow for minor misalignment, thermal expansion and shock absorption
- Overload stop for 500 lb (226.8 kg) modules provides durability

APPLICATIONS

- Small tanks and hoppers
- Conveyor/in-motion weighing
- Small platform scales where minor shock loading may be a problem

OPTIONAL FEATURES

- Stainless steel modules available in 50, 100, 150, 250 and 500 lb (22.7, 45.4, 68.0, 113.4, 226.8 kg) capacity with RL50210SS, RL50210SS and RL39123 stainless steel load cells or Vishay Sensortronics 65023 SS load cells
- 65059 kits available with Vishay Sensortronics 60040 load cells, capacities: 50-250 lb (22.7-113.4 kg) or 65023 load cells, capacity: 500 lb (226.8 kg)

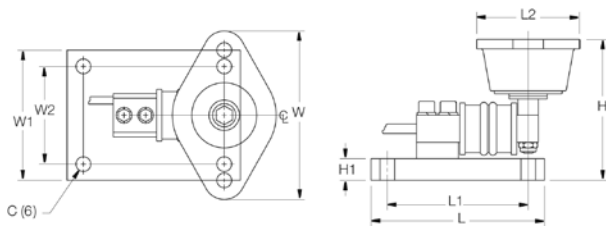
COMPLETE KIT INCLUDES

- 1 JB4SS NEMA 4X stainless steel signal trim junction box
- 3 or 4 RL50210 cantilever beam load cells (50-250 lb models) (see page 546)
- 3 or 4 RL30000 single-ended beam load cells (500 lb models) (see page 529)
- 3 or 4 neoprene isolation/compression mounts
- 25 ft of our Hostile Environment EL147HE SURVIVOR® load cell cable

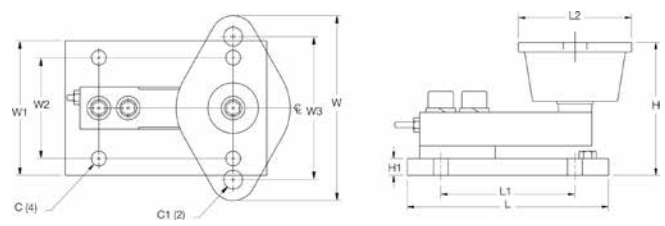
LOAD CELL CERTIFICATIONS

Rice Lake model
only, not stainless
steel models

RL50210 TA 50-500lb Capacity Mini Tank Weighing Module



50-250 lb (22.7-113.4 kg)



500 lb (226.8 kg)

DIMENSIONS

RATED CAPACITY	C	C1	H	H1	L	L1	L2	W	W1	W2	W3
lb/inches											
50-250	.34	—	3.13	.50	4.00	3.25	2.38	3.88	3.00	2.25	—
500	.44	.56	3.88	.50	6.00	4.00	3.38	5.50	4.00	3.00	4.13
kg/mm											
22.7-113.4	8.6	—	79.5	12.7	101.6	82.6	60.5	98.6	76.2	57.2	—
226.8	11.2	14.2	98.6	12.7	152.4	101.6	85.9	139.7	101.6	76.2	104.9

ORDER INFORMATION

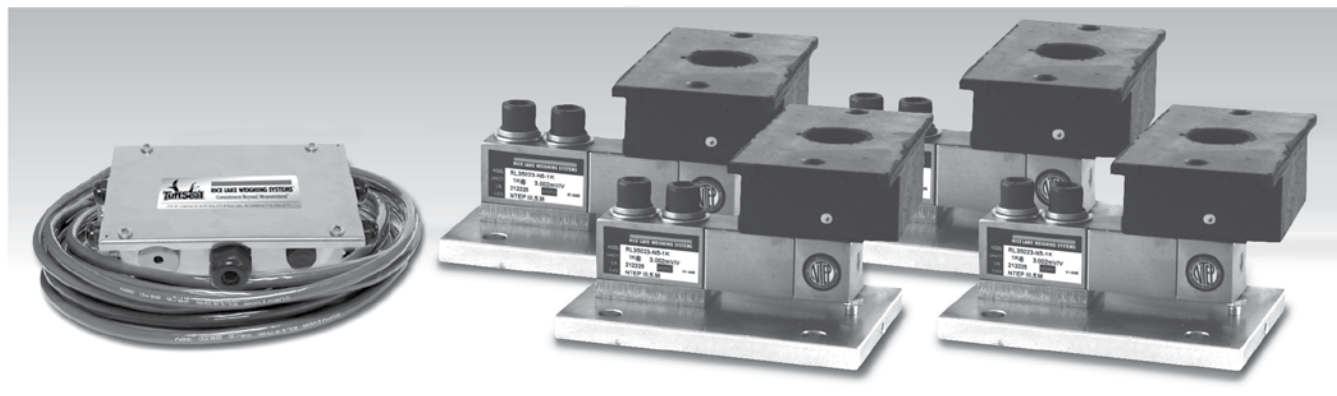
*LOAD RATING (PER MODULE)	PART #	PRICE
Mild Steel Single Module (Includes Load Cell)		
50 lb (22.7 kg)	17844	\$395.00
100 lb (45.4 kg)	17845	395.00
150 lb (68.0 kg)	17846	395.00
250 lb (113.4 kg)	17847	395.00
500 lb (226.8 kg)	17848	525.00
Mild Steel 3-Module Kit		
50 lb (22.7 kg)	18051	1,370.00
100 lb (45.4 kg)	18052	1,370.00
150 lb (68.0 kg)	18053	1,370.00
250 lb (113.4 kg)	18054	1,370.00
500 lb (226.8 kg)	18055	1,775.00
Mild Steel 4-Module Kit		
50 lb (22.7 kg)	18057	1,760.00
100 lb (45.4 kg)	18058	1,760.00
150 lb (68.0 kg)	18059	1,760.00
250 lb (113.4 kg)	18060	1,760.00
500 lb (226.8 kg)	18061	2,250.00
Stainless Steel Single Module (Includes Load Cell)		
50 lb (22.7 kg)	63033	625.00
100 lb (45.4 kg)	63034	625.00
150 lb (68.0 kg)	63035	625.00
250 lb (113.4 kg)	63036	625.00
500 lb (226.8 kg)	17954	610.00
Stainless Steel 3-Module Kit		
500 lb (226.8 kg)	30394	2,020.00
Stainless Steel 4-Module Kit		
500 lb (226.8 kg)	30393	2,650.00

VPG SENSORTRONICS 65059

ORDER INFORMATION

*LOAD RATING (PER MODULE)	PART #	PRICE
Mild Steel Single Module (Includes Load Cell)		
50 lb (22.7 kg)	17825	\$395.00
100 lb (45.4 kg)	17826	395.00
150 lb (68.0 kg)	17827	395.00
250 lb (113.4 kg)	17828	395.00
500 lb (226.8 kg)	17829	525.00
Mild Steel 3-Module Kit		
50 lb (22.7 kg)	18063	1,370.00
100 lb (45.4 kg)	18064	1,370.00
150 lb (68.0 kg)	18065	1,370.00
250 lb (113.4 kg)	18066	1,370.00
500 lb (226.8 kg)	18067	1,775.00
Mild Steel 4-Module Kit		
50 lb (22.7 kg)	18069	1,760.00
100 lb (45.4 kg)	18070	1,760.00
150 lb (68.0 kg)	18071	1,760.00
250 lb (113.4 kg)	18072	1,760.00
500 lb (226.8 kg)	18073	2,250.00
Stainless Steel Single Module (Includes Load Cell)		
500 lb (226.8 kg)	17950	610.00
Stainless Steel 3-Module Kit		
500 lb (226.8 kg)	30392	2,020.00
Stainless Steel 4-Module Kit		
500 lb (226.8 kg)	30391	2,650.00

* Load Rating is per module

RL50210 TA 1000-2500lb Capacity Mini Tank Weighing Module

Available in configurations with three or four mounting assemblies.

Picture is a representation of actual product

The RL50210 TA Weigh Module Kit provides a cost-effective alternative for your customers' medium-range weighing needs. A variety of features makes this kit easy to install and an exceptional choice for various indoor weighing applications where checking requirements are low. Environmentally protected load cells, neoprene isolation/compression mounts and other Rice Lake Weighing Systems components are the keys to this module's performance.

Module with RL35023 single-ended shear beam load cell; capacities (per module): NTEP Certified 1000lb (453.6 kg) load cell shown. Refer to page 535 for load cell specifications.

**STANDARD FEATURES**

- NTEP Certified load cells (alloy steel only), 1:5000d, Class III Multiple Cell
- Zinc plated, mild steel assemblies
- Medium weighing ranges from 1000-2500 lb (453.6-1134.0 kg) per module
- Environmentally protected load cells
- Neoprene isolation/compression mounts allow for minor misalignment, thermal expansion and shock absorption
- Overload stop provides durability
- RL50210 stainless steel mounts use RL35023S stainless steel load cells, capacities: 1000-2500 lb (453.6-1134.0 kg) NTEP cells
- 65059 stainless steel mounts use Vishay Sensortronics 65023S NTEP stainless steel load cells

APPLICATIONS

- Small tanks and hoppers
- Conveyor/In-motion weighing
- Small platform scales where minor shock loading may be a problem

COMPLETE KIT INCLUDES

- 1 JB4SS NEMA 4X stainless steel signal trim junction box
- 3 or 4 RL35023 shear beam load cells (see page 535)
- 3 or 4 neoprene isolation/compression mounts
- 25 ft of our Hostile Environment EL147HE SURVIVOR® load cell cable

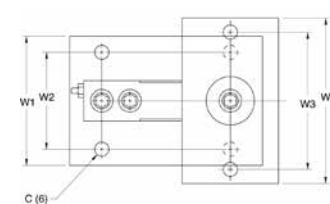
OPTIONAL FEATURES

- Welded stainless steel cells available in stainless steel mounts

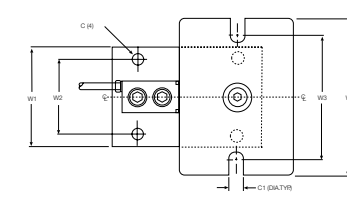
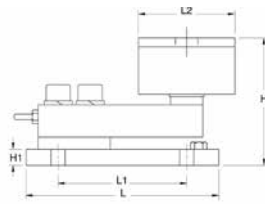
LOAD CELL CERTIFICATIONS

NOTE: Check with your local weights & measure officials for suitability in Legal for Trade applications.

RL50210 TA 1000-2500 lb Capacity Mini Tank Weighing Module



1000 lb (453.6 kg)



2000 lb-2500 lb (907.2 kg-1134.0 kg)

DIMENSIONS

RATED CAPACITY	C	C1	H	H1	L	L1	L2	W	W1	W2	W3
lb/inches											
1000	.44	—	4.00	.50	6.00	4.00	3.00	5.13	4.00	3.00	4.13
2000-2500	.44	.56	4.00	.50	6.00	4.00	4.62	6.25	4.00	3.00	5.00
kg/mm											
453.6	11.2	—	101.6	12.7	152.4	101.6	76.2	130.3	101.6	76.2	104.9
907.2-1134.0	11.2	14.2	101.6	12.7	152.4	101.6	117.3	158.8	101.6	76.2	127.0

ORDER INFORMATION

*LOAD RATING (PER MODULE)	PART #	PRICE
Mild Steel Single Module (Includes Load Cell)		
1000 lb (453.6 kg)	17849	\$525.00
2000 lb (907.2 kg)	17948	525.00
2500 lb (1134.0 kg)	17949	525.00
Mild Steel 3-Module Kit		
1000 lb (453.6 kg)	18056	1,775.00
2000 lb (907.2 kg)	30398	1,775.00
2500 lb (1134.0 kg)	30396	1,775.00
Mild Steel 4-Module Kit		
1000 lb (453.6 kg)	18062	2,275.00
2000 lb (907.2 kg)	30397	2,275.00
2500 lb (1134.0 kg)	30395	2,275.00
Stainless Steel Single Module (Includes Load Cell)		
1000 lb (453.6 kg)	17955	610.00
2000 lb (907.2 kg)	17956	610.00
2500 lb (1134.0 kg)	17957	610.00
Stainless Steel 3-Module Kit		
1000 b (453.6 kg)	30404	2,020.00
2000 lb (907.2 kg)	30402	2,020.00
2500 lb (1134.0 kg)	30400	2,020.00
Stainless Steel 4-Module Kit		
1000 lb (453.6 kg)	30403	2,650.00
2000 lb (907.2 kg)	30401	2,650.00
2500 lb (1134.0 kg)	30399	2,650.00

* Load Rating is per module

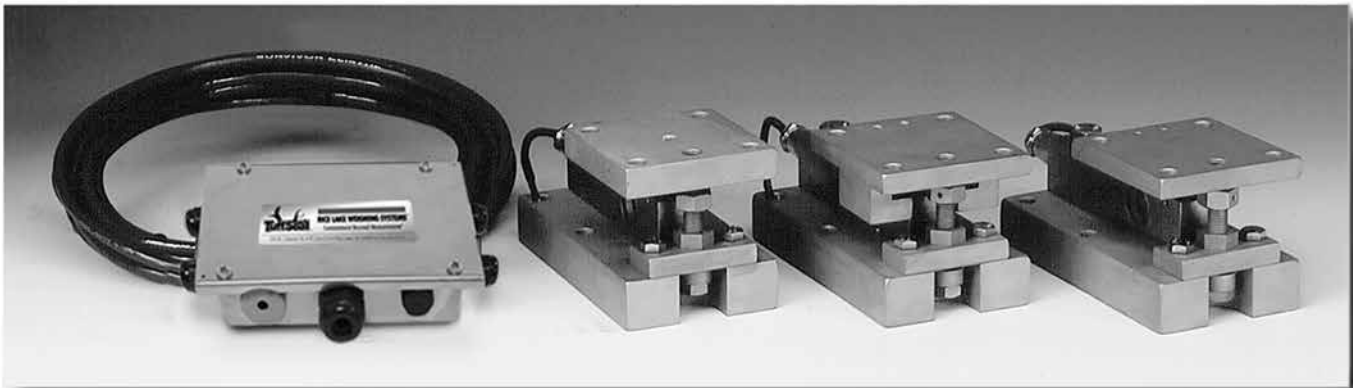
VPG SENSORTRONICS 65059
ORDER INFORMATION

*LOAD RATING (PER MODULE)	PART #	PRICE
Mild Steel Single Module (Includes Load Cell)		
1000 lb (453.6 kg)	17830	\$525.00
2000 lb (907.2 kg)	17946	525.00
2500 lb (1134.0 kg)	17947	525.00
Mild Steel 3-Module Kit		
1000 lb (453.6 kg)	18068	1,775.00
2000 lb (907.2 kg)	30413	1,775.00
2500 lb (1134.0 kg)	30412	1,775.00
Mild Steel 4-Module Kit		
1000 lb (453.6 kg)	18074	2,275.00
2000 lb (907.2 kg)	30414	2,275.00
2500 lb (1134.0 kg)	30411	2,275.00
Stainless Steel Single Module (Includes Load Cell)		
1000 lb (453.6 kg)	17951	610.00
2000 lb (907.2 kg)	17952	610.00
2500 lb (1134.0 kg)	17953	610.00
Stainless Steel 3-Module Kit		
1000 lb (453.6 kg)	30410	2,020.00
2000 lb (907.2 kg)	30408	2,020.00
2500 lb (1134.0 kg)	30406	2,020.00
Stainless Steel 4-Module Kit		
1000 lb (453.6 kg)	30409	2,650.00
2000 lb (907.2 kg)	30407	2,650.00
2500 lb (1134.0 kg)	30405	2,650.00

* Load Rating is per module

Paramounts® EP (Environmentally-Protected) Mild Steel, Light-to Medium-Capacity Tank Weighing Systems

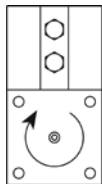
WEIGH MODULES



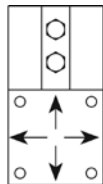
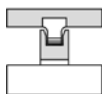
Available in configurations with three or four mounting assemblies.
Picture is a representation of actual product

The Paramounts EP system offers all the design advantages of the Paramounts system in applications where the extensive sealing of the SB4 load cell is not necessary. Paramounts EP provides a low-cost alternative for the superior mechanical loading system found in the standard Paramounts. Economy and performance are in one complete weighing system.

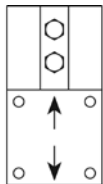
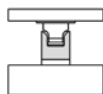
Free-Sliding Module with Flintec SB5 bending beam load cell.



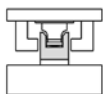
A: FIXED PIN



B: FREE SLIDING



C: SIDE ST OP



Fixed-Pin Mount

Free-Sliding Mount

Side-Stop Mount

STANDARD FEATURES

- Capacities (per module): 1125-22,500 lb (1 kN/102.1 kg-100 kN/10,205.9 kg)
- NTEP Certified load cells
- Unique design allows for thermal expansion/contraction
- Jacking screw allows empty vessel to be lifted clear of load cell for maintenance
- Unique blind load hole eliminates unwanted side and eccentric loads
- Vessel is free to slide laterally on PTFE-coated surfaces
- Load cell outputs are matched to $\pm 0.07\%$ allowing replacement without further calibration

APPLICATIONS

- Light to medium-capacity tanks and hoppers
- High-vibration mixers and blenders
- Process measurement and control

COMPLETE KIT INCLUDES

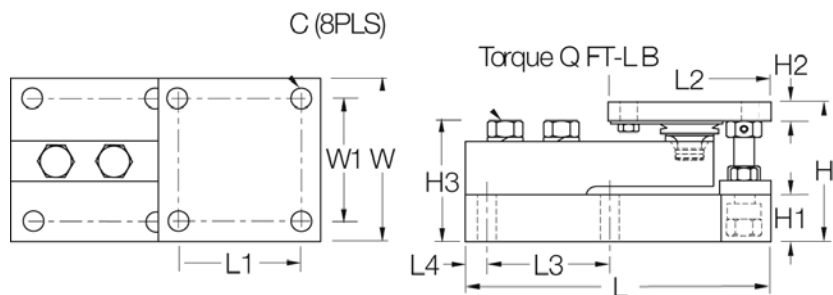
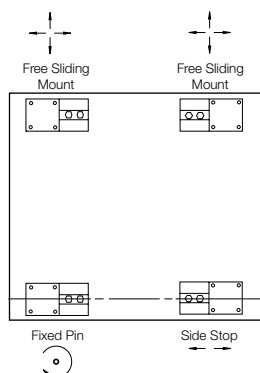
- 1 JB4SS NEMA 4X stainless steel signal trim junction box
- 1 fixed-pin module, 1 side-stop module, and 1 or 2 free-sliding assemblies. Each module is complete with a Flintec SB5 NTEP Certified 1:5000d, Class III, stainless steel environmentally-protected load cell (see page 216)
- 25 ft of our Hostile Environment EL147HE SURVIVOR® load cell cable

LOAD CELL CERTIFICATIONS



NOTE: Check with your local weights & measure officials for suitability in Legal for Trade applications.

Paramounts® EP (Environmentally-Protected) Mild Steel, Light-to Medium-Capacity Tank Weighing Systems



VESSEL ARRANGEMENT
When arranged as illustrated, the vessel is fixed at one corner but is able to slide freely as indicated. This ensures that there is minimal side loading on the cells and at the same time the vessel is self-checking. The unique, patented blind load hole technology used in these mounts introduces the load at the neutral axis of the load cell which helps minimize the effects of side loads.

DIMENSIONS

RATED CAPACITY		C	H	H1	*H2	**H2	H3	L	L1	L2	L3	L4	W	W1	Q (FT- LB)
lb/inches															
1125-4500	(5-23 kN†)	.437	3.58	1.25	.50	.75	3.06	7.51	3.00	4.00	3.00	.50	4.00	3.00	65
11,250	(50 kN†)	.562	4.66	1.50	.62	1.00	4.09	9.19	3.87	5.00	3.87	.56	5.00	3.87	295
22,500	(100 kN†)	.688	6.41	2.00	.75	1.25	5.73	11.46	4.75	6.00	4.75	.69	6.00	4.75	515
kg/mm															
510.8-2041		11.1	90.9	31.8	12.7	19.1	77.7	190.8	76.2	101.6	76.2	12.7	101.6	76.2	—
5107.5		14.3	118.4	38.1	15.7	25.4	103.9	233.4	98.3	127.0	98.3	14.2	127.0	98.3	—
10,215.0		17.5	162.8	50.8	19.1	31.8	145.5	291.1	120.7	152.4	120.7	17.5	152.4	120.7	—

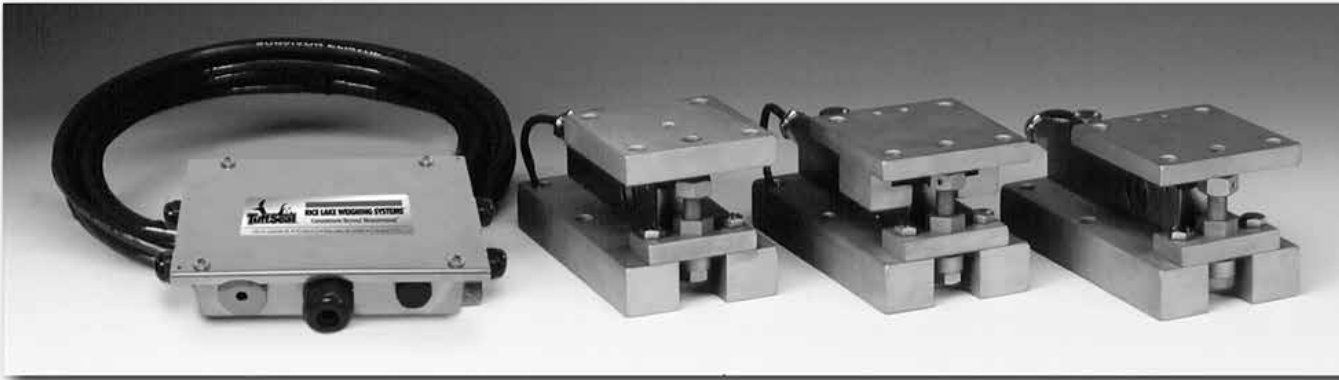
ORDER INFORMATION

LOAD RATING (PER MODULE)		PART #	PRICE
NTEP 3-Module Kits			
1125 lb	(5 kN†/510.8 kg)	33683	\$2,175.00
2250 lb	(10 kN†/1021.5 kg)	33682	2,175.00
4500 lb	(20 kN†/2041.2 kg)	33681	2,175.00
11,250 lb	(50 kN†/5107.5 kg)	33680	2,495.00
NTEP 4-Module Kits			
1125 lb	(5 kN†/510.8 kg)	33678	2,900.00
2250 lb	(10 kN†/1021.5 kg)	33677	2,900.00
4500 lb	(20 kN†/2041.2 kg)	33676	2,900.00
11,250 lb	(50 kN†/5107.5 kg)	33675	3,695.00
Non-NTEP 3-Module Kit			
22,500 lb	(100 kN†/10,205.8 kg)	33679	3,975.00
Non-NTEP 4-Module Kit			
22,500 lb	(100 kN†/10,215.0 kg)	33674	4,900.00

* Side Stop and Free Sliding Units
** Fixed Pin Units
† kN = Kilonewtons 1 kN = 224.8089 lb

Paramounts® HS (Hermetically Sealed Load Cells) Mild Steel, Light to-Medium Capacity Tank Weighing Systems

WEIGH MODULES

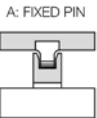
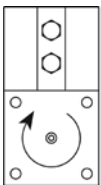
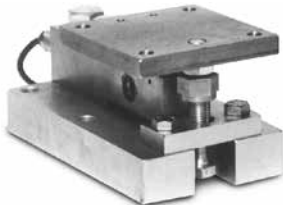


Available in configurations with three or four mounting assemblies.

Picture is a representation of actual product

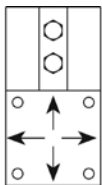
The Paramounts tank weighing system consists of one fixed-pin mount which allows only the top plate to rotate, one side-stop mount which allows the top plate to slide along the cell only, and one or more free-sliding mount(s) which allow the top plate to slide freely in all directions. This system provides self checking in applications of extreme temperature fluctuations and vibration while maintaining unparalleled system accuracy.

Free-Sliding Module with Flintec SB4 bending beam load cell.



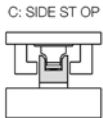
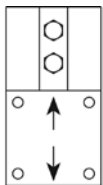
A: FIXED PIN

Fixed-Pin Mount



B: FREE SLIDING

Free-Sliding Mount



C: SIDE ST OP

Side-Stop Mount

STANDARD FEATURES

- Capacities (per module): 520-22,500 lb (2.3 kN/102.1 kg-100 kN/10,205.9 kg)
- Unique design allows for thermal expansion/contraction
- Jacking screw allows empty vessel to be lifted clear of load cell for maintenance
- Unique blind load hole eliminates unwanted side and eccentric loads
- Vessel is free to slide laterally on PTFE-coated surfaces
- Load cell outputs are matched to $\pm 0.07\%$, allowing replacement without further calibration

APPLICATIONS

- Light-to medium-capacity tanks and hoppers
- High-vibration mixers and blenders
- Process measurement and control

COMPLETE KIT INCLUDES

- 1 JB4SS NEMA 4X stainless steel signal trim junction box
- 1 fixed-pin module, 1 side-stop module, and 1 or 2 free-sliding assemblies. Each module is complete with a FLINTEC SB4 or SB10 (520 lb) stainless steel hermetically sealed load cell
- 25 ft of our Hostile Environment EL147HE SURVIVOR® load cell cable

OPTIONAL FEATURES

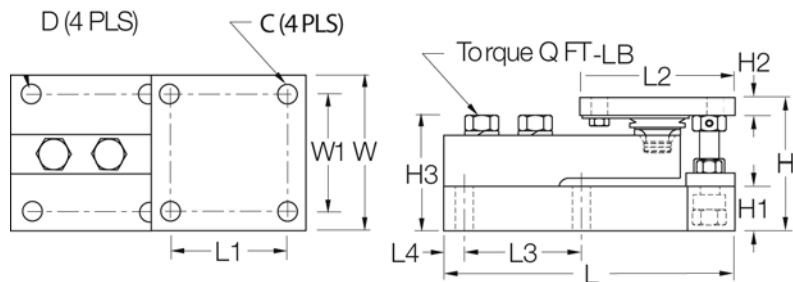
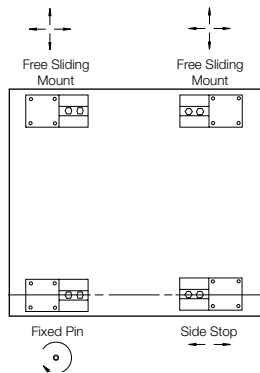
- NTEP Certified load cells available: capacities 1125-11,250 lb

LOAD CELL CERTIFICATIONS



NOTE: Check with your local weights & measure officials for suitability in Legal for Trade applications.

Paramounts® HS (Hermetically Sealed Load Cells) Mild Steel, Light to-Medium Capacity Tank Weighing Systems



VESSEL ARRANGEMENT
When arranged as illustrated, the vessel is fixed at one corner but is able to slide freely as indicated. This ensures that there is minimal side loading on the cells and at the same time the vessel is self-checking. The unique, patented blind load hole technology used in these mounts introduces the load at the neutral axis of the load cell which helps minimize the effects of side loads.

DIMENSIONS

RATED CAPACITY	C	D	H	H1	*H2	**H2	H3	L	L1	L2	L3	L4	W	W1	Q (FT- LB)
lb/inches															
520 (2.3 kN†)	.375	.437	3.49	1.00	.50	.75	2.98	7.51	3.00	4.00	3.00	.50	4.00	3.00	65
1125-5200 (5-23 kN†)	.437	.437	3.58	1.25	.50	.75	3.06	7.51	3.00	4.00	3.00	.50	4.00	3.00	65
11,250 (50 kN†)	.562	.562	4.66	1.50	.62	1.00	4.09	9.19	3.87	5.00	3.87	.56	5.00	3.87	295
22,500 (100 kN†)	.688	.688	6.41	2.00	.75	1.25	5.73	11.46	4.75	6.00	4.75	.69	6.00	4.75	515
kg/mm															
236.1	9.5	11.1	88.6	25.4	12.7	19.1	75.7	190.8	76.2	101.6	76.2	12.7	101.6	76.2	—
510.8-2360	11.1	11.1	90.9	31.8	12.7	19.1	77.7	190.8	76.2	101.6	76.2	12.7	101.6	76.2	—
5107.5	14.3	14.3	118.4	38.1	15.7	25.4	103.9	233.4	98.3	127.0	98.3	14.2	127.0	98.3	—
10,215.0	17.5	17.5	162.8	50.8	19.1	31.8	145.5	291.1	120.7	152.4	120.7	17.5	152.4	120.7	—

ORDER INFORMATION

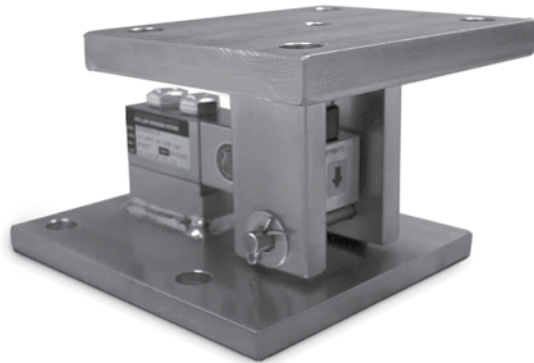
LOAD RATING (PER MODULE)	PART #	PRICE
NTEP 3-Module Kit		
1125 lb (5 kN†/510.8 kg)	29871	\$2,695.00
2250 lb (10 kN†/1021.5 kg)	29872	2,695.00
5200 lb (23 kN†/2360.8 kg)	29873	2,695.00
11,250 lb (50 kN†/5107.5 kg)	29874	3,295.00
NTEP 4-Module Kit		
1125 lb (5 kN†/510.8 kg)	29875	3,525.00
2250 lb (10 kN†/1021.5 kg)	29876	3,525.00
5200 lb (23 kN†/2360.8 kg)	29877	3,525.00
11,250 lb (50 kN†/5107.5 kg)	29878	3,895.00

* Side Stop and Free Sliding Units
** Fixed Pin units
† kN = Kilonewtons 1 kN = 224.8089 lb

ORDER INFORMATION

LOAD RATING (PER MODULE)	PART #	PRICE
Non-NTEP 3-Module Kit		
520 lb (2.3 kN†/236.1 kg)	38205	\$3,595.00
1125 lb (5 kN†/510.8 kg)	17977	2,695.00
2250 lb (10 kN†/1021.5 kg)	17978	2,695.00
5200 lb (23 kN†/2360.8 kg)	17979	2,695.00
11,250 lb (50 kN†/5107.5 kg)	17980	3,295.00
22,500 lb (100 kN†/10,215.0 kg)	17981	4,095.00
Non-NTEP 4-Module Kit		
520 lb (2.3 kN†/236.1 kg)	38206	4,795.00
1125 lb (5 kN†/510.8 kg)	17984	3,525.00
2250 lb (10 kN†/1021.5 kg)	17985	3,525.00
5200 lb (23 kN†/2360.8 kg)	17986	3,525.00
11,250 lb (50 kN†/5107.5 kg)	17987	4,095.00
22,500 lb (100 kN†/10,215.0 kg)	17988	4,995.00
**Conduit Adapter	17703	35.00

**1/2-14 NPT
*** Suitable for Flintec SB4 Load Cell

RLBTM Mild/Stainless Steel Weigh Modules

Does not include load cell.

Picture is a representation of actual product

The RLBTM mount was specifically created to take advantage of the improved load introduction accuracy of the ball and cup design. This multi-purpose mount is ideal for both indoor and outdoor applications, and can be used with a variety of single-ended beam load cells. Available in both mild and stainless steel. This product offers superior accuracy at an affordable price. These assemblies are also quick and easy to install, making the RLBTM the perfect choice for your low-capacity, multi-purpose weighing needs.

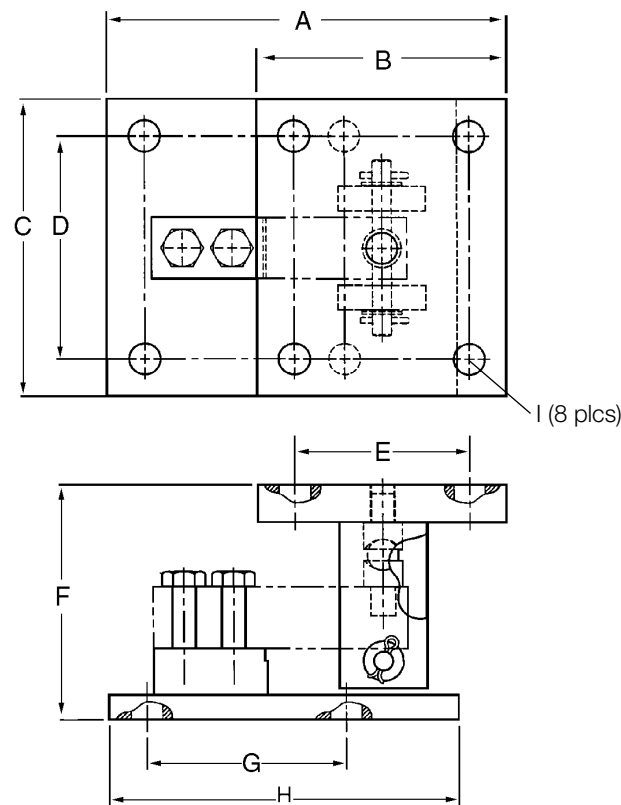
STANDARD FEATURES

- Capacities (per module): 500-5,000 lb SE mild steel/1,000-4,000 lb stainless steel
- Zinc plated mild steel construction or stainless steel
- Self-checking, multi-directional movement
- Design incorporates a ball and cup for self centering
- The RLBTM will accommodate a standard shear beam 500 lb-5,000 lb SE load cell that has a threaded load hole. RL30000 (see page 529), RL39123 (see page 532), RL35023 (see page 535), RL35082 (see page 538), RL35083 (see page 537).

APPLICATIONS

- Light to medium-capacity tanks and hoppers
- Conveyors

RLBTM Mild/Stainless Steel Weigh Modules



DIMENSIONS

RATED CAPACITY	A	B	C	D	E	F	G	H	I
lb/inches									
250-5000 SE	8.00	5.00	6.00	4.50	3.50	4.75	4.00	7.00	.63
kg/mm									
113.4/2268.0	203.2	127	152.4	114.3	88.9	120.6	101.6	177.8	16.0

MILD STEEL
ORDER INFORMATION

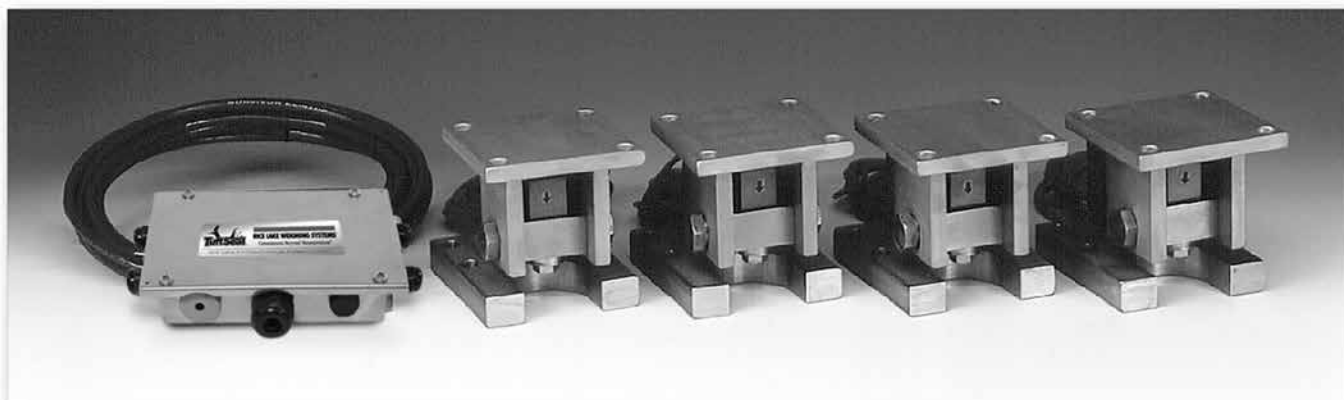
*LOAD RATING (PER MODULE)	PART #	PRICE
Single Module (Does NOT Include Load Cell)		
500 lb-5,000 lb SE (113.4-2268.0 kg)	53059	\$325.00

SE refers to small envelope
* Load Rating is per module

STAINLESS STEEL
ORDER INFORMATION

*LOAD RATING (PER MODULE)	PART #	PRICE
Single Module (Does NOT Include Load Cell)		
1,000-4,000 lb (453.6-1814.4 kg)	53066	\$515.00

RL1800 Series Mild Steel/Stainless Steel Weigh Modules



Available in configurations with three or four mounting assemblies.

Picture is a representation of actual product

The RL1800 Series Mounting Assembly Kit utilizes several Rice Lake Weighing Systems components to provide an unmatched level of performance in tank and hopper weighing applications. The RL1800 Series kit is ideally suited for indoor and outdoor process control operations with medium-range capacities. Each module combines multi-directional movement and self-checking capabilities. The RL35023 and RL35023S load cells used are NTEP certified in capacities of 1000 lb to 10,000 lb.

Module with RL35023 single-ended beam load cell. Refer to pages 535-536 for load cell specifications.



STANDARD FEATURES

- Capacities (per module): 250-10,000 lb (113.4-4535.9 kg)
- NTEP Certified cells in 1000-10,000 lb (453.6-4535.9 kg) capacities, except 3000 lb (1360.9 kg)
- Zinc plated mild steel/stainless steel construction
- Center-pivoted, tension loading design
- Self-checking, multi-directional movement
- Load is suspended on high-strength bolt instead of wire rope
- Design incorporates spherical washers for self centering
- Stainless steel kit includes RL35023S NTEP Certified load cell

APPLICATIONS

- Conveyors
- Medium-capacity tanks and hoppers

COMPLETE KIT INCLUDES

- 1 JB4SS NEMA 4X stainless steel signal trim junction box
- 3 or 4 RL1800 mild or stainless steel compression mounts
- 3 or 4 RL35023 single-ended beam load cells, RL35023S used in stainless kits (see pages 535-536)
- 25 ft of our Hostile Environment EL147HE SURVIVOR® load cell cable

LOAD CELL CERTIFICATIONS

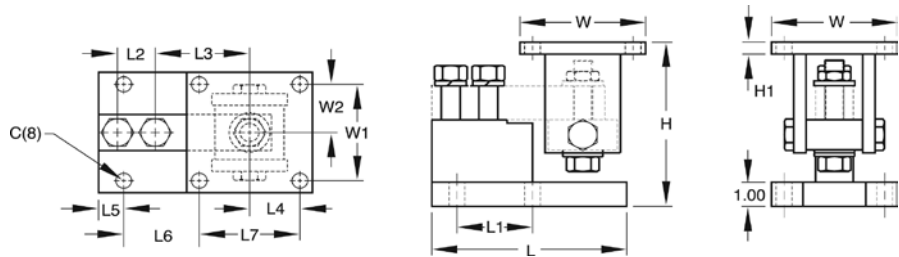


Except 520 lb



NOTE: Check with your local weights & measure officials for suitability in Legal for Trade applications.

RL1800 Series Mild Steel/Stainless Steel Weigh Modules



DIMENSIONS

RATED CAPACITY	C	H MIN/ MAX	H1	L	L1	L2	L3	L4	L5	L6	L7	W	W1	W2
Mild Steel Construction														
lb/inches														
250-5000 SE	.62	5.25/5.56	.50	6.00	2.00	1.00	3.00	2.00	.68	1.94	4.00	5.00	4.00	2.00
5000 LE-10,000	.62	6.12/6.62	.50	7.75	3.00	1.50	3.75	2.00	1.03	2.97	4.00	5.00	4.00	2.00
kg/mm														
113.4-2268.0	15.8	133.4/141.2	12.7	152.4	50.8	25.4	76.2	50.8	17.3	49.3	101.6	127.0	101.6	50.8
2268.0-4535.9	15.8	155.4/168.1	12.7	196.9	76.2	38.1	95.3	50.8	26.2	75.4	101.6	127.0	101.6	50.8
Stainless Steel Construction														
lb/inches														
1000-4000	.62	5.25/5.56	.50	6.00	2.00	1.00	3.00	2.00	.68	1.94	4.00	5.00	4.00	2.00
5000-10,000	.62	6.12/6.62	.50	7.75	3.00	1.50	3.75	2.00	1.03	2.97	4.00	5.00	4.00	2.00
kg/mm														
453.6-1814.4	15.8	133.4/141.2	12.7	152.4	50.8	25.4	76.2	50.8	17.3	49.3	101.6	127.0	101.6	50.8
2268.0-4535.9	15.8	155.4/168.1	12.7	196.9	76.2	38.1	95.3	50.8	26.2	75.4	101.6	127.0	101.6	50.8

MILD STEEL
ORDER INFORMATION

*LOAD RATING (PER MODULE)	PART #	PRICE
Single Module (Does NOT Include Load Cell)		
250-5000lb SE (113.4-2268.0 kg)	17817	\$325.00
5000 LE-10,000 lb (2268.0-4535.9 kg)	17819	350.00
3-Module Kit		
**250 lb (113.4 kg)	18075	1,995.00
**500 lb (226.8 kg)	18076	1,995.00
1000 lb (453.6 kg)	18077	1,995.00
2000 lb (907.2 kg)	18078	1,995.00
2500 lb (1134.0 kg)	18079	1,995.00
3000 lb (1360.8 kg)	18080	1,995.00
4000 lb (1814.4 kg)	18081	1,995.00
5000 lb SE (2268.0 kg)	18082	1,995.00
5000 lb LE (2268.0 kg)	18083	2,295.00
10,000 lb (4535.9 kg)	18084	2,295.00
4-Module Kit		
**250 lb (113.4 kg)	18085	2,595.00
**500 lb (226.8 kg)	18086	2,595.00
1000 lb (453.6 kg)	18087	2,595.00
2000 lb (907.2 kg)	18088	2,595.00
2500 lb (1134.0 kg)	18089	2,595.00
3000 lb (1360.8 kg)	18090	2,595.00
4000 lb (1814.4 kg)	18091	2,595.00
5000 lb SE (2268.0 kg)	18092	2,595.00
5000 lb LE (2268.0 kg)	18093	2,995.00
10,000 lb (4535.9 kg)	18094	2,995.00

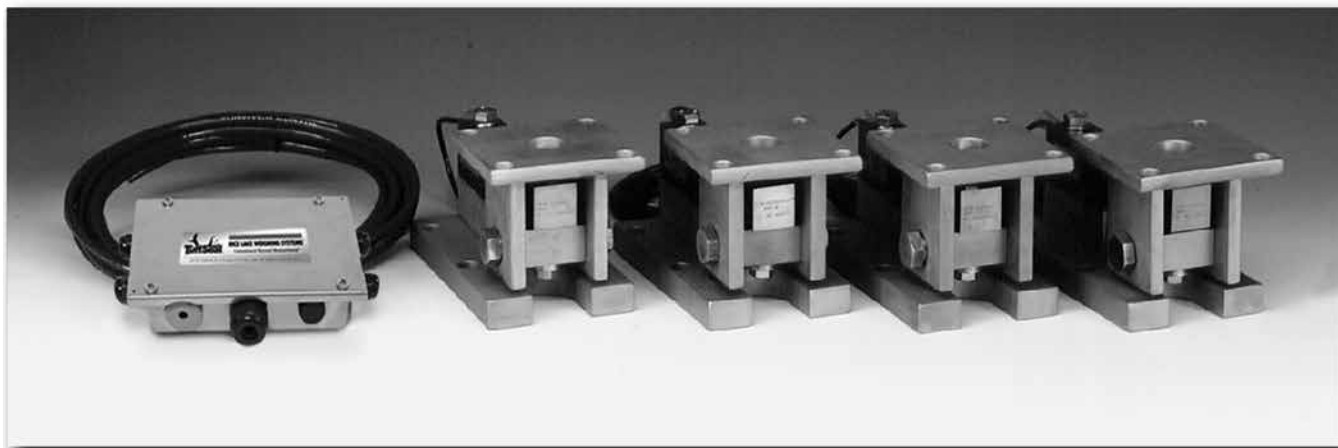
STAINLESS STEEL
ORDER INFORMATION

*LOAD RATING (PER MODULE)	PART #	PRICE
Single Module (Does NOT Include Load Cell)		
250-4000lb (113.4-1814.4 kg)	17818	\$525.00
5000-10,000 lb (2268.0-4535.9 kg)	17820	550.00
3-Module Kit		
1000 lb (453.6 kg)	18095	2,695.00
2000 lb (907.2 kg)	18096	2,695.00
2500 lb (1134.0 kg)	18097	2,695.00
4000 lb (1814.4 kg)	18099	2,695.00
5000 lb LE (2268.0 kg)	18100	2,925.00
10,000 lb (4535.9 kg)	18101	2,925.00
4-Module Kit		
1000 lb (453.6 kg)	18102	3,595.00
2000 lb (907.2 kg)	18103	3,595.00
2500 lb (1134.0 kg)	18104	3,595.00
4000 lb (1814.4 kg)	18106	3,595.00
5000 lb LE (2268.0 kg)	18107	3,910.00
10,000 lb (4535.9 kg)	18108	3,910.00
Dummy Cell		
Dummy load cell 1-5 k SE	22980	45.00

* Load Rating is per module

** Use RL30000 load cells

RL1900 Series Stainless Steel Weigh Modules



Available in configurations with three or four mounting assemblies.

Picture is a representation of actual product

The RL1900 Series Weigh Module Kit utilizes several Rice Lake Weighing Systems components to provide an unmatched level of performance in tank and hopper weighing applications. The RL1900 kit is ideally suited for tank, hopper and bin weighing operations with medium-range capacities. Each module combines multi-directional movement and self-checking capabilities. The welded seal stainless steel RLSSB load cell withstands washdown and corrosive environments that may present problems to other cells.

Module with welded-seal RLSSB single-ended beam load cell. Refer to page 541 for load cell specifications.



STANDARD FEATURES

- NTEP Certified load cells, 1:5000d, Class III Single Cell
- Capacities (per module): 1000-10,000 lb (453.6-4535.9 kg)
- 304 stainless steel construction
- Center-pivoted, tension loading design
- Welded-seal stainless steel load cells
- Self-checking, multi-directional movement
- Easy load cell replacement
- Load is suspended on high-strength bolt instead of wire rope
- Design incorporates spherical washers

APPLICATIONS

- Medium-capacity tanks, bins and hoppers
- Washdown or corrosive applications

OPTIONAL FEATURES

- Also compatible with HBM SB3 load cells
- Also compatible with RTI SSB load cells

COMPLETE KIT INCLUDES

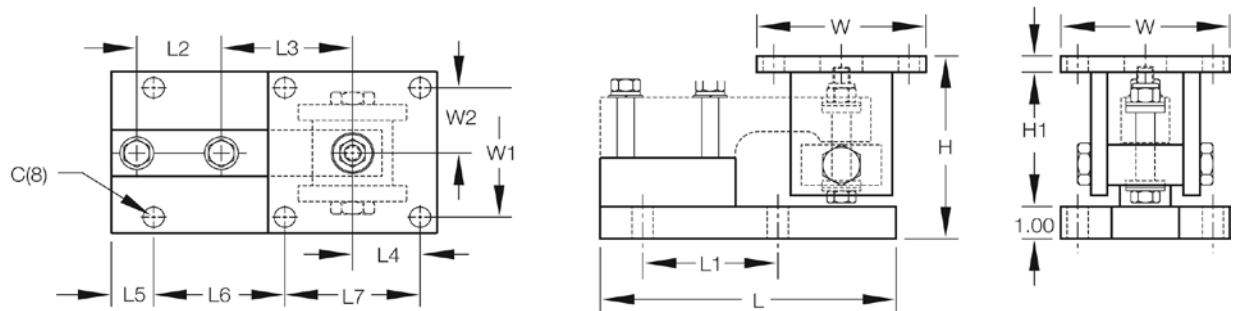
- 1 JB4SS NEMA 4X stainless steel signal trim junction box
- 3 or 4 RL1900 stainless steel compression mounts
- 3 or 4 RLSSB welded stainless steel single-ended beam load cells (see page 541)
- 25 ft of our Hostile Environment EL147HE SURVIVOR® load cell cable

LOAD CELL CERTIFICATIONS



NOTE: Check with your local weights & measure officials for suitability in Legal for Trade applications.

RL1900 Series Stainless Steel Weigh Modules



DIMENSIONS

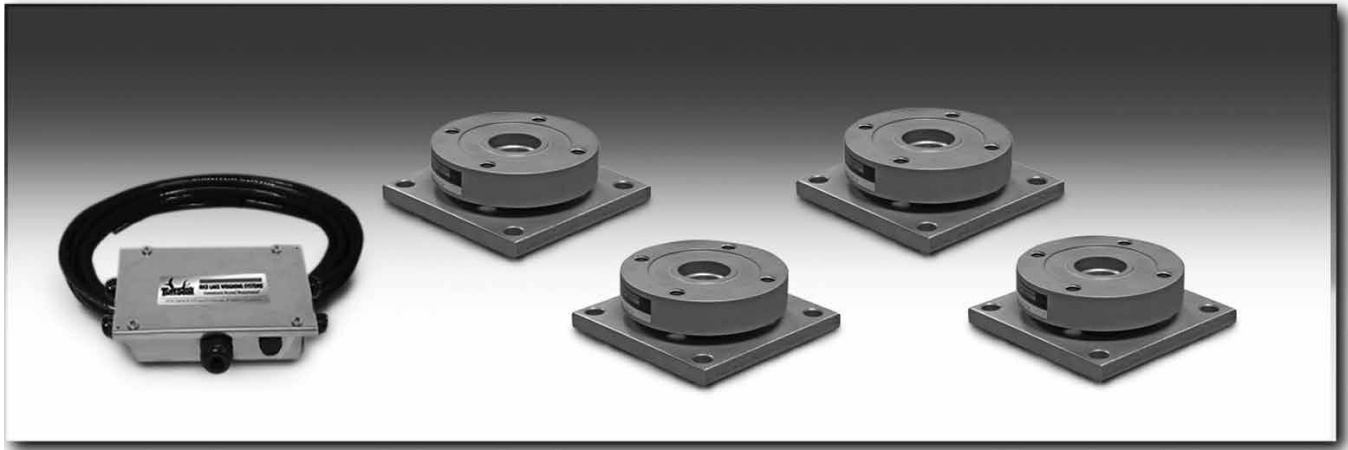
RATED CAPACITY	C	H MIN/MAX	H1	L	L1	L2	L3	L4	L5	L6	L7	W	W1	W2
lb/inches														
1000-5000	.62	5.38/5.62	.50	8.75	4.00	2.50	3.88	2.00	1.12	4.00	4.00	5.00	4.00	2.00
10,000	.81	6.88/7.50	1.00	9.75	5.00	2.63	4.88	2.25	1.00	5.00	4.50	6.00	4.50	2.25
kg/mm														
453.6-2268.0	15.8	136.7/142.9	12.7	222.3	101.6	63.5	98.6	50.8	28.4	101.6	101.6	127.0	101.6	50.8
4535.9	20.6	174.8/190.5	25.4	247.7	127.0	66.8	124.0	57.2	25.4	127.0	114.3	152.4	114.3	57.2

ORDER INFORMATION

*LOAD RATING (PER MODULE)		PART #	PRICE
Single Module (Does NOT Include Load Cell)			
1000-5000 lb	(453.6-2268.0 kg)	17841	\$575.00
10,000 lb	(4535.9 kg)	17843	625.00
3-Module Kit			
1000 lb	(453.6 kg)	18109	3,670.00
2000 lb	(907.2 kg)	18110	3,670.00
5000 lb	(2268.0 kg)	18111	3,670.00
10,000 lb	(4535.9 kg)	18112	4,085.00
4-Module Kit			
1000 lb	(453.6 kg)	18113	4,895.00
2000 lb	(907.2 kg)	18114	4,895.00
5000 lb	(2268.0 kg)	18115	4,895.00
10,000 lb	(4535.9 kg)	18116	5,415.00

* Load Rating is per module

RL9000TWM Series Tank, Hopper & Vessel Weighing Assembly



Picture is a representation of actual product

The RL9000TWM Series stainless steel weigh module is ideal for use in tank, hopper, vessel, and many other applications. The low-profile design offers an economical solutions in a competitive marketplace. This rugged, high-precision mount is designed for easy installation and does not require check rods or other stabilizing hardware. The stainless steel construction and welded seal offer additional protection in washdown areas.

Assembly with integral RL9000TWM compression disk load cell. See next page for load cell specifications.



LOAD CELL SPECIFICATIONS

Full Scale Output: 3 mv/v +/- .1%	Insulation Resistance: 5000 megohms
Bridge Resistance: 350 ohms	Seal Type: Welded seal IP 67
Material/Finish: Stainless steel*	Cable Length: 25 ft
Safe Overload: 150% F.S.	Cable Color Code: Green+ Excitation Black- Excitation White+ Signal Red- Signal
Rated Excitation: 10V DC	Warranty: Two-year limited
Operating Temperature: 0° to 150° F	

STANDARD FEATURES

- Capacities: 1000-450,000 lb
- Very low profile design
- 3 mV/V output
- Self-centering
- Self-checking assembly
- Offers 100% sideload, 100% uplift and 150% safe load and 300% ultimate overload protection
- Stainless steel construction
- Welded seal
- Weighs accurately with as much as a 3° non-parallel load
- Integral 25 ft cable

APPLICATIONS

- Tank, hopper, or vessel weighing

OPTIONAL FEATURES

- Stainless steel top plates
- *150K-450 k have mild steel painted base plate*

COMPLETE KIT INCLUDES

- 1 JB4SS NEMA 4X stainless steel signal trim junction box
- 3 or 4 stainless steel mounting assemblies
- 25 ft of our Hostile Environment EL147HE SURVIVOR® load cell cable

LOAD CELL CERTIFICATIONS



RL9000TWM Series Tank, Hopper & Vessel Weighing Assembly

ORDER INFORMATION

LOAD RATING (PER MODULE)	PART #	PRICE
Single Module		
1000 lb	84353	\$610.00
2500 lb	84354	610.00
5000 lb	84355	610.00
10,000 lb	84356	610.00
15,000 lb	84357	610.00
20,000 lb	84358	1,210.00
25,000 lb	84359	1,210.00
35,000 lb	84360	1,210.00
50,000 lb	84361	1,210.00
60,000 lb	84362	2,110.00
75,000 lb	84363	2,110.00
100,000 lb	84364	2,110.00
150,000 lb	84365	4,410.00
200,000 lb	84366	4,410.00
250,000 lb	84368	6,510.00
300,000 lb	84369	6,510.00
400,000 lb	84370	6,510.00
450,000 lb	84371	6,510.00
3-Module Kit		
1000 lb	98974	2,040.00
2500 lb	98980	2,040.00
5000 lb	98981	2,040.00
10,000 lb	98982	2,040.00
15,000 lb	98983	2,040.00
20,000 lb	98984	3,840.00
25,000 lb	98985	3,840.00
35,000 lb	98986	3,840.00
50,000 lb	98987	3,840.00
60,000 lb	98988	6,540.00
75,000 lb	98989	6,540.00
100,000 lb	98990	6,540.00
150,000 lb	98991	13,440.00
200,000 lb	98992	13,440.00
250,000 lb	98993	19,740.00
300,000 lb	98994	19,740.00
400,000 lb	98995	19,740.00
450,000 lb	98996	19,740.00

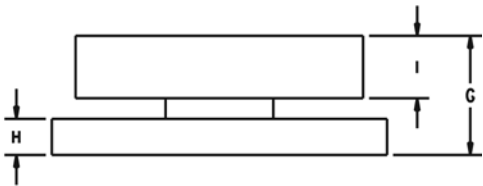
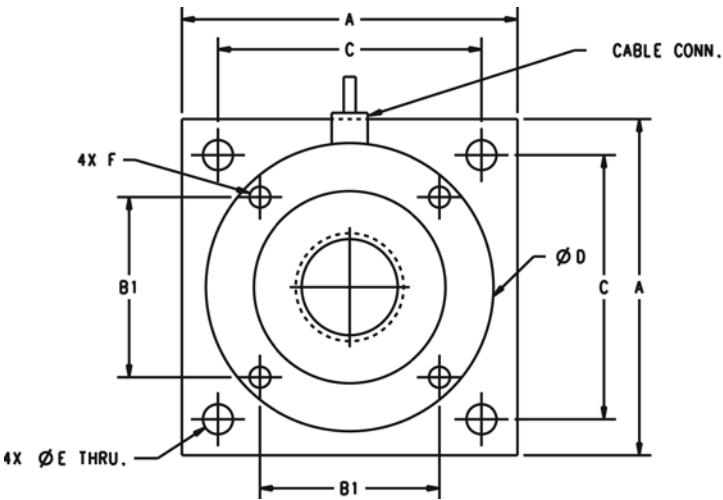
**150 k-450 k have mild steel painted base plates*

LOAD RATING (PER MODULE)	PART #	PRICE
4-Module Kit		
1000 lb	98997	\$2,555.00
2500 lb	98998	2,555.00
5000 lb	98999	2,555.00
10,000 lb	99000	2,555.00
15,000 lb	99001	2,555.00
20,000 lb	99002	4,955.00
25,000 lb	99003	4,955.00
35,000 lb	99004	4,955.00
50,000 lb	99005	4,955.00
60,000 lb	99006	8,555.00
75,000 lb	99007	8,555.00
100,000 lb	99008	8,555.00
150,000 lb	99009	17,755.00
200,000 lb	99010	17,755.00
250,000 lb	99011	26,155.00
300,000 lb	99012	26,155.00
400,000 lb	99013	26,155.00
450,000 lb	99014	26,155.00
Top Plates (Stainless Steel) with bolts		
1 k-15 k	91207	150.00
20 k-50 k	91210	325.00
60 k-100 k	91211	695.00
150 k-200 k	91213	895.00
250 k-450 k	91215	1,695.00
Top Plates (Mild Steel) with bolts		
1 k-15 k	124758	75.00
20 k-50 k	125141	145.00
60 k-100 k	124759	195.00
150 k-200 k	124760	325.00
250 k-450 k	124761	425.00
Tool, Center Bolt Removal		
151637	20-50 k	32.00
151638	60-100 k	55.00
151639	150-200 k	99.00

**150 k-450 k have mild steel painted base plates*

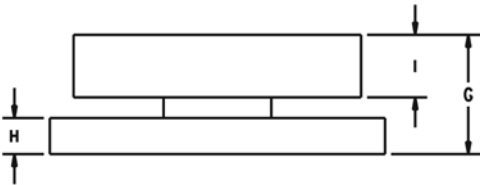
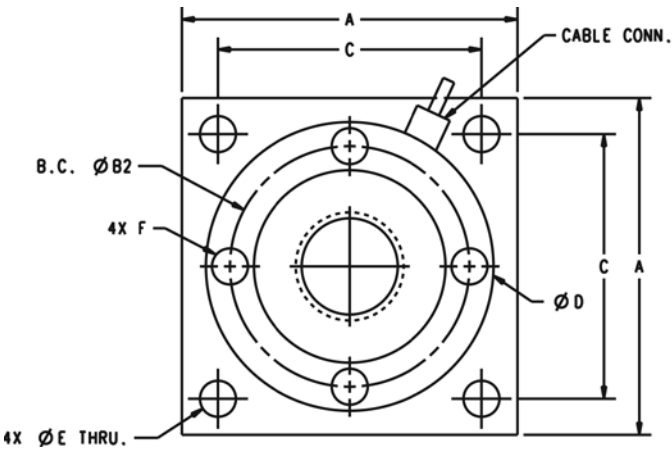
RL9000TWM Series Tank, Hopper & Vessel Weighing Assembly

WEIGH MODULES



DIMENSIONS (INCHES)

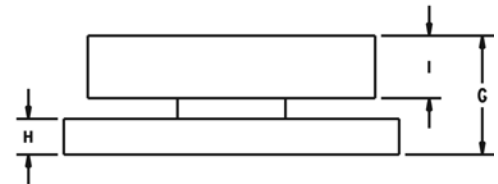
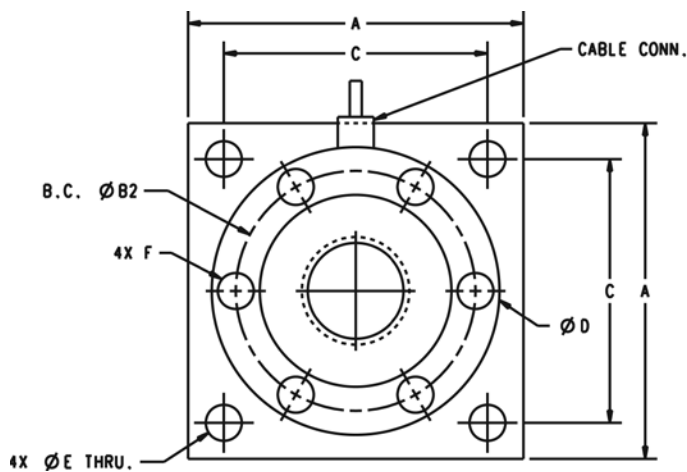
RATED CAPACITY	A	B1	C	D	E	F	G	H	I	CONDUIT ADAPTER
1k-10k	4.00	2.00	3.25	3.50	0.40	3/8-16	1.35	0.375	0.75	N/A
15k	4.00	2.00	3.25	3.50	0.40	3/8-16	1.60	0.625	0.75	N/A
20k-50k	7.00	3.75	5.50	6.00	0.63	1/2-13	2.48	0.75	1.30	1/2-14 NPT
60k-100k	8.00	4.25	6.50	7.00	0.81	3/4-16	2.50	1.00	1.30	1/2-14 NPT



DIMENSIONS (INCHES)

RATED CAPACITY	A	B2	C	D	E	F	G	H	I	CONDUIT ADAPTER
150k-200k	10.0	7.825	8.00	9.00	1.10	1-14	4.75	2.00	1.70	1/2-14 NPT

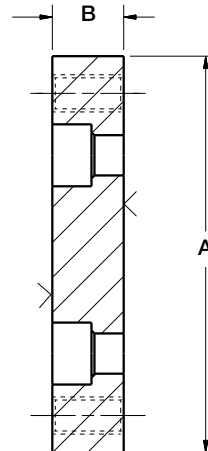
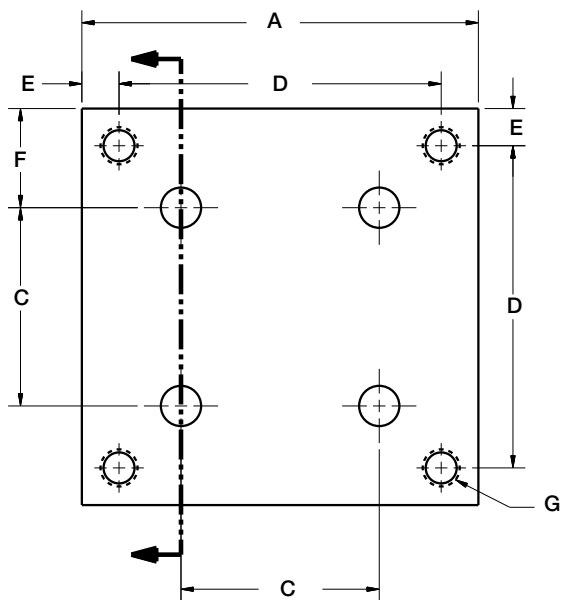
RL9000TWM Series Tank, Hopper & Vessel Weighing Assembly



DIMENSIONS (INCHES)

RATED CAPACITY	A	B2	C	D	E	F	G	H	I	CONDUIT ADAPTER
250k-450k	11.00	7.75	9.00	9.00	1.30	7/8-14	6.42	3.00	2.25	1/2-14 NPT

Optional Top Plates



DIMENSIONS

RATED CAPACITY	A	B	C	D	E	F	G
lb/inches							
1k - 15k	4.00	0.72	2.00	3.25	0.38	1.00	3/8-16 NC
20k - 50k	7.00	0.97	3.75	5.50	0.75	1.62	5/8-11 NC
60k - 100k	8.00	1.46	4.25	6.50	0.75	1.88	3/4-16 NF
150k - 200k	10.00	1.94	5.53	8.00	1.00	2.25	1-14 UNS
250k - 450k	11.00	2.94	7.75 B.C.	9.00	1.00	1.00	1-1/4-12 NF

RL9000TWM-HT Tank, Hopper & Vessel Weighing Module

WEIGH MODULES



Picture is a representation of actual product

The RL9000TWM-HT is the latest addition to the popular RL9000TWM Series weigh module. The RL9000TWM-HT is a high temperature version that is designed to operate in temperatures up to 400°F. The integral 25 ft of FEP cable compliments the RL9000TWM-HT weigh module.

ORDER INFORMATION

LOAD RATING (PER MODULE)	PART #	PRICE
Single Module		
1000 lb	117050	\$1,015.00
2500 lb	117051	1,015.00
5000 lb	117052	1,015.00
10,000 lb	117140	1,015.00
15,000 lb	117053	1,015.00
20,000 lb	117054	1,710.00
25,000 lb	117055	1,710.00
35,000 lb	117056	1,710.00
50,000 lb	117057	1,710.00
Top Plates (Stainless Steel) with bolts		
1 k-15 k	91207	150.00
20 k-50 k	91210	325.00
Top Plates (Mild Steel) with bolts		
1 k-15 k	124758	75.00
20 k-50 k	125141	145.00

STANDARD FEATURES

- Capacities: 1000-50,000 lb
- Very low profile design
- 3 mV/V output
- Self-centering
- Self-checking assembly
- Offers 100% sideload, 100% uplift and 150% safe load and 300% ultimate overload protection
- Stainless steel construction
- Welded seal
- Weighs accurately with as much as a 3° on-parallel load
- Integral 25 ft FEP cable

OPTIONAL FEATURES

- Stainless steel top plates
- Higher capacities available upon request

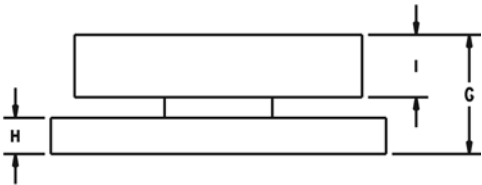
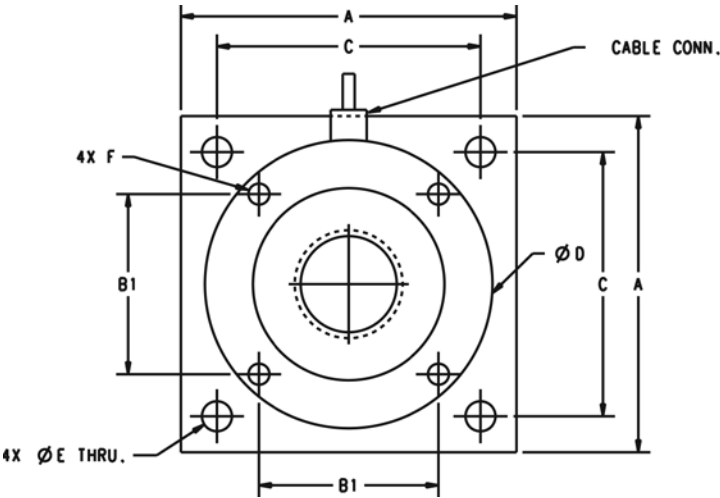
APPLICATIONS

- Tank, hopper, or vessel weighing
- High temperature applications

LOAD CELL SPECIFICATIONS

Full Scale Output: 3 mv/v +/- .1%	Seal Type: Welded seal IP67
Bridge Resistance: 700 ohms	Cable Length: 25 ft FEP Jacket
Material/Finish: Stainless steel*	Cable Color Code: Green+ Excitation Black.....- Excitation White+ Signal Red- Signal
Safe Overload: 150% F.S.	Warranty: Two-year limited
Rated Excitation: 10V DC	<i>Refer to next page for drawings</i>
Operating Temperature: 0° to 400° F	
Insulation Resistance: 5000 megohms	

RL9000TWM-HT Tank, Hopper & Vessel Weighing Module

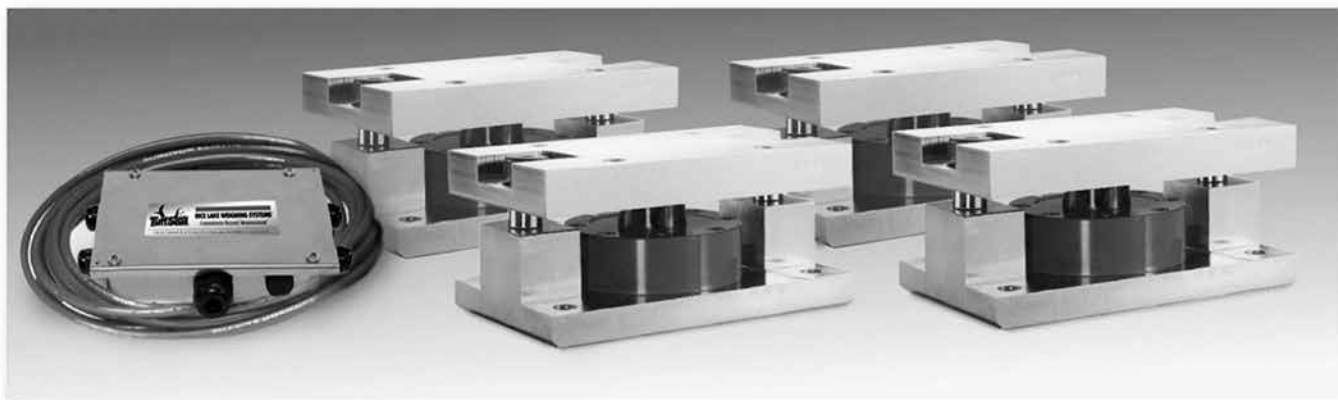


WEIGH MODULES

DIMENSIONS

RATED CAPACITY	A	B1	C	D	E	F	G	H	I	CONDUIT ADAPTER
lb/inches										
1k - 10k	4.00	2.00	3.25	3.50	0.40	3/8-16NC	1.35	0.375	0.75	—
15k	4.00	2.00	3.25	3.50	0.40	3/8-16NC	1.60	0.625	0.75	—
20k - 50k	7.00	3.75	5.50	6.00	0.63	1/2-13NC	2.48	0.750	1.30	1/2-14NPT

RL2200 Series Tank, Hopper & Vessel Weighing Assembly



Available in configurations with three or four mounting assemblies.

Picture is a representation of actual product

The RL2200 Series mounts are ideal for use in tank, hopper, vessel, and many other applications. The low-profile design allows for economical solutions in a competitive marketplace. This rugged, high-precision mount is designed for easy installation and does not require check rods or other stabilizing hardware. The RL2200 mount has the added feature of self centering, allowing for side loads without sacrificing performance.

Assembly with integral RL2200 compression disk load cell.



STANDARD FEATURES

- Capacities: 2500-50,000 lb (1134-22,680 kg)
- Low-profile design
- High 4 mV/V output (2 mV/V, 2500 lb)
- Self-centering in all directions—able to withstand excessive side loads
- Self-checking assembly

APPLICATIONS

- Tank, hopper or vessel weighing
- Belt or roller conveyors
- Scale platforms and screw feeders

COMPLETE KIT INCLUDES

- 1 JB4SS NEMA 4X stainless steel signal trim junction box
- 3 or 4 RL2200 high-alloy, zinc-plated steel mounting assemblies
- 3 or 4 RL2200 compression disk load cells
- 25 ft of our Hostile Environment EL147HE SURVIVOR® load cell cable

LOAD CELL SPECIFICATIONS

Full Scale Output:
4.0 mV/V, 2.0 mV/V (2500 lb)

Bridge Resistance:
350 ohms nominal

Material/Finish:
High-alloy steel, painted

Safe Overload:
150% Full Scale

Rated Excitation:
10VDC (20V maximum)

Nonlinearity:
0.05% Full Scale

Hysteresis:
0.03% Full Scale

Temperature:
Compensated range:
15°F to 115°F/-9°C to 46°C

Insulation Resistance:
5000 megohms

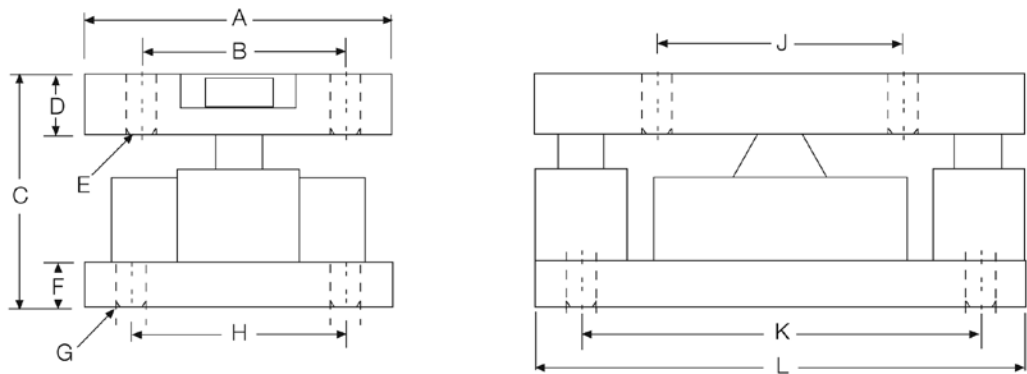
Seal Type:
Environmentally sealed

***Cable Length:**
30 ft/9.1 m

Cable Color Code:
Red+ Excitation
Black.....- Excitation
White+ Signal
Green- Signal

Warranty:
Two-year limited warranty
*Compression load application

RL2200 Series



DIMENSIONS

RATED CAPACITY	A	B	C	D	E	F	G	H	J	K	L
lb/inches											
2500-10,000	5.0	3.50	4.00	1.00	.52	1.0	.52	3.50	4.00	6.50	8.0
25,000-50,000	6.0	4.50	5.00	1.25	.78	1.0	.78	4.50	5.00	7.75	10.0
kg/mm											
1134-4536	127.0	88.9	101.6	25.4	13.2	19.0	13.2	88.9	101.6	165.1	203.2
11,340-22,679.6	152.4	114.3	127.0	31.7	19.8	25.4	19.8	114.3	127.0	196.8	254.0

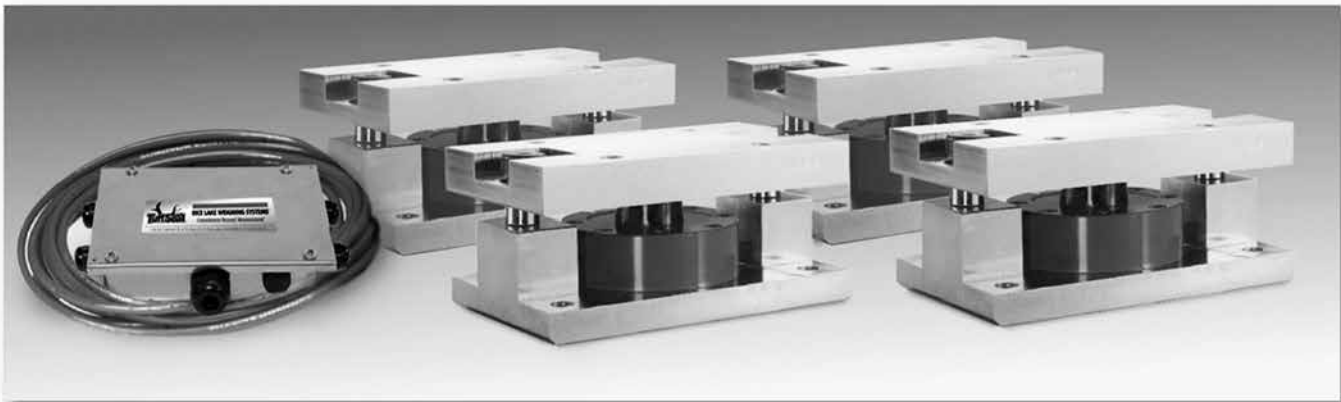
ORDER INFORMATION

LOAD RATING (PER MODULE)		PART #	PRICE
Single Module			
2500 lb	(1134 kg)	76656	\$1,575.00
5000 lb	(2268 kg)	45849	1,575.00
10,000 lb	(4536 kg)	45848	1,575.00
25,000 lb	(11,340 kg)	45847	2,075.00
50,000 lb	(22,680 kg)	45846	2,075.00
3-Module Kit			
2500 lb	(1134 kg)	76897	4,700.00
5000 lb	(2268 kg)	42811	4,700.00
10,000 lb	(4536 kg)	42812	4,700.00
25,000 lb	(11,340 kg)	42813	6,100.00
50,000 lb	(22,680 kg)	42814	6,100.00
4-Module Kit			
2500 lb	(1134 kg)	76898	6,215.00
5000 lb	(2268 kg)	42815	6,215.00
10,000 lb	(4536 kg)	42816	6,215.00
25,000 lb	(11,340 kg)	42817	7,215.00
50,000 lb	(22,680 kg)	42818	7,215.00

REPLACEMENT LOAD CELL
ORDER INFORMATION

LOAD RATING (PER MODULE)		PART #	PRICE
2500 lb	(1134 kg)	76654	\$1,225.00
5000 lb	(2268 kg)	45708	1,225.00
10,000 lb	(4536 kg)	45709	1,225.00
25,000 lb	(11,340 kg)	45710	1,525.00
50,000 lb	(22,680 kg)	45711	1,525.00

RL2200 SS Series Stainless Steel, Tank, Hopper & Vessel Weighing Assembly



Available in configurations with three or four mounting assemblies.

Picture is a representation of actual product

The RL2200 SS Series mounts are ideal for use in tank, hopper, vessel and many other applications. The low-profile design allows for economical solutions in a competitive marketplace. This rugged, high-precision mount is designed for easy installation and does not require check rods or other stabilizing hardware. The RL2200 SS mount has the added feature of self centering, allowing for side loads without sacrificing performance.

Assembly with integral RL2200 SS compression disk load cell.



APPLICATIONS

- Tank, hopper or vessel weighing
- Belt or roller conveyors
- Scale platforms and screw feeders

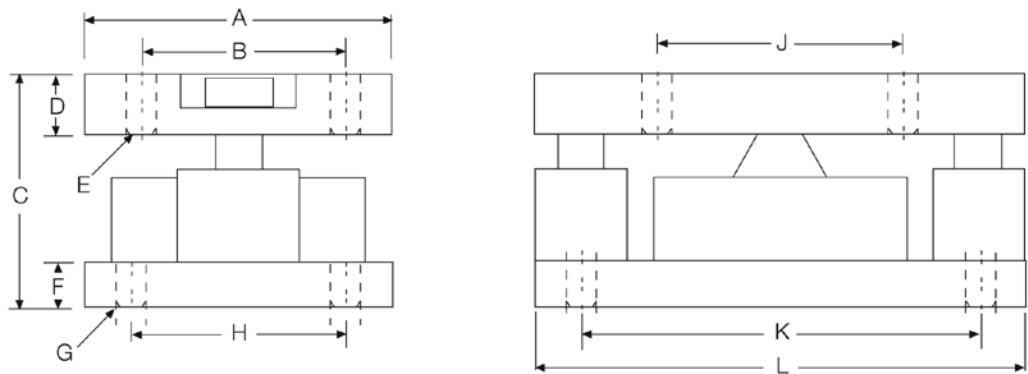
COMPLETE KIT INCLUDES

- 1 JB4SS NEMA 4X stainless steel signal trim junction box
- 3 or 4 RL2200 stainless steel mounting assemblies
- 3 or 4 RL2200 SS stainless steel, hermetically sealed, compression disk load cells
- 25 ft of our Hostile Environment EL147HE SURVIVOR® load cell cable

LOAD CELL SPECIFICATIONS

Full Scale Output: 4.0 mV/V, 2.0 mV/V (2500 lb)	Insulation Resistance: 5000 megohms
Bridge Resistance: 350 ohms nominal	Seal Type: Hermetically sealed, IP66/68
Material/Finish: Stainless steel	*Cable Length: 30 ft/9.1 m
Safe Overload: 150% Full Scale	Cable Color Code: Red+ Excitation Black.....- Excitation White+ Signal Green- Signal
Rated Excitation: 10VDC (20V maximum)	Warranty: Two-year limited warranty <i>*Compression load application</i>
Nonlinearity: 0.05% Full Scale	
Hysteresis: 0.03% Full Scale	
Temperature: Compensated range: 15°F to 115°F/9°C to 46°C	

RL2200 SS Series



DIMENSIONS

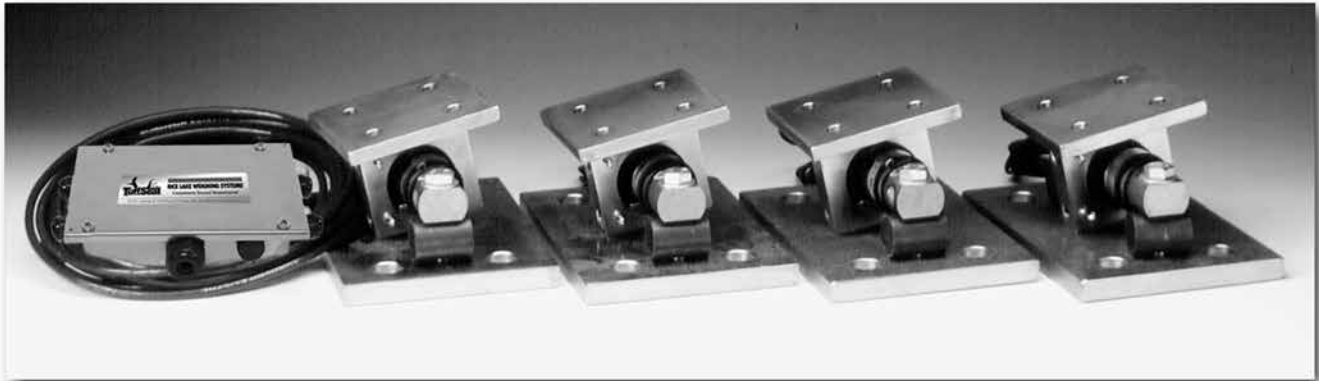
RATED CAPACITY	A	B	C	D	E	F	G	H	J	K	L
lb/inches											
2500-10,000	5.00	3.50	4.00	1.00	.52	1.00	.52	3.50	4.00	6.50	8.00
25,000-50,000	6.00	4.50	5.00	1.25	.78	1.00	.78	4.50	5.00	7.75	10.00
kg/mm											
1134-4536	127.0	88.9	101.6	25.4	13.2	19.0	13.2	88.9	101.6	165.1	203.2
11,340-22,679.6	152.4	114.3	127.0	31.7	19.8	25.4	19.8	114.3	127.0	196.8	254.0

ORDER INFORMATION

LOAD RATING (PER MODULE)		PART #	PRICE
Single Module			
2500 lb	(1134 kg)	76657	\$2,295.00
5000 lb	(2268 kg)	45845	2,295.00
10,000 lb	(4536 kg)	45844	2,295.00
25,000 lb	(11,340 kg)	45843	3,895.00
50,000 lb	(22,680 kg)	45842	3,895.00
3-Module Kit			
2500 lb	(1134 kg)	76899	6,495.00
5000 lb	(2268 kg)	46478	6,495.00
10,000 lb	(4536 kg)	46479	6,495.00
25,000 lb	(11,340 kg)	46480	11,395.00
50,000 lb	(22,680 kg)	46481	11,395.00
4-Module Kit			
2500 lb	(1134 kg)	76900	8,595.00
5000 lb	(2268 kg)	46482	8,595.00
10,000 lb	(4536 kg)	46483	8,595.00
25,000 lb	(11,340 kg)	46484	14,850.00
50,000 lb	(22,680 kg)	46485	14,850.00

REPLACEMENT LOAD CELL
ORDER INFORMATION

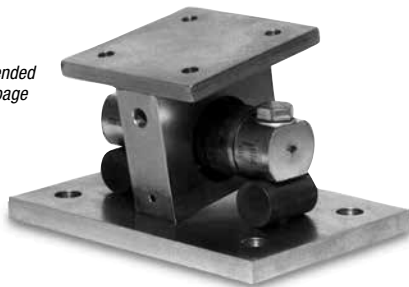
LOAD RATING (PER MODULE)		PART #	PRICE
2500 lb	(1134 kg)	76655	\$1,450.00
5000 lb	(2268 kg)	45712	1,450.00
10,000 lb	(4536 kg)	45713	1,450.00
25,000 lb	(11,340 kg)	45714	2,395.00
50,000 lb	(22,680 kg)	45715	2,395.00

EZ Mount 1 Mild Steel

Available in configurations with three or four mounting assemblies.

Picture is a representation of actual product

The EZ Mount 1 Series weigh modules utilize the double-ended beam design with an articulating top plate to provide superior accuracy in any loading condition. The double-ended beam design means there is less cumbersome hardware and each module has a lower profile than modules of different configurations. NTEP Certified and FM approved RL70000 Series load cells give you accuracy and dependability in many applications, including intrinsically safe and explosion proof areas.



Module with RL70000 double-ended shear beam load cell. Refer to page 553 for load cell specifications.

COMPLETE KIT INCLUDES

- 1 JB4SS NEMA 4X stainless steel signal trim junction box
- 3 or 4 EZ Mount 1 mild steel compression mounts
- 3 or 4 RL70000 double-ended shear beam load cells (see page 553)
- 25ft of our Hostile Environment EL147HE SURVIVOR® load cell cable

APPLICATIONS

- Medium-to heavy-capacity tank and hopper weighing applications

STANDARD FEATURES

- Capacities (per module): 5000-250,000 lb (2268-113,398.1 kg)
- NTEP Certified load cells
- Unique sliding pin design compensates for thermal expansion/contraction
- Self-checking
- Easy load cell replacement
- Simplified design allows bolting directly to tank and floor
- Center-loaded double-ended shear beam design
- Low-profile design
- Painted mild steel construction

OPTIONAL FEATURES

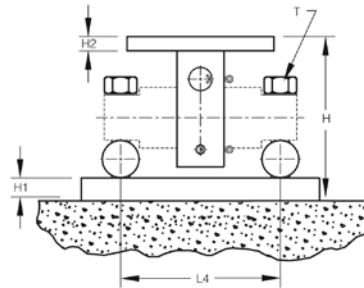
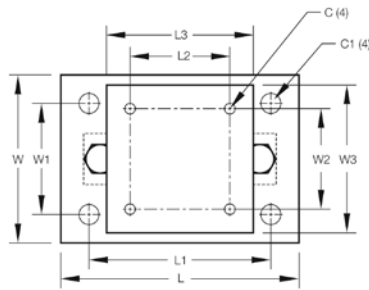
- Kits available with Revere Transducers 5103 load cell, capacities in 5000-150,000 lb (2268.0-68,039.0 kg)
- Refer to page 496 for shims

LOAD CELL CERTIFICATIONS

Rice Lake
load cells only

NOTE: Check with your local weights & measure officials for suitability in Legal for Trade applications.

EZ Mount 1 Mild Steel



DIMENSIONS

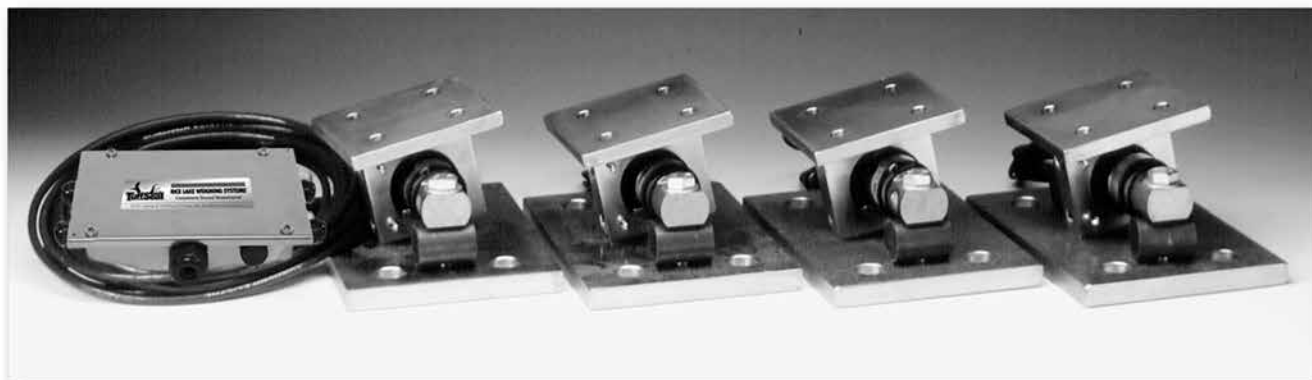
RATED CAPACITY	C	C1	H	H1	H2	L	L1	L2	L3	L4	T	W	W1	W2	W3
lb/inches															
5000-20,000	.56	1.06	5.31	.75	.50	11.00	8.00	3.00	6.00	6.87	5/8-18 UNF	7.50	4.00	3.00	6.00
30,000-60,000	.68	1.19	8.43	1.00	.75	15.00	11.50	5.12	8.00	8.50	1-14 UNS	10.00	6.00	5.12	8.00
100,000	.81	1.38	10.37	1.25	1.25	18.00	14.00	7.50	10.00	9.50	1-14 UNS	12.00	9.00	7.50	10.00
150,000	.81	1.38	10.37	1.25	1.25	18.00	14.00	7.50	10.00	9.50	1-14 UNS	12.00	9.00	7.50	10.00
200,000-250,000	1.06	1.88	16.75	2.00	2.00	26.00	20.00	9.00	12.00	13.00	1 1/2-12 UNS	12.00	6.00	9.00	12.00
kg/mm															
2268.0-9071.9	14.2	26.9	134.9	19.1	12.7	279.4	203.2	76.2	152.4	174.5	5/8-18 UNF	190.5	101.6	76.2	152.4
13,607.8-27,215.5	17.3	30.2	214.1	25.4	19.1	381.0	292.1	130.0	203.2	215.9	1-14 UNS	254.0	152.4	130.1	203.2
45,359.2	20.6	35.1	263.4	31.8	31.8	457.2	355.6	190.5	254.0	241.3	1-14 UNS	304.8	228.6	190.5	254.0
68,039.0	20.6	35.1	263.4	31.8	31.8	457.2	355.6	190.5	254.0	241.3	1-14 UNS	304.8	228.6	190.5	254.0
90,718.5-113,398.1	26.9	47.8	425.5	50.8	50.8	660.4	508.0	228.6	304.8	330.2	1 1/2-12 UNS	304.8	152.4	228.6	304.8

EZ MOUNT 1 MILD STEEL
ORDER INFORMATION

LOAD RATING (PER MODULE)		PART #	PRICE
Single Module (Does NOT Include Load Cell)			
5000-20,000 lb	(2268.0-9071.9 kg)	17823	\$295.00
30,000-60,000 lb	(13,607.8-27,215.5 kg)	17824	795.00
100,000 lb	(45,359.2 kg)	17850	1,095.00
150,000 lb	(68,039.0 kg)	29012	1,095.00
200,000-250,000 lb	(90,719-113,398.4 kg)	26068	2,495.00
3-Module Kit			
5000 lb	(2268.0 kg)	18163	2,875.00
10,000 lb	(4535.9 kg)	18164	2,875.00
20,000 lb	(9071.9 kg)	18165	2,875.00
30,000 lb	(13,607.8 kg)	32164	4,545.00
40,000 lb	(18,143.7 kg)	32167	4,545.00
50,000 lb	(22,679.6 kg)	18166	4,545.00
60,000 lb	(27,215.5 kg)	18167	4,545.00
100,000 lb	(45,359.2 kg)	18168	7,395.00
150,000 lb	(68,040 kg)	43290	7,395.00
4-Module Kit			
5000 lb	(2268.0 kg)	18169	3,735.00
10,000 lb	(4535.9 kg)	18170	3,735.00
20,000 lb	(9071.9 kg)	18171	3,735.00
30,000 lb	(13,607.8 kg)	32165	5,765.00
40,000 lb	(18,143.7 kg)	32166	5,765.00
50,000 lb	(22,679.6 kg)	18172	5,765.00
60,000 lb	(27,215.5 kg)	18173	5,765.00
100,000 lb	(45,359.2 kg)	18174	9,665.00
150,000 lb	(68,040 kg)	43291	9,665.00

RTI EZ MOUNT 1 MILD STEEL
ORDER INFORMATION

LOAD RATING (PER MODULE)		PART #	PRICE
3-Module Kit			
5000 lb	(2268.0 kg)	18175	\$2,975.00
10,000 lb	(4535.9 kg)	18176	2,975.00
20,000 lb	(9071.9 kg)	18177	2,975.00
30,000 lb	(13,607.8 kg)	32169	4,645.00
40,000 lb	(18,143.7 kg)	32171	4,645.00
50,000 lb	(22,679.6 kg)	18178	4,795.00
60,000 lb	(27,215.5 kg)	18179	4,795.00
100,000 lb	(45,359.2 kg)	18180	7,495.00
150,000 lb	(68,039.0 kg)	18181	7,495.00
4-Module Kit			
5000 lb	(2268.0 kg)	18182	3,835.00
10,000 lb	(4535.9 kg)	18183	3,835.00
20,000 lb	(9071.9 kg)	18184	3,835.00
30,000 lb	(13,607.8 kg)	32170	5,865.00
40,000 lb	(18,143.7 kg)	32172	5,865.00
50,000 lb	(22,679.6 kg)	18185	6,035.00
60,000 lb	(27,215.5 kg)	18186	6,035.00
100,000 lb	(45,359.2 kg)	18187	9,765.00
150,000 lb	(68,039.0 kg)	18188	9,765.00
Dummy Load Cells			
5000-20,000 lb		33749	75.00
30,000-60,000 lb		74016	95.00
100,000 lb		94175	150.00
150,000 lb		158715	225.00
Grounding Kit			
100,000-150,000 lb	5K-60K, includes ground strap and mounting		15.45

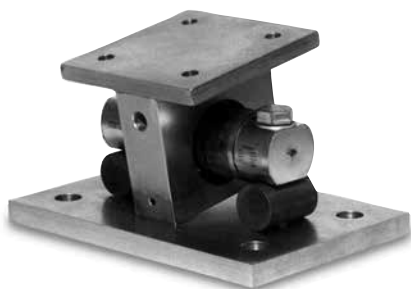
EZ Mount 1 Stainless Steel

Available in configurations with three or four mounting assemblies.

Picture is a representation of actual product

The EZ Mount 1 Series weigh modules utilize the double-ended beam design with an articulating top plate to provide superior accuracy in any loading condition. The double-ended beam design means there is less cumbersome hardware and each module has a lower profile than modules of different configurations. FM approved RL70000 SS Series load cells give you accuracy and dependability in many applications, including intrinsically safe and explosion proof areas.

Module with RL70000 SS double-ended shear beam load cell. Refer to page 554 for load cell specifications.

**COMPLETE KIT INCLUDES**

- 1 JB4SS NEMA 4X stainless steel signal trim junction box
- 3 or 4 EZ Mount 1 stainless steel compression mounts
- 3 or 4 RL70000 SS stainless steel double-ended shear beam load cells (see page 554)
- 25 ft of our Hostile Environment EL147HE SURVIVOR® load cell cable

APPLICATIONS

- Medium to heavy-capacity tank and hopper weighing applications

STANDARD FEATURES

- Capacities (per module): 5000-150,000 lb (2268-60,039.0 kg)
- Unique sliding pin design compensates for thermal expansion/contraction
- NTEP Certified load cells (10K - 100K)
- Self-checking
- Easy load cell replacement
- Simplified design allows bolting directly to tank and floor
- Center-loaded double-ended shear beam design
- Low-profile design
- 304 stainless steel construction

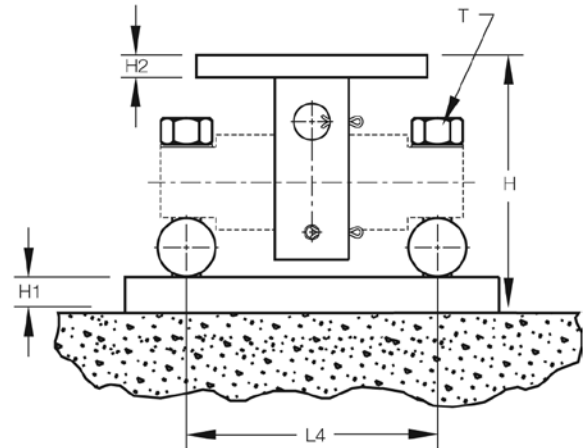
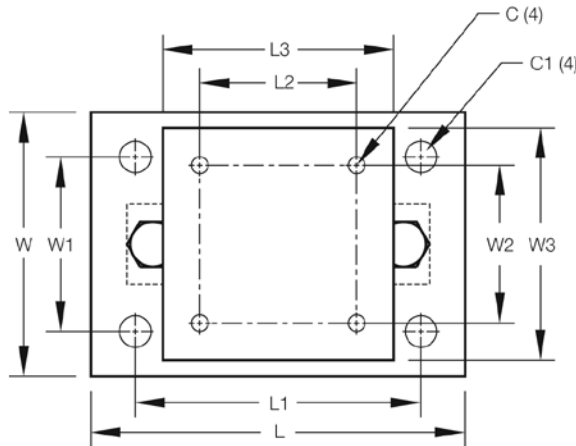
OPTIONAL FEATURES

- Kits available with Revere Transducers 9103 load cell, capacities in 5000-150,000 lb (2268.0-68,039.0 kg)
- Refer to page 496 for shims

LOAD CELL CERTIFICATIONS

NOTE: Check with your local weights & measure officials for suitability in Legal for Trade applications.

EZ Mount 1 Stainless Steel



DIMENSIONS

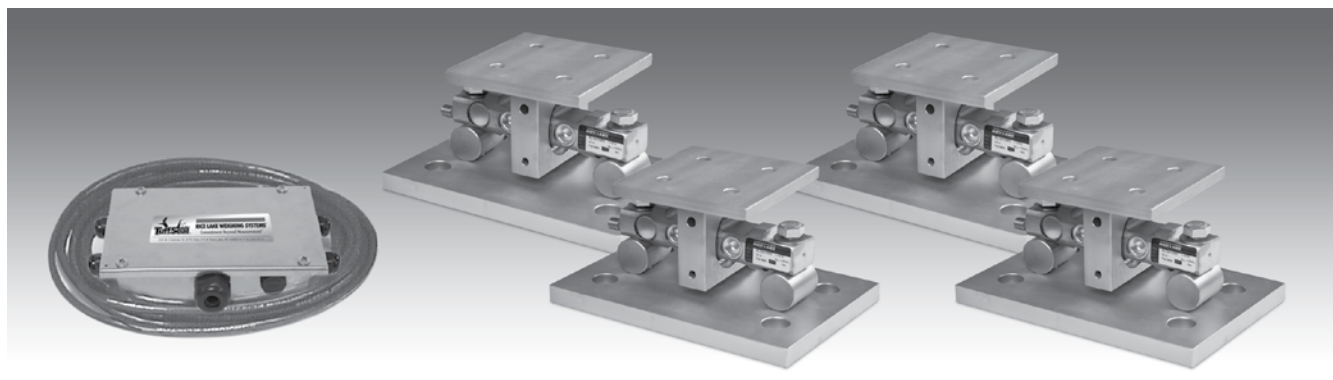
RATED CAPACITY	C	C1	H	H1	H2	L	L1	L2	L3	L4	T	W	W1	W2	W3
lb/inches															
5000-20,000	.56	1.06	5.31	.75	.50	11.00	8.00	3.00	6.00	6.87	5/8-18 UNF	7.50	4.00	3.00	6.00
30,000-60,000	.68	1.19	8.43	1.00	.75	15.00	11.50	5.12	8.00	8.50	1-14 UNS	10.00	6.00	5.12	8.00
100,000	.81	1.38	10.37	1.25	1.25	18.00	14.00	7.50	10.00	9.50	1-14 UNS	12.00	9.00	7.50	10.00
150,000	.81	1.38	10.37	1.25	1.25	18.00	14.00	7.50	10.00	9.50	1-14 UNS	12.00	9.00	7.50	10.00
kg/mm															
2268.0-9071.9	14.2	26.9	134.9	19.1	12.7	279.4	203.2	76.2	152.4	174.5	5/8-18 UNF	190.5	101.6	76.2	152.4
13,607.8-27,215.5	17.3	30.2	214.1	25.4	19.1	381.0	292.1	130.0	203.2	215.9	1-14 UNS	254.0	152.4	130.1	203.2
45,359.2	20.6	35.1	263.4	31.8	31.8	457.2	355.6	190.5	254.0	241.3	1-14 UNS	304.8	228.6	190.5	254.0
68,039.0	20.6	35.1	263.4	31.8	31.8	457.2	355.6	190.5	254.0	241.3	1-14 UNS	304.8	228.6	190.5	254.0

ORDER INFORMATION

LOAD RATING (PER MODULE)	PART #	PRICE
Single Module (Does NOT Include Load Cell)		
5000-20,000 lb (2268.0-9071.9 kg)	17943	\$725.00
30,000-60,000 lb (13,607.8-27,215.5 kg)	17944	1,995.00
100,000 lb (45,359.2 kg)	17945	3,695.00
150,000 lb (68,039.0 kg)	29011	3,695.00
3-Module Kit		
5000 lb (2268.0 kg)	36195	4,325.00
10,000 lb (4535.9 kg)	36196	4,325.00
20,000 lb (9071.9 kg)	36197	4,325.00
30,000 lb (13,607.8 kg)	36198	8,295.00
40,000 lb (18,143.7 kg)	36199	8,295.00
50,000 lb (22,679.6 kg)	36200	8,395.00
60,000 lb (27,215.5 kg)	36201	8,395.00
100,000 lb (45,359.2 kg)	36202	13,295.00
150,000 lb (68,039.0 kg)	43288	13,295.00

ORDER INFORMATION

LOAD RATING (PER MODULE)	PART #	PRICE
4-Module Kit		
5000 lb (2268.0 kg)	36203	\$5,800.00
10,000 lb (4535.9 kg)	36204	5,800.00
20,000 lb (9071.9 kg)	36205	5,800.00
30,000 lb (13,607.8 kg)	36206	11,275.00
40,000 lb (18,143.7 kg)	36207	11,275.00
50,000 lb (22,679.6 kg)	36208	11,550.00
60,000 lb (27,215.5 kg)	36209	11,550.00
100,000 lb (45,359.2 kg)	36210	17,650.00
150,000 lb (68,039.0 kg)	43289	17,650.00
Dummy Load Cells (Mild Steel)		
5000-20,000 lb —	33749	75.00
30,000-60,000 lb —	74016	95.00
100,000 lb —	94175	150.00
150,000 lb —	158715	225.00

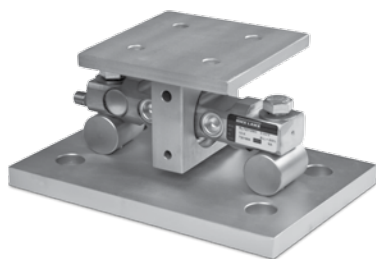
EZ Mount 1 HE Stainless Steel, Hermetically sealed

Available in configurations with three or four mounting assemblies.

Picture is a representation of actual product

The EZ Mount 1 HE Series weigh modules utilize the double-ended beam design with an articulating top plate to provide superior accuracy in any loading condition. The double-ended beam design means there is less cumbersome hardware and each module has a lower profile than modules of different configurations. The RL72010 MH Series load cells give you accuracy and dependability in any environment. Their stainless steel, hermetically sealed design also make them the ideal solution in harsh environments where moisture is present.

Module with RL72010MH double-ended shear beam load cell. Refer to page 556 for load cell specifications.

**COMPLETE KIT INCLUDES**

- 1 JB4SS NEMA 4X stainless steel signal trim junction box
- 3 or 4 EZ Mount 1 stainless steel compression mounts
- 3 or 4 RL72010 MH hermetically sealed stainless steel double-ended shear beam load cells
- 25 ft of our Hostile Environment EL147HE SURVIVOR® load cell cable

APPLICATIONS

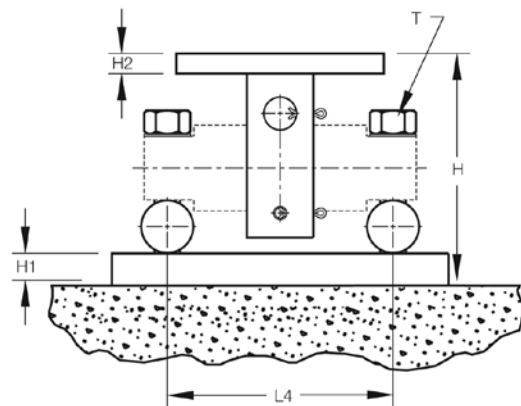
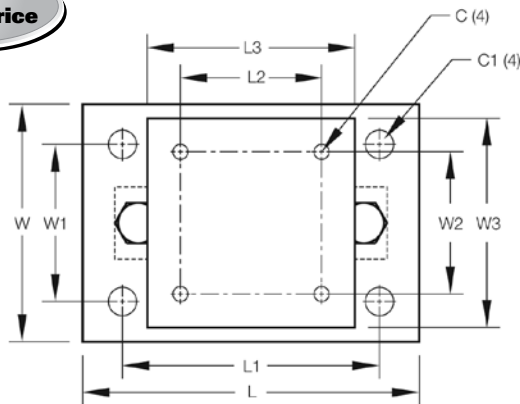
- Medium to heavy-capacity tank and hopper weighing applications

STANDARD FEATURES

- Capacities (per module): 5000-60,000 lb (2268-27,216.0 kg)
- Unique sliding pin design compensates for thermal expansion/contraction
- Self-checking
- Easy load cell replacement
- Simplified design allows bolting directly to tank and floor
- Center-loaded, double-ended shear beam design
- Low-profile design
- 304 stainless steel construction

LOAD CELL CERTIFICATIONS

EZ Mount 1 HE Stainless Steel, Hermetically Sealed



DIMENSIONS

RATED CAPACITY	C	C1	H	H1	H2	L	L1	L2	L3	L4	T	W	W1	W2	W3
lb/inches															
5000-20,000	.56	1.06	5.31	.75	.50	11.00	8.00	3.00	6.00	6.87	5/8-18 UNF	7.50	4.00	3.00	6.00
30,000-60,000	.68	1.19	8.43	1.00	.75	15.00	11.50	5.12	8.00	8.50	1-14 UNS	10.00	6.00	5.12	8.00
kg/mm															
2268.0-9071.9	14.2	26.9	134.9	19.1	12.7	279.4	203.2	76.2	152.4	174.5	5/8-18 UNF	190.5	101.6	76.2	152.4
13,607.8-27,215.5	17.3	30.2	214.1	25.4	19.1	381.0	292.1	130.0	203.2	215.9	1-14 UNS	254.0	152.4	130.1	203.2

NOTES: • Mounting bolts (T) may project on lower side of base plate • Foundation plate not included

ORDER INFORMATION

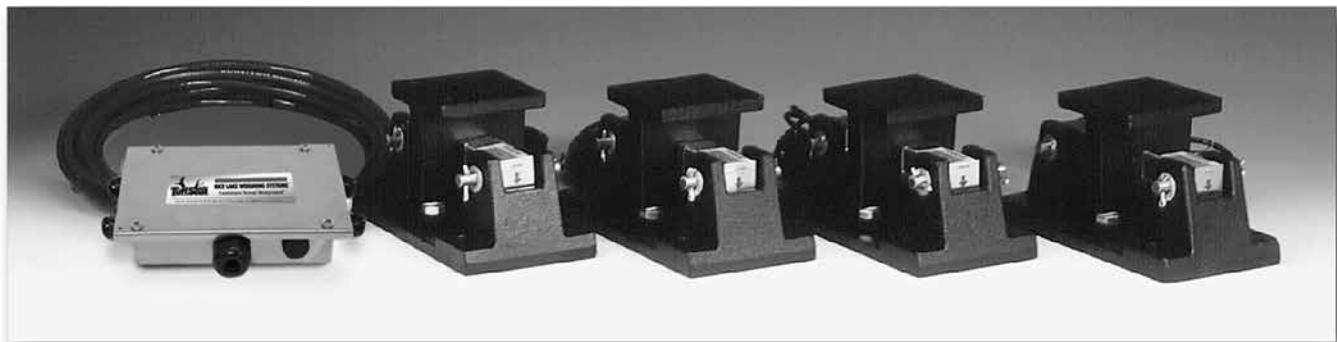
LOAD RATING (PER MODULE)		PART #	PRICE
3-Module Kit			
5000 lb	(2268.0 kg)	46695	\$5,595.00
10,000 lb	(4535.9 kg)	46696	5,595.00
20,000 lb	(9071.9 kg)	46697	5,595.00
30,000 lb	(13,607.8 kg)	46698	10,595.00
40,000 lb	(18,143.7 kg)	46699	10,595.00
50,000 lb	(22,679.6 kg)	46700	10,595.00
60,000 lb	(27,215.5 kg)	46701	10,595.00
4-Module Kit			
5000 lb	(2268.0 kg)	46702	7,495.00
10,000 lb	(4535.9 kg)	46703	7,495.00
20,000 lb	(9071.9 kg)	46704	7,495.00
30,000 lb	(13,607.8 kg)	46705	13,995.00
40,000 lb	(18,143.7 kg)	46706	13,995.00
50,000 lb	(22,679.6 kg)	46707	13,995.00
60,000 lb	(27,215.5 kg)	46708	13,995.00
Dummy Load Cells (Mild Steel)			
5000-20,000 lb	(2268.0-9071.9 kg)	33749	75.00
30,000-60,000 lb	(13,607.8-27,215.5 kg)	74016	95.00

SHIMS

	PART #	PRICE
STAINLESS STEEL		
5K-20K		
0.0625 in	150886	\$7.25
0.125 in	150888	11.50
0.250 in	150889	24.00
30K-60K		
0.0625 in	150890	12.75
0.125 in	150891	20.50
0.250 in	150892	57.00
100K-150K		
0.0625 in	150893	20.25
0.125 in	150894	32.50
0.250 in	150896	89.00
MILD STEEL		
5K-20K		
0.0625 in	150874	1.75
0.125 in	150876	3.50
0.250 in	150877	3.75
30K-60K		
0.0625 in	150878	3.50
0.125 in	150880	6.00
0.250 in	150881	6.50
100K-150K		
0.0625 in	150882	5.50
0.125 in	150884	9.50
0.250 in	150885	10.25

RL1600 Series Cast Iron

WEIGH MODULES

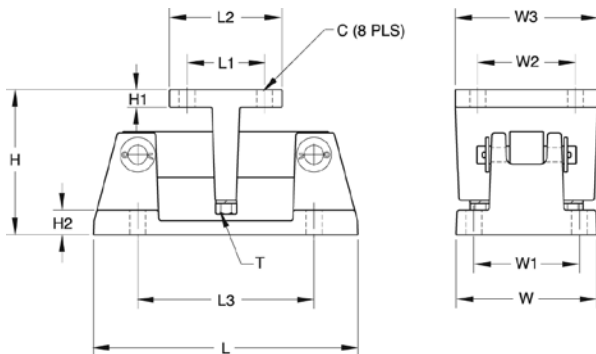


Available in configurations with three or four mounting assemblies.

Picture is a representation of actual product

The RL1600 Series Mounting Module Kit utilizes several Rice Lake Weighing Systems components to provide an unmatched level of performance in tank and hopper weighing applications. The RL1600 Series kit is ideally suited for indoor and outdoor process control operations in the medium-to high-capacity ranges. Each module incorporates self-checking capabilities for thermal expansion and contraction.

Cast iron module with
RL75016 double-ended beam
load cell. Refer to page 557
for load cell specifications.



DIMENSIONS

RATED CAPACITY	C	H	H1	H2	L	L1	L2	L3	T	W	W1	W2	W3
lb/inches													
1000-5000	.56	5.00	.50	.50	9.31	2.75	4.00	6.25	1/2-13 UNC	5.00	3.75	2.75	4.00
10,000-25,000	.78	7.89	.75	.75	12.00	6.00	8.00	7.50	3/4-10 UNC	8.00	6.00	6.00	8.00
kg/mm													
453.6-2268.0	14.2	127.0	12.7	12.7	236.5	69.9	101.6	158.8	1/2-13 UNC	127.0	95.3	69.9	101.6
4535.9-11,339.8	19.8	200.4	19.1	19.1	304.8	152.4	203.2	190.5	3/4-10 UNC	203.2	152.4	152.4	203.2

COMPLETE KIT INCLUDES

- 1 JB4SS NEMA 4X stainless steel signal trim junction box
- 3 or 4 RL1600 cast iron compression mounts
- 3 or 4 RL75016 double-ended shear beam load cells (see page 557)
- 25 ft of our Hostile Environment EL147HE SURVIVOR® load cell cable

APPLICATIONS

- Medium to heavy-capacity tanks, bins, and hoppers
- Bulk material management

STANDARD FEATURES

- Capacities (per module): 1000-25,000 lb (453.6-11,339.8 kg)
- Cast iron construction
- Self-checking easy-to-use design allows module to be bolted directly to tank leg without requiring additional mounting plates or load buttons
- Environmentally protected load cells
- Double-ended beam design, center loaded

OPTIONAL FEATURES

- Kits available with Vishay Sensortronics 65016 load cells, capacities (per module): 1000-25,000 lb (453.6-11,339.8 kg)

LOAD CELL CERTIFICATIONS



RL1600 Series Cast Iron

ORDER INFORMATION

LOAD RATING (PER MODULE)		PART #	PRICE
Single Module (Does NOT Include Load Cell)			
1000-5000 lb	(453.6-2268.0 kg)	17964	\$150.00
10,000-25,000 lb	(4535.9-11,339.8 kg)	17965	290.00
3-Module Kit			
1000 lb	(453.6 kg)	25663	1,995.00
1500 lb	(680.4 kg)	25664	1,995.00
2000 lb	(907.2 kg)	25665	1,995.00
2500 lb	(1134.0 kg)	25666	1,995.00
3000 lb	(1360.8 kg)	25667	1,995.00
5000 lb	(2268.0 kg)	25668	1,995.00
10,000 lb	(4535.9 kg)	25669	2,595.00
15,000 lb	(6803.9 kg)	25671	2,595.00
20,000 lb	(9071.9 kg)	25672	2,595.00
25,000 lb	(11,339.8 kg)	25674	2,595.00
4-Module Kit			
1000 lb	(453.6 kg)	25675	2,550.00
1500 lb	(680.4 kg)	25676	2,550.00
2000 lb	(907.2 kg)	25677	2,550.00
2500 lb	(1134.0 kg)	25678	2,550.00
3000 lb	(1360.8 kg)	25679	2,550.00
5000 lb	(2268.0 kg)	25680	2,550.00
10,000 lb	(4535.9 kg)	25681	3,350.00
15,000 lb	(6803.9 kg)	25682	3,350.00
20,000 lb	(9071.9 kg)	25683	3,350.00
25,000 lb	(11,339.8 kg)	25684	3,350.00

LOAD CELL UPGRADE

RL75016SS Stainless Load Cells
3 mount kits \$75.00 added to list price
4 mount kits \$100.00 added to list price
RL75016WHE Stainless Hermetic Load Cells
3 mount kits 1k-5k \$390.00, 10k-25k \$435.00 added to list price
4 mount kits 1k-5k \$520.00, 10k-25k \$580.00 added to list price

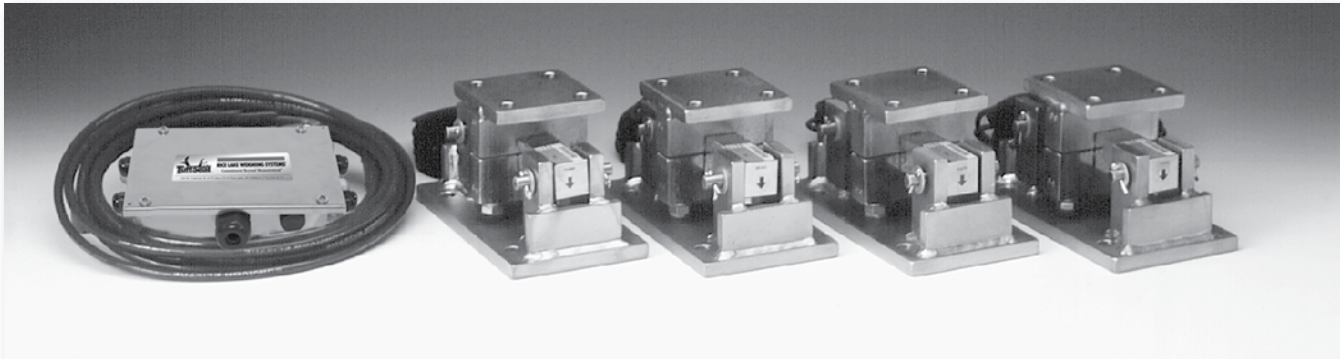
VISHAY SENSORTRONICS 65016
ORDER INFORMATION

LOAD RATING (PER MODULE)		PART #	PRICE
3-Module Kit			
1000 lb	(453.6 kg)	25685	\$2,350.00
1500 lb	(680.4 kg)	25686	2,350.00
2500 lb	(1134.0 kg)	25688	2,350.00
5000 lb	(2268.0 kg)	25690	2,350.00
10,000 lb	(4535.9 kg)	25691	2,950.00
15,000 lb	(6803.9 kg)	25692	2,950.00
20,000 lb	(9071.9 kg)	25693	2,950.00
25,000 lb	(11,339.8 kg)	25694	2,950.00
4-Module Kit			
1000 lb	(453.6 kg)	25695	3,050.00
1500 lb	(680.4 kg)	25696	3,050.00
2500 lb	(1134.0 kg)	25698	3,050.00
5000 lb	(2268.0 kg)	25700	3,050.00
10,000 lb	(4535.9 kg)	25701	3,875.00
15,000 lb	(6803.9 kg)	25702	3,875.00
20,000 lb	(9071.9 kg)	25703	3,875.00
25,000 lb	(11,339.8 kg)	25704	3,875.00
Dummy Load Cells			
1000-5000 lb	(453.6-2268.0 kg)	18236	20.00
10,000-25,000 lb	(4535.9-11,339.8 kg)	18237	35.00
Equalizer Pads			
1000 lb-5000 lb			Consult
10,000 lb-25,000 lb			Consult

SHIMS, MILD STEEL

		PART #	PRICE
1K-5K			
0.0625		150844	\$1.00
0.125		150845	1.50
0.250		150846	1.75
10K-25K			
0.0625		150847	3.50
0.125		150848	6.00
0.250		150849	6.50

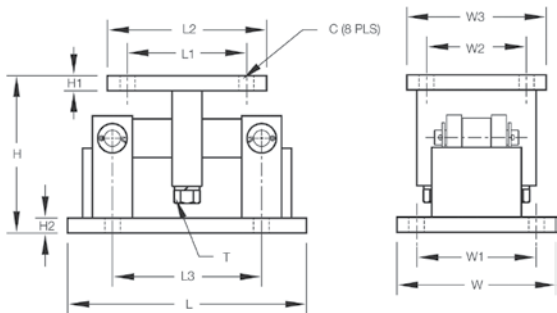
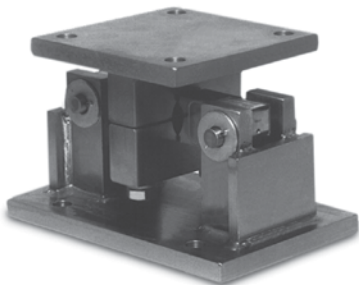
RL1600 Series Mild Steel



Available in configurations with three or four mounting assemblies.
Picture is a representation of actual product

The RL1600 Series Mounting Module Kit utilizes several Rice Lake Weighing Systems components to provide an unmatched level of performance in tank and hopper weighing applications. The RL1600 Series kit is ideally suited for indoor and outdoor process control operations in the medium-to high-capacity ranges. Each module incorporates self-checking capabilities for thermal expansion and contraction.

Mild steel module with RL75016 double-ended beam load cell.
Refer to page 557 for load cell specifications.



DIMENSIONS

RATED CAPACITY	C	H	H1	H2	L	L1	L2	L3	T	W	W1	W2	W3
lb/inches													
1000-5000	.56	5.00	.50	.50	9.25	2.75	4.00	6.25	1/2-13 UNC	5.00	3.75	2.75	4.00
10,000-25,000	.78	7.87	.75	.75	12.00	6.00	8.00	7.50	3/4-10 UNC	8.00	6.00	6.00	8.00
50,000-75,000	.78	9.31	1.00	1.00	16.25	6.50	9.00	11.50	1 1/4-7 UNC	12.00	9.50	6.50	9.00
kg/mm													
453.6-2268.0	14.2	127.0	12.7	12.7	235.0	69.9	101.6	158.8	1/2-13 UNC	127.0	95.3	69.9	101.6
4535.9-11,339.8	19.8	199.9	19.1	19.1	304.8	152.4	203.2	190.5	3/4-10 UNC	203.2	152.4	152.4	203.2
22,679.7-34,019.5	19.8	238.5	25.4	25.4	412.8	165.1	228.6	282.1	1 1/4-7 UNC	281.2	211.0	165.1	228.6

COMPLETE KIT INCLUDES

- 1 JB4SS NEMA 4X stainless steel signal trim junction box
- 3 or 4 RL1600 mild steel compression mounts
- 3 or 4 RL75016 double-ended shear beam load cells (see page 557)
- 25 ft of our Hostile Environment EL147HE SURVIVOR® load cell cable

APPLICATIONS

- Medium-to heavy-capacity tanks, bins and hoppers
- Bulk material management

STANDARD FEATURES

- Capacities (per module): 1000-75,000 lb (453.6-34,019.5 kg)
- Self-checking, easy-to-use design allows module to be bolted directly to tank leg without requiring additional mounting plates or load buttons
- Environmentally protected load cells
- Double-ended shear beam design, center loaded
- Painted mild steel construction

OPTIONAL FEATURES

- Kits available with Vishay Sensortronics 65016 load cells, capacities (per module): 1000-75,000 lb (453.6-34,019.5 kg)

LOAD CELL CERTIFICATIONS



RL1600 Series Mild Steel

ORDER INFORMATION

LOAD RATING (PER MODULE)		PART #	PRICE
Single Module (Does NOT Include Load Cell)			
1000-5000 lb	(453.6-2268.0 kg)	17812	\$150.00
10,000-25,000 lb	(4535.9-11,339.8 kg)	17814	290.00
50,000 lb	(22,679.6 kg)	17816	975.00
75,000 lb	(34,019.5 kg)	25346	975.00
3-Module Kit			
1000 lb	(453.6 kg)	18117	1,995.00,
1500 lb	(680.4 kg)	18118	1,995.00
2000 lb	(907.2 kg)	18119	1,995.00
2500 lb	(1134.0 kg)	18120	1,995.00
3000 lb	(1360.8 kg)	18121	1,995.00
5000 lb	(2268.0 kg)	18122	1,995.00
10,000 lb	(4535.9 kg)	18123	2,595.00
15,000 lb	(6803.9 kg)	18124	2,595.00
20,000 lb	(9071.9 kg)	18125	2,595.00
25,000 lb	(11,339.8 kg)	18126	2,595.00
50,000 lb	(22,679.6 kg)	18127	5,350.00
75,000 lb	(34,019.5 kg)	25348	5,350.00
4-Module Kit			
1000 lb	(453.6 kg)	18129	2,550.00
1500 lb	(680.4 kg)	18130	2,550.00
2000 lb	(907.2 kg)	18131	2,550.00
2500 lb	(1134.0 kg)	18132	2,550.00
3000 lb	(1360.8 kg)	18133	2,550.00
5000 lb	(2268.0 kg)	18134	2,550.00
10,000 lb	(4535.9 kg)	18135	3,350.00
15,000 lb	(6803.9 kg)	18136	3,350.00
20,000 lb	(9071.9 kg)	18137	3,350.00
25,000 lb	(11,339.8 kg)	18138	3,350.00
50,000 lb	(22,679.6 kg)	18139	7,150.00
75,000 lb	(34,019.5 kg)	25349	7,150.00

VISHAY SENSORTRONICS 65016
ORDER INFORMATION

LOAD RATING (PER MODULE)		PART #	PRICE
3-Module Kit			
1000 lb	(453.6 kg)	18189	\$2,350.00
1500 lb	(680.4 kg)	18190	2,350.00
2500 lb	(1134.0 kg)	18192	2,350.00
5000 lb	(2268.0 kg)	18194	2,350.00
10,000 lb	(4535.9 kg)	18195	2,950.00
15,000 lb	(6803.9 kg)	18196	2,950.00
20,000 lb	(9071.9 kg)	18197	2,950.00
25,000 lb	(11,339.8 kg)	18198	2,950.00
50,000 lb	(22,679.6 kg)	18199	5,795.00
75,000 lb	(34,019.5 kg)	25350	5,795.00
4-Module Kit			
1000 lb	(453.6 kg)	18201	3,050.00
1500 lb	(680.4 kg)	18202	3,050.00
2500 lb	(1134.0 kg)	18204	3,050.00
5000 lb	(2268.0 kg)	18206	3,050.00
10,000 lb	(4535.9 kg)	18207	3,875.00
15,000 lb	(6803.9 kg)	18208	3,875.00
20,000 lb	(9071.9 kg)	18209	3,875.00
25,000 lb	(11,339.8 kg)	18210	3,875.00
50,000 lb	(22,679.6 kg)	18211	7,595.00
75,000 lb	(34,019.5 kg)	25351	7,595.00
Dummy Load Cells			
1000-5000 lb	(453.6-2268.0 kg)	18236	20.00
10,000-25,000 lb	(4535.9-11,339.8 kg)	18237	35.00
50,000 lb	(22,679.6 kg)	18238	50.00
Equalizer Pads			
1000 lb-5000 lb			Consult
10,000 lb-25,000 lb			Consult

SHIMS, MILD STEEL

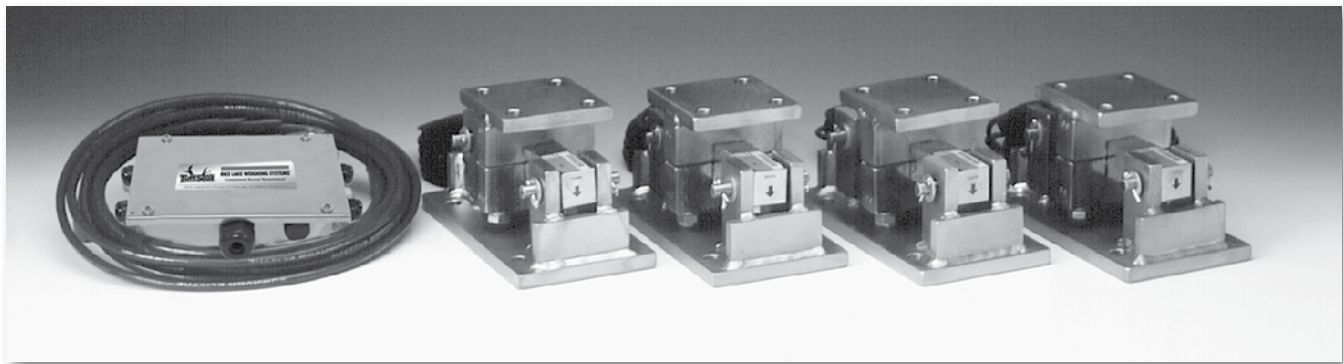
		PART #	PRICE
1K-5K			
0.0625		150844	\$1.00
0.125		150845	1.50
0.250		150846	1.75
10K-25K			
0.0625		150847	3.50
0.125		150848	6.00
0.250		150849	6.50
50K-75K			
0.0625		150850	4.50
0.125		150851	7.50
0.250		150866	6.00

LOAD CELL UPGRADE

RL75016WHE STAINLESS HERMETIC LOAD CELLS	
3 mount kits 1k-5k \$390.00, 10k-25k \$435.00 added to list price	
4 mount kits 1k-5k \$520.00, 10k-25k \$580.00 added to list price	

Applies to cast iron and mild steel kits.

RL1600 Series Stainless Steel

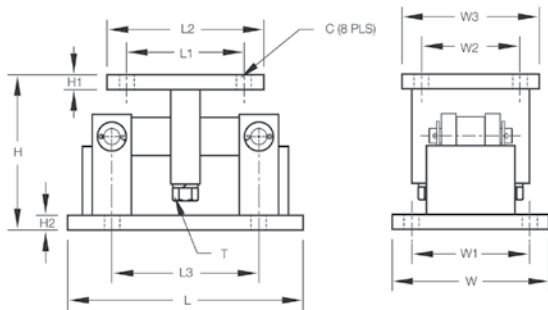
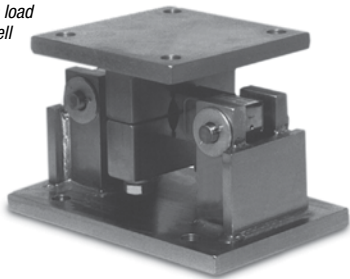


Available in configurations with three or four mounting assemblies.

Picture is a representation of actual product

The RL1600 Series Mounting Module Kit utilizes several Rice Lake Weighing Systems components to provide an unmatched level of performance in tank and hopper weighing applications. The RL1600 Series kit is ideally suited for indoor and outdoor process control operations in the medium-to high-capacity ranges. Each module incorporates self-checking capabilities for thermal expansion and contraction.

Fabricated stainless steel module with RL75016 SS double-ended beam load cell. Refer to page 558 for load cell specifications.



DIMENSIONS

RATED CAPACITY	C	H	H1	H2	L	L1	L2	L3	T	W	W1	W2	W3
lb/inches													
1000-5000	.56	5.00	.50	.50	9.25	2.75	4.00	6.25	1/2-13 UNC	5.00	3.75	2.75	4.00
10,000-25,000	.78	7.87	.75	.75	12.00	6.00	8.00	7.50	3/4-10 UNC	8.00	6.00	6.00	8.00
50,000-75,000	.78	9.31	1.00	1.00	16.25	6.50	9.00	11.50	1 1/4-7 UNC	12.00	9.50	6.50	9.00
kg/mm													
453.6-2268.0	14.2	127.0	12.7	12.7	235.0	69.9	101.6	158.8	1/2-13 UNC	127.0	95.3	69.9	101.6
4535.9-11,339.8	19.8	199.9	19.1	19.1	304.8	152.4	203.2	190.5	3/4-10 UNC	203.2	152.4	152.4	203.2
22,679.7-54,419.5	19.8	228.5	25.4	25.4	412.8	165.1	228.6	228.1	1 1/4-7 UNC	228.6	211.9	165.1	228.6

COMPLETE KIT INCLUDES

- 1 JB4SS NEMA 4X stainless steel signal trim junction box
- 3 or 4 RL1600 stainless steel compression mounts
- 3 or 4 RL75016 SS stainless steel double-ended shear beam load cells (see page 558)
- 25 ft of our Hostile Environment EL147HE SURVIVOR® load cell cable

APPLICATIONS

- Medium-to heavy-capacity tanks, bins, and hoppers
- Bulk material management

STANDARD FEATURES

- Capacities (per module): 1000-75,000lb (453.6-34,019.5kg)
- 304 stainless steel construction
- Self-checking, easy-to-use design allows module to be bolted directly to tank leg without requiring additional mounting plates or load buttons
- Environmentally protected load cells
- Double-ended shear beam design, center loaded

OPTIONAL FEATURES

- Kits available with Vishay Sensortronics 65016W SS load cells

LOAD CELL CERTIFICATIONS



Rice Lake load cells only

RL1600 Series 304 Stainless Steel

ORDER INFORMATION

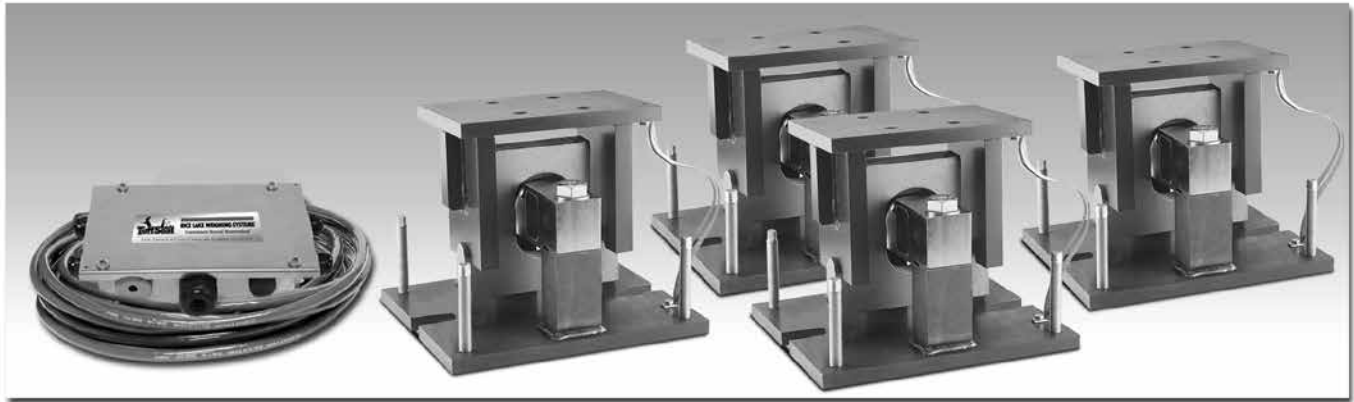
LOAD RATING (PER MODULE)		PART #	PRICE
Single Module (Does NOT Include Load Cell)			
1000-5000 lb	(453.6-2268.0 kg)	17813	\$565.00
10,000-25,000 lb	(4535.9-11,339.8 kg)	17815	1,095.00
50,000 lb	(22,679.6 kg)	17842	2,595.00
75,000 lb	(34,019.5 kg)	25347	2,595.00
3-Module Kit			
1000 lb	(453.6 kg)	18141	3,250.00
1500 lb	(680.4 kg)	18142	3,250.00
2000 lb	(907.2 kg)	18143	3,250.00
2500 lb	(1134.0 kg)	18144	3,250.00
5000 lb	(2268.0 kg)	18145	3,250.00
10,000 lb	(4535.9 kg)	18146	4,895.00
15,000 lb	(6803.9 kg)	18147	4,895.00
20,000 lb	(9071.9 kg)	18148	4,895.00
25,000 lb	(11,339.8 kg)	18149	4,895.00
50,000 lb	(22,679.6 kg)	18150	10,995.00
75,000 lb	(34,019.5 kg)	25352	10,995.00
4-Module Kit			
1000 lb	(453.6 kg)	18152	4,195.00
1500 lb	(680.4 kg)	18153	4,195.00
2000 lb	(907.2 kg)	18154	4,195.00
2500 lb	(1134.0 kg)	18155	4,195.00
5000 lb	(2268.0 kg)	18156	4,195.00
10,000 lb	(4535.9 kg)	18157	6,695.00
15,000 lb	(6803.9 kg)	18158	6,695.00
20,000 lb	(9071.9 kg)	18159	6,695.00
25,000 lb	(11,339.8 kg)	18160	6,695.00
50,000 lb	(22,679.6 kg)	18161	14,995.00
75,000 lb	(34,019.5 kg)	25353	14,995.00

ORDER INFORMATION: 65016W
VPG SENSORTRONICS

LOAD RATING (PER MODULE)		PART #	PRICE
3-Module Kit			
1000 lb	(453.6 kg)	18213	\$3,495.00
1500 lb	(680.4 kg)	18214	3,495.00
2500 lb	(1134.0 kg)	18216	3,495.00
5000 lb	(2268.0 kg)	18217	3,495.00
10,000 lb	(4535.9 kg)	18218	5,295.00
15,000 lb	(6803.9 kg)	18219	5,295.00
20,000 lb	(9071.9 kg)	18220	5,295.00
25,000 lb	(11,339.8 kg)	18221	5,295.00
50,000 lb	(22,679.6 kg)	18222	11,595.00
75,000 lb	(34,019.5 kg)	25354	11,595.00
4-Module Kit			
1000 lb	(453.6 kg)	18224	4,595.00
1500 lb	(680.4 kg)	18225	4,595.00
2500 lb	(1134.0 kg)	18227	4,595.00
5000 lb	(2268.0 kg)	18228	4,595.00
10,000 lb	(4535.9 kg)	18229	6,995.00
15,000 lb	(6803.9 kg)	18230	6,995.00
20,000 lb	(9071.9 kg)	18231	6,995.00
25,000 lb	(11,339.8 kg)	18232	6,995.00
50,000 lb	(22,679.6 kg)	18233	15,295.00
75,000 lb	(34,019.5 kg)	25355	15,295.00
Dummy Load Cells (Mild Steel)			
1000-5000 lb	(453.6-2268.0 kg)	18236	20.00
10,000-25,000 lb	(4535.9-11,339.8 kg)	18237	35.00
50,000 lb	(22,679.6 kg)	18238	50.00
Equalizer Pads			
1000 lb-5000 lb	—		Consult
10,000 lb-25,000 lb	—		Consult

SHIMS, STAINLESS

		PART #	PRICE
1K-5K			
0.0625		150852	\$3.25
0.125		150853	8.50
0.250		150854	14.25
10K-25K			
0.0625		150855	12.75
0.125		150856	20.50
0.250		150857	57.00
50K-75K			
0.0625		150858	16.25
0.125		150859	26.25
0.250		150861	72.25

MVS Mount/MVS Conversion Kit

Picture is a representation of actual product

Designed for the Rice Lake Weighing Systems SURVIVOR® Truck Scale product line, the MVS can also be purchased independently to support existing designs or applications. Built to withstand the punishment of the most severe environments, the MVS utilizes the center-loaded double-ended shear beam load cell design. The mount is self-centering, which eliminates the need of costly check rods. This results in a pendulum suspension effect that eliminates binding, protects the load cells from damaging side load common on truck scales and automatically returns the mount to dead center. The mount is easy to install and promises high performance and long life.

COMPLETE KIT INCLUDES

- 4 to 10 RL75058-75,000 lb load cells (see page 560) with 35 ft or 60 ft cables
- 4 to 10 MVS mounts
- JB 8SPT junction box (JB1010 on 10 module kit)
- 100 ft of our Hostile Environment EL147HE SURVIVOR® load cell cable

APPLICATIONS

- Truck/Track scale conversion
- Heavy-capacity horizontal tanks

STANDARD FEATURES

- Capacity Design: 10,000-125,000 lb (4536.0-34,019.4 kg)
- Mild steel construction
- Specially hardened center link
- Self-checking design
- Self-centering design
- Accommodates thermal expansion and contraction

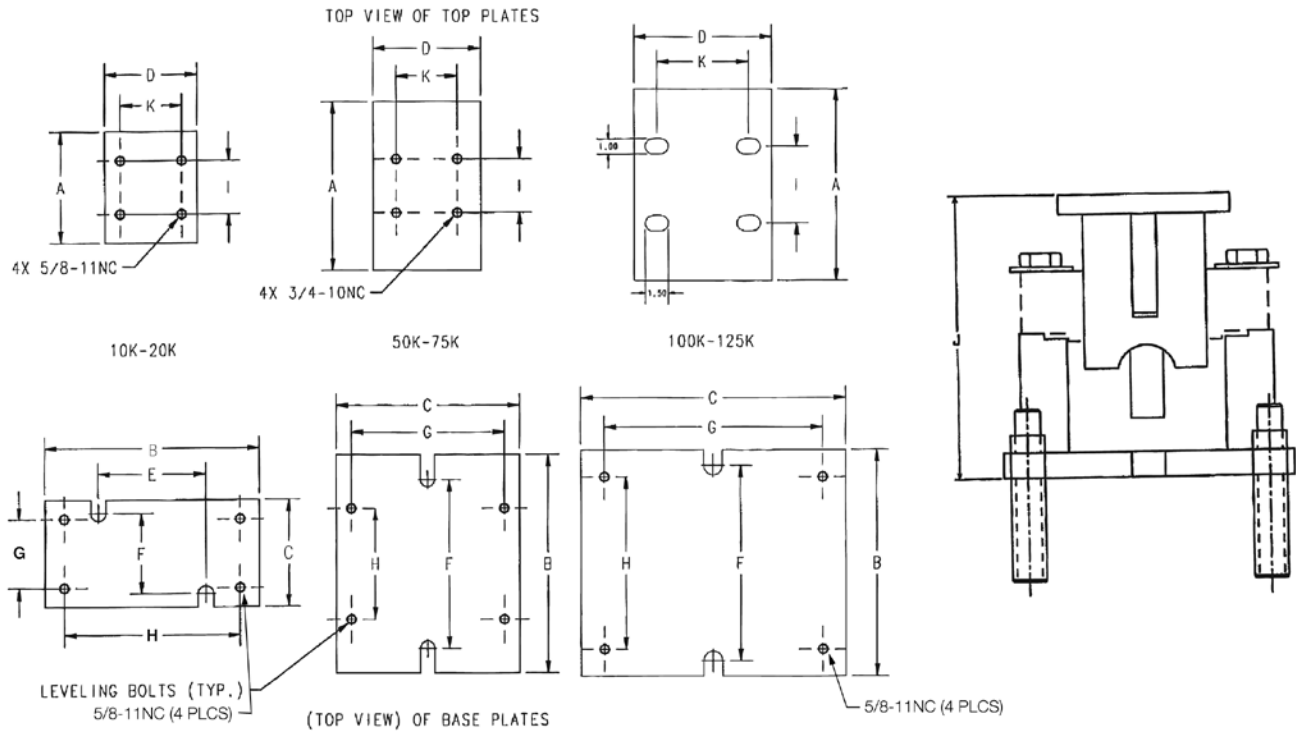
OPTIONAL FEATURES

- Vishay Sensortronics 65058 or Vishay Celtron CLB

NOTE: Check with your local weights & measure officials for suitability in Legal for Trade applications.

LOAD CELL CERTIFICATIONS

MVS Mount/MVS Conversion Kit



DIMENSIONS

RATED CAPACITY	A	B	C	D	E	F	G	H	I	J	K
lb/inches											
10,000-25,000	7.25	14.00	7.00	6.00	7.00	5.25	4.50	11.50	3.50	8.50	4.00
50,000-75,000	11.00	14.25	12.00	7.00	—	11.00	10.00	7.25	3.50	11.53	4.00
100,000-125,000	12.50	14.75	17.25	9.00	—	12.75	14.25	11.25	5.00	14.21	6.00
kg/mm											
4536-11,340	184.2	355.6	177.8	152.4	177.8	133.5	114.3	292.1	88.9	215.9	101.6
22,679.6-34,019.4	279.4	362.0	304.8	177.8	—	279.4	254	184.15	88.9	292.9	101.6
45,360-56,700	317.50	374.7	438.2	228.6	—	323.9	362.0	285.8	127.0	360.9	152.4

ORDER INFORMATION

LOAD RATING (PER MODULE)	PART #	PRICE
MVS Mount (Does NOT Include Load Cell)		
10,000 lb-25,000 lb (4536-11,340 kg)	71200	\$595.00
50,000 lb-75,000 lb (22,679.6-34,019.4 kg)	46441	695.00
100,000 lb-125,000 lb (45,360 kg-56,700.0 kg)	68520	1,200.00

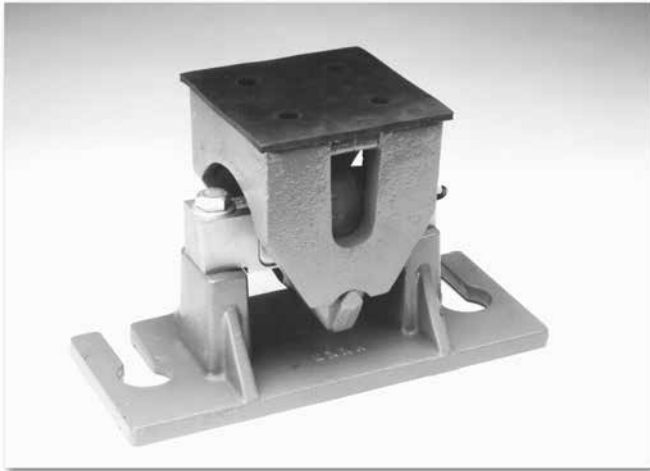
Custom heights available; Consult

* Consult for other capacity requirements

ORDER INFORMATION

LOAD RATING (PER MODULE)	PART #	PRICE
MVS Conversion Kits (Includes 75,000lb* Load Cells, Mounts & J-Box)		
4-module kit	68495	\$6,595.00
6-module kit	68496	9,695.00
8-module kit	68497	13,195.00
10-module kit	68498	16,995.00

TSA Truck Scale Assembly



Mount only; does not include load cell

Picture is a representation of actual product

The TSA truck scale assembly is designed for use with Rice Lake Weighing Systems RL75058 or Vishay Sensortronics 65058. The “Unilink” suspension design checks lateral movement of the assembly, while controlled floating of the scale deck is allowed. The effective integration of the TSA mount and the double-ended shear beam load cell eliminates the need for troublesome check rods, links, expansion assemblies and other peripheral hardware.

APPLICATIONS

- Truck, track, horizontal tank or general purpose
- Light-duty livestock to heavy-duty vehicle scales

STANDARD FEATURES

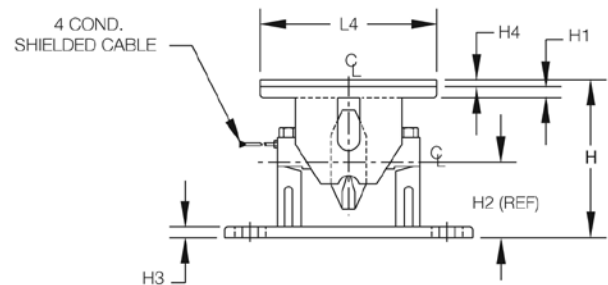
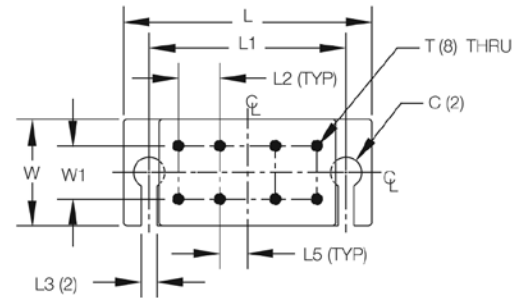
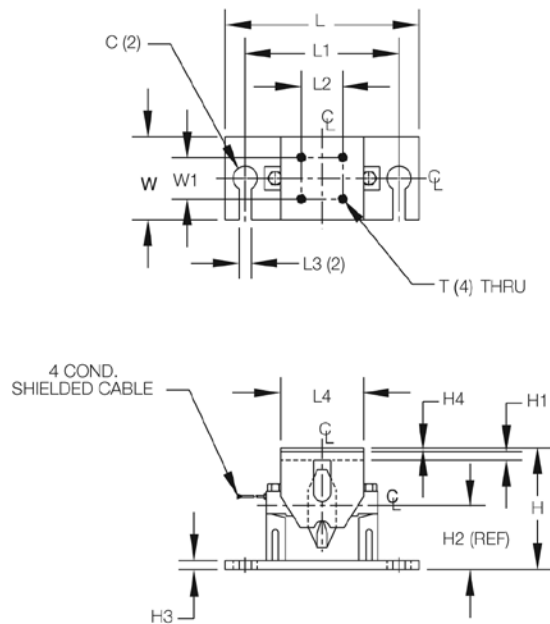
- Capacities: 10,000-75,000 lb (4535.9-34,019.4 kg)
- Constructed of cast steel and iron with primer coating
- Unique high-performance “Unilink” suspension system
- Center-loaded double-ended shear beam design
- Self-checking design
- Rubber pad provided for mounting

OPTIONAL FEATURES

- 20,000-75,000 lb (9071.9-34,019.4 kg) capacity NTEP Certified load cells available for 1:10,000d, Class III

NOTE: Check with your local weights & measure officials for suitability in Legal for Trade applications.

TSA Truck Scale Assembly



DIMENSIONS

RATED CAPACITY	C	H	H1	H2	H3	H4	L	L1	L2	L3	L4	L5	T	W	W1
lb/inches															
10,000-25,000	1.75 DIA.	8.75	.62	4.62	.62	.25	14.00	11.00	3.00	.88	6.00	—	5/8-11 UNC-2B	6.00	3.00
50,000-75,000	2.00 DIA.	11.00	.75	5.44	.75	.50	18.00	14.00	3.00	.88	12.75	2.00	3/4-10 UNC-2B	7.00	3.50
kg/mm															
4535.9-11,339.8	44.5 DIA.	222.3	15.7	117.3	15.7	6.4	355.6	279.4	76.2	22.4	152.4	—	5/8-11 UNC-2B	152.4	76.2
22,679.6-34,019.4	50.8 DIA.	279.4	19.1	138.2	19.1	12.7	457.2	355.6	76.2	22.4	323.9	50.8	3/4-10 UNC-2B	177.8	88.9

ORDER INFORMATION

LOAD RATING (PER MODULE)	PART #	PRICE
10,000-20,000-25,000 lb (4535.9-9071.9-11,339.8 kg)	17821	\$995.00
50,000-60,000-75,000 lb (22,679.6-27,215.5-34,019.4 kg)	17822	1,195.00

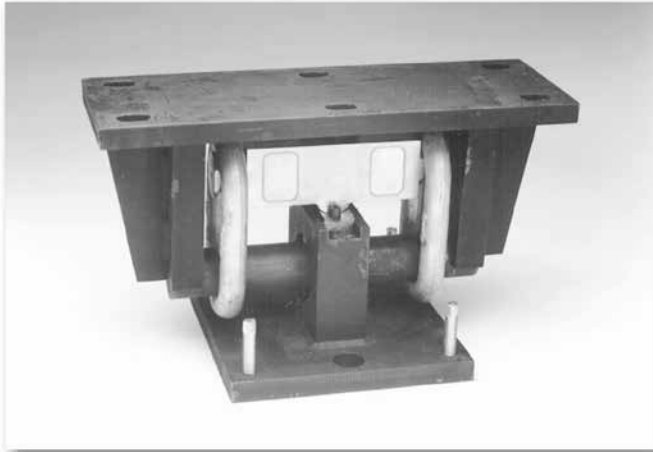
*Mount only; does not include load cell

See Vishay Sensortronics load cell model 65058 specifications

See page 560 for Rice Lake Weighing Systems load cell model RL75058 specifications

See page 561 for welded-seal RL75060S cell

Translink™ Parallel Link Truck Scale Assembly Rice Lake Weighing Systems



Mount only; does not include load cell

Picture is a representation of actual product

The TRANSLINK parallel link truck scale assembly is designed for use with Rice Lake Weighing Systems' RL75223 and RL75040A, Revere Transducers 5223 or Vishay Sensortronics' 65040A load cells. This design allows the scale platform to move freely in all directions in a horizontal plane while causing the platform to self-center because of the pendulous action of the links. The unique parallel link design eliminates the need for costly and troublesome checkrods. Simply install platform bumpers and forget about over-travel. This mount is ideal for heavy-capacity weigh bridges.

APPLICATIONS

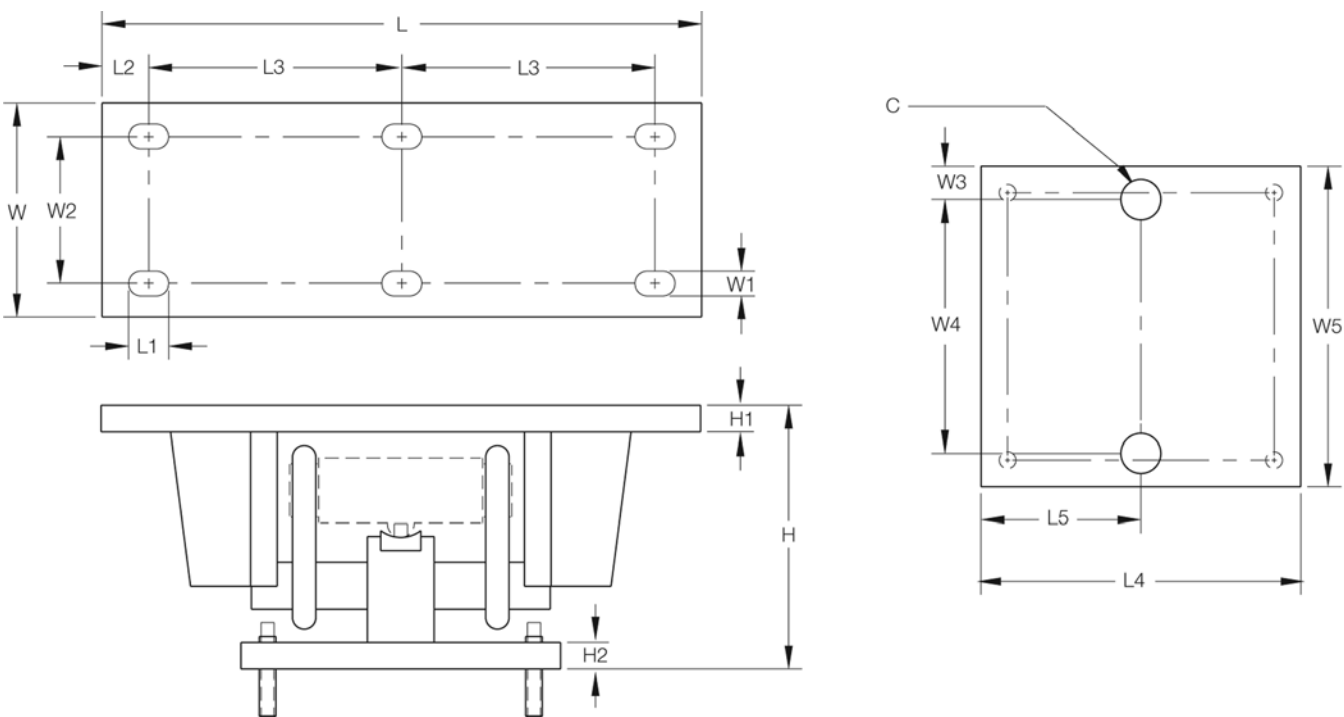
- Truck scale mount
- Heavy-capacity horizontal tanks

STANDARD FEATURES

- Capacities: 25,000-100,000 lb (11,339.8-45,359.4 kg)
- Center-supported, end-loaded double-ended shear beam design
- Free movement in all directions in the horizontal plane with virtually no friction
- Links provide optimal loading conditions for the cell
- Completely self-centering
- Requires no check rods
- Utilizes cells with 3 mV/V output
- Models available are RL75223 and RL75040, RTI 5223 and Vishay Sensortronics 65040A load cells

NOTE: Check with your local weights & measure officials for suitability in Legal for Trade applications.

Translink™ Parallel Link Truck Scale Assembly Rice Lake Weighing Systems



DIMENSIONS

RATED CAPACITY	C	H	H1	H2	L	L1	L2	L3	L4	L5	W	W1	W2	W3	W4	W5
lb/inches																
50,000-100,000 (RL75223, 5223)	1.50	12.93	1.00	1.00	22.50	1.50	1.75	9.50	11.75	5.88	7.75	.91	5.25	1.25	9.25	11.75
25,000-40,000 (RL75040A, 65040A)	1.50	9.88	1.00	1.00	18.50	1.50	1.75	7.50	11.75	5.88	7.75	.91	5.25	1.25	9.25	11.75
50,000-75,000 (RL75040A, 65040A)	1.50	12.82	1.00	1.00	22.50	1.50	1.75	9.50	11.75	5.88	7.75	.91	5.25	1.25	9.25	11.75
kg/mm																
22,679.6-45,359.4	38.1	328.4	25.4	25.4	571.5	37.5	44.5	241.3	298.5	149.4	196.9	23.1	133.4	31.8	235.0	298.4
11,339.8-18,143.7	38.1	251.0	25.4	25.4	469.9	37.5	44.5	190.5	298.5	149.4	196.9	23.1	133.4	31.8	235.0	298.4
22,679.6-34,019.4	38.1	325.6	25.4	25.4	571.5	37.5	44.5	241.3	298.5	149.4	196.9	23.1	133.4	31.8	235.0	298.4

ORDER INFORMATION

LOAD RATING (PER MODULE)		PART #	PRICE
For Use With RL75223, 5223 Load Cells			
50,000-100,000 lb	(22,679.6-45,359.4 kg)	17970	\$725.00
For Use With RL75040A, 65040A Load Cells			
25,000-40,000 lb	(11,339.8-18,143.7 kg)	17971	725.00
50,000-75,000 lb	(22,679.6-34,019.4 kg)	17972	725.00

*Mount only; does not include load cell

See page 562 for load cell model RL75223 (RLWS), page 564 for load cell model RL75040 (RLWS), and model 65040A (Vishay Sensortronics) specifications

Motor Truck Scale Electronic Conversion Kit Rice Lake Weighing Systems



Picture is a representation of actual product

Full electronic performance can be achieved at a fraction of the cost of a new scale and pit. The Motor Truck Scale (MTS) Electronic Conversion Kit is designed to transform an existing scale pit and weighbridge into a fully electronic vehicle scale. Designed for quick installation without removing the platform or reconfiguring the pit, the conversion kit can often be installed in a matter of days, minimizing downtime. This ease of installation is important when considering installations where it is not feasible to completely remove the existing scale.

COMPLETE KIT INCLUDES

- 1 JB8SP NEMA 4X signal-trim junction box with individual and section trimming capability (6 and 8-mount kits) or 1 JB4SP NEMA 4X signal-trim junction box (4-mount kits)
- 1 UJB3T6 DC transient protector
- 4, 6 or 8 Translink mounting assemblies with RL75040 or RL75223 load cells (see pages 564 and 562)
- 100' of Hostile Environment EL147HE SURVIVOR® load cell cable

APPLICATIONS

- Updating existing mechanical motor truck scales
- Replacing unsatisfactory electronic motor truck scales
- Conversion of heavy-capacity scales into fully electronic vehicle scales where the existing scale cannot be removed

STANDARD FEATURES

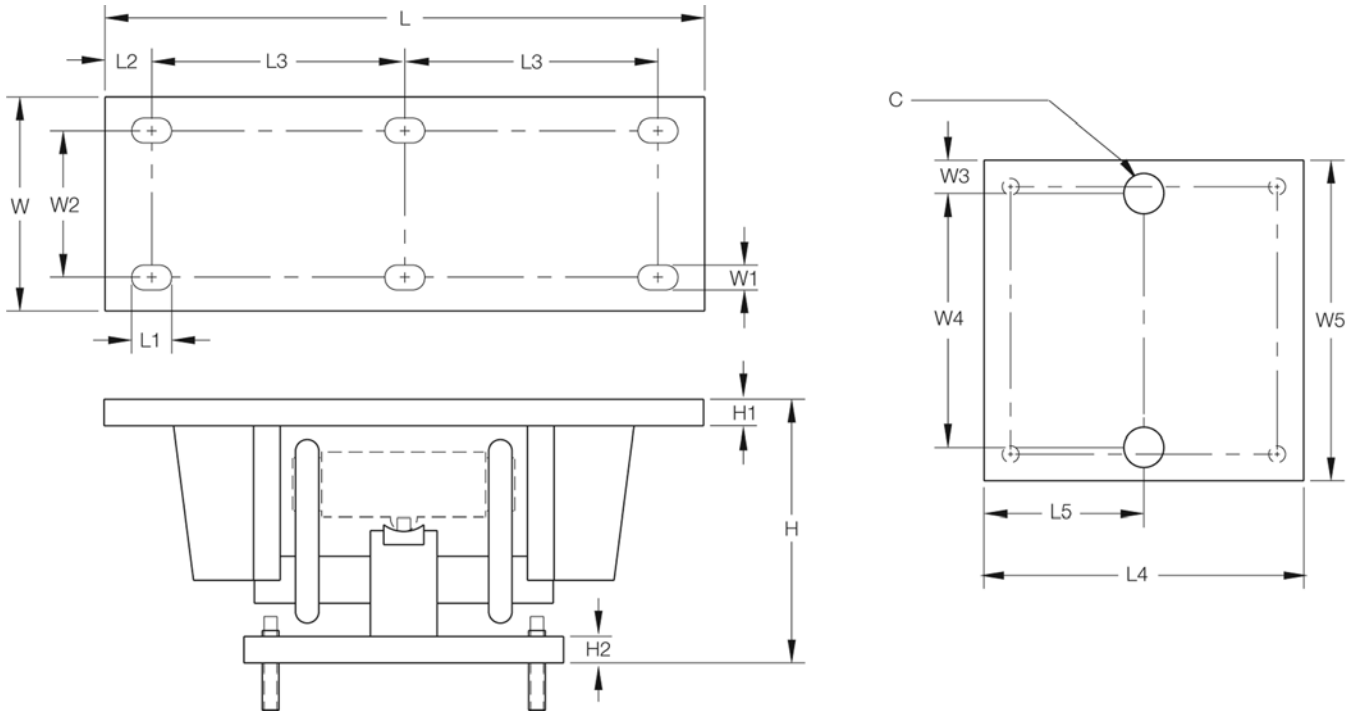
- Cost-and time-efficient installation; no need to remove weighbridge
- Converts existing scale capacities of 40,000-300,000 lb (18,143.7-90,718.7 kg)
- 4, 6 or 8-mount kits for 2, 3 or 4-section conversions
- Translink™ heavy-capacity mounting assemblies
- Free movement in all directions in the horizontal plane with virtually no friction
- Completely self-centering
- Requires no check rods
- Capacity per mount: 25,000-100,000 lb (11,339.8-45,359.4 kg)
- Utilizes cells with 3 mV/V output

OPTIONAL FEATURES

- Custom heights available; Consult
- RLWS RL75223 welded-seal, Vishay Sensortronics 65040A or RTI 5223 load cells

NOTE: Check with your local weights & measure officials for suitability in Legal for Trade applications.

MTS Conversion Kit Specifications



DIMENSIONS

RATED CAPACITY	C	H*	H1	H2	L	L1	L2	L3	L4	L5	W	W1	W2	W3	W4**	W5
lb/inches																
50,000-100,000 (RL75223)	1.50	12.93	1.00	1.00	22.50	1.50	1.75	9.50	11.75	5.88	7.75	.91	5.25	1.25	9.25	11.75
25,000-40,000 (RL75040A)	1.50	9.88	1.00	1.00	18.50	1.50	1.75	7.50	11.75	5.88	7.75	.91	5.25	1.25	9.25	11.75
50,000-75,000 (RL75040A)	1.50	12.82	1.00	1.00	22.50	1.50	1.75	9.50	11.75	5.88	7.75	.91	5.25	1.25	9.25	11.75
kg/mm																
22,679.6-45,400.00 (RL75223)	38.1	328.4	25.4	25.4	571.5	37.5	44.5	241.3	298.5	149.4	196.9	23.1	133.4	31.8	235.0	298.45
11,339.8-18,143.7 (RL75040A)	38.1	251.0	25.4	25.4	469.9	37.5	44.5	190.5	298.5	149.4	196.9	23.1	133.4	31.8	235.0	298.45
22,679.6-34,019.4 (RL75040A)	38.1	325.6	25.4	25.4	571.5	37.5	44.5	241.3	298.5	149.4	196.9	23.1	133.4	31.8	235.0	298.45

*Custom heights available; Consult

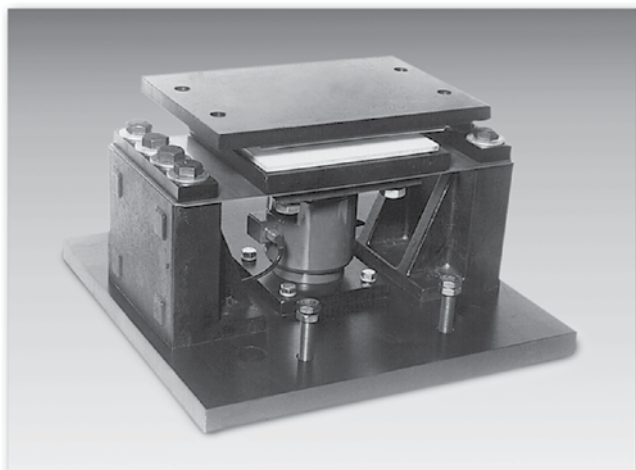
**Custom hole spacing for existing bolt patterns is available; Consult

ORDER INFORMATION

SCALE SUGGESTED CAPACITY		LOAD CELL CAPACITY (PER MODULE)		PART #	PRICE	LOAD CELL USED IN KIT
4-Module Kit (Includes Weigh Modules Load Cells, J-Box, and Transient Protection)						
40,000 lb	(18,143.7 kg)	25,000 lb	(11,339.8 kg)	30513	\$5,525.00	RL75040A
60,000 lb	(27,215.6 kg)	40,000 lb	(18,143.7 kg)	30514	6,025.00	RL75040A
6-Module Kit (Includes Weigh Modules Load Cells, J-Box, and Transient Protection)						
100,000 lb	(45,359.4 kg)	50,000 lb	(22,679.6 kg)	30515	9,495.00	RL75040A
120,000 lb	(54,431.2 kg)	60,000 lb	(27,215.6 kg)	30516	9,495.00	RL75040A
8-Module Kit (Includes Weigh Modules Load Cells, J-Box, and Transient Protection)						
120,000 lb	(54,431.2 kg)	60,000 lb	(27,215.6 kg)	30517	12,225.00	RL75040A
200,000 lb	(90,718.7 kg)	75,000 lb	(34,019.4 kg)	30518	12,225.00	RL75040A
300,000 lb	SD (136,078.1 kg).	100,000 lb	(45,359.4 kg)	30512	14,950.00	RL75223

SD refers to super duty, 100,000 lb (45,359.4 kg) capacity welded-seal load cells

MagnaMount® Tank, Truck & Railroad Track Assembly



Mount only; does not include load cell

Picture is a representation of actual product

The MagnaMount Tank, Truck and Railroad scale assembly is designed for use with Rice Lake Weighing Systems RLCSP1 or Revere Transducers CP or CSP load cells. The “Shielded Cell” load cell mounting assembly is a highly reliable design that shields the load cell from shock and side load effects, assuring accurate weighing even under adverse loading conditions.

APPLICATIONS

- Truck scale mount*
- Heavy-capacity horizontal tanks*
- Railroad track mount*

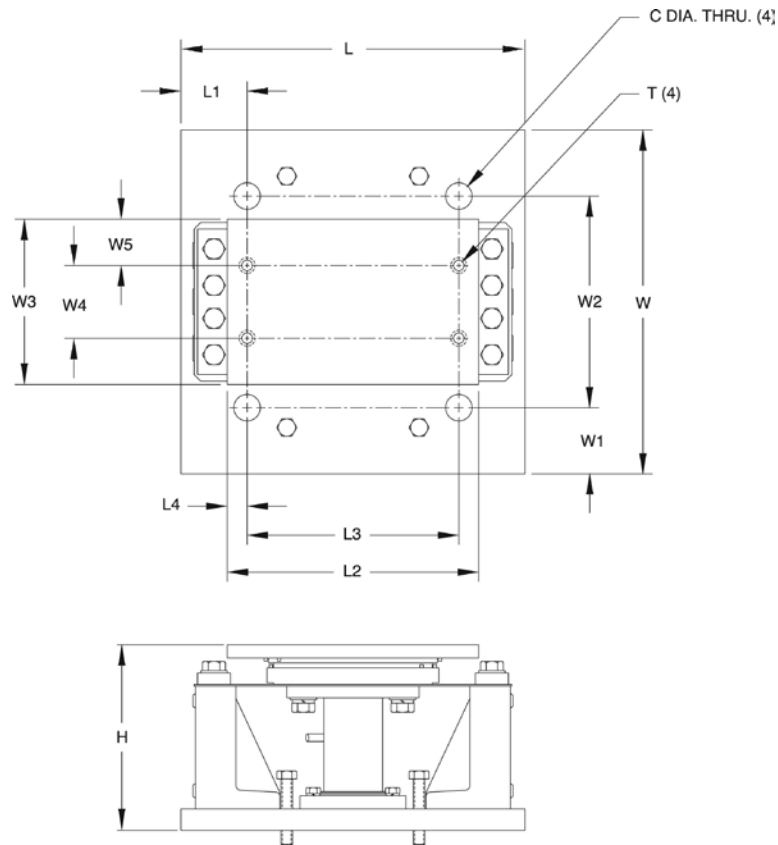
STANDARD FEATURES

- Capacities: 50,000, 100,000 and 200,000 lb (22,679.6, 45,359.4 and 90,718.7 kg)
- Protects load cell from shock and side loads
- Low-profile design
- High-strength load bearing plate made of high-grade carbon steel hardened to Rockwell C 48-54
- PTFE-coated shock absorbing pads
- Compatible with Revere Transducers CP and CSP and Rice Lake Weighing Systems' RLCSP1 NTEP Certified load cells

**Check rods required*

NOTE: Check with your local weights & measure officials for suitability in Legal for Trade applications.

MagnaMount® Tank, Truck & Railroad Track Assembly



DIMENSIONS

RATED CAPACITY	C	H	L	L1	L2	L3	L4	T	W	W1	W2	W3	W4	W5
lb/inches														
50,000	1.25	7.39	13.00	1.75	11.25	8.50	1.37	3/4-10 UNC	12.00	1.75	8.50	8.00	4.50	1.75
100,000	1.50	11.29	20.00	2.50	18.00	15.50	1.25	7/8-9 UNC	17.00	2.50	12.00	9.00	5.50	1.75
200,000	2.00	14.10	26.00	5.00	19.00	16.00	1.50	1-8 UNC	26.00	5.00	16.00	12.50	5.50	3.50
kg/mm														
22,679.6	31.8	187.7	330.2	44.5	285.8	241.3	34.8	3/4-10 UNC	304.8	44.5	215.9	203.2	114.3	44.5
45,359.4	38.1	286.8	508.0	63.5	457.2	393.7	31.8	7/8-9 UNC	431.8	63.5	304.8	228.6	139.7	44.5
90,718.7	50.8	358.1	660.4	127.0	482.6	406.4	38.1	1-8 UNC	660.4	127.0	406.4	317.5	139.7	88.9

ORDER INFORMATION

LOAD RATING (PER MODULE)	PART #	PRICE
50,000 lb (22,679.6 kg)	21723	\$1,195.00
100,000 lb (45,359.4 kg)	21724	1,495.00
200,000 lb (90,718.7 kg)	17974	2,295.00

*Mount only; does not include load cell

See page 285 for Revere Transducers load cell model CP, and page 286 for NTEP Certified load cell model CSP specifications

See page 156 for Rice Lake Weighing Systems' NTEP Certified load cell model RLCSP1

Mettler Toledo™ DigiTOL® Retrofit Kit Stainless Steel, Rice Lake Weighing Systems/Flintec

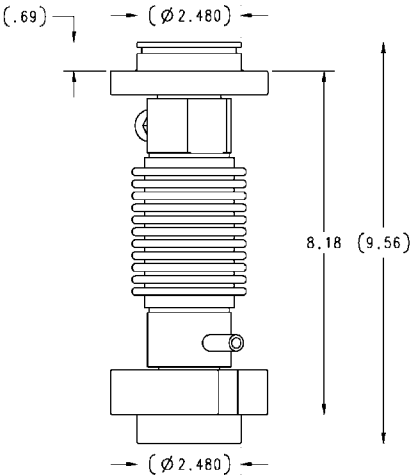
WEIGH MODULES



Shown here with the JB8SP signal trim junction box

Picture is a representation of actual product
These kits are designed to provide a cost effective solution for replacing Toledo™ DigiTOL® digital load cells with analog load cells. The Flintec RC1 and RC3 load cells are stainless steel and hermetically sealed to provide years of trouble-free service.

LOAD CELL CERTIFICATIONS



RC1

COMPLETE KIT INCLUDES

- 1 JB8SP or 2 JB8SP signal trim junction boxes (8 and 10 mount kit)
- 3 EL304 signal trim boxes in/12 mount kits
- 8, 10 or 12 Flintec RC1-250 KN load cells with upper and lower load cups
- 100 ft of Hostile Environment EL147HE SURVIVOR® load cell cable

APPLICATIONS

- Toledo DigiTOL truck scale conversion

STANDARD FEATURES

- Stainless steel hermetically sealed load cells
- Converts existing Mettler Toledo DigiTOL scale to an analog based load cell weighing system
- 8, 10 or 12 load cells, cups plus J-box and homerun cable
- Load cells are NTEP Certified 1:10,000 divisions, Class III.*
- Rocker design load cells

DIGITOL RETROFIT ORDER INFORMATION

DESCRIPTION	PART #	PRICE
8 mount kit. (RC1-56K)	78713	\$8,795.00
10 mount kit. (RC1-56K)	78714	10,695.00
12 mount kit (RC1-56K)	152774	13,195.00

*Consult your local Weights & Measures Authorities for local Legal for Trade requirements

Mettler Toledo™ DigiTOL® Retrofit Kit

Stainless Steel, Rice Lake Weighing Systems/Flintec

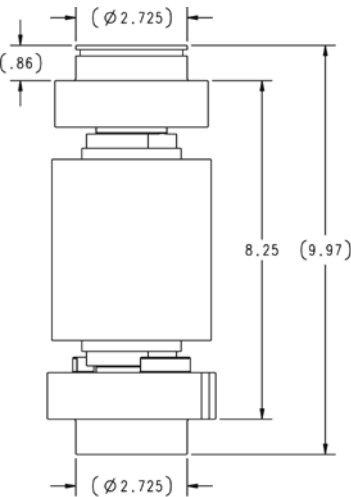


Shown here with the JB8SP signal trim junction box

Picture is a representation of actual product

This kit is designed to provide a cost effective solution for replacing Toledo™ DigiTOL® digital load cells with analog load cells. The Flintec RC3 load cell is stainless steel and hermetically sealed to provide years of trouble-free service.

LOAD CELL CERTIFICATIONS



RC3

COMPLETE KIT INCLUDES

- 1 JB8SP or 2 JB8SP signal trim junction boxes (8 and 10 mount kit)
- 3 EL304 signal trim boxes in/12 mount kits
- 8, 10 or 12 Flintec RC3
- 100ft of Hostile Environment EL147HE SURVIVOR® load cell cable

APPLICATIONS

- Toledo DigiTOL truck scale conversion

STANDARD FEATURES

- Stainless steel hermetically sealed load cells
- Converts existing Mettler Toledo DigiTOL scale to an analog based load cell weighing system
- 8 or 10 load cells, cups plus J-box and homerun cable
- Load cells are NTEP Certified 1:10,000 divisions, Class III L*
- Rocker design load cells

DIGITOL RETROFIT ORDER INFORMATION

DESCRIPTION	PART #	PRICE
8 mount kit (RC3-50t) RR/track	129844	\$11,995.00
8 mount (RC3-50t) truck	154347	11,995.00
10 mount kit (RC3-50t) RR/track	111367	14,795.00
10 mount kit (RC3-50t) truck	154348	14,795.00
12 mount kit (RC3-50t) truck	154349	17,185.00

*Consult your local Weights & Measures Authorities for local Legal for Trade requirements

WEIGH MODULES

Electronic Floor Scale Underdeck Kits



ALLOY STEEL LOAD CELLS

INDUSTRIAL APPLICATIONS

Kit Includes

- (4) Vishay Celtron SQB load cells
- (1) JB4SS stainless steel NEMA 4X junction box
- (4) Surefoot high-accuracy stainless steel support feet
- 20ft/6.1 m EL147HE load cell cable
- (4) Mounting plates and (8) Load cell bolts

ORDER INFORMATION

LOAD CELL/BASE CAPACITY		PART #	PRICE
Kit Includes Vishay Celtron SQB Load Cells			
1000 lb for 2000 lb base	(453.6 kg for 907.2 kg base)	26436	\$895.00
2500 lb for 5000 lb base	(1134.0 kg for 2268.0 kg base)	26437	895.00
4000 lb for 10,000 lb base	(1814.4 kg for 4535.9 kg base)	26438	895.00

ALLOY STEEL
NTEP CERTIFIED LOAD CELLS

HIGH-PRECISION APPLICATIONS

Kit Includes

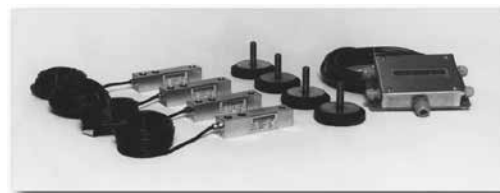
- (4) RL35023 alloy steel NTEP 5000 Divisions, Class III certified load cells
- (1) JB4SS stainless steel NEMA 4X junction box
- (4) Surefoot high-accuracy stainless steel support feet
- 20ft/6.1 m EL147HE load cell cable
- (4) Mounting plates and (8) Load cell bolts

NOTES: For complete load cell specifications, see RL35023 on page 535

The use of NTEP Certified load cells in a scale base does not constitute approval of the completed base. Consult with local or state jurisdiction for compliance requirements.

ORDER INFORMATION

LOAD CELL/BASE CAPACITY (PER MODULE)		PART #	PRICE
Kit Includes RL35023 Alloy Steel NTEP Certified Load Cells			
1000 lb for 2000 lb base	(453.6 kg for 907.2 kg base)	19032	\$975.00
2500 lb for 5000 lb base	(1134.0 kg for 2268.0 kg base)	19033	975.00
4000 lb for 10,000 lb base	(1814.4 kg for 4535.9 kg base)	19034	975.00



STAINLESS STEEL LOAD CELLS

CHEMICAL, DRY CORROSIVE & NON-WASHDOWN APPLICATIONS

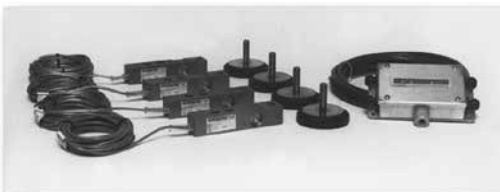
Kit Includes

- (4) Vishay Celtron SQB-HSS stainless steel load cells
- (1) JB4SS stainless steel NEMA 4X junction box
- (4) Surefoot high-accuracy stainless steel support feet
- 20ft/6.1 m EL147HE load cell cable
- (4) Mounting plates and (8) Load cell bolts

NOTE: For complete load cell specifications, see SQB-HSS

ORDER INFORMATION

LOAD CELL/BASE CAPACITY		PART #	PRICE
Kit Includes Vishay Celtron SQB-HSS Stainless Steel Load Cells			
1000 lb for 2000 lb base	(453.6 kg for 907.2 kg base)	19035	\$1,275.00
2500 lb for 5000 lb base	(1134.0 kg for 2268.0 kg base)	19036	1,275.00
4000 lb for 10,000 lb base	(1814.4 kg for 4535.9 kg base)	19037	1,275.00

WELDED SEAL
STAINLESS STEEL LOAD CELLS

WET CORROSIVE APPLICATIONS

Kit Includes

- (4) RL35083 welded-seal stainless steel load cells
- (1) JB4SS stainless steel NEMA 4X junction box
- (4) Surefoot high-accuracy stainless steel support feet
- 20ft/6.1 m EL147HE load cell cable
- (4) Mounting plates and (8) Load cell bolts

NOTE: For complete load cell specifications, see RL35083 on page 537

ORDER INFORMATION

LOAD CELL/BASE CAPACITY (PER MODULE)		PART #	PRICE
Kit Includes RL35083 Welded-Seal Load Cells			
1000 lb for 2000 lb base	(453.6 kg for 907.2 kg base)	19038	\$1,595.00
2500 lb for 5000 lb base	(1134.0 kg for 2268.0 kg base)	19039	1,595.00
4000 lb for 10,000 lb base	(1814.4 kg for 4535.9 kg base)	19040	1,595.00

Scale "Underdeck" Kits are provided to meet the application needs of the electronic floor scale producer and are an easy source for rebuilding existing floor scales. Underdeck kits are provided with mounting plates and load cell bolts for easy installation.