



Valor[®] 7000

Compact Bench Scales



The Best Compact Food Scale in its Class!

The OHAUS Valor 7000 compact food scale is the newest scale in the OHAUS line of reliable and durable products that will increase your food weighing and processing productivity. Dual displays and touchless sensors, user-friendly menu and setup, along with the speed and accuracy of the results provide for a seamless and hassle-free user experience that is second to none.

Standard Features Include:

- **Front and Rear Touchless Sensors Minimize Food Contamination** — Touchless sensors allow Valor 7000 to operate certain functions without the touch of a button, reducing the risk of food cross-contamination and extending the life of the scale!
- **Dual Backlit Displays Allow For Quick and Easy Weighing** — Large front and rear displays with brilliant backlights and checkweighing LED's are among Valor 7000's user-friendly features allow two operators to work on one scale at the same time or for retail use.
- **Rapid Stabilization Provides Unmatched Throughput** — Reap the benefits of a one second stabilization time and precise results, greatly increasing throughput.

Valor® 7000 *Compact Bench Scale*

Front and Rear Touchless Sensors Minimize Food Contamination

Touchless sensors located in the front and rear allow you to do all of your weighing without ever touching the scale! Determine weight and perform zero, tare or print operations with one swift hand motion. This will help reduce the chances of food cross-contamination and ultimately provide years of reliable service.

Dual Backlit Displays Allow for Quick and Easy Weighing in Retail Use

Valor 7000's many functional features make it one of the most user-friendly products on the market. Large displays on front and back of the Valor 7000 allow it to be used in countertop retail applications where the consumer needs to see the weight on the platform. This feature also allows two operators to share one scale and are easy to read even from a distance. The 1.5" front display and 1" rear display are both equipped with an LCD backlight for added clarity. The bright checkweighing LED's clearly show when the weight on the platform is under, over or within the target range.

Rapid Stabilization Provides Unmatched Throughput

See your results in a blink of an eye! Valor 7000 produces precise results in just one second. Maximize your time and increase your throughput by quickly displaying results. Eliminate diminished productivity and the concern of unstable results with Valor 7000.

Stainless Steel Platform, Sturdy Housing and Non-Slip Grip

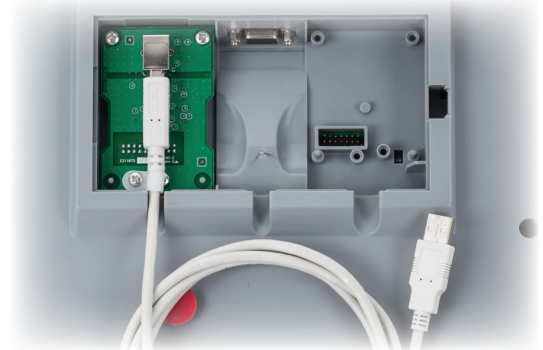
Valor 7000 features a removable stainless steel weighing platform and sturdy ABS housing that can stand up to daily use under the most demanding conditions. The large, non-slip leveling feet grip the counter's surface and prevent the scale from sliding during use.

Standard Connectivity with Flexible Options

Standard RS232 with optional Ethernet, second RS232 or USB offers additional data transfer capabilities and allows connection to multiple peripherals

Certifications

The Valor 7000's food-safe design is NSF Certified, USDA-AMS Accepted and supports HACCP-Certified systems. The Valor 7000 Series of scales meets or exceeds the Class III accuracy requirements in accordance with NIST Handbook 44 and Canada's Weights and Measures Regulation.



Portability and Versatile Power Options

With its convenient integrated carrying handle and rechargeable lead acid battery that can provide power for more than 210 hours between recharges, the Valor 7000 can provide many hours of uninterrupted operation wherever you need it in your business. The Valor 7000 includes an internal power transformer, so there are no outlet-hogging powerpacks, just a dedicated line cord.

Application Modes

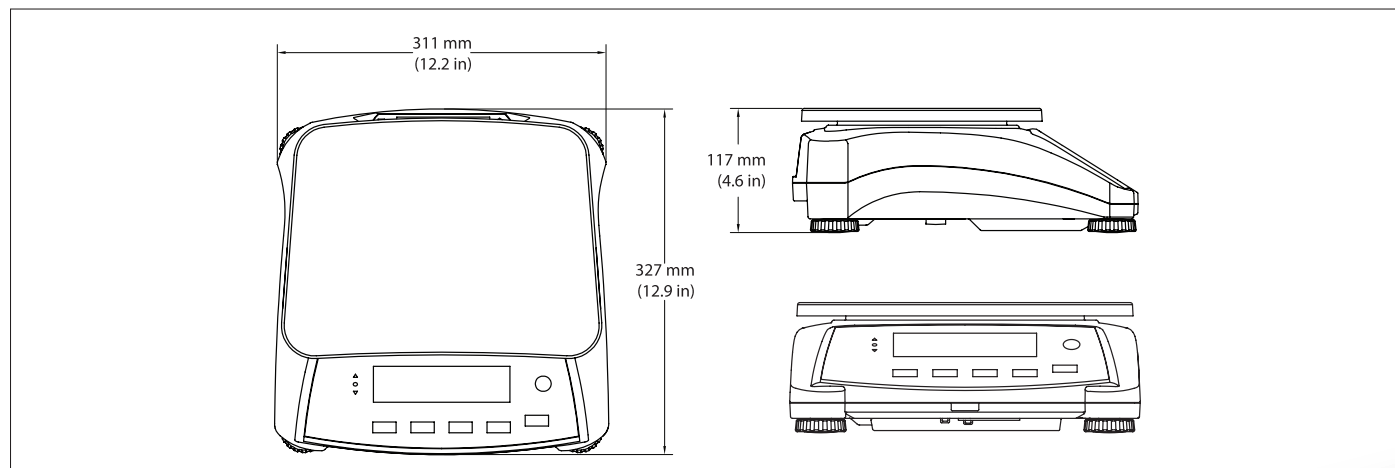
- **Weighing** — Determine the weight of items in one or more weighing units -- lb, oz, lb:oz, kg or g – use the 0.05g to 1g readability for weighing additives, spices and yeast.
- **Percentage Weighing** — The Valor 7000 includes % weighing for recipe formulation and baker's percentages. Just weigh the flour on the Valor's platform, capture the reference weight and all other ingredients can be weighed as a % of the flour weight, making small batches of dough quick and easy to work up!
- **Check Weighing or % Check** — Use the bright red/yellow/green LED's to easily fill containers and packages by weight or by % — great for sorting, grading and portioning.
- **Accumulation** — Keep a running total of all items by weight or percent of reference for recording long production run results.



Statistics Printer Ready!

Combine the Valor® 7000 with the new OHAUS SF40A statistics printer and keep track of information critical for SQC processes

Outline Dimensions



Valor® 7000 Compact Bench Scale

Model	V71P1502T	V71P3T	V71P6T	V71P15T	V71P30T
Default Capacity × Readability	1.5 kg × 0.00005 kg 3 lb × 0.0001 lb 1,500 g × 0.05 g 48 oz × 0.002 oz	3 kg × 0.0001 kg 6 lb × 0.0002 lb 3,000 g × 0.1 g 96 oz × 0.005 oz	6 kg × 0.0002 kg 15 lb × 0.0005 lb 6,000 g × 0.2 g 240 oz × 0.01 oz	15 kg × 0.0005 kg 30 lb × 0.001 lb 15,000 g × 0.5 g 480 oz × 0.02 oz	30 kg × 0.001 kg 60 lb × 0.002 lb 30,000 g × 1 g 960 oz × 0.05 oz
Certified Capacity × Readability	1.5 kg × 0.0005 kg 3 lb × 0.001 lb 1,500 g × 0.5 g 48 oz × 0.02 oz	3 kg × 0.001 kg 6 lb × 0.002 lb 3,000 g × 1 g 96 oz × 0.05 oz	6 kg × 0.002 kg 15 lb × 0.005 lb 6,000 g × 2 g 240 oz × 0.1 oz	15 kg × 0.005 kg 30 lb × 0.01 lb 15,000 g × 5 g 480 oz × 0.2 oz	30 kg × 0.01 kg 60 lb × 0.02 lb 30,000 g × 10 g 960 oz × 0.5 oz
Maximum Displayed Resolution	1:30,000	1:30,000	1:30,000	1:30,000	1:30,000
Certified/Approved Resolution	1:3,000	1:3,000	1:3,000	1:3,000	1:3,000
Construction	Stainless steel platform, ABS plastic housing				
Weighing Units	kg, g, lb, oz, lb:oz kg, g, lb, oz (certified)				
Application Modes	Weighing, Checkweighing, Checkpercent, Percent Weighing, Accumulation				
Display	Front: 1.5 in / 40 mm high LCD display with white backlight, 6-digit, 7-segment Rear: 1 in / 26 mm high LCD display with white backlight, 6-digit, 7-segment				
Checkweighing Indicators	3 LED (yellow, green, red) with configurable operation and alert beeper				
Operation	5 mechanical keys plus two touchless sensors				
Zero Range	2% or 10% of full scale capacity				
Tare Range	Full capacity by subtraction				
Stabilization Time	1 second				
Auto-Zero Tracking	Off, 0.5, 1 or 3 divisions				
Safe Overload Capacity	150% of capacity				
Power	100-240 VAC / 50-60 Hz internal universal power supply, internal rechargeable lead acid battery				
Battery Operation	210 hours continuous use between recharges with 12 hour recharge time				
Calibration	External, with user-selectable calibration weight value				
Interface	Built-in RS232, optional 2 nd RS232, USB, Ethernet				
Operating Temperature Range	14°F to 104°F / -10° C to 40° C				
Ingress Protection	IP43				
Platform Size (W × L)	11.8 × 8.9 in. / 300 × 225 mm				
Scale Dimensions (W × L × H)	12.2 × 12.9 × 4.6 in. / 311 × 327 × 117 mm				
Shipping Dimensions (W × L × H)	15.6 × 17.6 × 7.7 in. / 397 × 447 × 195 mm				
Net Weight	9.2 lb / 4.2 kg				
Shipping Weight	12 lb / 5.45 kg				

Other Standard Features and Equipment

Transportation handle, sealed front panel, menu lockswitch, up front level indicator, adjustable leveling feet, selectable environmental and auto-print settings, stability indicator, overload and underload indicators, low battery indicator, selectable auto shut-off, auto tare

Approvals

- **Metrology:** NIST Handbook 44 (NTEP CC 13-022) and Measurement Canada Weights and Measures Regulations (AM-5907C), OIML R76-1 (R76/2006-NL1-12-46), (Class III, nmax 3000)
- **Product Safety:** CSA-C22.2 61010-1, UL 61010-1
- **Electromagnetic Compatibility:** FCC Part 15 Class A, IEC 61326-1 (emissions Class B, immunity Industrial requirements)
- **Food Safety:** NSF/ANSI 169, NSF/ANSI /3-A 14159-1

Accessories

Ethernet Kit	30037447
Second RS232 Kit	30037448
USB Kit	30037449
Weigh Below Hook	30037450
In Use Cover for V71 (one pc)	30037445
In Use Cover for V71 (10 pcs)	30037469
SF40A Impact Printer with Cable	30064203

OHAUS CORPORATION

* 7 Campus Drive
Suite 310
Parsippany, NJ 07054 USA

Tel: 800.672.7722
973.377.9000
Fax: 973.944.7177

www.ohaus.com

With offices throughout
Europe, Asia, and
Latin America

***ISO 9001:2008**
Registered Quality
Management System





Valor® 4000

Compact Bench Scales



V41PW



V41XW

Legal for trade food scale that enhances safety, efficiency, and productivity even in harsh environments!

The OHAUS Valor 4000 water resistant food scale raises the bar and sets a new industry standard with the winning combination of touchless operations, speed, and durability. Available in both stainless steel and plastic housing designs, Valor 4000 offers large LED front and rear displays, food safety and legal for trade approvals and puncture resistant keypads, making it the premiere scale for use in dry or washdown environments.

Standard Features Include:

- **Approvals Ensure Operation in the Most Demanding Environments** — With Legal for Trade certifications and food-safe washdown design that's NSF Certified, USDA-AMS Accepted and supports HACCP Certified systems, Valor 4000 meets the needs of the most demanding commercial applications in dry or wet environments.
- **Knife Proof Keypad Prevents Damage from Sharp Objects** — Valor 4000 has a polycarbonate keypad that can endure contact with knives or sharp instruments used daily in demanding food preparation, processing and portioning applications.
- **The Flow-Thru Design Protects Valor® 4000 in Harsh Environments** — Safe to use in the weighing of liquids and in wet environments, Valor 4000's IPX8 flow-thru design ensures the scale remains protected from damage from liquids.
- **Fast Speed, Practical Touchless Sensors, and Multiple Weighing Modes Enhance Productivity** — Touchless sensors combined with a half second stabilization time increase the productivity of weighing operations without sacrificing accuracy. Additional checkweighing and percent weighing modes increase the functionality of this efficient scale.

Valor® 4000 *Compact Bench Scales*

Approvals Ensure Operation in the Most Demanding Environments

The Valor 4000 provides precise measurements in any environment in which approvals and certifications are important. It has Legal for Trade certifications that meet or exceed the Class III accuracy requirements in accordance with the National Institute of Standards and Technology (NIST) Handbook 44 and Measurement Canada Weights and Measures Regulations. The easy to clean and sanitary design of Valor 4000 is Tested and Certified by NSF, USDA-AMS Accepted and supports HACCP Certified systems.

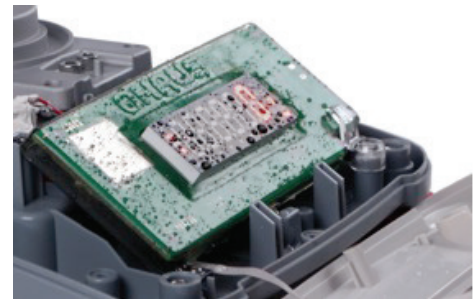


Knife Proof Keypad Prevents Damage from Sharp Objects

Valor 4000 has a highly durable 0.5 mm (0.02") thick polycarbonate keypad which is impact and puncture resistant. Valor 4000's smooth glossy surfaces easily repel stains, moisture, corrosive fluids and food contaminants, and stainless steel models offer an extra layer of protection.

The Flow-Thru Design Protects Valor 4000 in Harsh Environments

The flow-thru IPX8, water-resistant design allows for weighing of liquid components and can be used in harsh environments by channeling fluids that may enter the housing to strategically located drain holes, ensuring the scale remains clean and operational. The internal components and connections are silicone sealed to protect the scale from fluids that may enter the scale, and from condensation that may form inside the scale from constant temperature changes in a typical processing environment. The scale can be easily washed off at the end of each shift to keep it in sanitary condition and avoid the growth of bacteria from food contaminants.



Fast Speed, Practical Touchless Sensors, and Multiple Weighing Modes Enhance Productivity

Don't sacrifice speed or precision for the other – with Valor 4000, you will have both! Valor 4000 not only has a maximum external resolution of 1:6,000/1:7,500, but it displays results in less than half a second. Coupled with a touchless infrared sensor next to the back display which allows a second operator to tare the scale with simply a swipe of the hand, Valor 4000 was created to support speedy use. In addition to standard weighing, Valor 4000 offers checkweighing, accumulation and percent weighing modes.



Non-Slip Leveling Feet

Large fully rubberized feet are located at extreme corners of the scale to ensure a wide stance and surface resistance that minimizes the risk of the scale sliding or falling off smooth surfaces. The rubber of the feet extends to the shaft that ensures no grooves are exposed when fully extended; a design that passes NSF standards.



Power and Portability

The 100-240 VAC universal power adapter can be operated from virtually any power source and can automatically switch to adapt to different power and voltage lines. When plugging your machine in is not an option, the built-in rechargeable lead acid battery will provide power for 50 continuous hours, ensuring uninterrupted operation for more than a full week!

Adapter connection cover underneath the scale is spring loaded to ensure the power receptacle is protected from the ingress of moisture, especially when the scale is washed down.

Large Dual Displays

With bright front and rear LED displays, more than one operator can utilize the scale for the same job. Even in less than optimal conditions, large, brightly lit screens ensure you can see your results with ease even from a distance.

Dual displays also allow for quick and easy weighing in retail use. The large displays on the front and back of the Valor 4000 allow it to be used in countertop retail applications where the customer needs to see the weight on the platform.

Certifications

The Valor 4000 is Certified to NSF/ANSI 169 Special Purpose Food Equipment and Devices and is USDA-AMS Accepted to NSF/ANSI /3-A 14159-1 Hygiene Requirements for the Design of Meat and Poultry Processing Equipment.

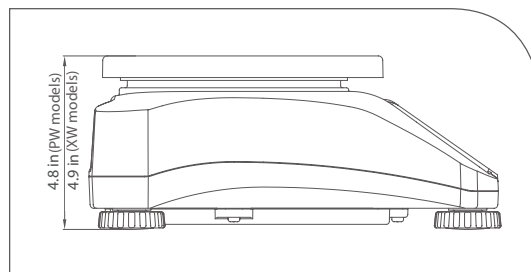
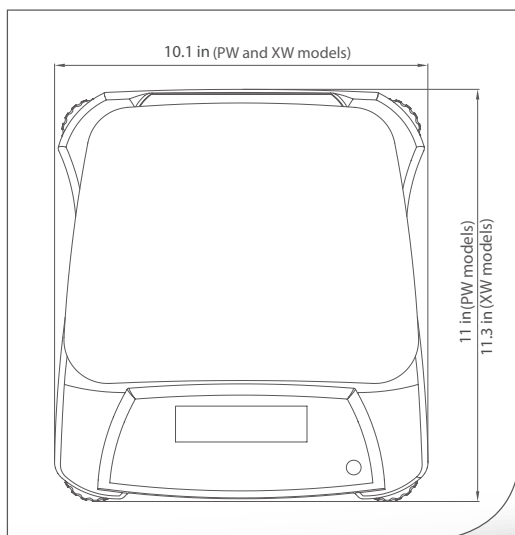
The Valor 4000 meet or exceed the Class III accuracy requirements in accordance with NIST Handbook 44 and Canada's Weights and Measures Regulations. Certificate of Conformance Number 13-056 was issued under the National Type Evaluation Program (NTEP) of the National Conference on Weights and Measures. Notice of Approval AM-5906C was issued by Measurement Canada, an Agency of Industry Canada.

Application Modes

- **Weighing** — Determine the weight of items in one or more weighing units -- lb, oz, lb:oz, kg or g -- use the 0.2g to 5g readability for weighing additives, spices and yeast.
- **Percent Weighing** — The Valor 4000 includes % weighing for recipe formulation and baker's percentages. Just weigh the flour on the Valor's platform, capture the reference weight and all other ingredients can be weighed as a % of the flour weight, making small batches of dough quick and easy to work up! Practical use in formulation, ingredients weighing and baker's percentage.
- **Check Weighing** — Use the bright red/yellow/green LED's to easily fill containers and packages by weight -- great for sorting, grading and portioning.
- **Accumulation** — Keep a running total of all items by weight for recording long production run results.



Rear Display with Integrated Touchless Sensor



Valor® 4000 Compact Bench Scales

Model	V41PWE1501T V41XWE1501T	V41PWE3T V41XWE3T	V41PWE6T V41XWE6T	V41PWE15T V41XWE15T
Capacity × Readability	1.5 kg x 0.0002 kg 1500 g x 0.2 g 3 lb x 0.0005 lb 48 oz x 0.01 oz 3 lb x 0.01 oz (lb:oz)	3 kg x 0.0005 kg 3000 g x 0.5 g 6 lb x 0.001 lb 96 oz x 0.02 oz 6 lb x 0.02 oz (lb:oz)	6 kg x 0.001 kg 6000 g x 1 g 15 lb x 0.002 lb 240 oz x 0.05 oz 15 lb x 0.05 oz (lb:oz)	15 kg x 0.002 kg 15000 g x 2 g 30 lb x 0.005 lb 480 oz x 0.1 oz 30 lb x 0.1 oz (lb:oz)
Certified Capacity × Readability	1.5 kg x 0.0005 kg 1500 g x 0.5 g 3 lb x 0.001 lb 48 oz x 0.02 oz	3 kg x 0.001 kg 3000 g x 1 g 6 lb x 0.002 lb 96 oz x 0.05 oz	6 kg x 0.002 kg 6000 g x 2 g 15 lb x 0.005 lb 240 oz x 0.1 oz	15 kg x 0.005 kg 15000 g x 5 g 30 lb x 0.01 lb 480 oz x 0.2 oz
Maximum Displayed Resolution (d)	1:7,500	1:6,000	1:6,000	1:7,500
Weighing Units	g, kg, lb, oz, lb:oz			
Application Modes	Weighing, Percent Weighing, Checkweighing, Accumulation			
Keyboard	Four mechanical switches with polycarbonate overlay			
Calibration	Digital external span calibration			
Display	7 segment, 6 digit, 20.5 mm / 0.8 in high red LED dual display			
Display Indicators	Stability, Center of Zero, Net, Battery Status, IR sensor and Accumulation			
Checkweighing Indicators	3 LED (yellow, green, red) with configurable operation			
IR Sensor	Rear side for Tare function			
Tare Range	To capacity by subtraction			
Zero Range	4% - 20% of Capacity			
Stabilization Time	≤0.5 second			
Safe Overload Capacity	150% of capacity			
Operating Temperature Range	-10 °C to 40 °C / 14° F to 104° F, 10% to 90% relative humidity non-condensing			
Construction	V41PW: Stainless steel platform, ABS housing V41XW: Stainless steel top housing and platform, ABS bottom housing			
Power	12V DC 0.84A, AC Universal adapter (100 - 220V AC / 50 -60Hz) and built-in internal rechargeable lead acid battery included			
Battery Operation	Typically 50 hours of continuous use with 12-hour full charge			
Ingress Protection	IPX8 Washdown			
Platform Size	190 x 242 mm / 7.5 x 9.5 in			
Scale Dimensions (W x D x H)	V41PW: 256 x 280 x 121 mm / 10.1 x 11 x 4.8 in V41XW: 256 x 288 x 124 mm / 10.1 x 11.3 x 4.9 in			
Shipping Dimensions (W x D x H)	410 x 370 x 220mm / 16.1 x 14.6 x 8.7 in			
Net Weight	V41PW: 3.0 kg / 6.6 lb V41XW: 3.9 kg / 8.6 lb			
Shipping Weight	V41PW: 4.0 kg / 8.8 lb V41XW: 4.9 kg / 10.8 lb			

Other Standard Features and Equipment

Adjustable feet, level bubble with lighting, menu and mode setup navigation prompts on keys, easy transportation carrying handle, stainless steel pan and chemical-resistant overlay, new mechanical keys, a cover with spring to protect power connector of scale

Approvals

- **Metrology:** NIST Handbook 44 (NTEP CC 13-056), Canada Weights and Measures Regulations (AM-5906C) – Class III, nmax 3000
- **Product Safety:** IEC 61010-1:2010; CAN/CSA-C22.2 No. 61010-1-12; UL Std. No. 61010-1 (3rd Edition)
- **Electromagnetic Compatibility:** FCC Part 15; Industry Canada ICES-003 – Class B
- **Ingress Protection:** IEC 60529 Edition 2.1 – IPX8
- **Food Safety:** NSF/ANSI 169-2009; NSF/ANSI /3-A 14159-1-2010
- **Other:** WEEE/RoHS

OHAUS CORPORATION

* 7 Campus Drive
Suite 310
Parsippany, NJ 07054 USA

Tel: 800.672.7722
973.377.9000
Fax: 973.944.7177

www.ohaus.com

With offices throughout
Europe, Asia, and
Latin America

***ISO 9001:2008**
Registered Quality
Management System



80774686 © Copyright Ohaus Corporation

CENTRAL CAROLINA SCALE, INC
SANFORD, NC

Call (919) 776-7737
<http://www.centralcarolinascalse.com>



Valor® 3000 Xtreme

Compact Precision Scales



(by model)



**SUPPORTS HACCP
COMPLIANCE**

Rugged, full stainless steel design in a high performance, easy-to-use, portable scale.

The Valor 3000 Xtreme Compact Precision Scale continues the OHAUS tradition of building high quality, durable products that are easy to use and hard to beat. The Valor 3000 Xtreme takes these OHAUS virtues to a new level by offering high precision 40,000d readability, durability, and ease-of-use, encased in a sleek and fully stainless steel compact housing. Washdown versions ensure that the Valor 3000 Xtreme meets the needs of even the most demanding environments.

Standard Features Include:

- **Extreme Design** — Full stainless steel housing with added chemical resistance and removable stainless steel weighing pan are durable and easy to clean (NEMA 4X/IP65 water resistant models available).
- **Extreme Protection** — Technically advanced overload protection rated at 10x capacity is ideal for tough environments where capacity is frequently exceeded
- **Extreme Performance** — The Valor 3000 Xtreme offers resolutions up to 40,000d and 0.01g, providing precise measurements in demanding environments. User adjustable filtering and stability settings allow the Valor 3000 Xtreme to operate accurately in drafty and unstable conditions
- **Extremely Friendly** — OHAUS' SmarText™ user interface utilizes a bright backlit LCD and simple text prompts to guide users through application use and scale setup, making the Valor 3000 Xtreme very easy to use

Valor® 3000 Xtreme *Compact Precision Scales*

Extreme Design

Extreme design means OHAUS took a clean sheet design and focused on offering the most durable and portable portioning product available. The Valor 3000 Xtreme is the highest precision scale in its class with complete stainless steel construction – both top and bottom housings are made of T304 stainless steel.

For use in wet applications, the Valor 3000 Xtreme offers an even higher level of protection by offering full NEMA 4X/IP65 water resistant models. All Valor 3000 Xtreme models are USDA-AMS accepted, NSF listed/certified, and will support a HACCP certified system. Valor 3000 Xtreme is battery powered for maximum portability and convenience. Valor 3000 Xtreme features QuadraStance™, with four wide adjustable feet to ensure that the scale stays ultra-secure and slip free during operation in wet or dry conditions, on any surface.



Extreme Overload and Shock Protection

All OHAUS products are designed to be the most rugged and durable products on the market, and the Valor 3000 Xtreme is no exception. Leveraging the advanced overload and shock resistance technology found in the Scout® Pro, OHAUS designed the Valor 3000 Xtreme's overload protection system to provide ten times capacity overload protection. This extreme overload protection makes each Valor 3000 Xtreme ideal for tough environments where scale capacity is exceeded regularly.

Extreme Performance

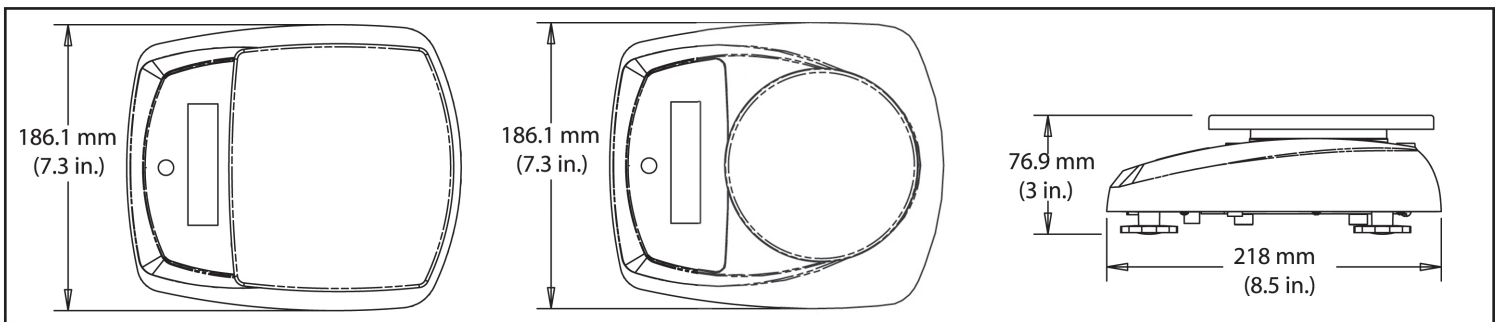
The Valor 3000 Xtreme has a rugged design, combined with high precision weighing cells offering resolutions up to 40,000d. Every scale has user adjustable stability, filtering and auto zero settings allowing Valor 3000 Xtreme to operate in drafty and unstable environments.

Extremely Friendly

Every Valor 3000 Xtreme is designed with OHAUS' SmarText™ interface that utilizes a bright backlit LCD and simple English text prompts to guide users through application use and scale setup.



Outline Dimensions



Application Modes

The Valor 3000 Xtreme series is loaded with software specifically designed for simple use and maximum throughput. Application modes include:

Percentage Weighing — This mode is great for compounding, mixing ingredients and formulation allowing users to compare the weight of a sample as the percentage of a reference weight. This function allows for quick portioning and checking of multiple samples against a target, and for quickly preparing multiple samples of the same size. The Valor 3000 Xtreme can automatically compute Baker's Percentages, eliminating guesswork and speeding use.

Specific Gravity Determination — This mode is perfect for rapidly and easily determining the specific gravity of a sample without the need for manual calculations. Not only can this be critical in materials testing, it is also useful for checking aeration of mixes for food processing and foodservice applications.



Other Standard Features

AC Power Standard

The included AC adapter provides continuous power, and the convenient stow-away plug keeps moisture out when not in use



Stainless Steel Housing and Weighing Pan

Easy to wipe clean and keep sanitary. The Valor 3000 Xtreme is NSF listed/certified, and USDA-AMS accepted, and supports HACCP compliance



Long Battery Life

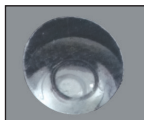
Valor 3000 Xtreme will run up to 120 hours (depending on model) with four C-type batteries



Bright Backlit Display

Weighing results are clearly shown on the bright backlit display with large easy-to-read digits

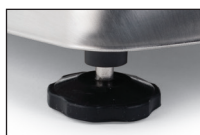
Up Front Level Bubble



A glance at the level bubble ensures easy leveling and superior stability

Adjustable Feet with Level Bubble

OHAUS QuadraStance™ offers four rugged and slip-resistant adjustable feet to help prevent slippage on wet or uneven surfaces



NEMA 4X/IP65 Housing

Valor 3000 Xtreme W models are perfect for use in wet and damp environments



SmarText™ Software

OHAUS' easy-to-use interface guides you through setup and applications such as Percentage Weighing and Specific Gravity modes with a simple push of the button



Valor® 3000 Xtreme Compact Scales

Models	V31XH202	V31XH402	V31X501	V31XH2	V31XH4	V31X3	V31X6	V31XW301	V31XW3 V31X3N*	V31XW6 V31X6N*
Capacity x Readability	0.4409 x 0.00005 lb 7.055 x 0.0005 oz 7 x 1/8 oz N/A N/A 0.2 x 0.00001 kg 200 x 0.01 g 6.763 x 0.0005 fl oz	0.88185 x 0.00005 lb 14.1095 x 0.0005 oz 14 1/8 x 1/8 oz N/A N/A 0.4 x 0.00001 kg 400 x 0.01 g 13.5255 x 0.0005 fl oz	1.1025 x 0.0005 lb 17.635 x 0.005 oz 17 5/8 x 1/8 oz 11lb:1.64 oz x 0.01 oz 11lb:1 5/8 oz x 1/8 oz 0.5 x 0.0001 kg 500 x 0.1 g 16.905 x 0.005 fl oz	4.409 x 0.0005 lb 70.55 x 0.005 oz 70 ½ x 1/8 oz 4 lb: 6.55 oz x 0.01 oz 4 lb : 6 ½ oz x 1/8 oz 2 x 0.0001 kg 2000 x 0.1 g 67.63 x 0.005 fl oz	8.8185 x 0.0005 lb 141.095 x 0.005 oz 141 1/8 x 1/8 oz 8lb:13.1 oz x 0.01 oz 8lb:13 1/8 x 1/8 oz 4 x 0.0001 kg 4000x 0.1 g 135.255 x 0.005 fl oz	6.615 x 0.005 lb 105.8 x 0.05 oz 105 ½ x 1/8 oz 6 lb : 9.8 oz x 0.05 oz 6 lb : 9 ½ oz x 1/8 oz 3 x 0.0001 kg 3000 x 1 g 101.44 x 0.05 fl oz	13.225 x 0.005 lb 211.65 x 0.05 oz 211 ½ x 1/8 oz 13 lb: 3.6 oz x 0.05 oz 13 lb : 3 ½ oz x 1/8 oz 6 x 0.001 kg 6000 x 1 g 202.9 x 0.05 fl oz	0.6615 x 0.0005 lb 10.585 x 0.005 oz 10 ½ x 1/8 oz N/A N/A 0.3 x 0.0001 kg 300 x 0.1 g 10.14 x 0.005 fl oz	6.615 x 0.002 lb 105.80 x 0.02 oz 105 ½ x 1/8 oz 6 lb : 9.80 oz x 0.02 oz 6 lb : 9 ½ oz x 1/8 oz 3 x 0.0005 kg 3000x 0.5 g 101.44 x 0.02 fl oz	13.225 x 0.005 lb 211.6 x 0.05 oz 211 ½ x 1/8 oz 13 lb: 3.6 oz x 0.05 oz 13 lb : 3 ½ oz x 1/8 oz 6 x 0.001 kg 6000 x 1 g 202.9 x 0.05 fl oz
Capacity x Readability (*NTEP certified)	N/A	N/A	N/A	N/A	N/A	N/A	N/A	N/A	6.6 x 0.005 lb 105.8 x 0.05 oz 3 x 0.001 kg 3000 x 1 g	13.225 x 0.005 lb 211.6 x 0.1 oz 6 x 0.002 kg 6000 x 2 g
Weighing Units	lb, decimal or fractional oz, lb:oz, fluid oz (of water), kg, g									
Modes	Simple weighing, percent weighing, combined zero/tare, specific gravity (S)									
Keyboard	Three mechanical switches (1 left; 2 right)									
Calibration	Digital external span calibration									
Display	7 segment, 6 digit, 0.78in / 20mm high LCD with white LED backlight									
Display Indicators	Center of zero, stability, over/under load, weighing unit and battery status									
Tare Range	Full capacity by subtraction									
Stabilization Time	3 seconds or less									
Auto-Zero Tracking	Off, 0.5, 1 or 3 divisions									
Operating Temp. / humidity	32°F to 104°F (0°C to 40°C) at 10% to 95% relative humidity Non-condensing, up to 2.5 miles / 4000m above sea level									
Power	9 – 12 VDC 0.5A AC wall adapter 100-120V AC, 50.60 Hz (included) or four 1.5 volt “C” batteries (not included)									
Battery Life	50 hours		120 hours		50 hours		120 hours		50 hours	
Dimensions L x W x H	8.5 x 7.3 x 3 in / 218 x 186 x 77 mm									
Pan size L x W	4.7 in /120 mm dia.			5.8 x 6.2 in / 146 x 158 mm			5.8 x 6.2 in / 146 x 158 mm			
Carton Dimensions L x W x H	12.79 x 9.92 x 5.51 in / 325 x 252 x 140 mm									
Net Weight	2.6 lb / 1.2 kg			2.9 lb / 1.3 kg					3.1 lb / 1.4 kg	
Shipping Weight	4.3 lb / 2 kg			4.6 lb / 2.1 kg					4.8 lb / 2.2 kg	
Ingress Protection (battery power only)	---	---	---	---	---	---	---	NEMA 4X/IP65**		

**** Note: Models V31X3N and V31X6N are not rated NEMA 4X/IP65.**

Standard Features

Removable stainless steel pan, digital external calibration software, selectable environmental settings, fast stabilization with selectable Auto-tare, integrated level bubble and adjustable feet, bright backlit display, selectable Auto-Off, selectable weighing unit, selectable power-up unit, AC power adapter included.

Accessories

Oversize sandwich platter†, french fry platter†, ice cream platter†, carrying case. Contact your local OHAUS representative for availability.

†Note: Platters not applicable to models below 2000g capacity (V31XH202, V31XH402, V31X501)

Approvals

- Food Service: NSF Listed/Certified to NSF/ANSI 169-2005 Special Purpose Food Equipment and Devices (formerly NSF C-2); USDA/AMS Accepted to NSF/3-A 14159-1 Hygiene Requirements for the Design of Meat and Poultry Processing Equipment; meets requirements for HACCP conformity.

- Electrical/Emissions: CE listed, meets AS/NZS4251.1 Emission/AS/NZS4252.1 Immunity, FCC Class B Part 15 operation, Industry Canada Class A. cULus AC power pack.

Compliant to Directive 2002/96/EC on waste electrical and electronic equipment (WEEE)

- Legal-for-Trade: *NTEP CoC No. 08-008

- Quality: OHAUS quality management system registered to ISO 9001:2008

OHAUS CORPORATION

* 7 Campus Drive
Suite 310
Parsippany, NJ 07054 USA

Tel: 800.672.7722
973.377.9000
Fax: 973.944.7177

www.ohaus.com

With offices throughout
Europe, Asia, and
Latin America

*ISO 9001:2008

Registered Quality
Management System





Valor[®] 2000

Compact Bench Scales



V22PW



V22XW

A durable, rapid-response food processing scale that enhances safety, efficiency, and productivity even in harsh environments!

The OHAUS Valor 2000 water resistant food scale sets a new industry standard with the winning combination of speed and durability. Available in both stainless steel and plastic housing designs, Valor 2000 offers large LED front and rear displays, food safety approvals and puncture resistant keypads, making it the premiere value scale for use in dry or washdown environments.

Standard Features Include:

- **Knife Proof Keypad Prevents Damage from Sharp Objects**—Valor 2000 has a polycarbonate keypad that can endure contact with knives or sharp instruments used daily in demanding food preparation, processing and portioning applications.
- **Flow-Thru Design Protects Valor 2000 in Harsh Environments**—Safe to use in the weighing of liquids and in wet environments, Valor 2000 is NSF Certified and has an IPX8 flow-thru design which channels fluids that may enter the housing through strategically located drain holes, ensuring the scale remains clean and operational.
- **Fast Speed and Large Dual Displays Allows More than One Operator to Easily Work on Valor 2000**—With less than a one second stabilization time and front and rear LED displays, multiple operators can efficiently utilize one scale for the same job.
- **Stainless Steel Version Offered with Extra Check Weighing Mode**—The Valor 2000 stainless steel models feature an easy to clean, rigid and protective 304 stainless steel top housing with check weighing mode, expanding its functionality.

Valor® 2000 Compact Bench Scales

Knife Proof Keypad Prevents Damage from Sharp Objects

The Valor 2000 is constructed with highly durable 0.5 mm (0.02") thick polycarbonate keypad which is impact and puncture resistant. Valor 2000's smooth glossy surfaces easily repel stains, moisture, corrosive fluids and food contaminants, and stainless steel models offer an extra layer of protection.

Flow Thru™ Design Protects Valor 2000 in Harsh Environments

The flow-thru IPX8, water-resistant design allows for weighing of liquid components and can be used in harsh environments by channeling fluids that may enter the housing to strategically located drain holes, ensuring the scale remains clean and operational. The internal components and connections are silicone sealed to protect the scale from fluids and from condensation that may form inside the scale from constant temperature changes in a typical processing environment. The scale can be easily washed off at the end of each shift to keep it in sanitary condition and avoid the growth of bacteria from food contaminants.

Fast Speed and Large Dual Displays Allow More than One Operator Easily to Work on Valor 2000

Not only does Valor 2000 display results in less than half a second, but with its front and back displays, more than one operator can use the scale for the same job, truly bolstering productivity.

Stainless Steel Version Offered with Extra Check Weighing Mode

The 304 stainless steel Valor 2000's provide an extra layer of protection, as well as an additional checkweighing mode. This ruggedly durable and easy to clean model enhances the scale's usability for all checkweighing applications, including sorting, portioning, and quality assurance.



Rear Display



Power and Portability

The 100-240 VAC universal power adapter can be operated from virtually any power source and can automatically switch to adapt to different power and voltage lines. When plugging in your machine is not an option, the built-in, rechargeable lead acid battery will provide power for 50 continuous hours, ensuring uninterrupted operation for more than a full work week!

Adapter connection cover underneath the scale is spring loaded to ensure the power receptacle is protected from the ingress of moisture, especially when the scale is washed down.

Non-Slip Leveling Feet

Large fully rubberized feet are located at extreme corners of the scale to ensure a wide stance and surface resistance that minimizes the risk of the scale sliding or falling off smooth surfaces. The rubber of the feet extends to the shaft that ensures no grooves are exposed when fully extended; a design that passes NSF standards.

Simple Operation with largest LED display

Valor 2000 was designed with the basic weighing needs of the food industry in mind. The LED display window is 20.5mm (0.8 inch) high, which is bigger than most competitive products. It is exceptionally easy to setup and operate, resulting in increased productivity.

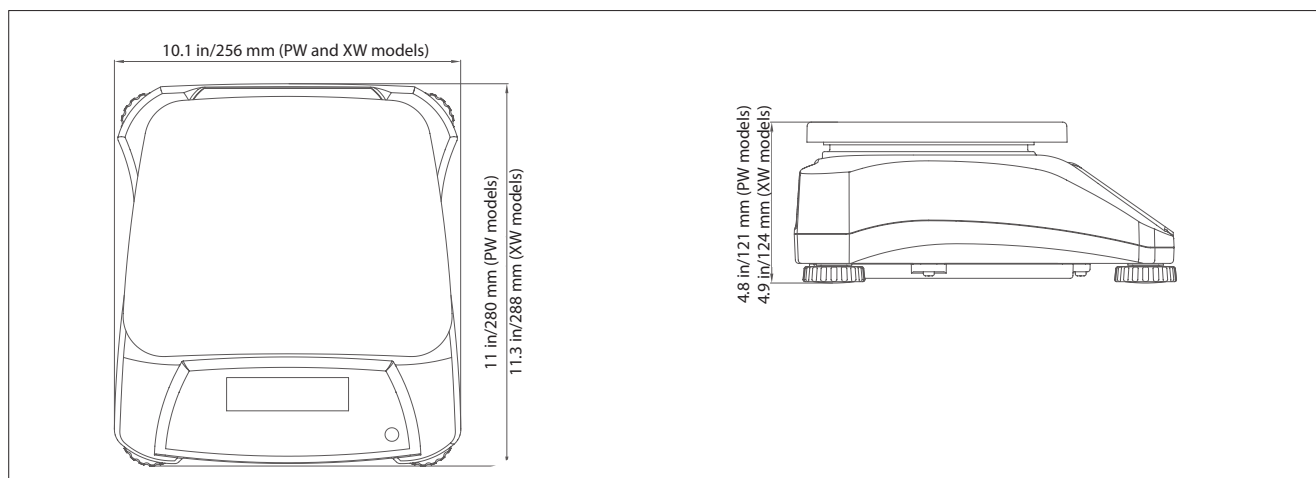
Application Modes

- **Weighing** — Determine the weight of items in the selected unit of measure.
- **Check Weighing (V22XW only)** — Use the bright red/yellow/green LED's to easily fill containers and packages by weight -- great for sorting, grading and portioning.

Certifications

The Valor 2000 is Certified to NSF/ANSI 169 Special Purpose Food Equipment and Devices and is USDA-AMS Accepted to NSF/ANSI /3-A 14159-1 Hygiene Requirements for the Design of Meat and Poultry Processing Equipment.

Dimensions



Valor[®]2000 Compact Bench Scales

Model	V22PWE1501T V22XWE1501T	V22PWE3T V22XWE3T	V22PWE6T V22XWE6T	V22PWE15T V22XWE15T	V22PWE30T V22XWE30T
Capacity (max) x Readability (d)	1.5 kg × 0.0002 kg 1500 g × 0.2 g 3 lb × 0.0005 lb 48 oz × 0.01 oz 3 lb × 0.01 oz (lb:oz)	3 kg × 0.0005 kg 3000 g × 0.5 g 6 lb × 0.001 lb 96 oz × 0.02 oz 6 lb × 0.02 oz (lb:oz)	6 kg × 0.001 kg 6000 g × 1 g 15 lb × 0.002 lb 240 oz × 0.05 oz 15 lb × 0.05 oz (lb:oz)	15 kg × 0.002 kg 15000 g × 2 g 30 lb × 0.005 lb 480 oz × 0.1 oz 30 lb × 0.1 oz (lb:oz)	30 kg × 0.005 kg 30000 g × 5 g 60 lb × 0.01 lb 960 oz × 0.2 oz 60 lb × 0.2 oz (lb:oz)
Maximum Resolution (d)	1:7,500	1:6,000	1:6,000	1:7,500	1:6,000
Weighing Units	g, kg, lb, oz, lb:oz				
Application Modes	V22PW: Weighing V22XW: Weighing, Checkweighing				
Keyboard	V22PW: Two mechanical switches with polycarbonate overlay V22XW: Four mechanical switches with polycarbonate overlay				
Calibration	Digital external span calibration				
Display	7 segment, 6 digit, 20.5 mm / 0.8 in high red LED dual display				
Display Indicators	Stability, center of zero, net, battery status				
Tare Range	To capacity by subtraction				
Zero Range	-10% to 10% of Capacity				
Stabilization Time	≤0.5 second				
Safe Overload Capacity	150% of capacity				
Operation Temperature Range	-10 °C to 40 °C / 14° F to 104° F, 10% to 90% relative humidity non-condensing				
Construction	V22PW: stainless steel platform, ABS housing V22XW: Stainless steel top housing and platform, ABS bottom housing				
Power	12V DC 0.84A, AC Universal adapter (100 - 220V AC / 50 -60Hz) and built-in internal rechargeable lead acid battery included				
Battery Operation	Typically 50 hours of continuous use with 12-hour full charge				
Ingress Protection	IPX8 Washdown				
Pan Size	190 × 242 mm / 7.5 × 9.5 in				
Scale Dimensions (W × D × H)	V22PW: 256 × 280 × 121 mm / 10.1 × 11 × 4.8 in V22XW: 256 × 288 × 124 mm / 10.1 × 11.3 × 4.9 in				
Shipping Dimensions (W × D × H)	410 × 370 × 220mm / 16.1 × 14.6 × 8.7 in				
Net Weight	V22PW: 3.0 kg / 6.6 lb V22XW: 3.9 kg / 8.6 lb				
Shipping Weight	V22PW: 4.0 kg / 8.8 lb V22XW: 4.9 kg / 10.8 lb				

Other Standard Features and Equipment

Level bubble, easy-to-transport carrying handle, removable stainless steel platform and chemical-resistant overlay, mechanical keys, spring loaded cover to protect power connector of scale

Compliance

- **Product Safety:** IEC 61010-1; CAN/CSA C22.2 No. 61010-1; UL Std. No. 61010-1
- **Electromagnetic Compatibility:** FCC Part 15; Industry Canada ICES-003 – Class B ; IEC 61326-1 - Class B, Basic environments
- **Ingress Protection:** IEC 60529 – IPX8
- **Food Safety:** NSF/ANSI 169; NSF/ANSI /3-A 14159-1
- **Other:** RoHS

Accessory

Stainless Steel Platform, 300 x 225 mm30251753

OHAUS CORPORATION

* 7 Campus Drive
Suite 310
Parsippany, NJ 07054 USA

Tel: 800.672.7722
973.377.9000
Fax: 973.944.7177

www.ohaus.com

With offices throughout
Europe, Asia, and
Latin America

*ISO 9001:2008
Registered Quality
Management System





Valor™ 1000

Compact Precision Scales



Rear display shown
(dual-display models only)



SUPPORTS HACCP
COMPLIANCE

Economical, multipurpose weighing in a compact scale

OHAUS Valor™ 1000 precision scales are an economical choice for your basic weighing needs. Standard software includes checkweighing mode, accumulation mode and multiple units of measure. Valor 1000 scales feature a removable stainless steel weighing platform, and a mid profile ABS plastic housing with leveling adjustment. Each scale also comes standard with a long lasting internal rechargeable battery for ultimate portability and convenience.

Standard Features Include:

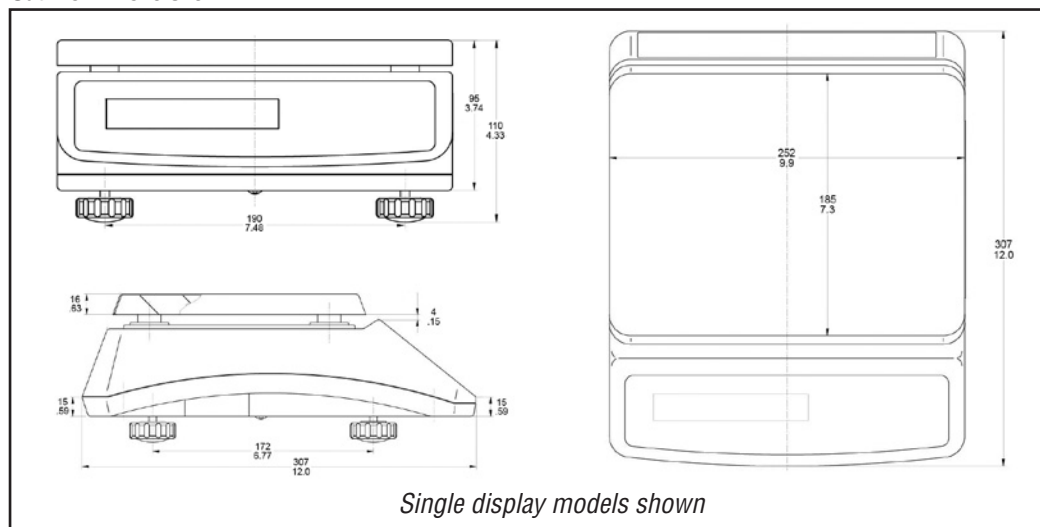
- **Ergonomic design** – Compact footprint, large removable stainless pan with a bright, easy to read backlit LCD (models with front or dual front and back of scale displays available) and audible alerts
- **Solid performance** – Fast response time, leveling capability standard, and precision resolutions up to 7,500d
- **Friendly operation** – Easy to clean and transport. Included long-life internal rechargeable battery with standard AC power adapter and user selectable auto shut off backlight
- **Single or dual displays**

Valor™ 1000 Compact Precision Scales

Specifications

Single Display Model	V11P3	V11P6	V11P15	V11P30
Dual Display Model	V11P3T	V11P6T	V11P15T	V11P30T
Capacity x Readability	6.6 lb x 0.001 lb 105 oz x 0.02 oz 3 kg x 0.0005 kg 3000 g x 0.5 g	13 lb x 0.002 lb 210 oz x 0.05 oz 6 kg x 0.001 kg 6000 g x 1 g	33 lb x 0.005 lb 520 oz x 0.1 oz 15k g x 0.002 kg 15000 g x 2 g	66 lb x 0.01 lb 1058 oz x 0.2 oz 30 kg x 0.005 kg 30000 g x 5 g
Weigh Units	kilograms, pounds, grams, ounces			
Modes	Weigh, accumulate, checkweigh			
Keyboard	Four mechanical switches (right)			
Calibration	Digital external span calibration			
Display Type	0.8 in. / 20 mm H, 6-digit 7-segment LCD with blue LED backlight T models have dual displays (front and back of scale), non T models have single display on front of scale			
Display Indicators	Center of zero, stability, net, sum, over/accept/under check, weighing unit and battery charge status			
Tare Range	To capacity by subtraction			
Stabilization Time	<=3 seconds			
Auto Zero Tracking	User selectable from 0.1d to 2d			
Operating Temp / Humidity	32°F to 104°F (0°C to 40°C) at 10% to 95% relative humidity Non-condensing, up to 2.5 miles / 4000m above sea level			
Power	120 VAC / 9 VDC 500 mA AC adapter (included) Internal rechargeable sealed lead acid battery (included)			
Typical battery Life	80/100 hours (with / without backlight on) with 12-hour recharge time			
Construction	ABS plastic housing, stainless steel pan			
Safe Overload	120% of capacity			
Scale Dimensions	10w x 12d x 4.3h in / 250w x 307d x 110h mm			
Pan Size	9.9w x 7.1d in / 250w x 180d mm			
Carton Dimensions	12.75w x 6.25d x 11.9h in / 340w x 160d x 300h mm			
Net Weight	7 lb / 3.2 kg			
Shipping Weight	8.8 lb / 4.0 kg			

Outline Dimensions



Standard Features

Internal rechargeable battery with dynamic charge status, removable stainless steel pan, digital external calibration software, selectable environmental settings, fast stabilization, integrated level bubble and adjustable feet, single or dual bright backlit display with selectable Auto-Off, selectable weighing unit, included AC power adapter.

Compliance

- **Food Service:** NSF Listed/Certified to NSF/ANSI 169-2005 Special Purpose Food Equipment and Devices (formerly NSF C-2).

Approvals

- **Electrical/Emissions:** CE listed, meets AS/NZS4251.1 Emission/AS/NZS4252.1 Immunity, FCC Class A Part 15 operation, Industry Canada Class A. _CUL_{us} AC power pack.
Compliant to Directive 2002/96/EC on waste electrical and electronic equipment (WEEE).
- **Quality:** Ohaus quality management system registered to ISO 9001:2008

OHAUS CORPORATION

* 7 Campus Drive
Suite 310
Parsippany, NJ 07054 USA

Tel: 800.672.7722
973.377.9000
Fax: 973.944.7177

www.ohaus.com

*With offices throughout Europe,
Asia, and Latin America*

* ISO 9001

Registered Quality Management System

